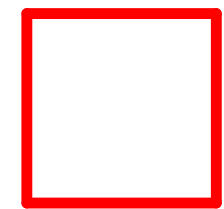


ARMSTRONGS SITES



74 CAMBRIDGE TERRACE
DEMOLITION



NEIGHBOURING CAR SITES



74 CAMBRIDGE TERRACE – AERIAL – CAR SITES

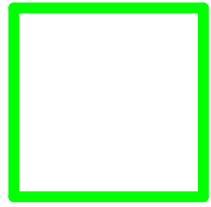
DEMOLITION – EXTENSION ARMSTRONG'S MOTOR GROUP

DESIGN	DJM	DRAWN	GM	ISSUE DATE	13/05/25
SCALE AT A1 (half scale if printed at A3)					
				1 : 1500	
PROJECT No.				23023	
SHEET No.				REVISION	
SK10.00				A	

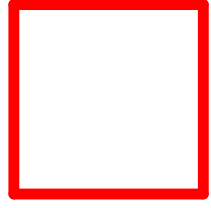
RESOURCE CONSENT

archaus

www.archaus.co.nz



ARMSTRONGS SITES



74 CAMBRIDGE TERRACE
DEMOLITION



74 CAMBRIDGE TERRACE – AERIAL LOCATION PLAN

DEMOLITION – EXTENSION ARMSTRONG'S MOTOR GROUP

DESIGN	DJM	DRAWN	GM	ISSUE DATE	13/05/25
SCALE AT A1 (half scale if printed at A3)					
				1 : 500	
PROJECT No.	23023				
SHEET No.	SK10.01		REVISION	A	

RESOURCE CONSENT

archaus
www.archaus.co.nz

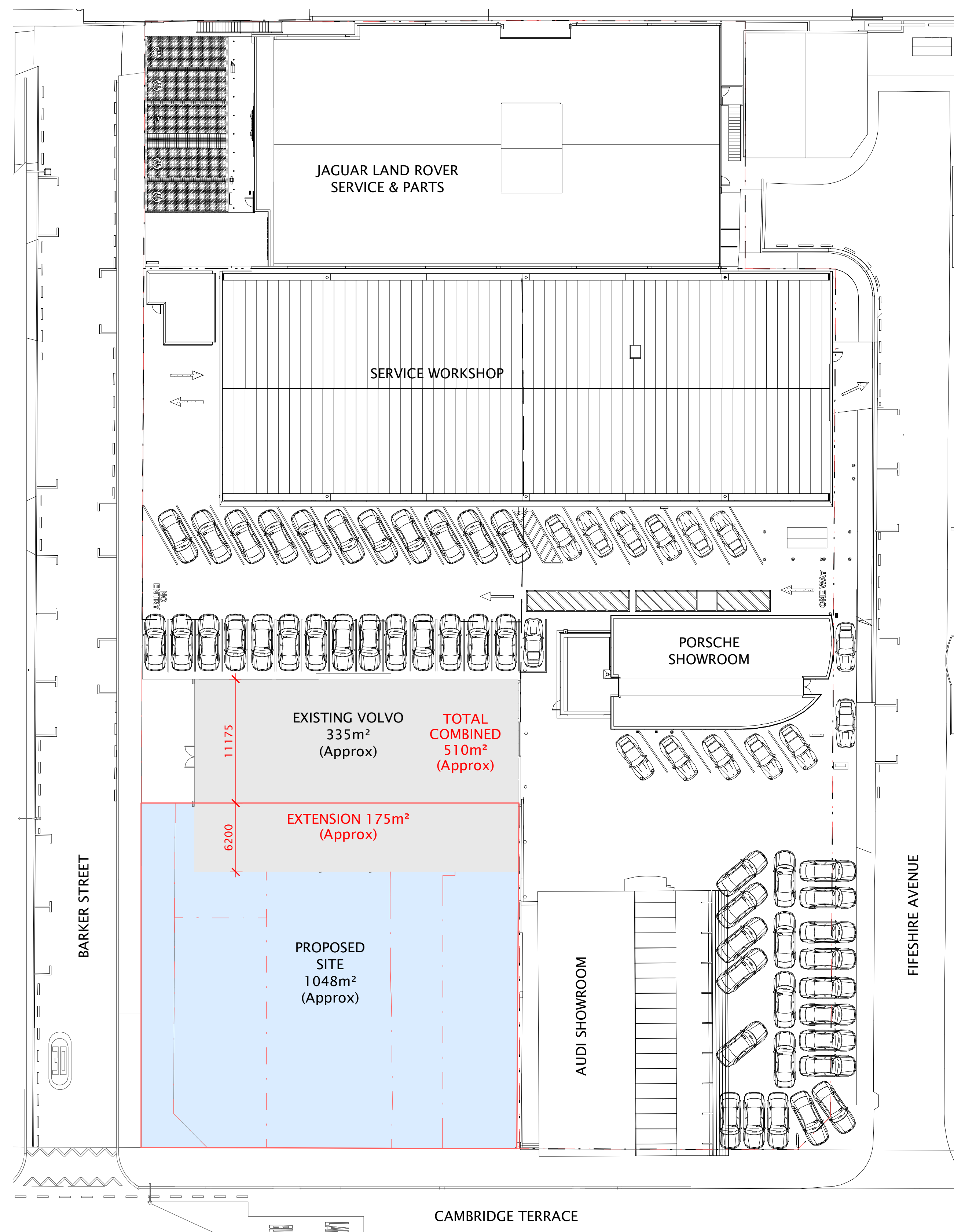


74 CAMBRIDGE TERRACE – AERIAL SITE PLAN
DEMOLITION – EXTENSION ARMSTRONG'S MOTOR GROUP

DESIGN	DJM	DRAWN	GM	ISSUE DATE	13/05/25
SCALE AT A1 (half scale if printed at A3)					
PROJECT No.				23023	
SHEET No.				REVISION	
SK10.02				A	

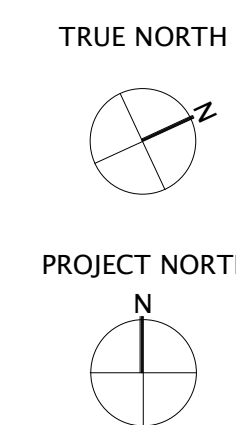
RESOURCE CONSENT

archaus
www.archaus.co.nz



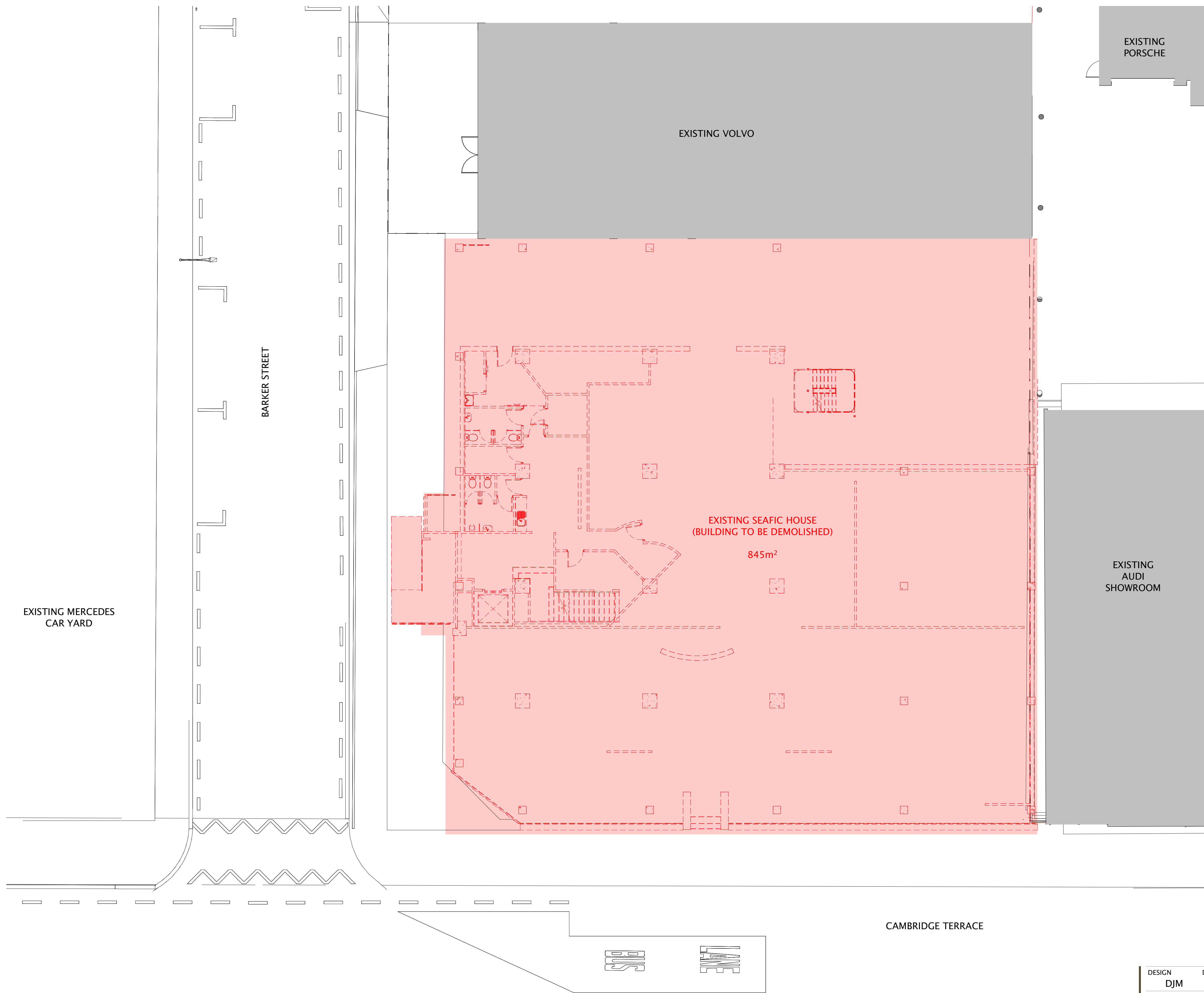
74 CAMBRIDGE TERRACE – SITE PLAN (OPT 2)

DEMOLITION – EXTENSION ARMSTRONG'S MOTOR GROUP



DESIGN DJM	DRAWN GM	ISSUE DATE 13/05/25
SCALE AT A1 (half scale if printed at A3)		
PROJECT No.		23023
SHEET No.		REVISION
SK10.03		A

COPYRIGHT OF THIS DOCUMENT BELONGS TO ARCHAUS LIMITED
CONTRACTOR SHALL REPORT ANY OMISSIONS OR DISCREPANCIES TO THE ARCHITECT FOR CLARIFICATION PRIOR TO THE AFFECTED WORK COMMENCING
ALL WORK TO COMPLY WITH NZBC COMPLIANCE DOCUMENTS, NZ STANDARDS AND LOCAL TERRITORIAL AUTHORITY REGULATIONS
DRAWINGS TO BE READ IN CONJUNCTION WITH ALL OTHER RELEVANT DOCUMENTATION
DO NOT SCALE OFF DRAWINGS



74 CAMBRIDGE TCE – DEMOLITION PLAN

DEMOLITION – EXTENSION ARMSTRONG'S MOTOR GROUP

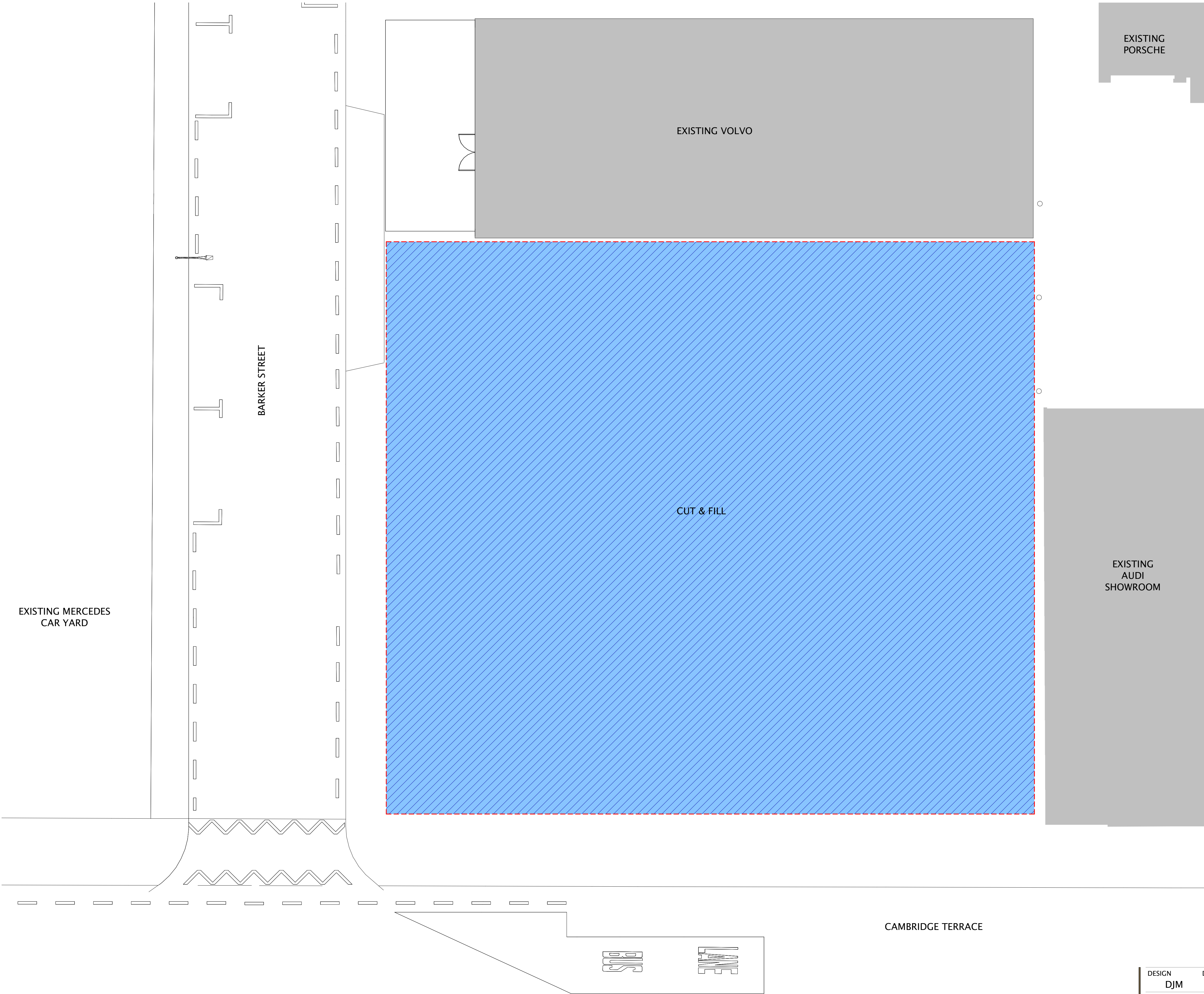
CAMBRIDGE TERRACE


DESIGN	DJM	DRAWN	GM	ISSUE DATE	13/05/25
SCALE AT A1 (half scale if printed at A3)					
PROJECT No.				23023	
SHEET No.				REVISION	
SK20.00				A	

RESOURCE CONSENT

archaus
www.archaus.co.nz

COPYRIGHT OF THIS DOCUMENT BELONGS TO ARCHAUS LIMITED
CONTRACTOR SHALL REPORT ANY OMISSIONS OR DISCREPANCIES TO THE ARCHITECT FOR CLARIFICATION PRIOR TO THE AFFECTED WORK COMMENCING
ALL WORK TO COMPLY WITH NZBC COMPLIANCE DOCUMENTS, NZ STANDARDS AND LOCAL TERRITORIAL AUTHORITY REGULATIONS
DRAWINGS TO BE READ IN CONJUNCTION WITH ALL OTHER RELEVANT DOCUMENTATION
DO NOT SCALE OFF DRAWINGS



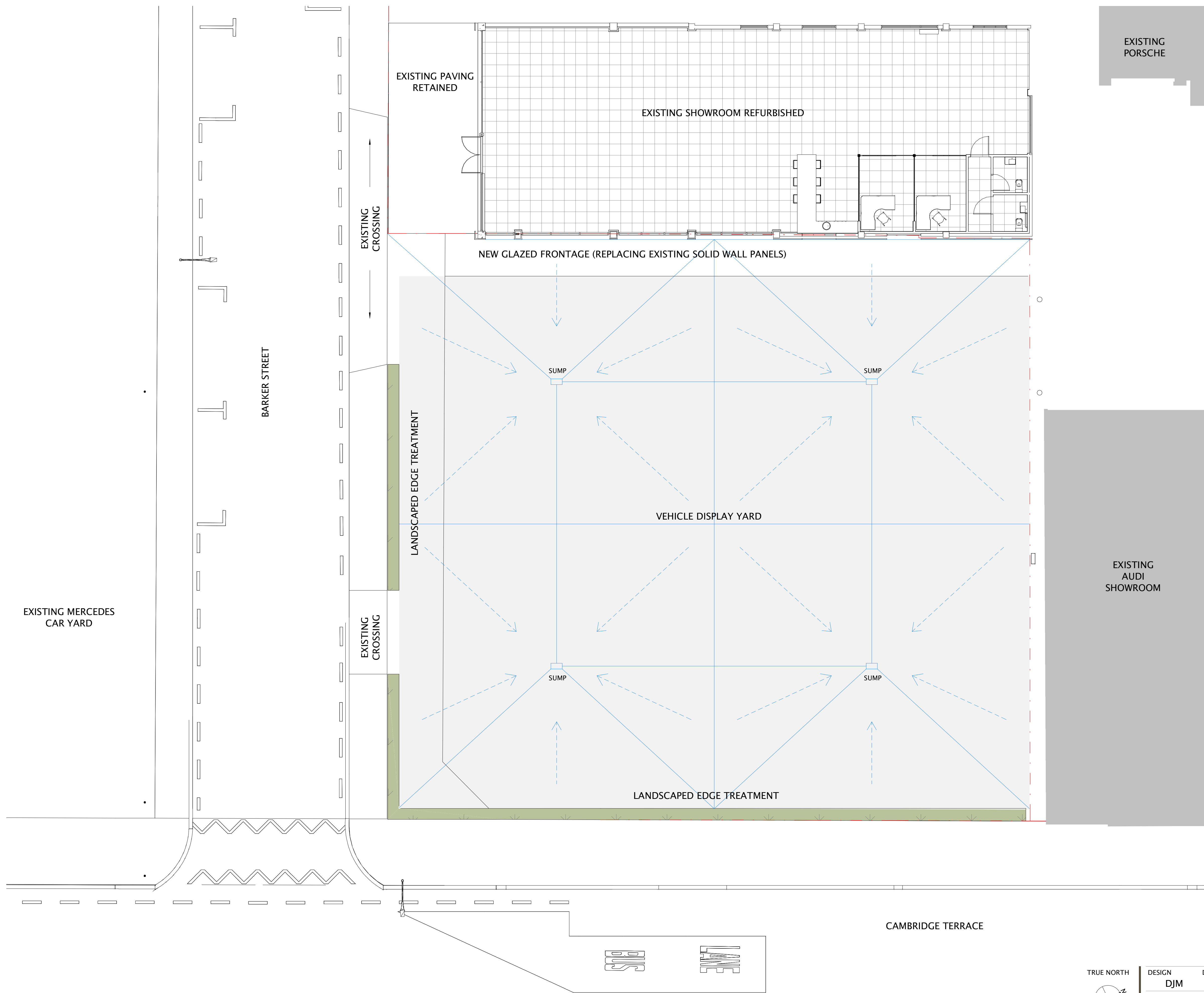
INDICATIVE CUT & FILL – VOLUMES	
VOLUME VALUES BELOW ARE ESTIMATES / NOMINAL & SUBJECT TO GEOTECHNICAL, CIVIL & STRUCTURAL ENGINEERING.	
	CUT 612 m ³ REMOVAL (DISPOSAL)
	FILL 550 m ³

74 CAMBRIDGE TCE – CUT AND FILL ESTIMATE
DEMOLITION – EXTENSION ARMSTRONG'S MOTOR GROUP

DESIGN	DJM	DRAWN	GM	ISSUE DATE	13/05/25
SCALE AT A1 (half scale if printed at A3)					
PROJECT No.				23023	
SHEET No.				REVISION	
SK20.01				A	

RESOURCE CONSENT

archaus
www.archaus.co.nz



INDICATIVE STORMWATER

STORMWATER LAYOUT TO VEHICLE DISPLAY YARD IS PRELIMINARY & SUBJECT TO CIVIL & BUILDING SERVICES ENGINEERING.

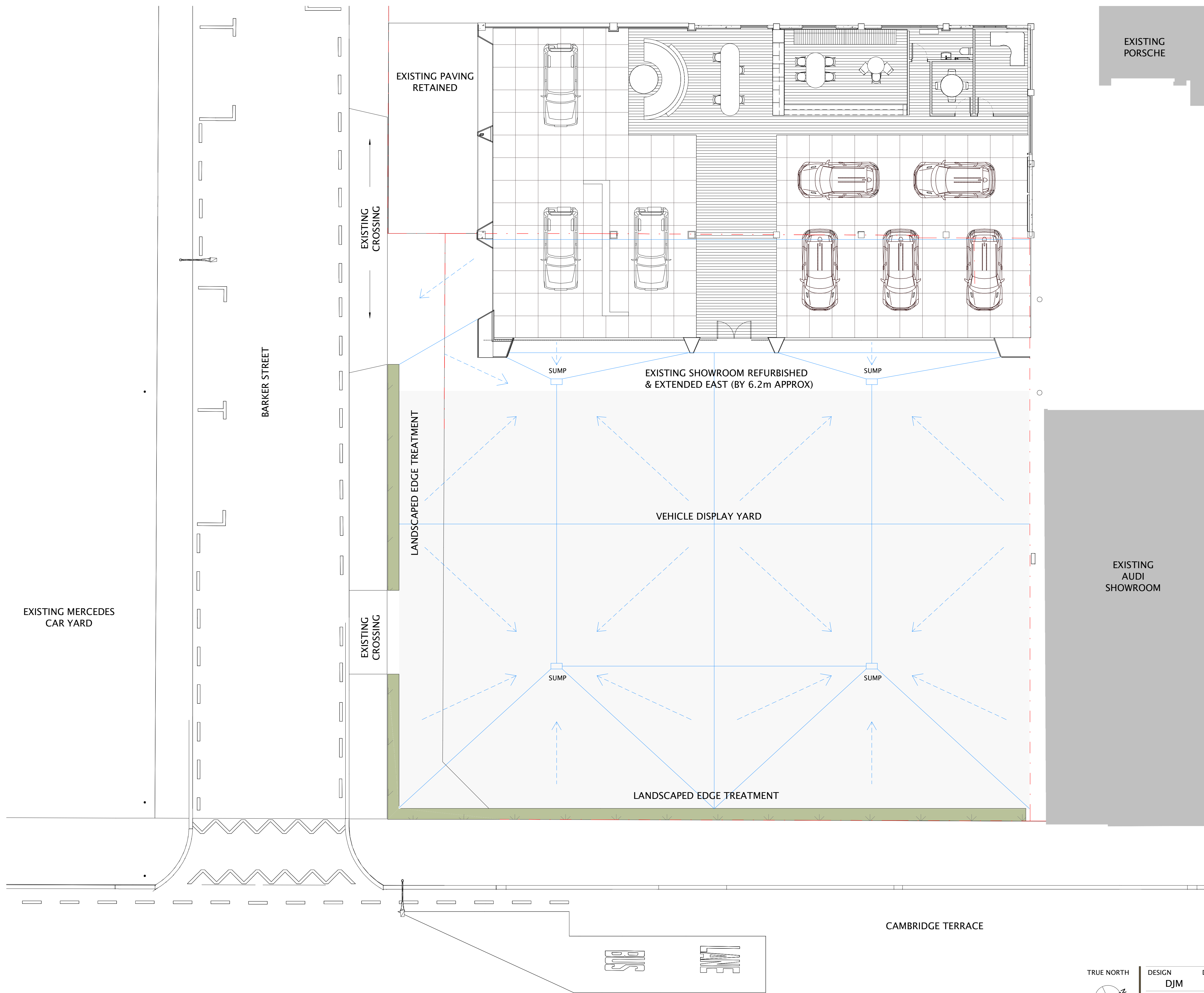
4 NO. NEW SUMPS TO BE CONNECTED BELOW GROUND VIA NEW HYDRAULICS STORMWATER PIPEWORK. ROUTED SOUTH THROUGH 2 NO. EXISTING DRIVEWAYS (BELOW GROUND), CONNECTING TO EXISTING STORMWATER SYSTEM IN BARKER STREET.

—

STORMWATER – RIDGE LINES
RIDGE LINES TO SEALED CAR YARD ASPHALT SURFACE, DIRECTING STORMWATER RUNOFF TO NEW SUMPS WITHIN SITE.

- - - - ->

STORMWATER – FLOW DIRECTION
DASHED LINES REPRESENT DIRECTIONAL FLOW OF STORMWATER TO SUMPS.



EXISTING
PORSCHE

INDICATIVE STORMWATER

STORMWATER LAYOUT TO VEHICLE DISPLAY YARD IS PRELIMINARY & SUBJECT TO CIVIL & BUILDING SERVICES ENGINEERING.

4 NO. NEW SUMPS TO BE CONNECTED BELOW GROUND VIA NEW HYDRAULICS STORMWATER PIPEWORK. ROUTED SOUTH THROUGH 2 NO. EXISTING DRIVEWAYS (BELOW GROUND), CONNECTING TO EXISTING STORMWATER SYSTEM IN BARKER STREET.

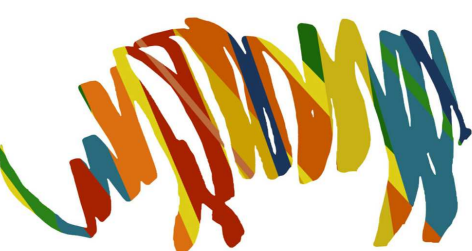
— STORMWATER – RIDGE LINES
RIDGE LINES TO SEALED CAR YARD ASPHALT SURFACE, DIRECTING STORMWATER RUNOFF TO NEW SUMPS WITHIN SITE.

- - - - - STORMWATER – FLOW DIRECTION
DASHED LINES REPRESENT DIRECTIONAL FLOW OF STORMWATER TO SUMPS.

EXISTING
AUDI
SHOWROOM

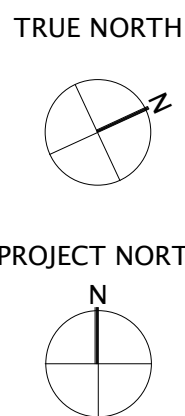
EXISTING MERCEDES
CAR YARD

CAMBRIDGE TERRACE



74 CAMBRIDGE TCE – FLOOR PLAN (OPT2)

DEMOLITION – EXTENSION ARMSTRONG'S MOTOR GROUP



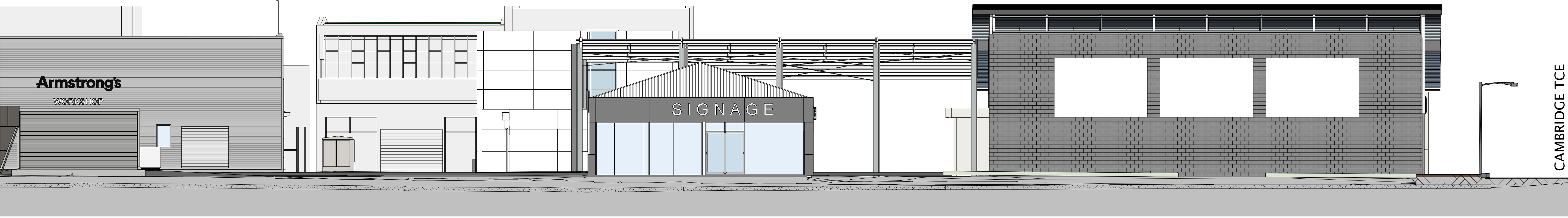
DESIGN	DJM	DRAWN	GM	ISSUE DATE	13/05/25
SCALE AT A1 (half scale if printed at A3)	1 : 100				
PROJECT No.	23023				REVISION
SHEET No.	SK20.03				A

RESOURCE CONSENT

archaus
www.archaus.co.nz



OPT 1 – PROPOSED EAST ELEVATION – (CAMBRIDGE TERRACE)



OPT 1 – PROPOSED SOUTH ELEVATION – (BARKER ST)



74 CAMBRIDGE TCE – (OPT 1) PROPOSED ELEVATIONS

DEMOLITION – EXTENSION ARMSTRONG'S MOTOR GROUP

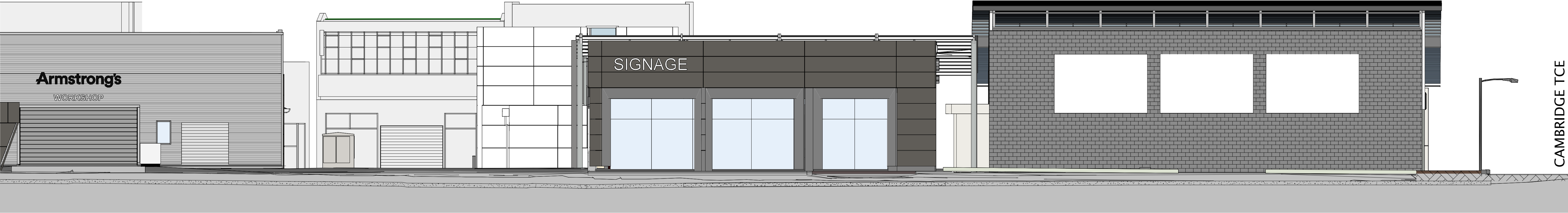
DESIGN	DJM	DRAWN	GM	ISSUE DATE	13/05/25
SCALE AT A1 (half scale if printed at A3)					
				1 : 100	
PROJECT No.				23023	
SHEET No.	SK30.00			REVISION	A

RESOURCE CONSENT

archaus
www.archaus.co.nz



OPT 2 – PROPOSED EAST ELEVATION – (CAMBRIDGE TERRACE)



OPT 2 – PROPOSED SOUTH ELEVATION – (BARKER ST)



74 CAMBRIDGE TCE – (OPT 2) PROPOSED ELEVATIONS

DEMOLITION – EXTENSION ARMSTRONG'S MOTOR GROUP

DESIGN	DJM	DRAWN	GM	ISSUE DATE	13/05/25
SCALE AT A1 (half scale if printed at A3)					
				1 : 100	
PROJECT No.				23023	
SHEET No.	SK30.01			REVISION	A

RESOURCE CONSENT

archaus
www.archaus.co.nz