



RECORD OF TITLE
UNDER LAND TRANSFER ACT 2017
FREEHOLD
Search Copy



R.W. Muir
Registrar-General
of Land

Identifier **536984**
Land Registration District **Wellington**
Date Issued 05 August 2011

Prior References

258480 WN45B/770

Estate Fee Simple
Legal Description Lot 3 Deposited Plan 436892
Registered Owners
Wellington Waterfront Limited

Interests

FOR AREA SEE DP 436892 - Reduced Levels are in terms of Mean Sea Level Wellington Datum 1953

Subject to a right to a water supply, sewage and water drainage over parts marked L, N and P on DP 436892 specified in Easement Certificate B318024.1 - 9.11.1993 at 10:37 am

B346971.1 Encumbrance to Wellington City Council - 8.3.1994 at 2.45 pm (affects part formerly Lot 2 DP 363596)

Subject to a right (in gross) to electricity over parts marked LZ, WX, BS, LX, PR, NX, SP, GZ, MZ, PA, P, Q, JZ, HZ, L, M, EA, EB, N, O and IZ on DP 436892 in favour of Vector Wellington Electricity Network Limited created by Transfer 6697280.9 - 19.12.2005 at 9:00 am

Subject to a right (in gross) to telecommunication and computer media over parts marked WX, P, Q, PA, X, SZ, TZ, HZ, OA, GZ, XX and EB on DP 436892 in favour of Telecom New Zealand Limited created by Easement Instrument 6697280.10 - 19.12.2005 at 9:00 am

Subject to a right (in gross) to gas over parts marked NZ, RZ, C and I on DP 436892 in favour of Powerco Limited created by Easement Instrument 6697280.11 - 19.12.2005 at 9:00 am

Subject to a right of way over parts marked A, B, C, D, E, F, FF, G, H, I, J, K, LA and LL, a pedestrian right of way over part marked TX, ventilation over parts marked ZY, KY, TY, GY, QX, RX, JX, LX, NX, WZ, XZ and YZ, sewage drainage over parts marked UX, MZ, WW, SS, PA, X, L, M, EB and EC and water drainage over parts marked UX, MZ, A, QA, G, YX, B, C, D, E, F, FZ, FF, HZ, JZ, KZ, EB, EC and IZ on DP 436892 created by Easement Instrument 6697280.12 - 19.12.2005 at 9:00 am

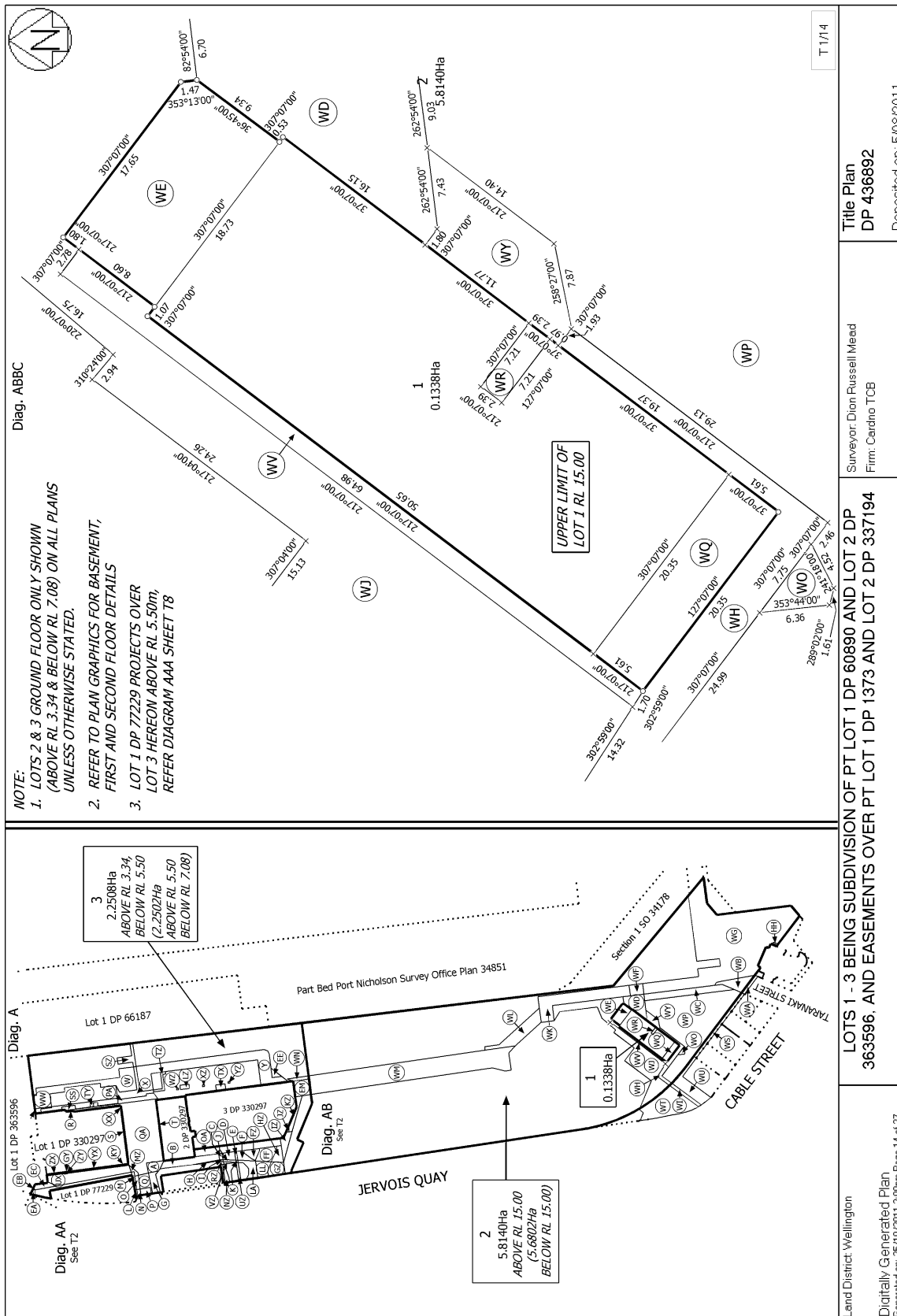
Appurtenant to part formerly contained in CT 227170 is a right of support created by Easement Instrument 6697280.12 - 19.12.2005 at 9:00 am

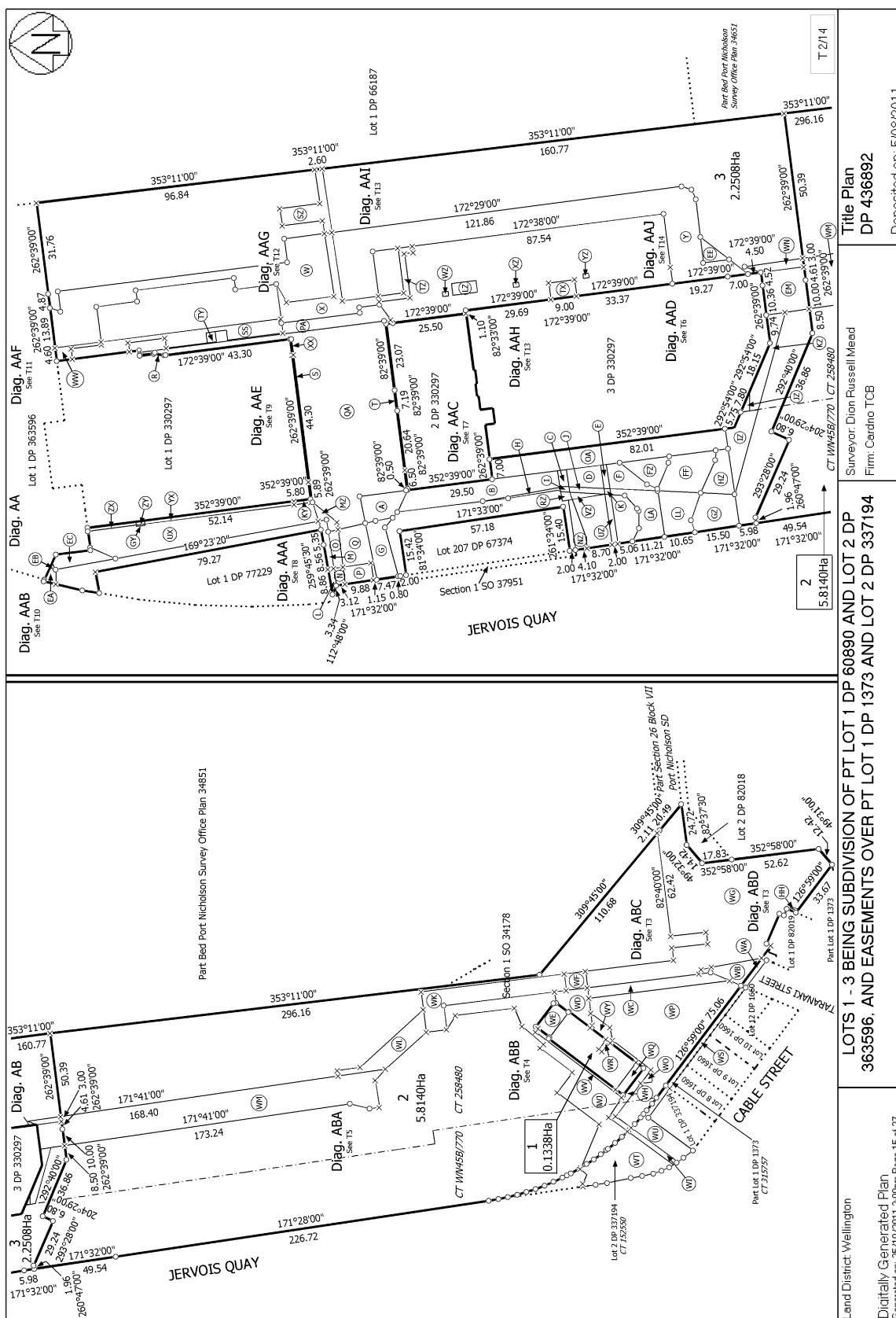
Subject to rights (in gross) to open spaces over parts marked OA, QA, T, S, XX, YX, ZX, R, PA, UX, MZ, EM, P, Q, N, O, L and M, a pedestrian right of way over parts marked FZ, WW, W, X, Y, EE and HZ, sewage drainage over parts marked WX, MZ, C, PA, X, QA, N, O, NZ, I, RZ, L, M and EB, a water supply over parts marked QA, WX, E, UZ, K, L, M, EB, N, O, P and Q, water drainage over the parts marked B, C, D, E, F, FZ, FF, HZ, JZ, KZ, RZ, VZ, J, K, LA, EM, GZ, EB and IZ and to a right of way over parts marked A, B, C, D, E, F, FF, G, H, I, J, K, LA and LL in favour of the Wellington City Council created by Easement Instrument 6697280.13 - 19.12.2005 at 9:00 am

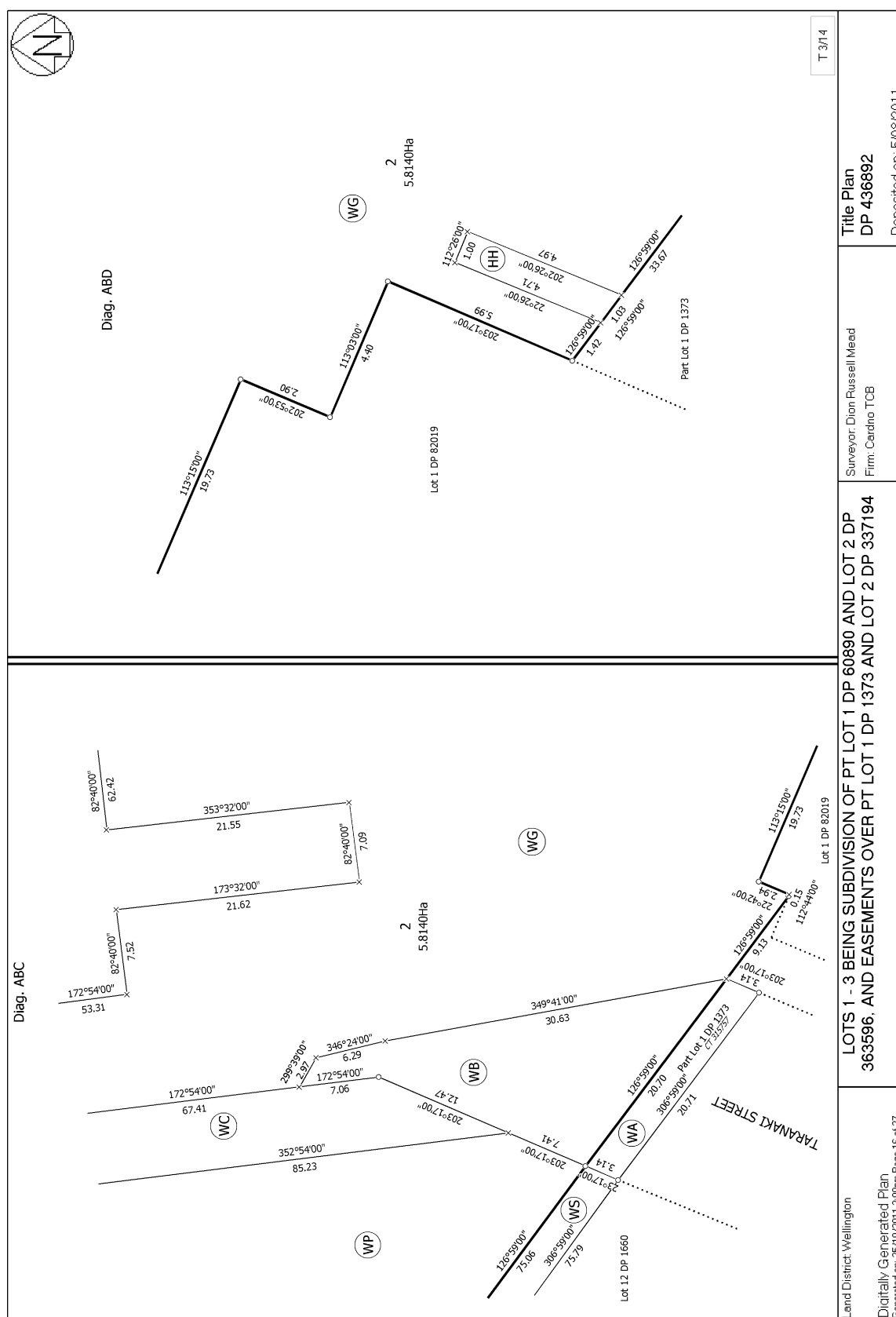
The easements created by Easement Instrument 6697280.13 are subject to Section 243 (a) Resource Management Act 1991

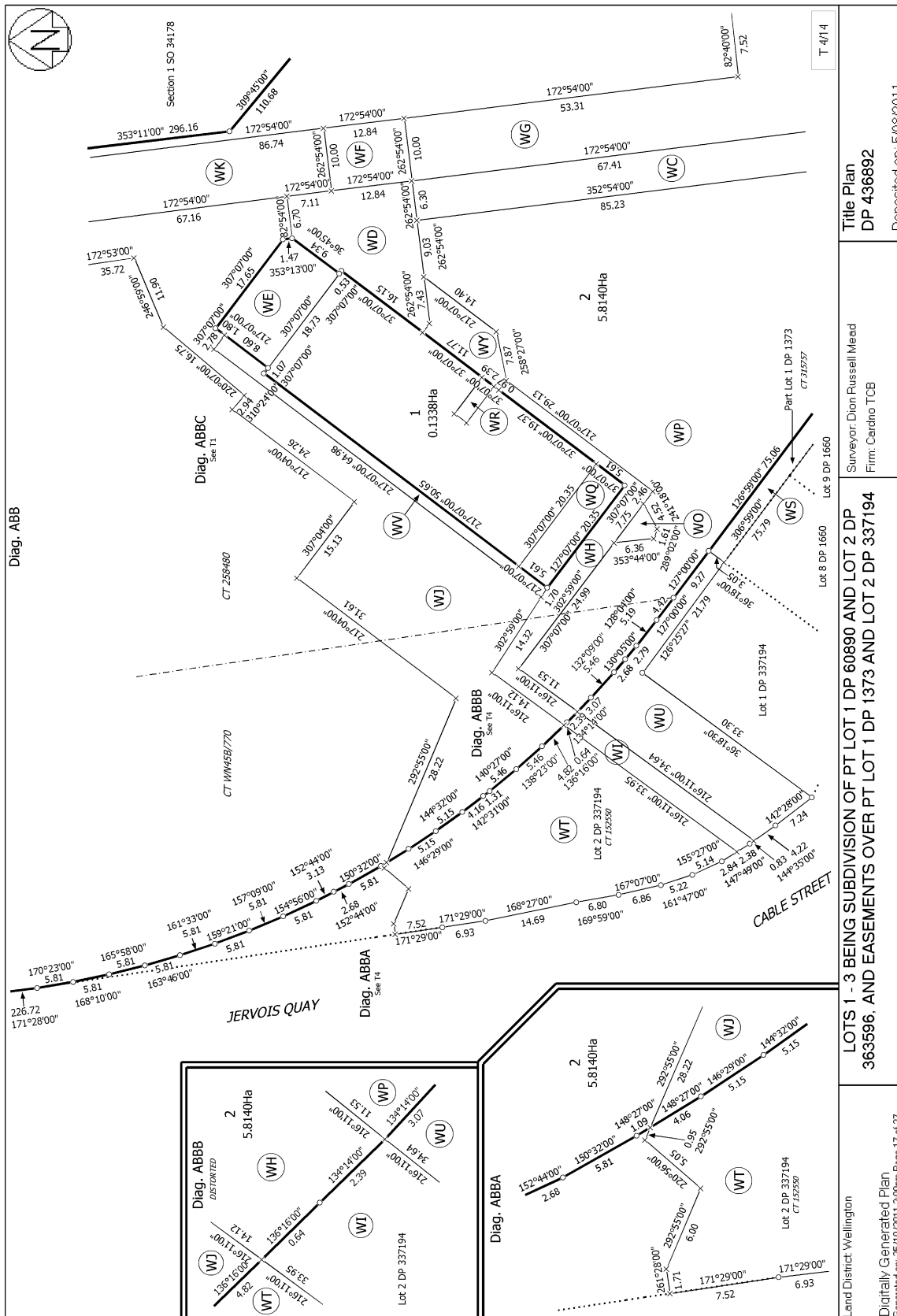
Subject to a right (in gross) to an open space easement over parts marked WN and EE on DP 436892 in favour of Wellington City Council created by Easement Instrument 8804276.4 - 5.8.2011 at 10:52 am

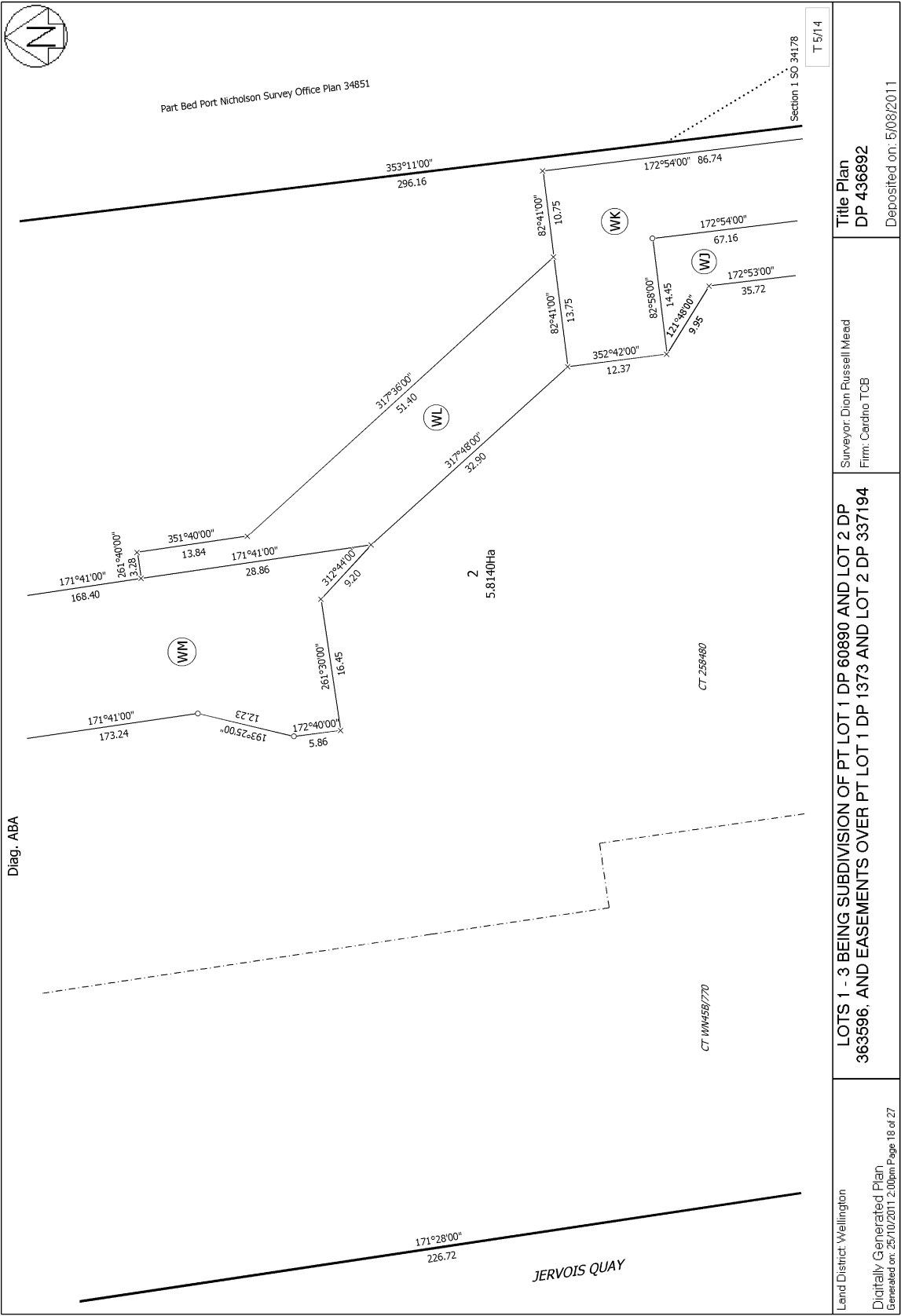
The easements created by Easement Instrument 8804276.4 are subject to Section 243 (a) Resource Management Act 1991











Title Plan
DP 436892

Deposited on: 5/08/2011

Surveyor: Dion Russell Mead
Firm: Cardno TCB

LOTS 1 - 3 BEING SUBDIVISION OF PT LOT 1 DP 60890 AND LOT 2 DP 363596, AND EASEMENTS OVER PT LOT 1 DP 1373 AND LOT 2 DP 337194

Land District: Wellington
Digitally Generated Plan
Generated on: 25/10/2011 2:00pm Page 18 of 27

