

a t h f i e l d
a r c h i t e c t s
l i m i t e d
a t h f i e l d
a r c h i t e c t s
l i m i t e d
a t h f i e l d

**WILLIS
BOND**



20.42 One Tasman Pukeahu Park
Resource Consent
Architectural Drawings
13 January 2022

athfieldarchitects.co.nz

105 Amritsar Street
Wellington 6035
PO Box 3364
Wellington 6140
New Zealand
Tel 64 4 499 1727

TASMAN APARTMENTS DRAWING LIST



20.42
One Tasman Pukeahu Park
Resource Consent
Architectural Drawings
13 January 2022

Page 2

a t h f i e l d
a r c h i t e c t s
l i m i t e d
a t h f i e l d
a r c h i t e c t s
l i m i t e d
a t h f i e l d

**WILLIS
BOND**

Design Drawings

0.0 Existing

		Scale @A3
RC_0.01	Location Plan	1:2000
RC_0.02	Existing Site Plan	1:1000
RC_0.03	Existing Elevations	1:400
RC_0.04	Existing Elevations	1:400

1.0 Proposed Plans

RC_1.00	Site Plan	1:1000
RC_1.00B	Lower Basement Plan	1:400
RC_1.01	Basement Plan	1:400
RC_1.02	Ground Plan	1:400
RC_1.03	Level 1 Plan	1:400
RC_1.04	Level 2 Plan	1:400
RC_1.05	Level 3 Plan	1:400
RC_1.06	Level 4 Plan	1:400
RC_1.07	Level 5 Plan	1:400
RC_1.08	Level 6 Plan	1:400
RC_1.09	Level 7 Plan	1:400
RC_1.10	Level 8 Plan	1:400
RC_1.11	Level 9 Plan	1:400
RC_1.12	Roof Level Plan	1:400

2.0 Proposed Elevations

RC_2.00	North Elevation	1:400
RC_2.01	East Elevation	1:400
RC_2.02	South Elevation	1:400
RC_2.03	West Elevation	1:400

3.0 Proposed Sections

RC_3.00	Section - North Apartments	1:400
RC_3.01	Section - South Apartments	1:400
RC_3.02	Longitudinal Section A	1:400
RC_3.03	Longitudinal Section B	1:400

Appendices

Appendix 1	Existing and Proposed Townscape Views
Appendix 2	Existing and Proposed Sun Studies Winter Solstice Study for 33-37 Tasman Street



a t h f i e l d
 a r c h i t e c t s
 l i m i t e d
 a t h f i e l d
 a r c h i t e c t s
 l i m i t e d
 a t h f i e l d

105 AMRITSAR STREET
 WELLINGTON 6035
 PO BOX 3364
 WELLINGTON 6140
 NEW ZEALAND
 TEL 64 4 499 1727
 FAX 64 4 499 1960

MAIL@ATHFIELDARCHITECTS.CO.NZ
 WWW.ATHFIELDARCHITECTS.CO.NZ

NOTES:

KEY:



STRUCTURAL ENGINEER:
 Dunning Thornton Consultants

SERVICES ENGINEER:
 AURECON GROUP

FIRE ENGINEER:
 Holmes Fire

No.	Description	Date
01	Resource Consent	30.09.21

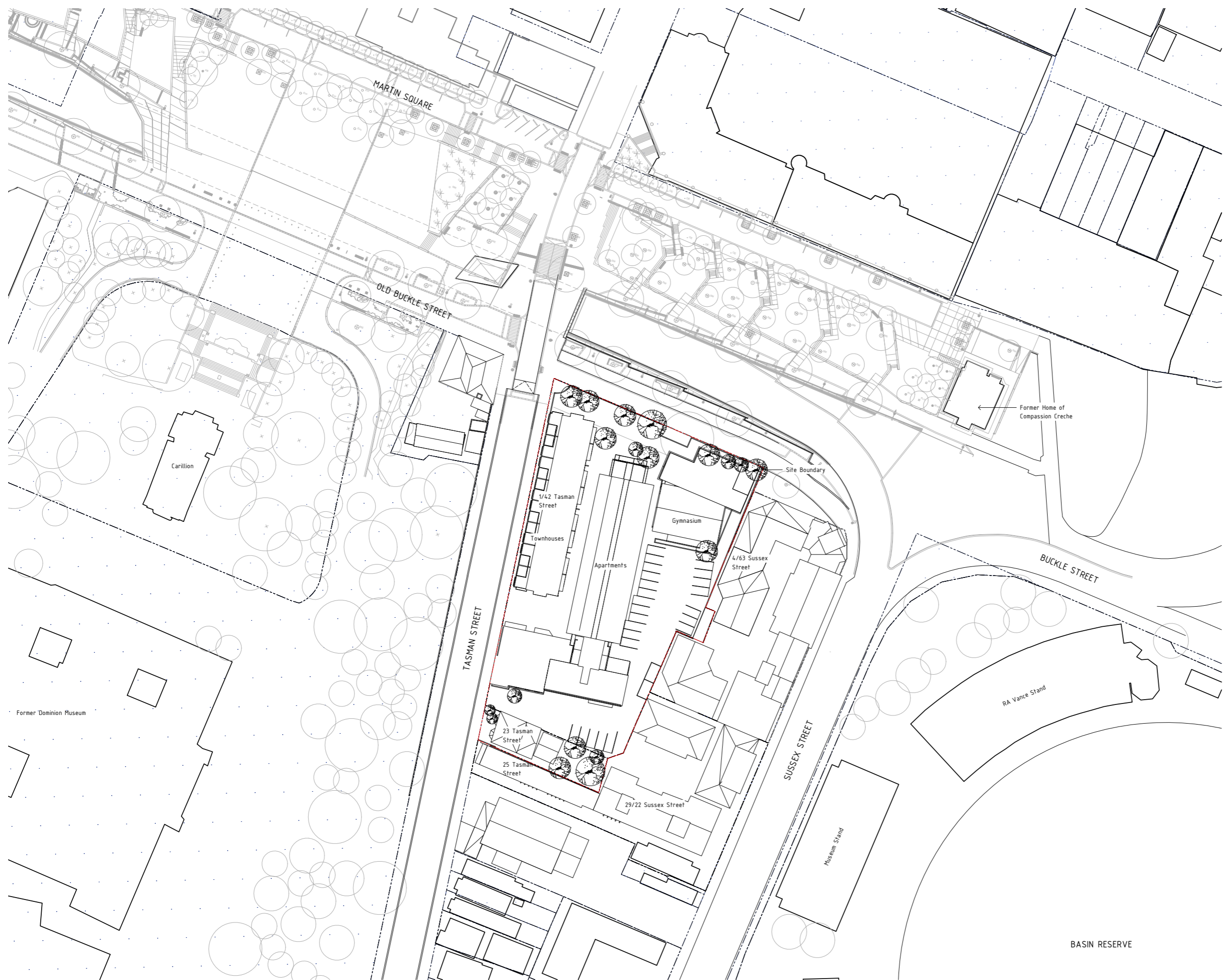


One Tasman Pukeahu Park 20-42
 1-23 Tasman Street

Location Plan

1 : 2000 @ A3

RC_0.01-



a t h f i e l d
 a r c h i t e c t s
 l i m i t e d
 a t h f i e l d
 a r c h i t e c t s
 l i m i t e d
 a t h f i e l d

105 AMRITSAR STREET
 WELLINGTON 6035
 PO BOX 3364
 WELLINGTON 6140
 NEW ZEALAND
 TEL 64 4 499 1727
 FAX 64 4 499 1960

MAIL@ATHFIELDARCHITECTS.CO.NZ
 WWW.ATHFIELDARCHITECTS.CO.NZ

NOTES:
 29 existing carparks



STRUCTURAL ENGINEER:
 Dunning Thornton Consultants

SERVICES ENGINEER:
 AURECON GROUP

FIRE ENGINEER:
 Holmes Fire

No.	Description	Date
01	Resource Consent	30.09.21



One Tasman Pukeahu Park 20-42
 1-23 Tasman Street

Existing Site Plan

1 : 1000 @ A3

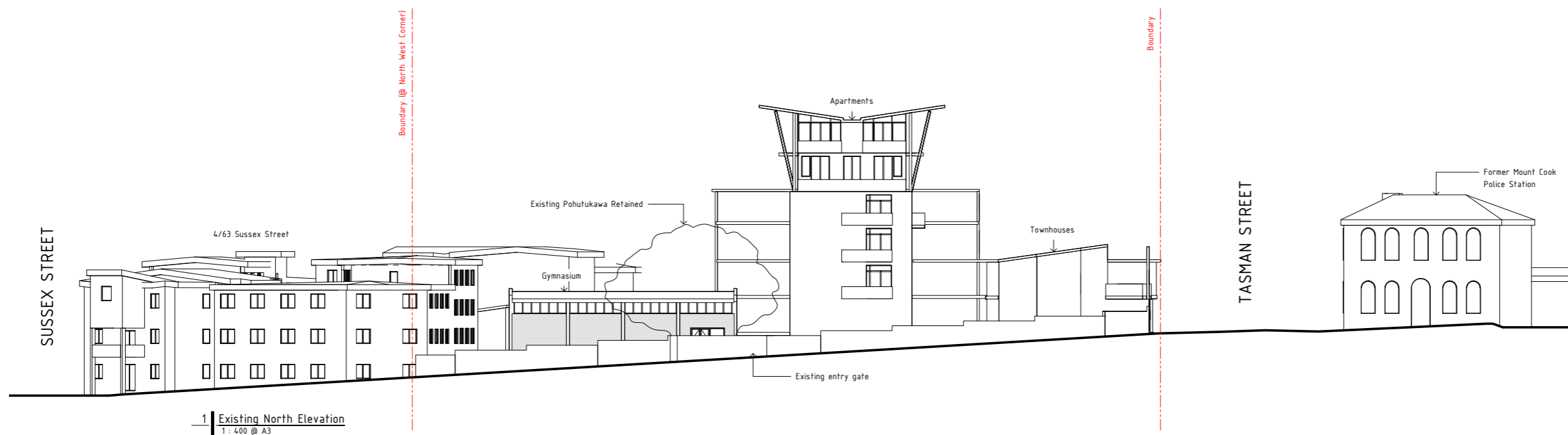
RC_0.02-

BASIN RESERVE

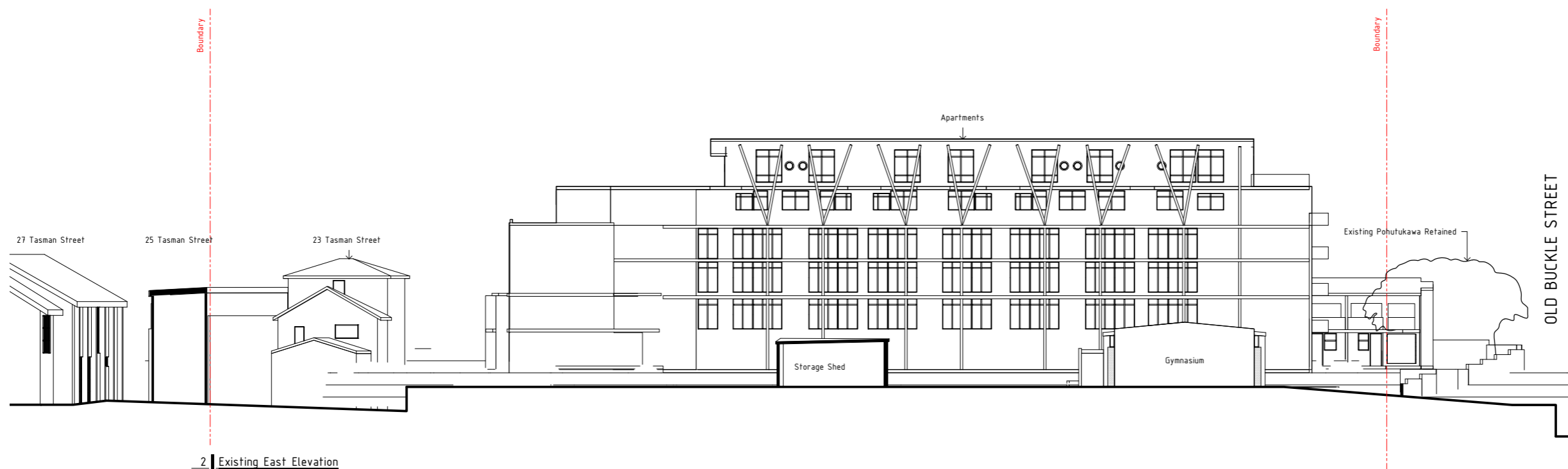
105 AMRITSAR STREET
 WELLINGTON 6035
 PO BOX 3364
 WELLINGTON 6140
 NEW ZEALAND
 TEL 64 4 499 1727
 FAX 64 4 499 1960

MAIL@ATHFIELDARCHITECTS.CO.NZ
 WWW.ATHFIELDARCHITECTS.CO.NZ

NOTES:



1 Existing North Elevation
 1: 400 @ A3



2 Existing East Elevation
 1: 400 @ A3

KEY:

STRUCTURAL ENGINEER:
 Dunning Thornton Consultants

SERVICES ENGINEER:
 AURECON GROUP

FIRE ENGINEER:
 Holmes Fire

No.	Description	Date
01	Resource Consent	30.09.21



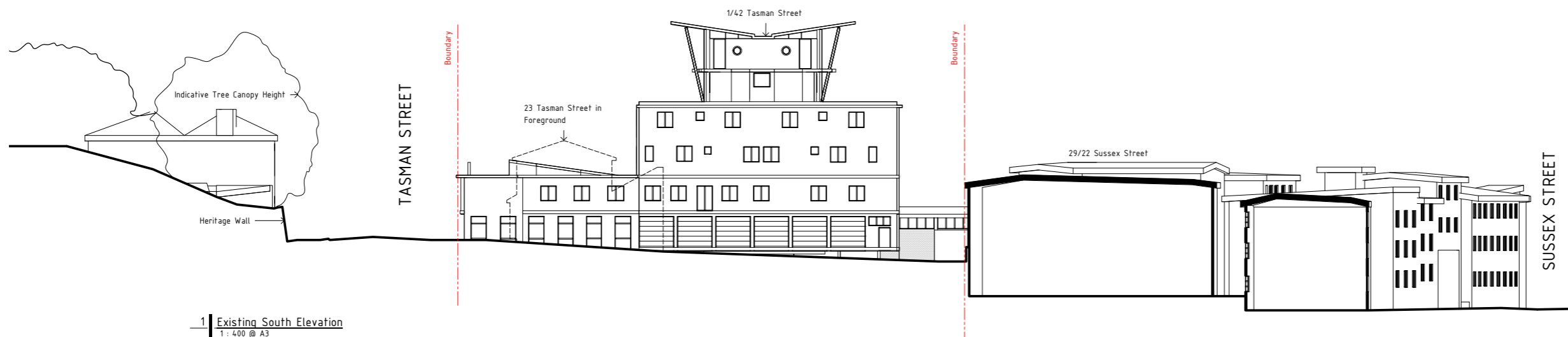
One Tasman Pukeahu Park 20-42
 1-23 Tasman Street

Existing Elevations

1: 400 @ A3

RC_0.03-

NOTES:



1 Existing South Elevation
 1 : 400 @ A3



2 Existing West Elevation
 1 : 400 @ A3

KEY:

STRUCTURAL ENGINEER:
 Dunning Thornton Consultants

SERVICES ENGINEER:
 AURECON GROUP

FIRE ENGINEER:
 Holmes Fire

No.	Description	Date
01	Resource Consent	30.09.21

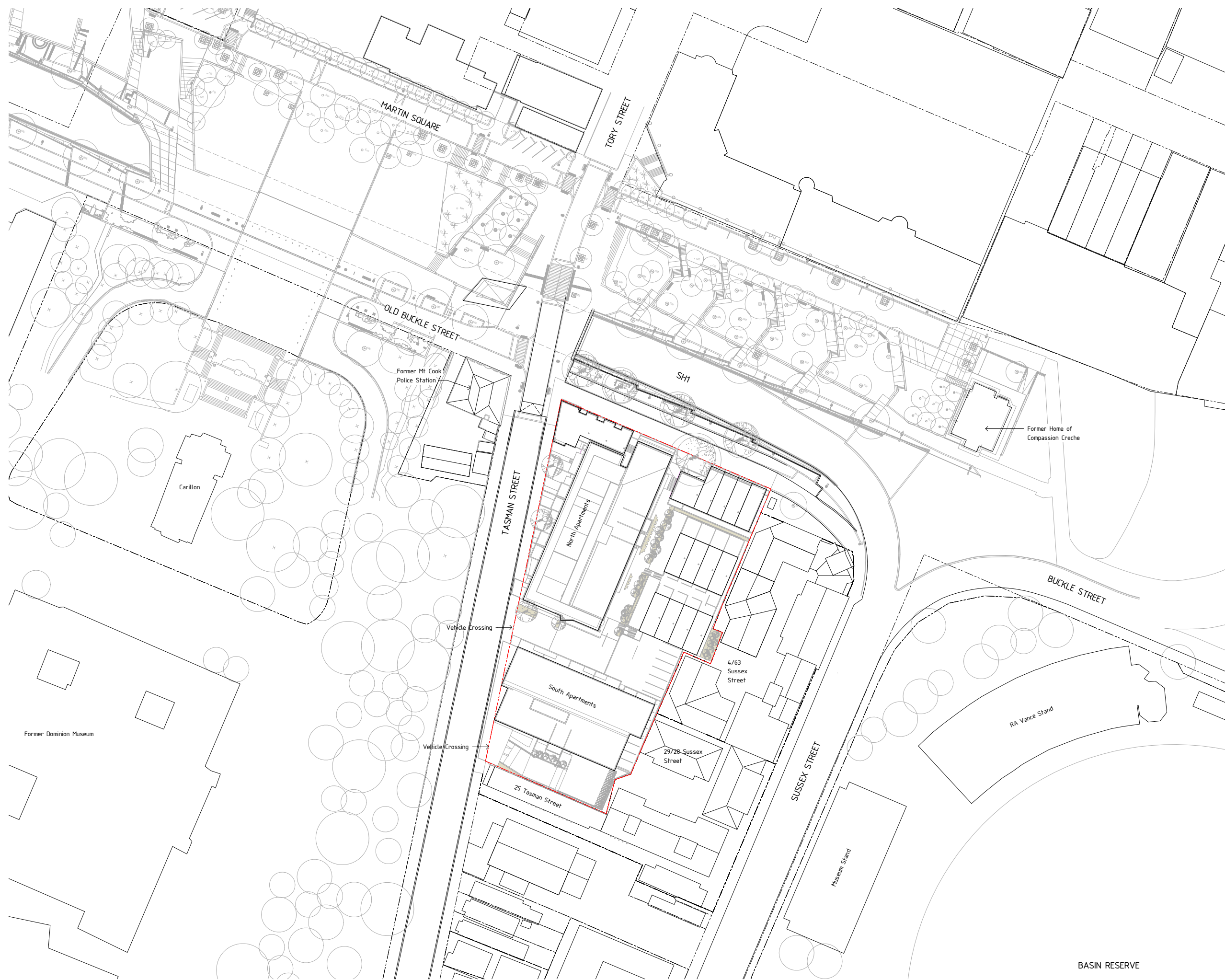


One Tasman Pukeahu Park 20-42
 1-23 Tasman Street

Existing Elevations

1 : 400 @ A3

RC_0.04-



a t h f i e l d
 a r c h i t e c t s
 l i m i t e d
 a t h f i e l d
 a r c h i t e c t s
 l i m i t e d
 a t h f i e l d

105 AMRITSAR STREET
 WELLINGTON 6035
 PO BOX 3364
 WELLINGTON 6140
 NEW ZEALAND
 TEL 64 4 499 1727
 FAX 64 4 499 1960

MAIL@ATHFIELDARCHITECTS.CO.NZ
 WWW.ATHFIELDARCHITECTS.CO.NZ

NOTES:



STRUCTURAL ENGINEER:
 Dunning Thornton Consultants

SERVICES ENGINEER:
 AURECON GROUP

FIRE ENGINEER:
 Holmes Fire

No.	Description	Date
01	Resource Consent	30.09.21
02	RC Updates	20.10.22
03	Resource Consent	13.01.23



One Tasman Pukeahu Park 20-42
 Wellington

Proposed Site Plan

1 : 1000 @ A3

RC 1.00-

BASIN RESERVE

NOTES:

- Apartments
- Townhouses
- Cafe
- Apartment Amenities
- Circulation
- Lifts
- Stairwell
- Services
- Covered Parking

KEY:



STRUCTURAL ENGINEER:
Dunning Thornton Consultants

SERVICES ENGINEER:
AURECON GROUP

FIRE ENGINEER:
Holmes Fire

No.	Description	Date
01	Resource Consent	13.01.23

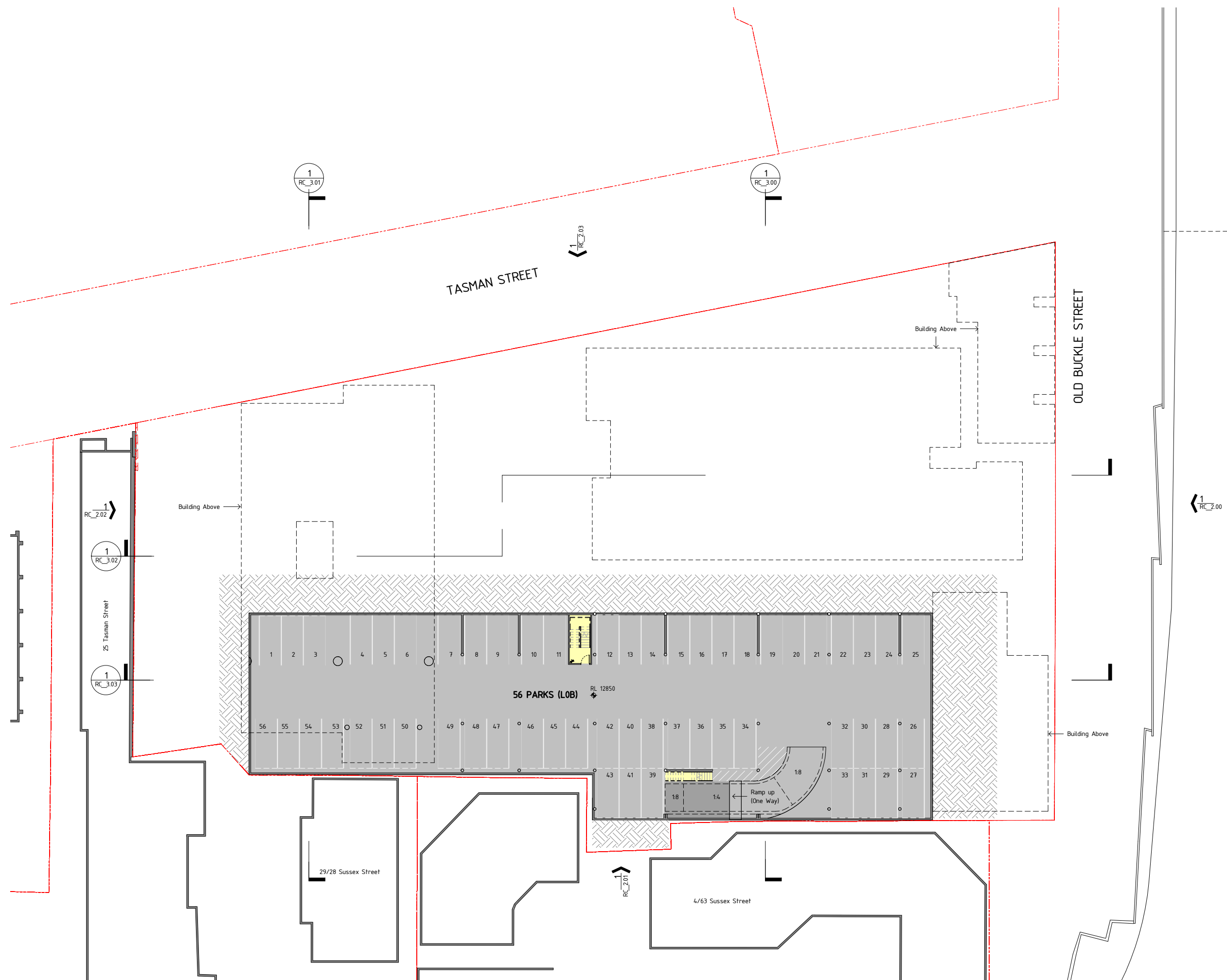


One Tasman Pukeahu Park 20-42
Wellington

GA Plan Lower Basement

1 : 400 @ A3

RC_1.00B-



1 | RC_GA Plan Lower Basement
1 : 400 @ A3

NOTES:

- Apartments
- Townhouses
- Cafe
- Apartment Amenities
- Circulation
- Lifts
- Stairwell
- Services
- Covered Parking

KEY:



STRUCTURAL ENGINEER:
Dunning Thornton Consultants

SERVICES ENGINEER:
AURECON GROUP

FIRE ENGINEER:
Holmes Fire

No.	Description	Date
01	Resource Consent	30.09.21
02	RC Updates	20.10.22
03	Resource Consent	13.01.23

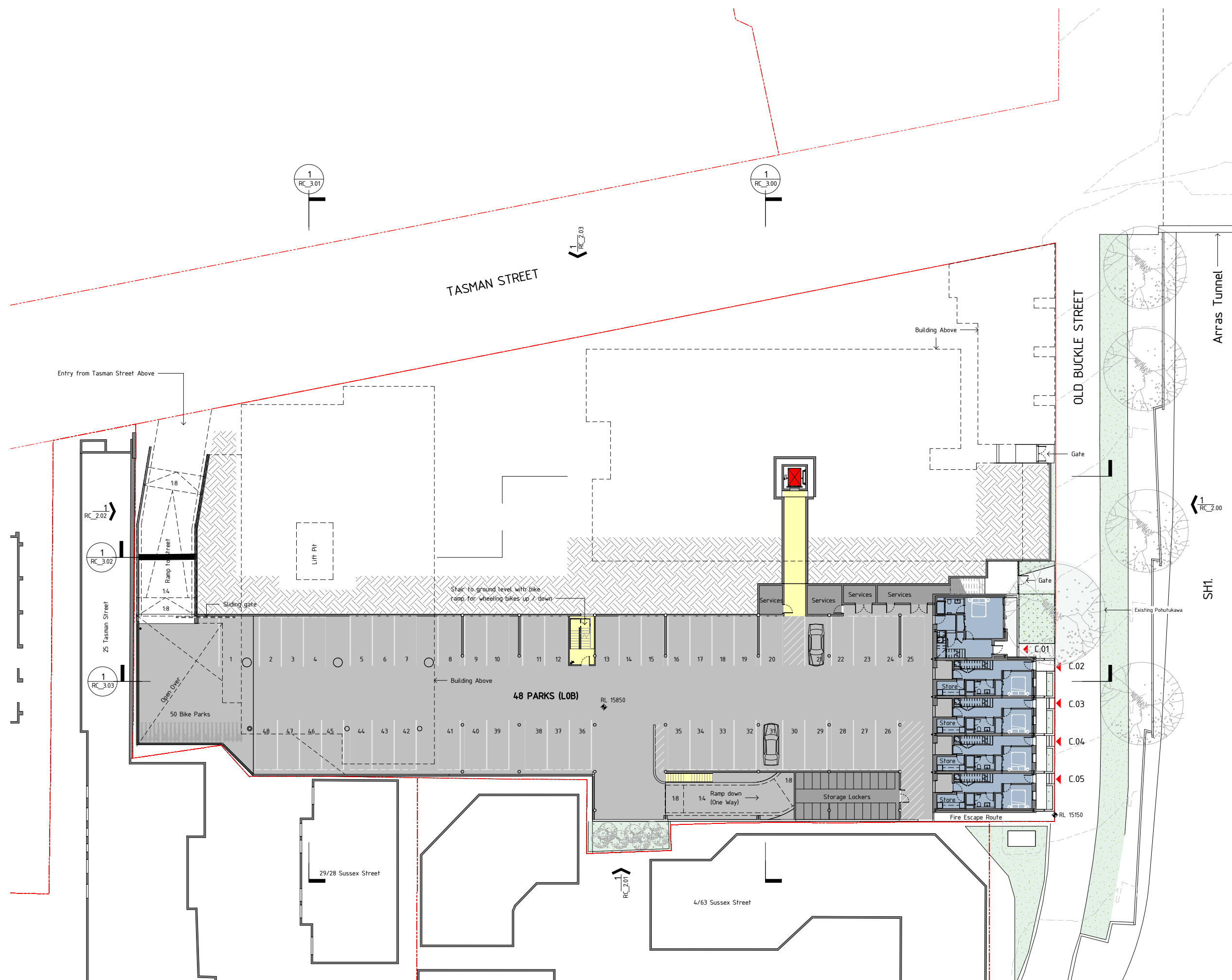


One Tasman Pukeahu Park 20-42
Wellington

GA Plan Basement

1 : 400 @ A3

RC_1.01-



NOTES:

- Apartments
- Townhouses
- Cafe
- Apartment Amenities
- Circulation
- Lifts
- Stairwell
- Services
- Covered Parking

KEY:



STRUCTURAL ENGINEER:
Dunning Thornton Consultants

SERVICES ENGINEER:
AURECON GROUP

FIRE ENGINEER:
Holmes Fire

No.	Description	Date
01	Resource Consent	30.09.21
02	RC Updates	20.10.22
03	Resource Consent	13.01.23



One Tasman Pukeahu Park 20-42
Wellington

GA Plan Ground

1: 400 @ A3

RC_1.02-



NOTES:

- Apartments
- Townhouses
- Cafe
- Apartment Amenities
- Circulation
- Lifts
- Stairwell
- Services
- Covered Parking

KEY:



STRUCTURAL ENGINEER:
Dunning Thornton Consultants

SERVICES ENGINEER:
AURECON GROUP

FIRE ENGINEER:
Holmes Fire

No.	Description	Date
01	Resource Consent	30.09.21
02	RC Updates	20.10.22
03	Resource Consent	13.01.23



One Tasman Pukeahu Park 20-42
Wellington

GA Plan Level 01

1 : 400 @ A3

RC 1.03-



NOTES:

- Apartments
- Townhouses
- Cafe
- Apartment Amenities
- Circulation
- Lifts
- Stairwell
- Services
- Covered Parking

KEY:



STRUCTURAL ENGINEER:
Dunning Thornton Consultants

SERVICES ENGINEER:
AURECON GROUP

FIRE ENGINEER:
Holmes Fire

No.	Description	Date
01	Resource Consent	30.09.21
02	RC Updates	20.10.22
03	Resource Consent	13.01.23

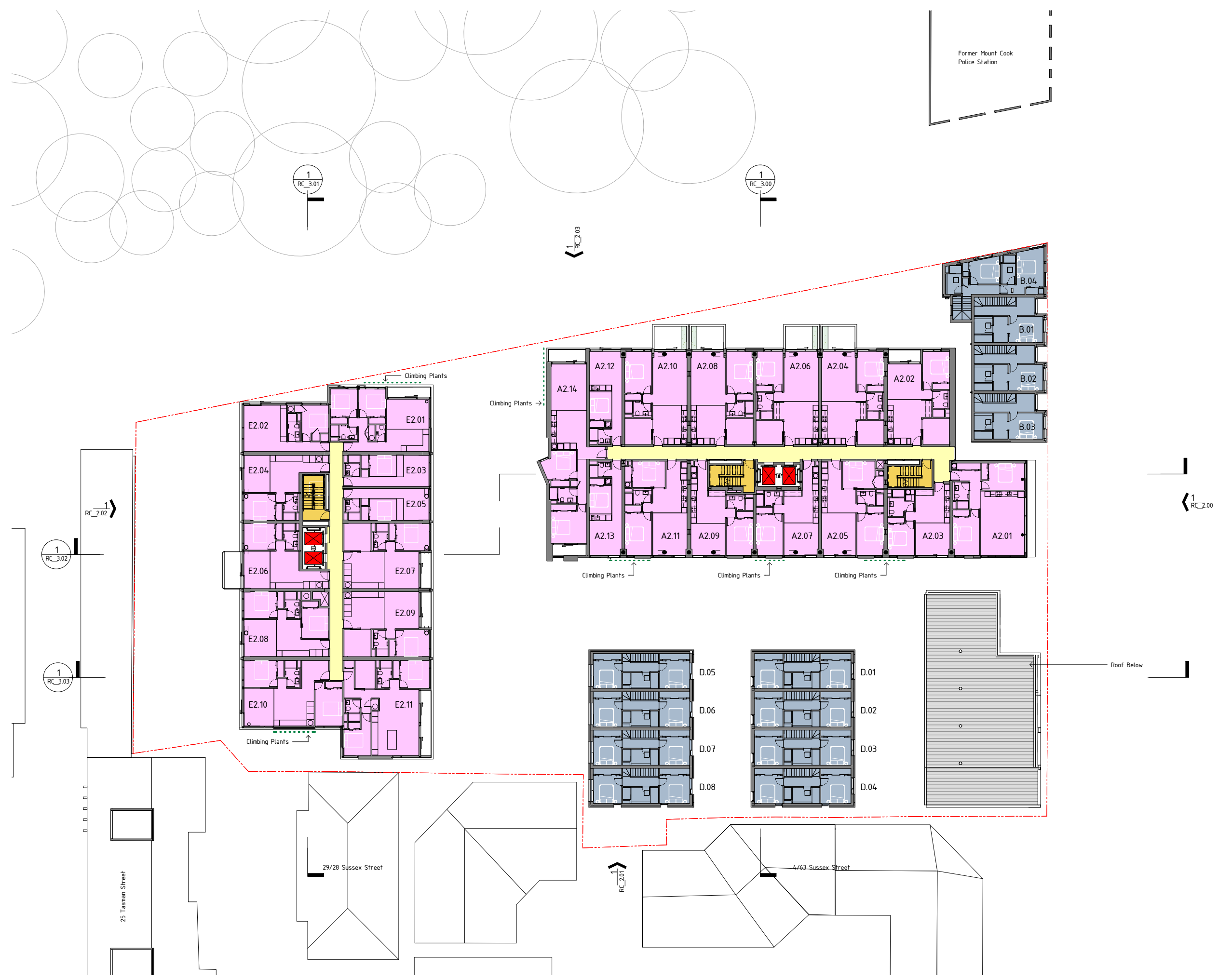


One Tasman Pukeahu Park 20-42
Wellington

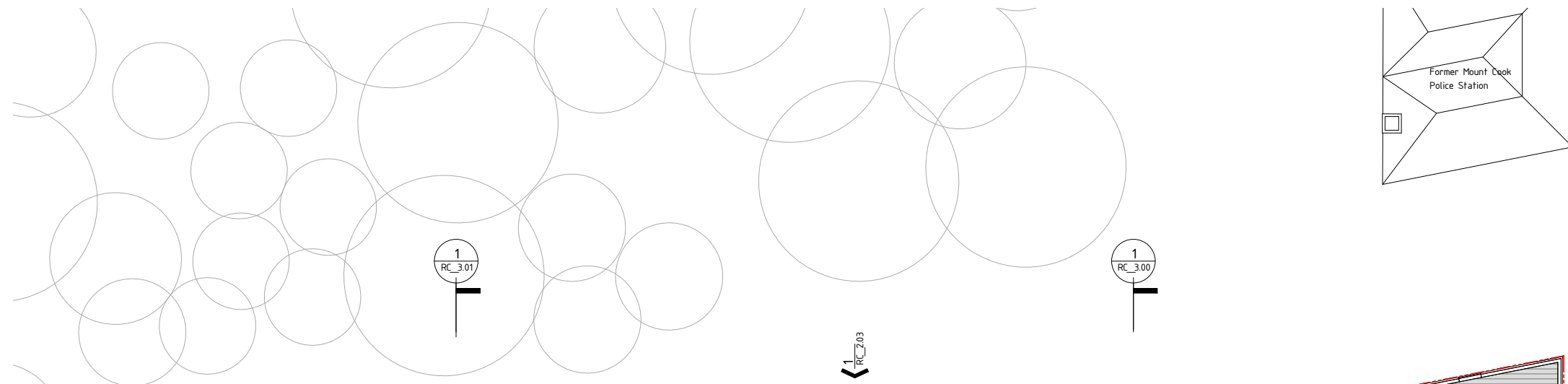
GA Plan Level 02

1 : 400 @ A3

RC_1.04-



1 | RC_GA Plan Level 02
1 : 400 @ A3



a t h f i e l d
a r c h i t e c t s
l i m i t e d
a t h f i e l d
a r c h i t e c t s
l i m i t e d
a t h f i e l d

105 AMRITSAR STREET
WELLINGTON 6035
PO BOX 3364
WELLINGTON 6140
NEW ZEALAND
TEL 64 4 499 1727
FAX 64 4 499 1960

MAIL@ATHFIELDARCHITECTS.CO.NZ
WWW.ATHFIELDARCHITECTS.CO.NZ

NOTES:

- Apartments
- Townhouses
- Cafe
- Apartment Amenities
- Circulation
- Lifts
- Stairwell
- Services
- Covered Parking

KEY:



STRUCTURAL ENGINEER:
Dunning Thornton Consultants

SERVICES ENGINEER:
AURECON GROUP

FIRE ENGINEER:
Holmes Fire

No.	Description	Date
01	Resource Consent	30.09.21
02	RC Updates	20.10.22
03	Resource Consent	13.01.23



One Tasman Pukeahu Park 20-42
Wellington

GA Plan Level 03

1 : 400 @ A3

RC_1.05-



1 RC_2.02

1 RC_3.02

1 RC_3.03

1 RC_3.01

1 RC_3.00

1 RC_2.03

1 RC_2.00

1 RC_2.01

NOTES:

- Apartments
- Townhouses
- Cafe
- Apartment Amenities
- Circulation
- Lifts
- Stairwell
- Services
- Covered Parking

KEY:



STRUCTURAL ENGINEER:
Dunning Thornton Consultants

SERVICES ENGINEER:
AURECON GROUP

FIRE ENGINEER:
Holmes Fire

No.	Description	Date
01	Resource Consent	30.09.21
02	RC Updates	20.10.22
03	Resource Consent	13.01.23

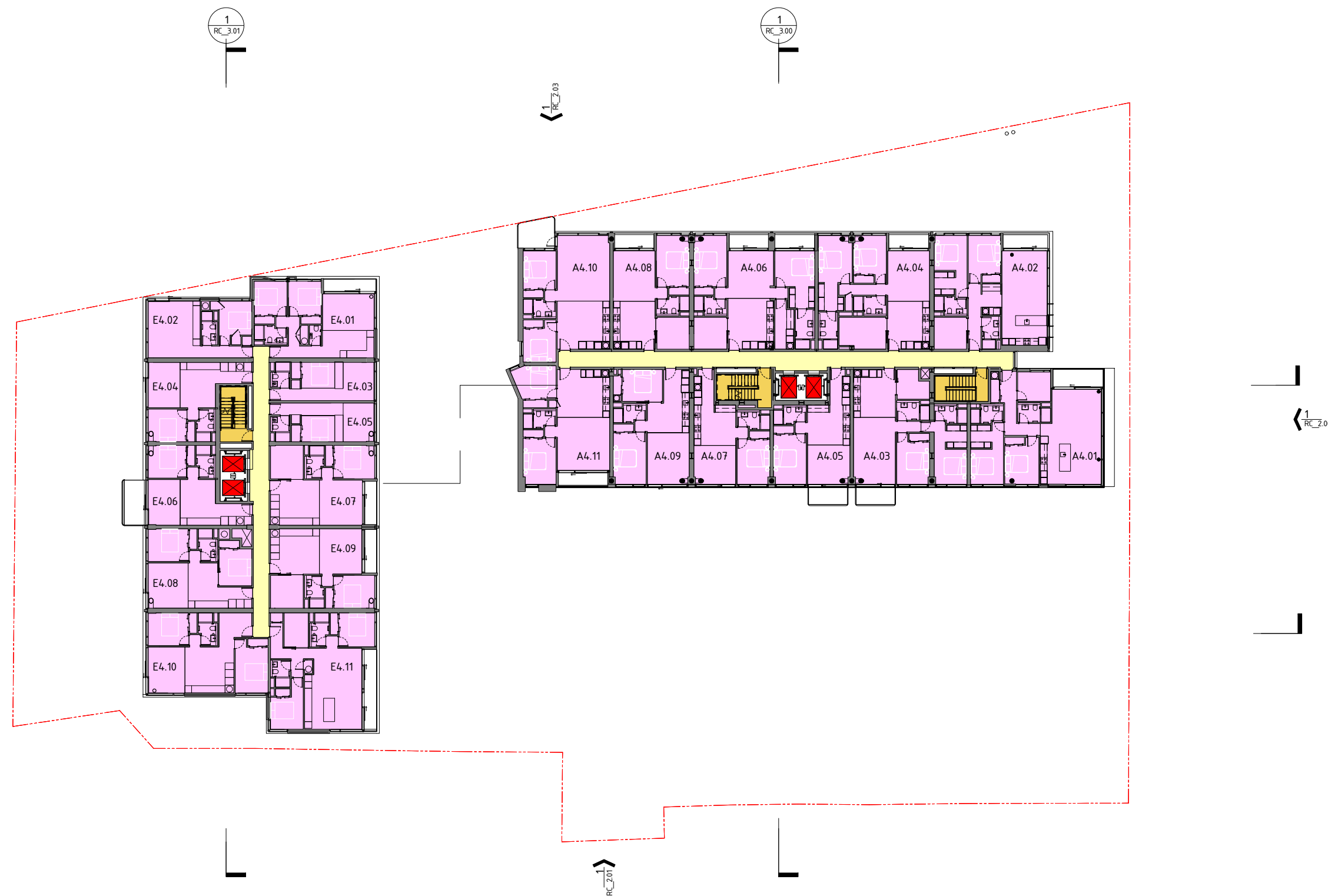


One Tasman Pukeahu Park 20-42
Wellington

GA Plan Level 04

1 : 400 @ A3

RC_1.06-



NOTES:

- Apartments
- Townhouses
- Cafe
- Apartment Amenities
- Circulation
- Lifts
- Stairwell
- Services
- Covered Parking

KEY:



STRUCTURAL ENGINEER:
Dunning Thornton Consultants

SERVICES ENGINEER:
AURECON GROUP

FIRE ENGINEER:
Holmes Fire

No.	Description	Date
01	Resource Consent	30.09.21
02	RC Updates	20.10.22
03	Resource Consent	13.01.23

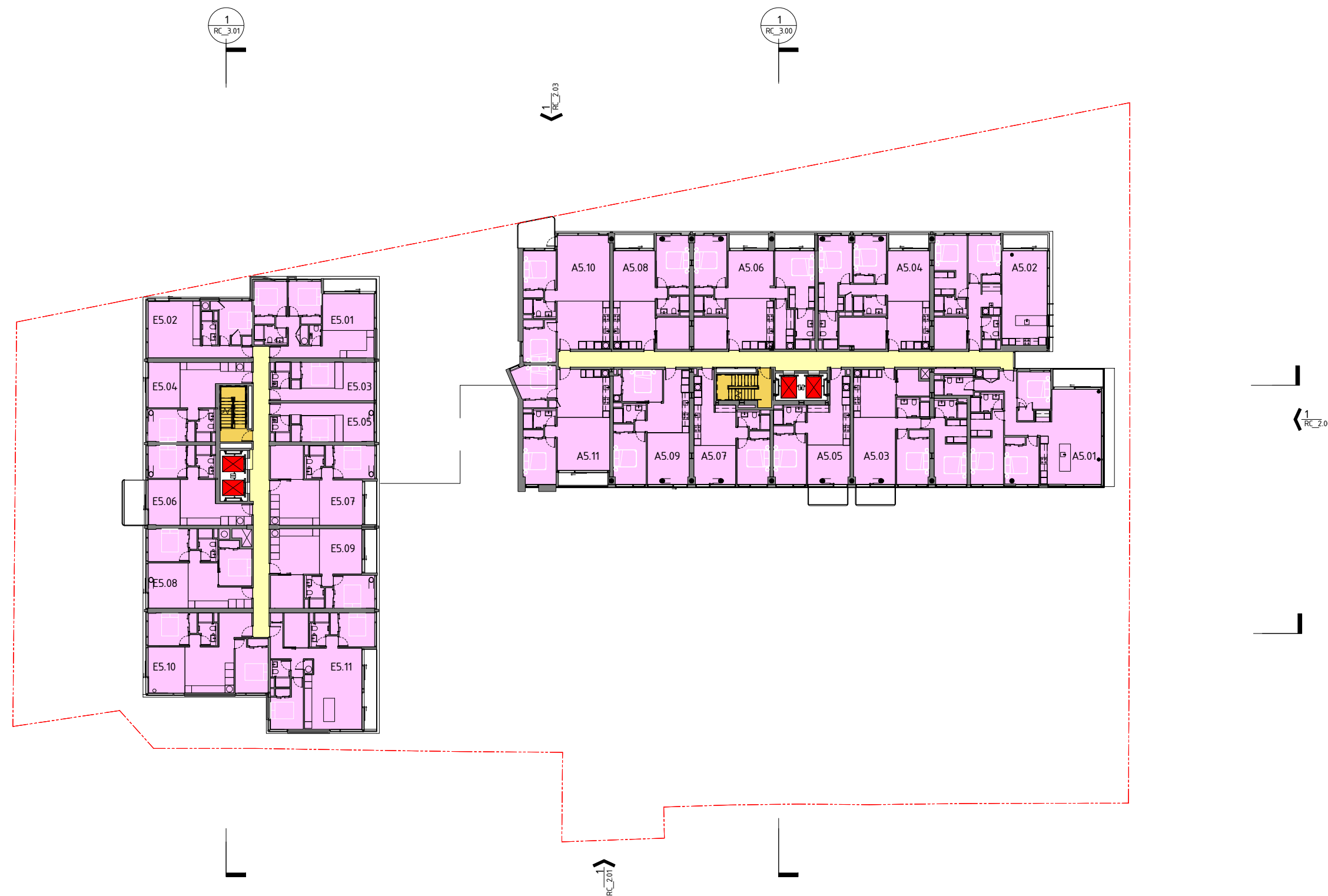


One Tasman Pukeahu Park 20-42
Wellington

GA Plan Level 05

1 : 400 @ A3

RC_1.07-



NOTES:

- Apartments
- Townhouses
- Cafe
- Apartment Amenities
- Circulation
- Lifts
- Stairwell
- Services
- Covered Parking

KEY:



STRUCTURAL ENGINEER:
Dunning Thornton Consultants

SERVICES ENGINEER:
AURECON GROUP

FIRE ENGINEER:
Holmes Fire

No.	Description	Date
01	Resource Consent	30.09.21
02	RC Updates	20.10.22
03	Resource Consent	13.01.23

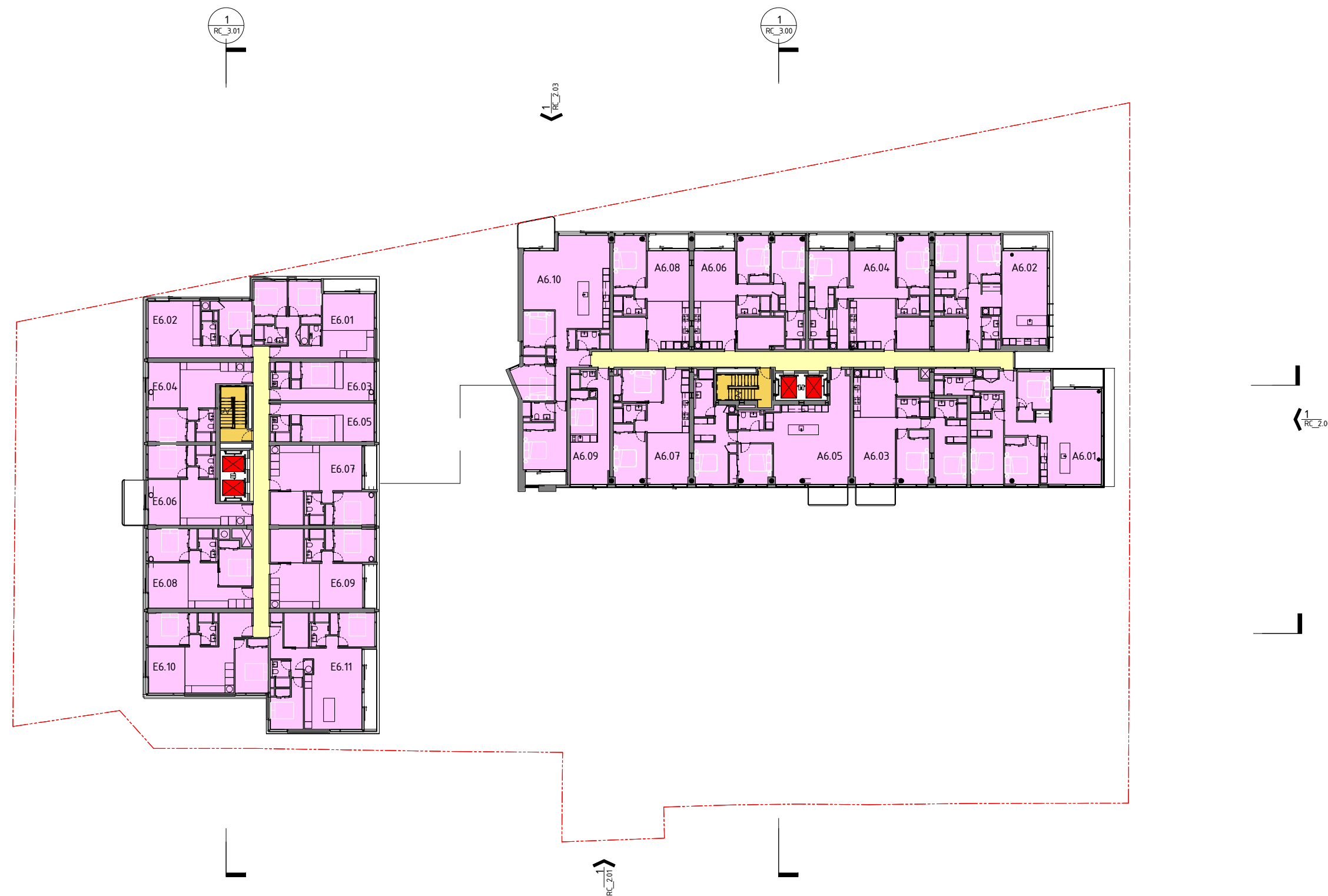


One Tasman Pukeahu Park 20-42
Wellington

GA Plan Level 06

1 : 400 @ A3

RC_1.08-



NOTES:

- Apartments
- Townhouses
- Cafe
- Apartment Amenities
- Circulation
- Lifts
- Stairwell
- Services
- Covered Parking

KEY:



STRUCTURAL ENGINEER:
 Dunning Thornton Consultants

SERVICES ENGINEER:
 AURECON GROUP

FIRE ENGINEER:
 Holmes Fire

No.	Description	Date
01	Resource Consent	30.09.21
02	RC Updates	20.10.22
03	Resource Consent	13.01.23

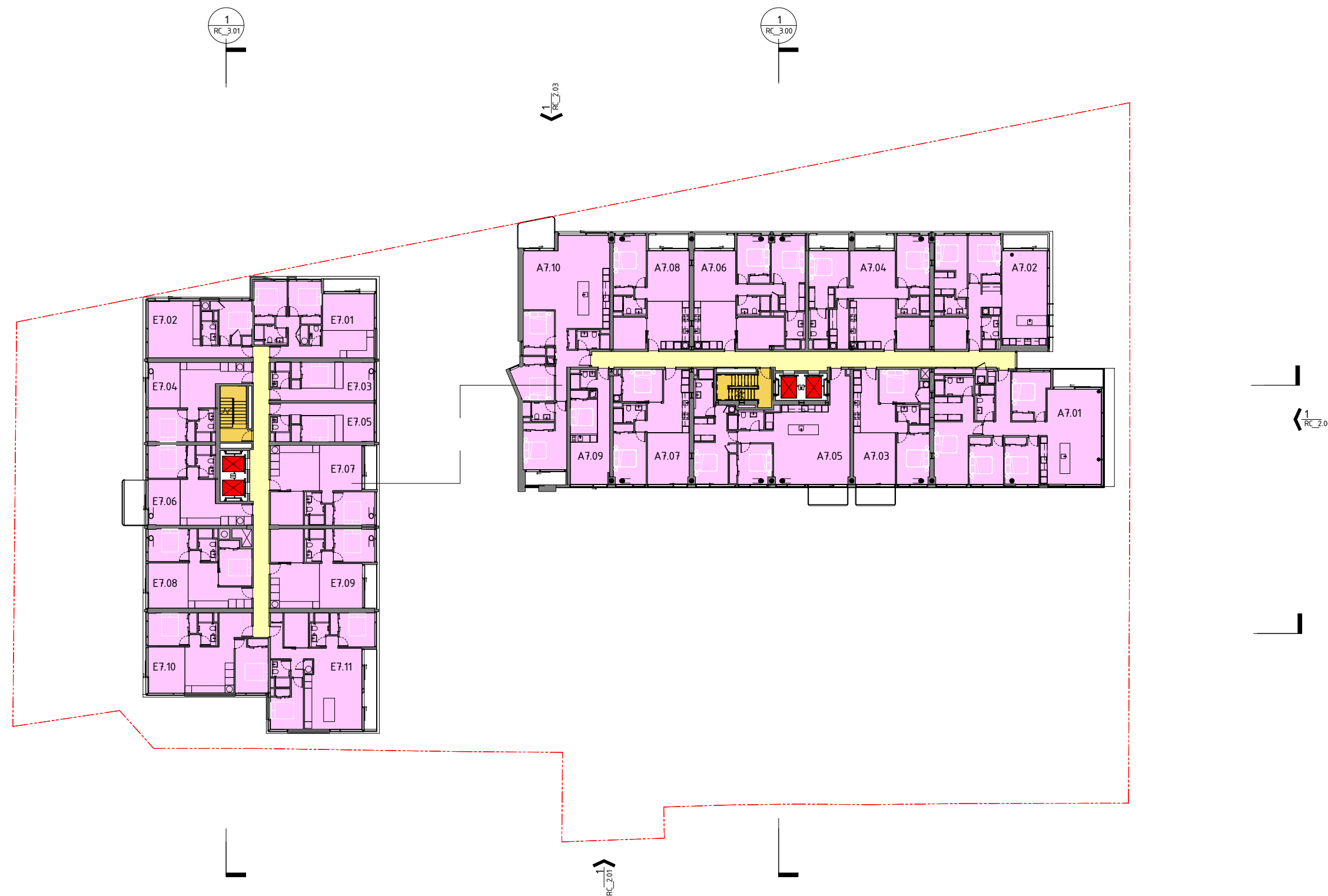


One Tasman Pukeahu Park 20-42
 Wellington

GA Plan Level 07

1 : 400 @ A3

RC_1.09-



NOTES:

- Apartments
- Townhouses
- Cafe
- Apartment Amenities
- Circulation
- Lifts
- Stairwell
- Services
- Covered Parking

KEY:



STRUCTURAL ENGINEER:
Dunning Thornton Consultants

SERVICES ENGINEER:
AURECON GROUP

FIRE ENGINEER:
Holmes Fire

No.	Description	Date
01	Resource Consent	30.09.21
02	RC Updates	20.10.22
03	Resource Consent	13.01.23

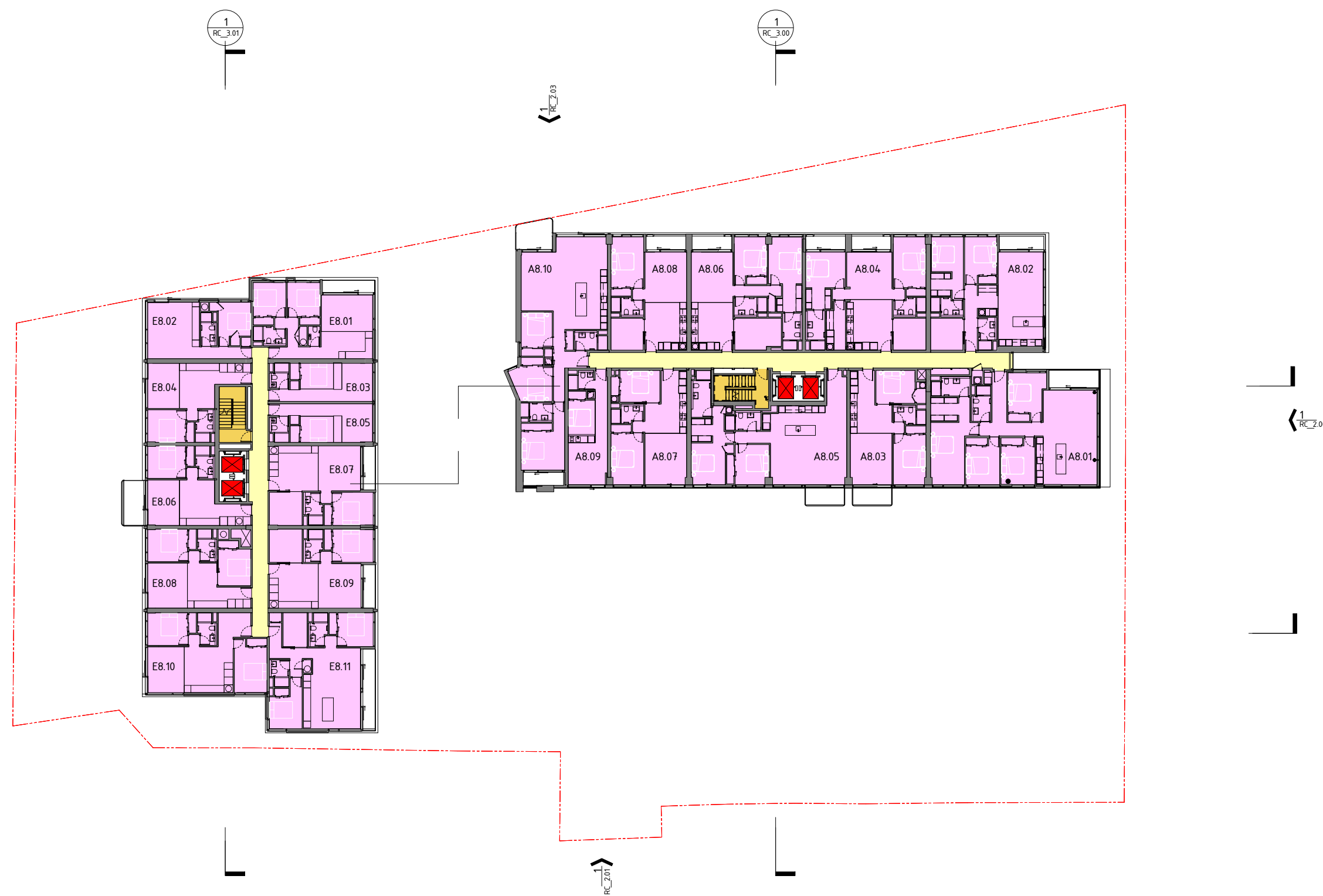


One Tasman Pukeahu Park 20-42
Wellington

GA Plan Level 08

1 : 400 @ A3

RC_1.10-



NOTES:

- Apartments
- Townhouses
- Cafe
- Apartment Amenities
- Circulation
- Lifts
- Stairwell
- Services
- Covered Parking

KEY:



STRUCTURAL ENGINEER:
Dunning Thornton Consultants

SERVICES ENGINEER:
AURECON GROUP

FIRE ENGINEER:
Holmes Fire

No.	Description	Date
01	Resource Consent	30.09.21
02	RC Updates	20.10.22
03	Resource Consent	13.01.23

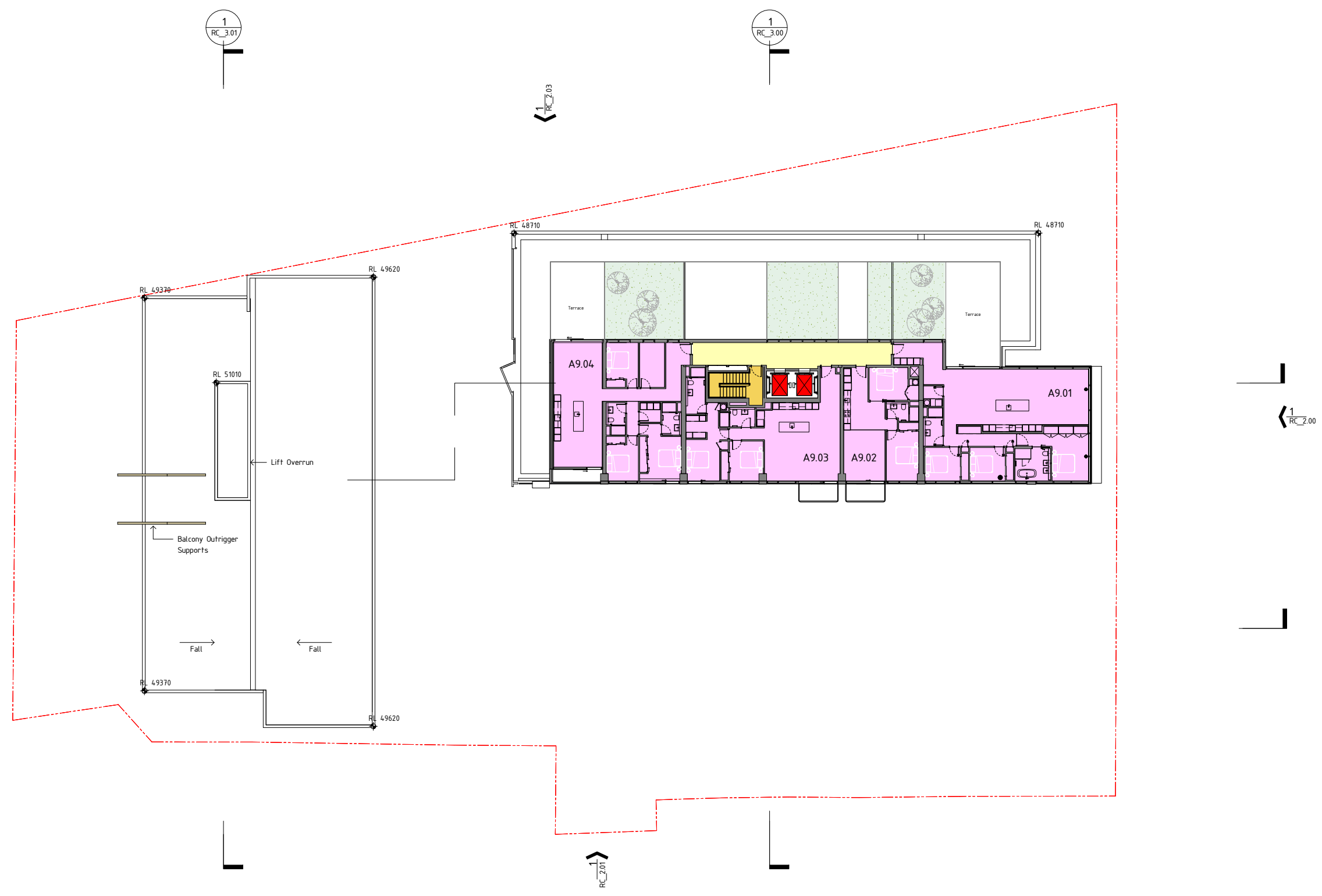


One Tasman Pukeahu Park 20-42
Wellington

GA Plan Level 09

1 : 400 @ A3

RC_1.11-



NOTES:

- Apartments
- Townhouses
- Cafe
- Apartment Amenities
- Circulation
- Lifts
- Stairwell
- Services
- Covered Parking

KEY:



STRUCTURAL ENGINEER:
Dunning Thornton Consultants

SERVICES ENGINEER:
AURECON GROUP

FIRE ENGINEER:
Holmes Fire

No.	Description	Date
01	Resource Consent	30.09.21
02	RC Updates	20.10.22
03	Resource Consent	13.01.23

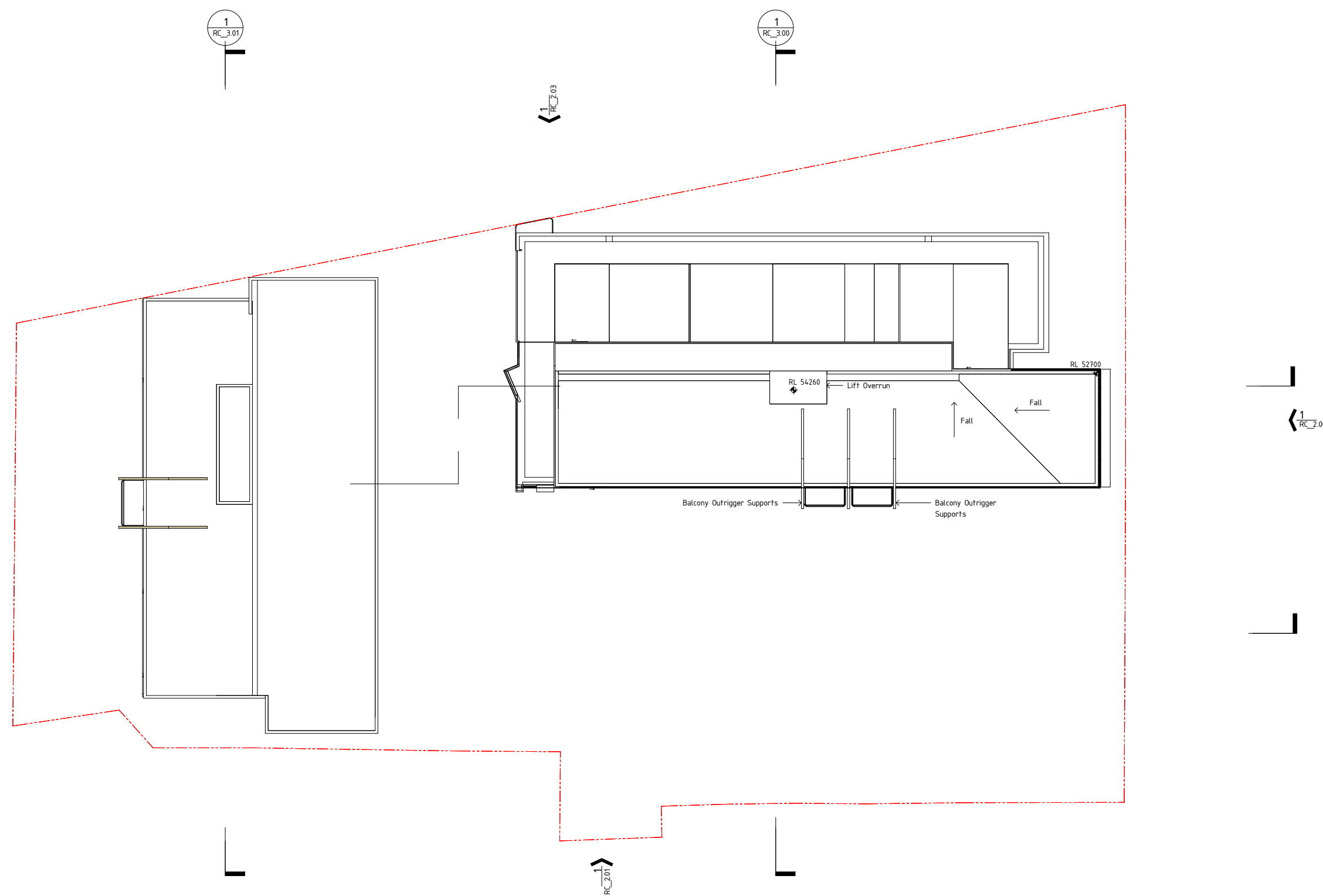


One Tasman Pukeahu Park 20-42
Wellington

GA Roof Plan

1 : 400 @ A3

RC_1.12-



Carillon Tower Reference Height

105 AMRITSAR STREET
WELLINGTON 6035
PO BOX 3364
WELLINGTON 6140
NEW ZEALAND
TEL 64 4 499 1727
FAX 64 4 499 1960

MAIL@ATHFIELDARCHITECTS.CO.NZ
WWW.ATHFIELDARCHITECTS.CO.NZ

NOTES:



1 | RC North Elevation
1:400 @ A3

KEY:

STRUCTURAL ENGINEER:
Dunning Thornton Consultants

SERVICES ENGINEER:
AURECON GROUP

FIRE ENGINEER:
Holmes Fire

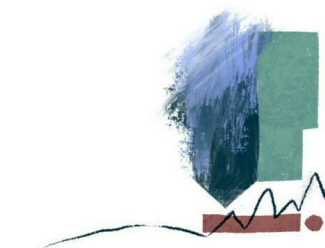
No.	Description	Date
01	Resource Consent	30.09.21
02	RC Updates	20.10.22
03	Resource Consent	13.01.23

A	Flush Glazed Aluminium Framed Shopfront Glazed pivot and sliding doors Large format operable door Integrated louvres for tenancy fresh air supply
B	Brick / Masonry
C	Metal Cladding Vertical format metal cassette panel Profiled metal sheet
D	Aluminium Window Suite Integrated spandrels, sliders, sashes and louvres

E	Expressed Spandrel Aluminium panel with white powdercoat finish, White extruded fibre reinforced panel (Fibre C (or Sim) Precast concrete spandrel, Modified cementitious plaster render system (Sto or Sim)
F	Glass Balustrade PC aluminium stanchions
G	Solid Balustrade Folded metal plate with powdercoat finish

H	Planter Stainless steel support wires for climbing plants
I	Concrete / Masonry Wall Paint finish
J	Exterior Sunshade / Louvre Metal profile with powdercoat finish
K	Terrace Balustrade Precast concrete panel with textured surface Sintered stone formatting panel Masonry

L	Spandrel Panel Sintered stone, Long format porcelain panel Glazed terracotta. GRC or sim.
M	Canopy Glazed pedestrian canopy with supporting structure.
N	Balcony Outrigger Support
O	GRC Facade Panels Horizontal plank format.



One Tasman Pukeahu Park 20-42
Wellington

Proposed North Elevation

1:400 @ A3

RC_2.00-

NOTES:

KEY:

STRUCTURAL ENGINEER:
Dunning Thornton Consultants

SERVICES ENGINEER:
AURECON GROUP

FIRE ENGINEER:
Holmes Fire

No.	Description	Date
01	Resource Consent	30.09.21
02	RC Updates	20.10.22
03	Resource Consent	13.01.23



One Tasman Pukeahu Park 20-42
Wellington

Proposed East Elevation

1 : 400 @ A3

RC_2.01-



- A Flush Glazed Aluminium Framed Shopfront**
Glazed pivot and sliding doors
Large format operable door
Integrated louvres for tenancy fresh air supply
- B Brick / Masonry**
- C Metal Cladding**
Vertical format metal cassette panel
Profiled metal sheet
- D Aluminium Window Suite**
Integrated spandrels, sliders, sashes and louvres

- E Exposed Spandrel**
Aluminium panel with white powdercoat finish,
White extruded fibre reinforced panel (Fibre C
(or Sim)
Precast concrete spandrel,
Modified cementitious plaster render system
(Sto or Sim)
- F Glass Balustrade**
PC aluminium stanchions
- G Solid Balustrade**
Folded metal plate with powdercoat finish

- H Planter**
Stainless steel support wires for climbing plants
- I Concrete / Masonry Wall**
Paint finish
- J Exterior Sunshade / Louvre**
Metal profile with powdercoat finish
- K Terrace Balustrade**
Precast concrete panel with textured surface
Sintered stone formatting panel
Masonry

- L Spandrel Panel**
Sintered stone,
Long format porcelain panel
Glazed terracotta. GRC or sim.
- M Canopy**
Glazed pedestrian canopy with supporting
structure.
- N Balcony Outrigger Support**
- O GRC Facade Panels**
Horizontal plank format.

No.	Description	Date
01	Resource Consent	30.09.21
02	RC Updates	20.10.22
03	Resource Consent	13.01.23



One Tasman Pukeahu Park 20-42
Wellington

Proposed South Elevation

1: 400 @ A3

RC_2.02-

▼ Carillon Tower Reference Height

▼ Former Dominion Museum Building Reference Height



1 RC South Elevation
1: 400 @ A3

- A** **Flush Glazed Aluminium Framed Shopfront**
Glazed pivot and sliding doors
Large format operable door
Integrated louvres for tenancy fresh air supply
- B** **Brick / Masonry**
- C** **Metal Cladding**
Vertical format metal cassette panel
Profiled metal sheet
- D** **Aluminium Window Suite**
Integrated spandrels, sliders, sashes and louvres

- E** **Expressed Spandrel**
Aluminium panel with white powdercoat finish,
White extruded fibre reinforced panel (Fibre C
(or Sim)
Precast concrete spandrel,
Modified cementitious plaster render system
(Sto or Sim)
- F** **Glass Balustrade**
PC aluminium stanchions
- G** **Solid Balustrade**
Folded metal plate with powdercoat finish

- H** **Planter**
Stainless steel support wires for climbing plants
- I** **Concrete / Masonry Wall**
Paint finish
- J** **Exterior Sunshade / Louvre**
Metal profile with powdercoat finish
- K** **Terrace Balustrade**
Precast concrete panel with textured surface
Sintered stone formatting panel
Masonry

- L** **Spandrel Panel**
Sintered stone,
Long format porcelain panel
Glazed terracotta. GRC or sim.
- M** **Canopy**
Glazed pedestrian canopy with supporting
structure.
- N** **Balcony Outrigger Support**
- O** **GRC Facade Panels**
Horizontal plank format.

NOTES:

KEY:

STRUCTURAL ENGINEER:
Dunning Thornton Consultants

SERVICES ENGINEER:
AURECON GROUP

FIRE ENGINEER:
Holmes Fire

No.	Description	Date
01	Resource Consent	30.09.21
02	RC Updates	20.10.22
03	Resource Consent	13.01.23



1 RC West Elevation
1:400 @ A3

- A** **Flush Glazed Aluminium Framed Shopfront**
Glazed pivot and sliding doors
Large format operable door
Integrated louvres for tenancy fresh air supply
- B** **Brick / Masonry**
- C** **Metal Cladding**
Vertical format metal cassette panel
Profiled metal sheet
- D** **Aluminium Window Suite**
Integrated spandrels, sliders, sashes and louvres

- E** **Expressed Spandrel**
Aluminium panel with white powdercoat finish,
White extruded fibre reinforced panel (Fibre C
(or Sim)
Precast concrete spandrel,
Modified cementitious plaster render system
(Sto or Sim)
- F** **Glass Balustrade**
PC aluminium stanchions
- G** **Solid Balustrade**
Folded metal plate with powdercoat finish

- H** **Planter**
Stainless steel support wires for climbing plants
- I** **Concrete / Masonry Wall**
Paint finish
- J** **Exterior Sunshade / Louvre**
Metal profile with powdercoat finish
- K** **Terrace Balustrade**
Precast concrete panel with textured surface
Sintered stone formatting panel
Masonry

- L** **Spandrel Panel**
Sintered stone,
Long format porcelain panel
Glazed terracotta. GRC or sim.
- M** **Canopy**
Glazed pedestrian canopy with supporting
structure.
- N** **Balcony Outrigger Support**
- O** **GRC Facade Panels**
Horizontal plank format.



One Tasman Pukeahu Park 20-42
Wellington

Proposed West Elevation

1:400 @ A3

RC_2.03-

105 AMRITSAR STREET
WELLINGTON 6035
PO BOX 3364
WELLINGTON 6140
NEW ZEALAND
TEL 64 4 499 1727
FAX 64 4 499 1960

MAIL@ATHFIELDARCHITECTS.CO.NZ
WWW.ATHFIELDARCHITECTS.CO.NZ

NOTES:

- Apartments
- Townhouses
- Cafe
- Apartment Amenities
- Circulation
- Lifts
- Stairwell
- Services
- Covered Parking

KEY:

STRUCTURAL ENGINEER:
Dunning Thornton Consultants

SERVICES ENGINEER:
AURECON GROUP

FIRE ENGINEER:
Holmes Fire

No.	Description	Date
01	Resource Consent	30.09.21
02	RC Updates	20.10.22
03	Resource Consent	13.01.23

Carillon Tower Reference Height

Former Dominion Museum Building Reference Height



One Tasman Pukeahu Park 20-42
Wellington

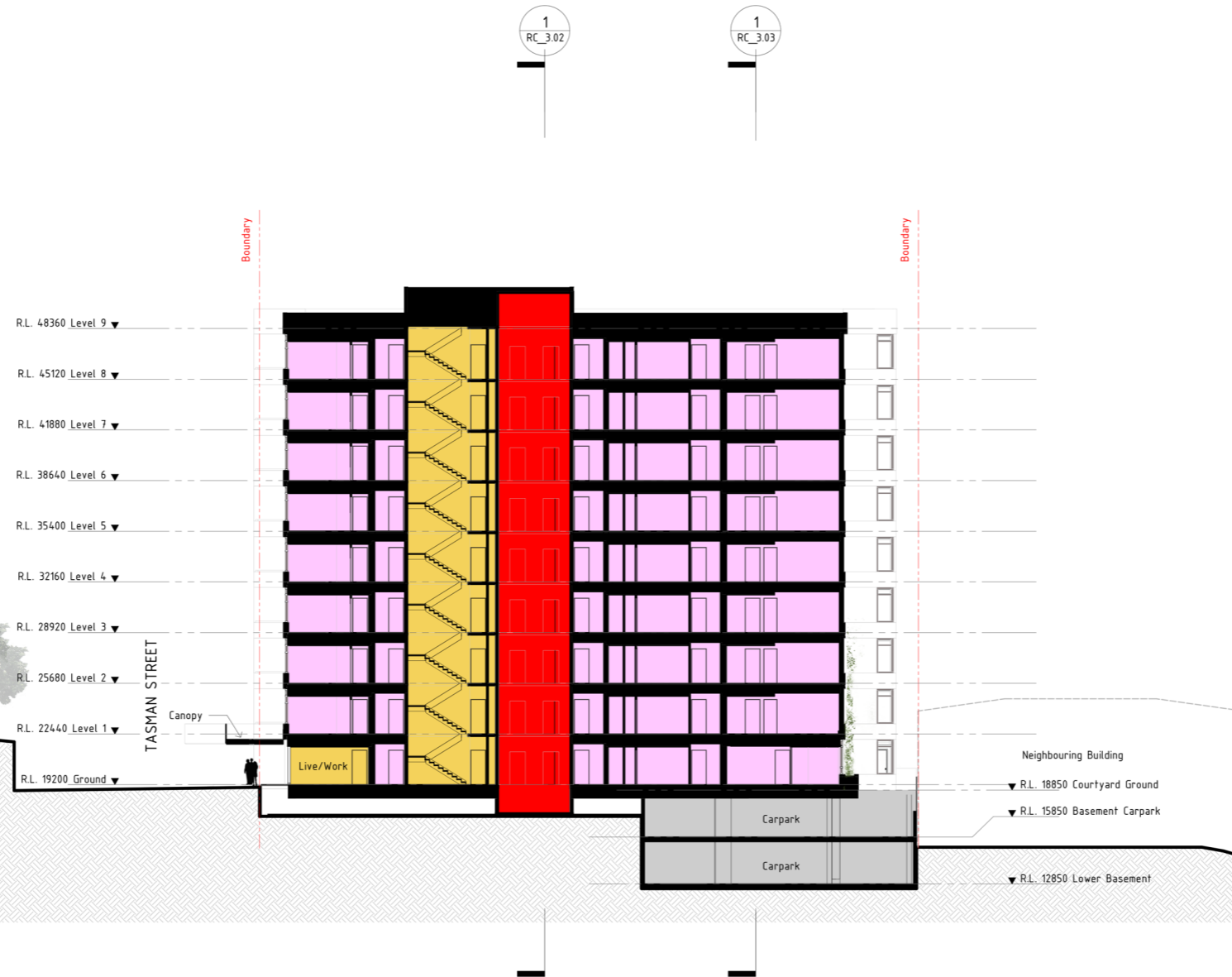
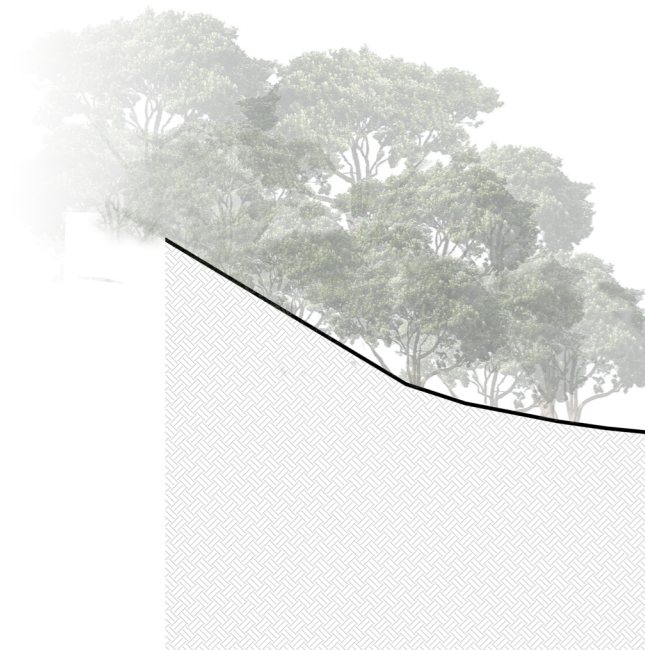
Proposed Section

1:400 @ A3

RC_3.00-

▼ Carillon Tower Reference Height

▼ Former Dominion Museum Building Reference Height



a t h f i e l d
a r c h i t e c t s
l i m i t e d
a t h f i e l d
a r c h i t e c t s
l i m i t e d
a t h f i e l d

105 AMRITSAR STREET
WELLINGTON 6035
PO BOX 3364
WELLINGTON 6140
NEW ZEALAND
TEL 64 4 499 1727
FAX 64 4 499 1960

MAIL@ATHFIELDARCHITECTS.CO.NZ
WWW.ATHFIELDARCHITECTS.CO.NZ

NOTES:

- Apartments
- Townhouses
- Cafe
- Apartment Amenities
- Circulation
- Lifts
- Stairwell
- Services
- Covered Parking

KEY:

STRUCTURAL ENGINEER:
Dunning Thornton Consultants

SERVICES ENGINEER:
AURECON GROUP

FIRE ENGINEER:
Holmes Fire

No.	Description	Date
01	Resource Consent	30.09.21
02	RC Updates	20.10.22
03	Resource Consent	13.01.23



One Tasman Pukeahu Park 20-42
Wellington

Proposed Section

1: 400 @ A3

RC_3.01-

105 AMRITSAR STREET
WELLINGTON 6035
PO BOX 3364
WELLINGTON 6140
NEW ZEALAND
TEL 64 4 499 1727
FAX 64 4 499 1960

MAIL@ATHFIELDARCHITECTS.CO.NZ
WWW.ATHFIELDARCHITECTS.CO.NZ

NOTES:

- Apartments
- Townhouses
- Cafe
- Apartment Amenities
- Circulation
- Lifts
- Stairwell
- Services
- Covered Parking

KEY:

STRUCTURAL ENGINEER:
Dunning Thornton Consultants

SERVICES ENGINEER:
AURECON GROUP

FIRE ENGINEER:
Holmes Fire

No.	Description	Date
01	Resource Consent	30.09.21
02	RC Updates	20.10.22
03	Resource Consent	13.01.23



One Tasman Pukeahu Park 20-42
Wellington

Proposed Section

1: 400 @ A3

RC_3.02-

NOTES:

- Apartments
- Townhouses
- Cafe
- Apartment Amenities
- Circulation
- Lifts
- Stairwell
- Services
- Covered Parking

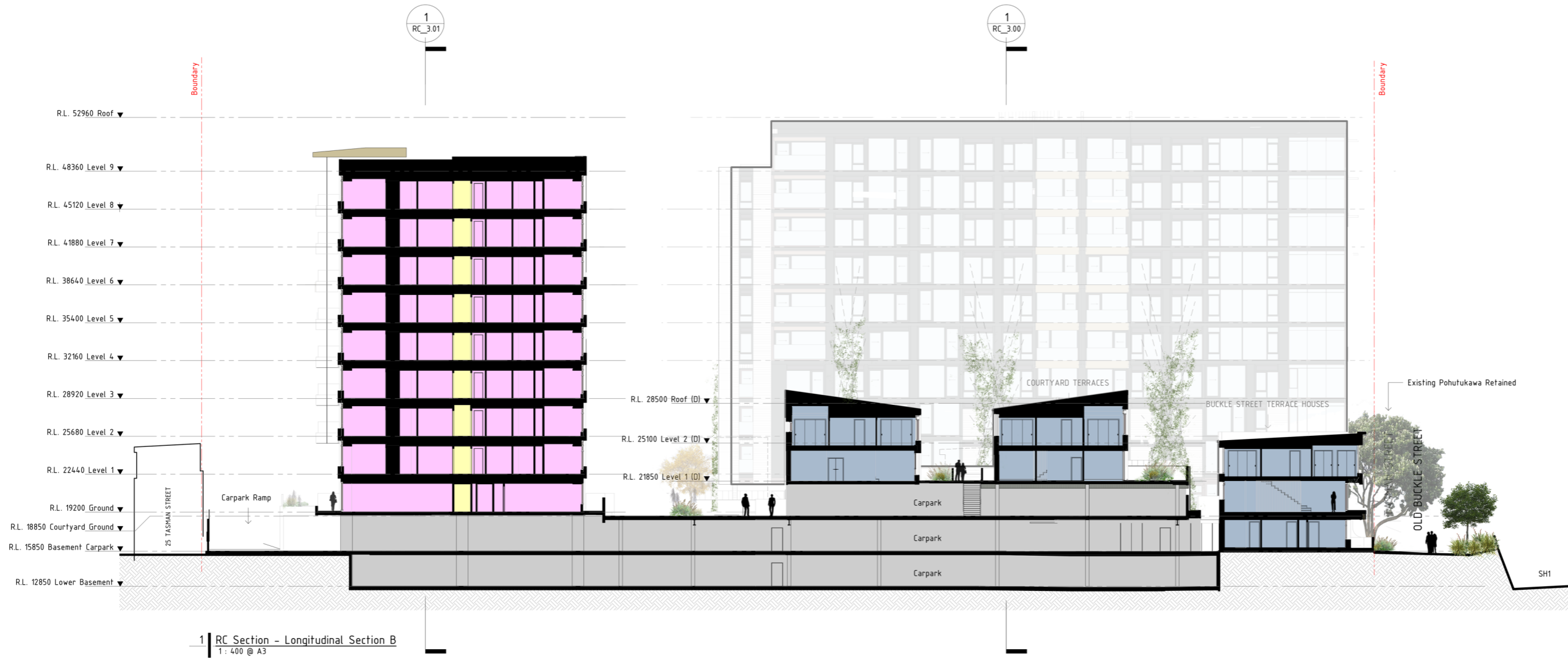
KEY:

STRUCTURAL ENGINEER:
Dunning Thornton Consultants

SERVICES ENGINEER:
AURECON GROUP

FIRE ENGINEER:
Holmes Fire

No.	Description	Date
01	Resource Consent	30.09.21
02	RC Updates	20.10.22
03	Resource Consent	13.01.23



One Tasman Pukeahu Park 20-42
Wellington

Proposed Section

1: 400 @ A3

RC_3.03-