

STRUCTURAL ENGINEER:
Dunning Thornton Consultants

SERVICES ENGINEER:
AURECON GROUP

FIRE ENGINEER:
Holmes Fire

No.	Description	Date
01	Resource Consent	30.09.21
02	RC Updates	20.10.22
03	Resource Consent	13.01.23

- A** **Flush Glazed Aluminium Framed Shopfront**
Glazed pivot and sliding doors
Large format operable door
Integrated louvres for tenancy fresh air supply
- B** **Brick / Masonry**
- C** **Metal Cladding**
Vertical format metal cassette panel
Profiled metal sheet
- D** **Aluminium Window Suite**
Integrated spandrels, sliders, sashes and louvres

- E** **Expressed Spandrel**
Aluminium panel with white powdercoat finish,
White extruded fibre reinforced panel (Fibre C
(or Sim)
Precast concrete spandrel,
Modified cementitious plaster render system
(Sto or Sim)
- F** **Glass Balustrade**
PC aluminium stanchions
- G** **Solid Balustrade**
Folded metal plate with powdercoat finish

- H** **Planter**
Stainless steel support wires for climbing plants
- I** **Concrete / Masonry Wall**
Paint finish
- J** **Exterior Sunshade / Louvre**
Metal profile with powdercoat finish
- K** **Terrace Balustrade**
Precast concrete panel with textured surface
Sintered stone formatting panel
Masonry

- L** **Spandrel Panel**
Sintered stone,
Long format porcelain panel
Glazed terracotta. GRC or sim.
- M** **Canopy**
Glazed pedestrian canopy with supporting
structure.
- N** **Balcony Outrigger Support**
- O** **GRC Facade Panels**
Horizontal plank format.



One Tasman Pukeahu Park 20-42
Wellington

Proposed North Elevation

1: 400 @ A3

RC_2.00-

NOTES:



STRUCTURAL ENGINEER:
Dunning Thornton Consultants

SERVICES ENGINEER:
AURECON GROUP

FIRE ENGINEER:
Holmes Fire

No.	Description	Date
01	Resource Consent	30.09.21
02	RC Updates	20.10.22
03	Resource Consent	13.01.23

- A** **Flush Glazed Aluminium Framed Shopfront**
Glazed pivot and sliding doors
Large format operable door
Integrated louvres for tenancy fresh air supply
- B** **Brick / Masonry**
- C** **Metal Cladding**
Vertical format metal cassette panel
Profiled metal sheet
- D** **Aluminium Window Suite**
Integrated spandrels, sliders, sashes and louvres

- E** **Expressed Spandrel**
Aluminium panel with white powdercoat finish,
White extruded fibre reinforced panel (Fibre C
(or Sim)
Precast concrete spandrel,
Modified cementitious plaster render system
(Sto or Sim)
- F** **Glass Balustrade**
PC aluminium stanchions
- G** **Solid Balustrade**
Folded metal plate with powdercoat finish

- H** **Planter**
Stainless steel support wires for climbing plants
- I** **Concrete / Masonry Wall**
Paint finish
- J** **Exterior Sunshade / Louvre**
Metal profile with powdercoat finish
- K** **Terrace Balustrade**
Precast concrete panel with textured surface
Sintered stone formatting panel
Masonry

- L** **Spandrel Panel**
Sintered stone,
Long format porcelain panel
Glazed terracotta. GRC or sim.
- M** **Canopy**
Glazed pedestrian canopy with supporting
structure.
- N** **Balcony Outrigger Support**
- O** **GRC Facade Panels**
Horizontal plank format.



One Tasman Pukeahu Park 20-42
Wellington

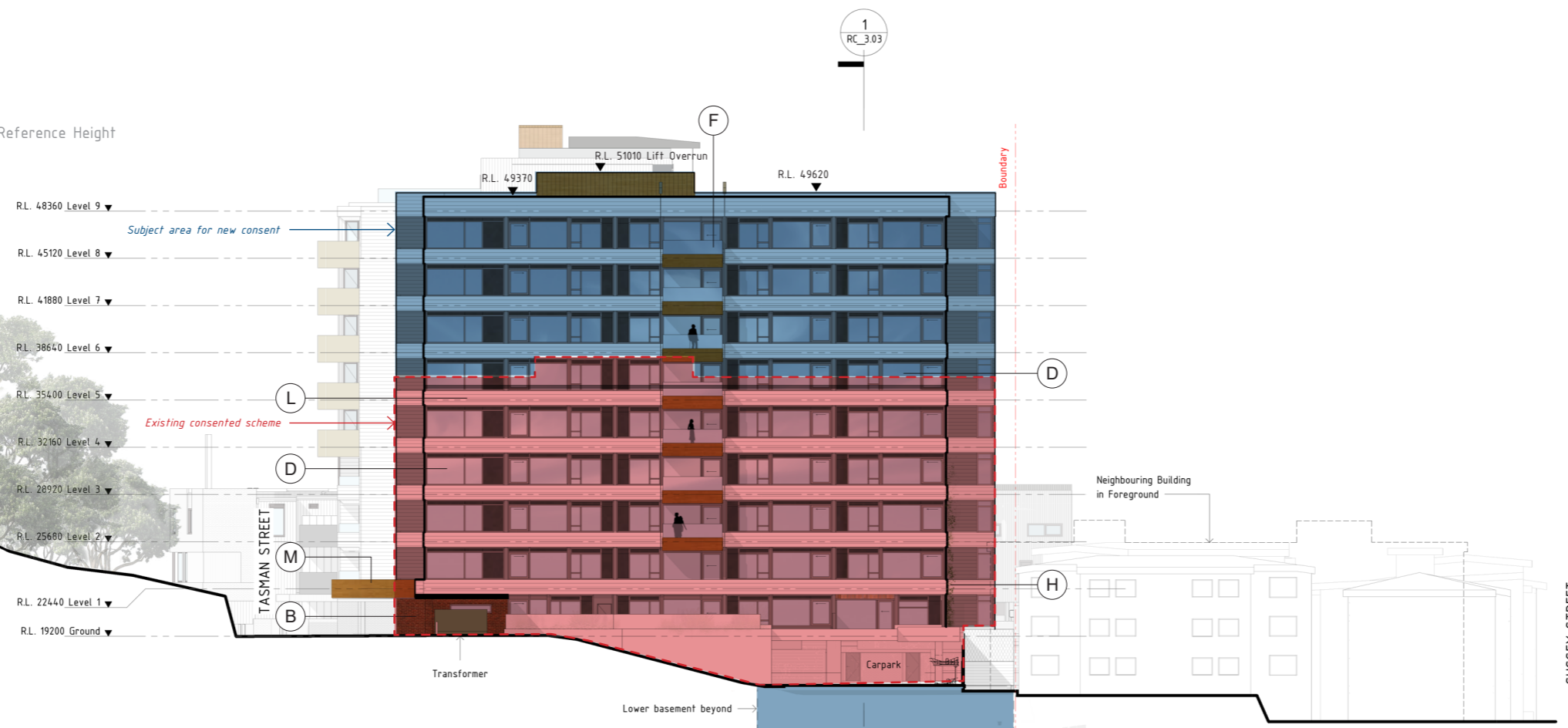
Proposed East Elevation

1:400 @ A3

RC_2.01-

Carillon Tower Reference Height

Former Dominion Museum Building Reference Height



1 RC South Elevation
1:400 @ A3

KEY:

	Existing Consent
	Subject Consent

STRUCTURAL ENGINEER:
Dunning Thornton Consultants

SERVICES ENGINEER:
AURECON GROUP

FIRE ENGINEER:
Holmes Fire

No.	Description	Date
01	Resource Consent	30.09.21
02	RC Updates	20.10.22
03	Resource Consent	13.01.23

- A** **Flush Glazed Aluminium Framed Shopfront**
Glazed pivot and sliding doors
Large format operable door
Integrated louvres for tenancy fresh air supply
- B** **Brick / Masonry**
- C** **Metal Cladding**
Vertical format metal cassette panel
Profiled metal sheet
- D** **Aluminium Window Suite**
Integrated spandrels, sliders, sashes and louvres

- E** **Expressed Spandrel**
Aluminium panel with white powdercoat finish,
White extruded fibre reinforced panel (Fibre C
(or Sim)
Precast concrete spandrel,
Modified cementitious plaster render system
(Sto or Sim)
- F** **Glass Balustrade**
PC aluminium stanchions
- G** **Solid Balustrade**
Folded metal plate with powdercoat finish

- H** **Planter**
Stainless steel support wires for climbing plants
- I** **Concrete / Masonry Wall**
Paint finish
- J** **Exterior Sunshade / Louvre**
Metal profile with powdercoat finish
- K** **Terrace Balustrade**
Precast concrete panel with textured surface
Sintered stone formatting panel
Masonry

- L** **Spandrel Panel**
Sintered stone,
Long format porcelain panel
Glazed terracotta. GRC or sim.
- M** **Canopy**
Glazed pedestrian canopy with supporting
structure.
- N** **Balcony Outrigger Support**
- O** **GRC Facade Panels**
Horizontal plank format.



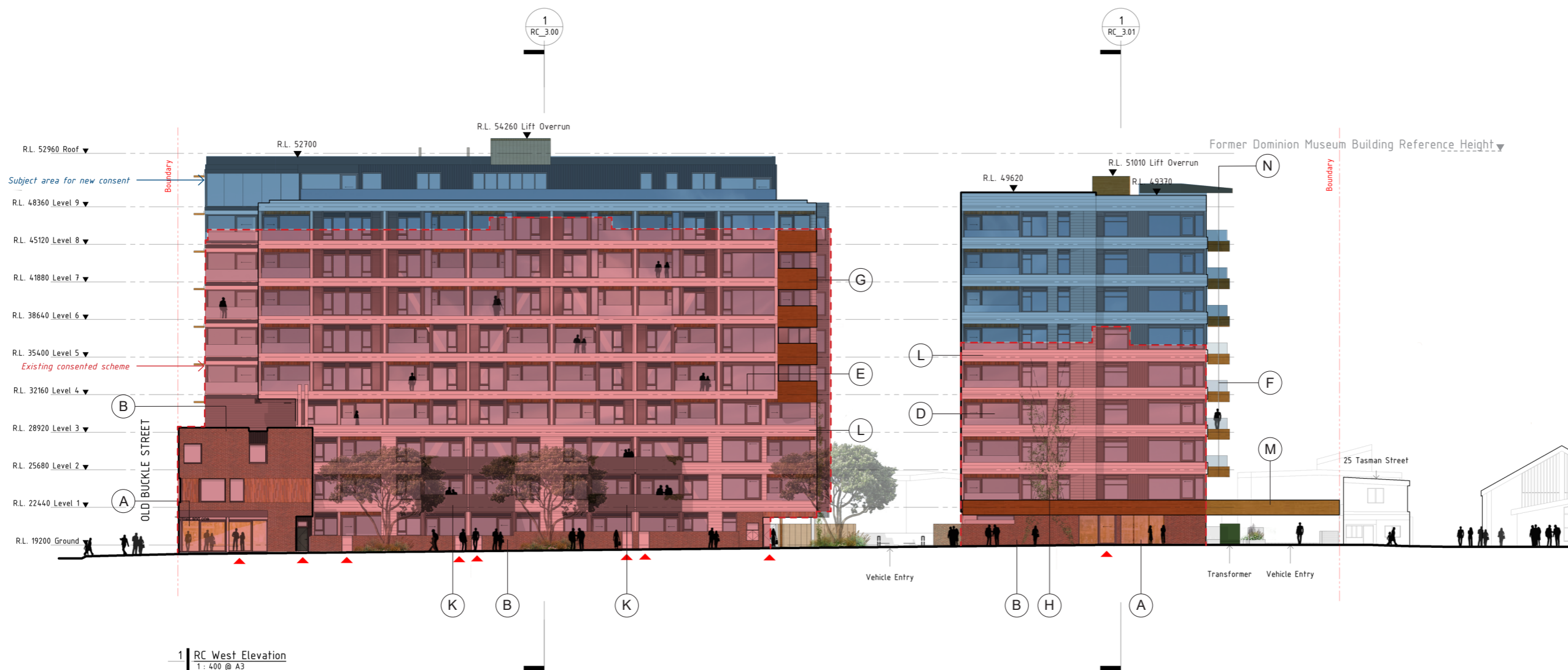
One Tasman Pukeahu Park 20-42
Wellington

Proposed South Elevation

1:400 @ A3

RC_2.02-

NOTES:



STRUCTURAL ENGINEER:
Dunning Thornton Consultants

SERVICES ENGINEER:
AURECON GROUP

FIRE ENGINEER:
Holmes Fire

No.	Description	Date
01	Resource Consent	30.09.21
02	RC Updates	20.10.22
03	Resource Consent	13.01.23

- A** **Flush Glazed Aluminium Framed Shopfront**
Glazed pivot and sliding doors
Large format operable door
Integrated louvres for tenancy fresh air supply
- B** **Brick / Masonry**
- C** **Metal Cladding**
Vertical format metal cassette panel
Profiled metal sheet
- D** **Aluminium Window Suite**
Integrated spandrels, sliders, sashes and louvres

- E** **Expressed Spandrel**
Aluminium panel with white powdercoat finish,
White extruded fibre reinforced panel (Fibre C
(or Sim)
Precast concrete spandrel,
Modified cementitious plaster render system
(Sto or Sim)
- F** **Glass Balustrade**
PC aluminium stanchions
- G** **Solid Balustrade**
Folded metal plate with powdercoat finish

- H** **Planter**
Stainless steel support wires for climbing plants
- I** **Concrete / Masonry Wall**
Paint finish
- J** **Exterior Sunshade / Louvre**
Metal profile with powdercoat finish
- K** **Terrace Balustrade**
Precast concrete panel with textured surface
Sintered stone formatting panel
Masonry

- L** **Spandrel Panel**
Sintered stone,
Long format porcelain panel
Glazed terracotta. GRC or sim.
- M** **Canopy**
Glazed pedestrian canopy with supporting
structure.
- N** **Balcony Outrigger Support**
- O** **GRC Facade Panels**
Horizontal plank format.



One Tasman Pukeahu Park 20-42
Wellington

Proposed West Elevation

1: 400 @ A3

RC_2.03-

NOTES:

- Apartments
- Townhouses
- Cafe
- Apartment Amenities
- Circulation
- Lifts
- Stairwell
- Services
- Covered Parking

- KEY:
- Existing Consent
 - Subject Consent

STRUCTURAL ENGINEER:
Dunning Thornton Consultants

SERVICES ENGINEER:
AURECON GROUP

FIRE ENGINEER:
Holmes Fire

No.	Description	Date
01	Resource Consent	30.09.21
02	RC Updates	20.10.22
03	Resource Consent	13.01.23



One Tasman Pukeahu Park 20-42
Wellington

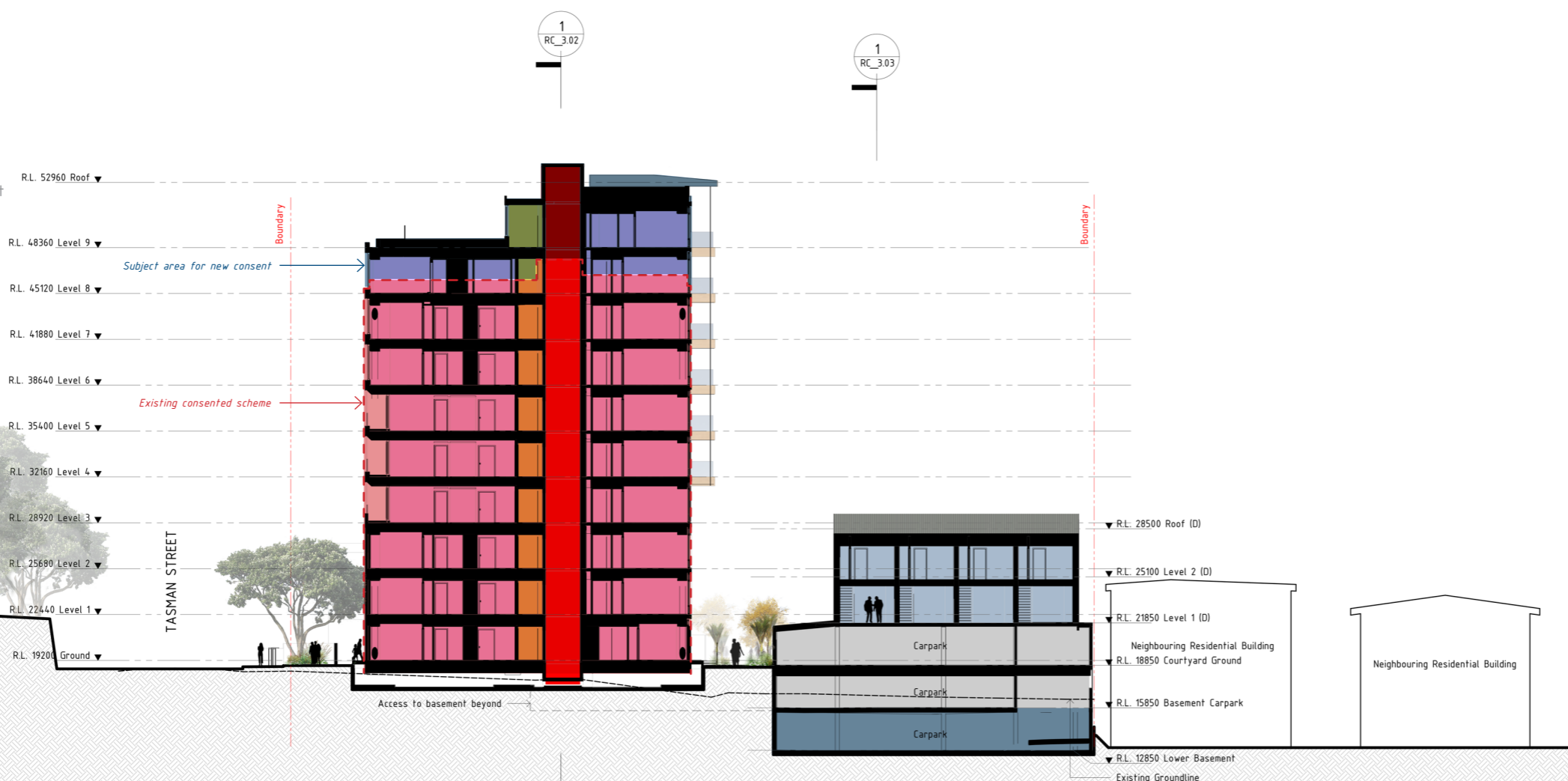
Proposed Section

1 : 400 @ A3

RC_3.00-

▼ Carillon Tower Reference Height

▼ Former Dominion Museum Building Reference Height



1 RC Section - North Apartments
1 : 400 @ A3

NOTES:

- Apartments
- Townhouses
- Cafe
- Apartment Amenities
- Circulation
- Lifts
- Stairwell
- Services
- Covered Parking

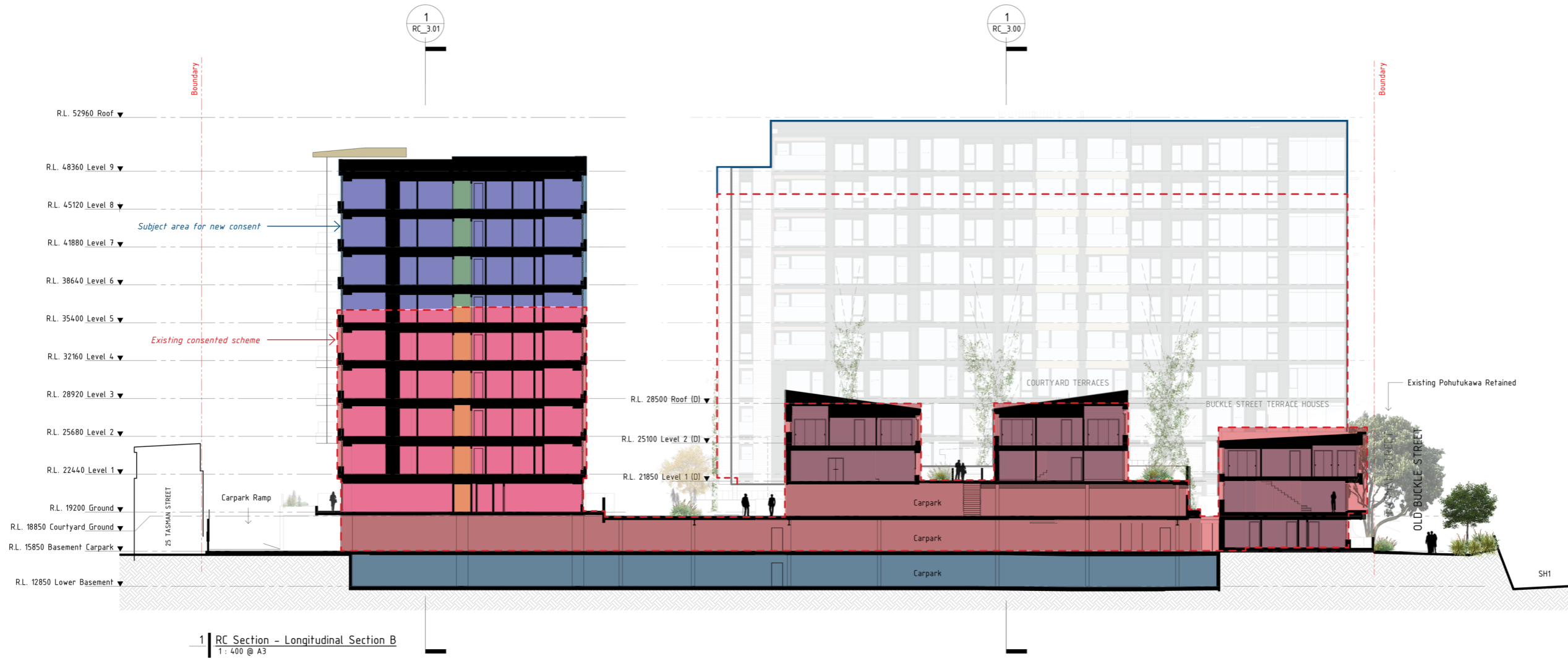
KEY:

STRUCTURAL ENGINEER:
Dunning Thornton Consultants

SERVICES ENGINEER:
AURECON GROUP

FIRE ENGINEER:
Holmes Fire

No.	Description	Date
01	Resource Consent	30.09.21
02	RC Updates	20.10.22
03	Resource Consent	13.01.23



One Tasman Pukeahu Park 20-42
Wellington

Proposed Section

1: 400 @ A3

RC_3.03-