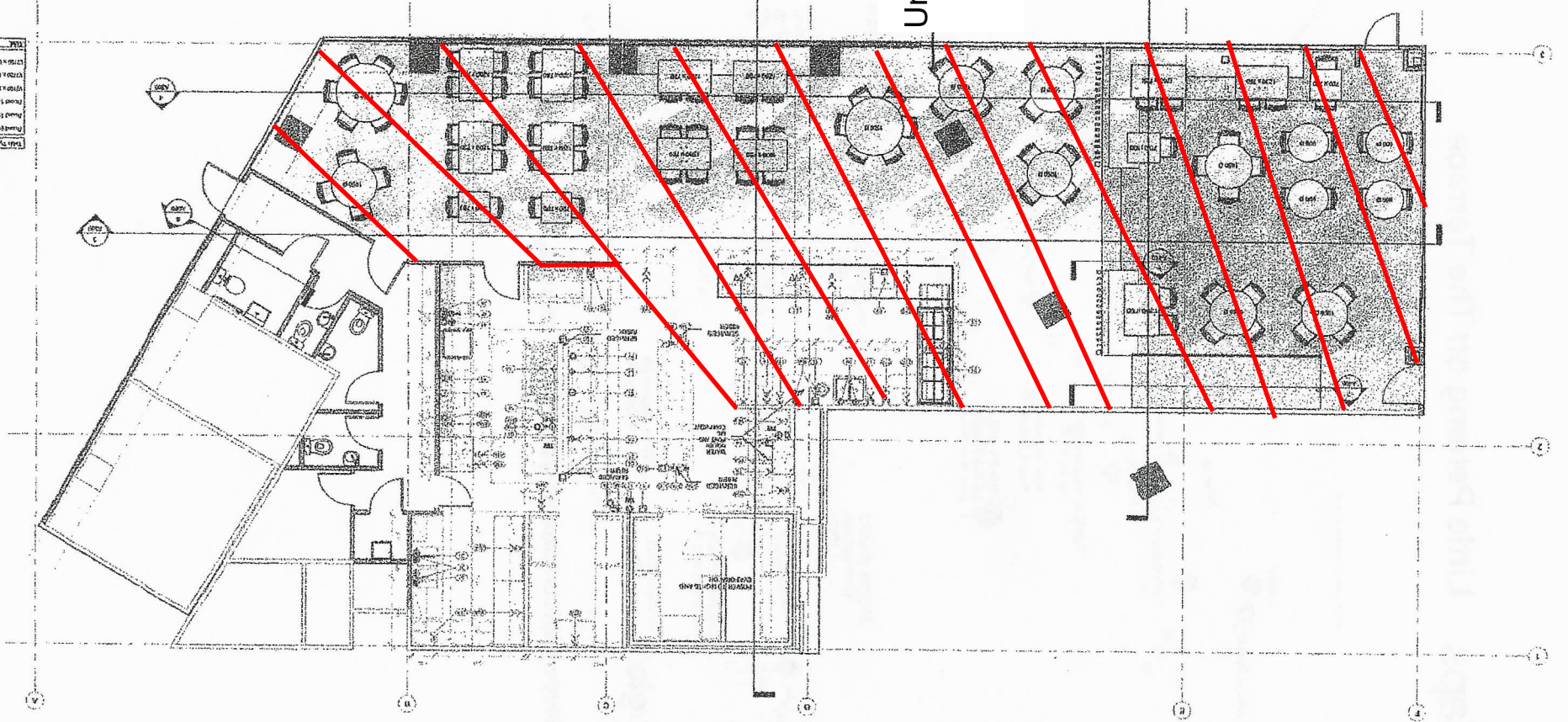


BUILDING CONSENT
 1. BUILDING CONSENT
 2. BUILDING CONSENT
 3. BUILDING CONSENT
 4. BUILDING CONSENT
 5. BUILDING CONSENT
 6. BUILDING CONSENT
 7. BUILDING CONSENT
 8. BUILDING CONSENT
 9. BUILDING CONSENT
 10. BUILDING CONSENT
 11. BUILDING CONSENT
 12. BUILDING CONSENT
 13. BUILDING CONSENT
 14. BUILDING CONSENT
 15. BUILDING CONSENT
 16. BUILDING CONSENT
 17. BUILDING CONSENT
 18. BUILDING CONSENT
 19. BUILDING CONSENT
 20. BUILDING CONSENT
 21. BUILDING CONSENT
 22. BUILDING CONSENT
 23. BUILDING CONSENT
 24. BUILDING CONSENT
 25. BUILDING CONSENT
 26. BUILDING CONSENT
 27. BUILDING CONSENT
 28. BUILDING CONSENT
 29. BUILDING CONSENT
 30. BUILDING CONSENT
 31. BUILDING CONSENT
 32. BUILDING CONSENT
 33. BUILDING CONSENT
 34. BUILDING CONSENT
 35. BUILDING CONSENT
 36. BUILDING CONSENT
 37. BUILDING CONSENT
 38. BUILDING CONSENT
 39. BUILDING CONSENT
 40. BUILDING CONSENT
 41. BUILDING CONSENT
 42. BUILDING CONSENT
 43. BUILDING CONSENT
 44. BUILDING CONSENT
 45. BUILDING CONSENT
 46. BUILDING CONSENT
 47. BUILDING CONSENT
 48. BUILDING CONSENT
 49. BUILDING CONSENT
 50. BUILDING CONSENT
 51. BUILDING CONSENT
 52. BUILDING CONSENT
 53. BUILDING CONSENT
 54. BUILDING CONSENT
 55. BUILDING CONSENT
 56. BUILDING CONSENT
 57. BUILDING CONSENT
 58. BUILDING CONSENT
 59. BUILDING CONSENT
 60. BUILDING CONSENT
 61. BUILDING CONSENT
 62. BUILDING CONSENT
 63. BUILDING CONSENT
 64. BUILDING CONSENT
 65. BUILDING CONSENT
 66. BUILDING CONSENT
 67. BUILDING CONSENT
 68. BUILDING CONSENT
 69. BUILDING CONSENT
 70. BUILDING CONSENT
 71. BUILDING CONSENT
 72. BUILDING CONSENT
 73. BUILDING CONSENT
 74. BUILDING CONSENT
 75. BUILDING CONSENT
 76. BUILDING CONSENT
 77. BUILDING CONSENT
 78. BUILDING CONSENT
 79. BUILDING CONSENT
 80. BUILDING CONSENT
 81. BUILDING CONSENT
 82. BUILDING CONSENT
 83. BUILDING CONSENT
 84. BUILDING CONSENT
 85. BUILDING CONSENT
 86. BUILDING CONSENT
 87. BUILDING CONSENT
 88. BUILDING CONSENT
 89. BUILDING CONSENT
 90. BUILDING CONSENT
 91. BUILDING CONSENT
 92. BUILDING CONSENT
 93. BUILDING CONSENT
 94. BUILDING CONSENT
 95. BUILDING CONSENT
 96. BUILDING CONSENT
 97. BUILDING CONSENT
 98. BUILDING CONSENT
 99. BUILDING CONSENT
 100. BUILDING CONSENT

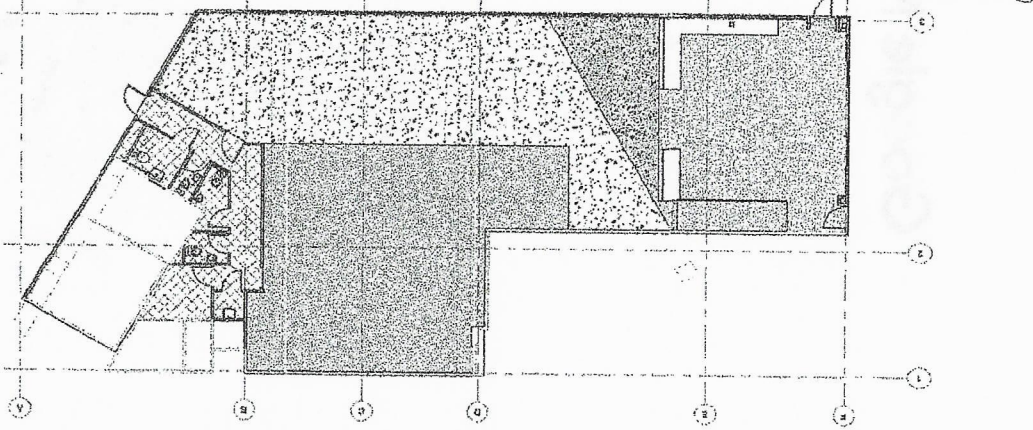
Undesignated

Ground Floor Building Layout

Room No.	Room Name	Area (sqm)	Volume (cu m)
1	REAR OFFICE	100.0	1000.0
2	FRONT OFFICE	100.0	1000.0
3	REAR OFFICE	100.0	1000.0
4	FRONT OFFICE	100.0	1000.0
5	REAR OFFICE	100.0	1000.0
6	FRONT OFFICE	100.0	1000.0
7	REAR OFFICE	100.0	1000.0
8	FRONT OFFICE	100.0	1000.0
9	REAR OFFICE	100.0	1000.0
10	FRONT OFFICE	100.0	1000.0
11	REAR OFFICE	100.0	1000.0
12	FRONT OFFICE	100.0	1000.0
13	REAR OFFICE	100.0	1000.0
14	FRONT OFFICE	100.0	1000.0
15	REAR OFFICE	100.0	1000.0
16	FRONT OFFICE	100.0	1000.0
17	REAR OFFICE	100.0	1000.0
18	FRONT OFFICE	100.0	1000.0
19	REAR OFFICE	100.0	1000.0
20	FRONT OFFICE	100.0	1000.0
21	REAR OFFICE	100.0	1000.0
22	FRONT OFFICE	100.0	1000.0
23	REAR OFFICE	100.0	1000.0
24	FRONT OFFICE	100.0	1000.0
25	REAR OFFICE	100.0	1000.0
26	FRONT OFFICE	100.0	1000.0
27	REAR OFFICE	100.0	1000.0
28	FRONT OFFICE	100.0	1000.0
29	REAR OFFICE	100.0	1000.0
30	FRONT OFFICE	100.0	1000.0
31	REAR OFFICE	100.0	1000.0
32	FRONT OFFICE	100.0	1000.0
33	REAR OFFICE	100.0	1000.0
34	FRONT OFFICE	100.0	1000.0
35	REAR OFFICE	100.0	1000.0
36	FRONT OFFICE	100.0	1000.0
37	REAR OFFICE	100.0	1000.0
38	FRONT OFFICE	100.0	1000.0
39	REAR OFFICE	100.0	1000.0
40	FRONT OFFICE	100.0	1000.0
41	REAR OFFICE	100.0	1000.0
42	FRONT OFFICE	100.0	1000.0
43	REAR OFFICE	100.0	1000.0
44	FRONT OFFICE	100.0	1000.0
45	REAR OFFICE	100.0	1000.0
46	FRONT OFFICE	100.0	1000.0
47	REAR OFFICE	100.0	1000.0
48	FRONT OFFICE	100.0	1000.0
49	REAR OFFICE	100.0	1000.0
50	FRONT OFFICE	100.0	1000.0
51	REAR OFFICE	100.0	1000.0
52	FRONT OFFICE	100.0	1000.0
53	REAR OFFICE	100.0	1000.0
54	FRONT OFFICE	100.0	1000.0
55	REAR OFFICE	100.0	1000.0
56	FRONT OFFICE	100.0	1000.0
57	REAR OFFICE	100.0	1000.0
58	FRONT OFFICE	100.0	1000.0
59	REAR OFFICE	100.0	1000.0
60	FRONT OFFICE	100.0	1000.0
61	REAR OFFICE	100.0	1000.0
62	FRONT OFFICE	100.0	1000.0
63	REAR OFFICE	100.0	1000.0
64	FRONT OFFICE	100.0	1000.0
65	REAR OFFICE	100.0	1000.0
66	FRONT OFFICE	100.0	1000.0
67	REAR OFFICE	100.0	1000.0
68	FRONT OFFICE	100.0	1000.0
69	REAR OFFICE	100.0	1000.0
70	FRONT OFFICE	100.0	1000.0
71	REAR OFFICE	100.0	1000.0
72	FRONT OFFICE	100.0	1000.0
73	REAR OFFICE	100.0	1000.0
74	FRONT OFFICE	100.0	1000.0
75	REAR OFFICE	100.0	1000.0
76	FRONT OFFICE	100.0	1000.0
77	REAR OFFICE	100.0	1000.0
78	FRONT OFFICE	100.0	1000.0
79	REAR OFFICE	100.0	1000.0
80	FRONT OFFICE	100.0	1000.0
81	REAR OFFICE	100.0	1000.0
82	FRONT OFFICE	100.0	1000.0
83	REAR OFFICE	100.0	1000.0
84	FRONT OFFICE	100.0	1000.0
85	REAR OFFICE	100.0	1000.0
86	FRONT OFFICE	100.0	1000.0
87	REAR OFFICE	100.0	1000.0
88	FRONT OFFICE	100.0	1000.0
89	REAR OFFICE	100.0	1000.0
90	FRONT OFFICE	100.0	1000.0
91	REAR OFFICE	100.0	1000.0
92	FRONT OFFICE	100.0	1000.0
93	REAR OFFICE	100.0	1000.0
94	FRONT OFFICE	100.0	1000.0
95	REAR OFFICE	100.0	1000.0
96	FRONT OFFICE	100.0	1000.0
97	REAR OFFICE	100.0	1000.0
98	FRONT OFFICE	100.0	1000.0
99	REAR OFFICE	100.0	1000.0
100	FRONT OFFICE	100.0	1000.0



Ground Floor Finishes



LEGEND

- Wash
- Fast Concrete - ground & polished
- Polishing Concrete - polished
- Tile
- Resistant by SH

Wellington City Council Received:
 26/03/23