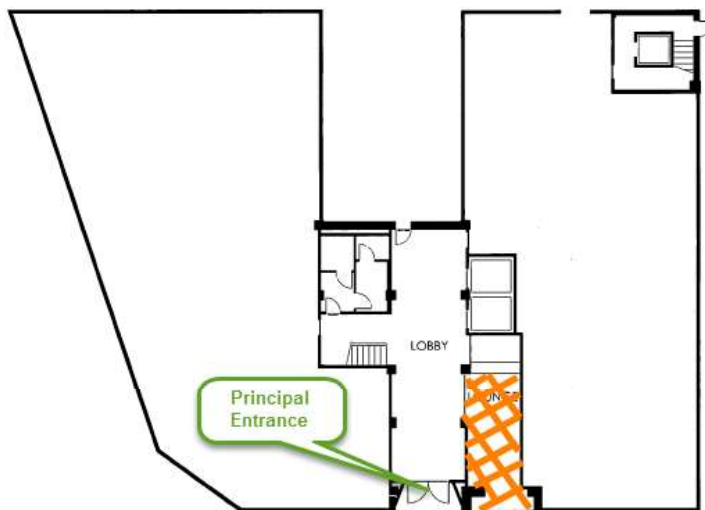


# EMERGENCY ESCAPE PLAN



GROUND FLOOR

IN CASE OF FIRE:

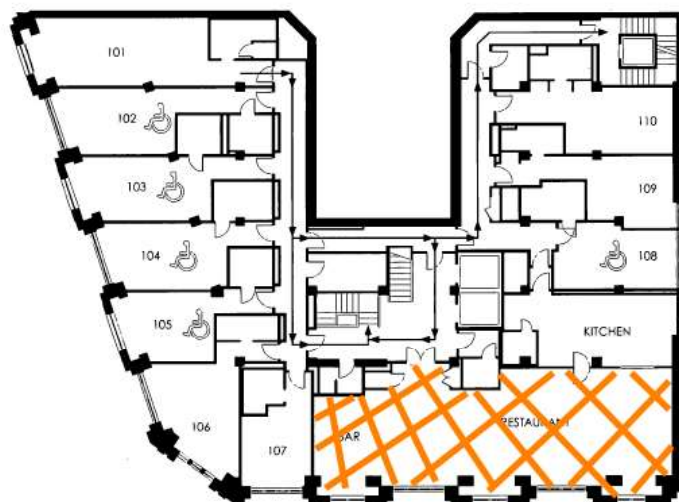
- Call "Emergency" and proceed to the nearest Fire Exit
- Do not use lifts
- Proceed to the assembly point by the Grey Street fountain

○ You are here

→ To Emergency Staircase

▲ Fire Alarm

# EMERGENCY ESCAPE PLAN



LEVEL 1

IN CASE OF FIRE:

- Call "Emergency" and proceed to the nearest Fire Exit
- Do not use lifts
- Proceed to the assembly point by the Grey Street fountain

○ You are here

→ To Emergency Staircase

▲ Fire Alarm

The principal entrance is located on the Grey Street side of the building, physical address: 203 Lambton Quay, Wellington Central

Typical level plan 2-7 Level 3

**Wellington City  
Council received:  
22/03/2022**

# EMERGENCY ESCAPE PLAN



LEVEL 3

IN CASE OF FIRE:

- Call "Emergency" and proceed to the nearest Fire Exit
- Do not use lifts
- Proceed to the assembly point by the Grey Street fountain

● You are here

← To Emergency Staircase

▲ Fire Alarm