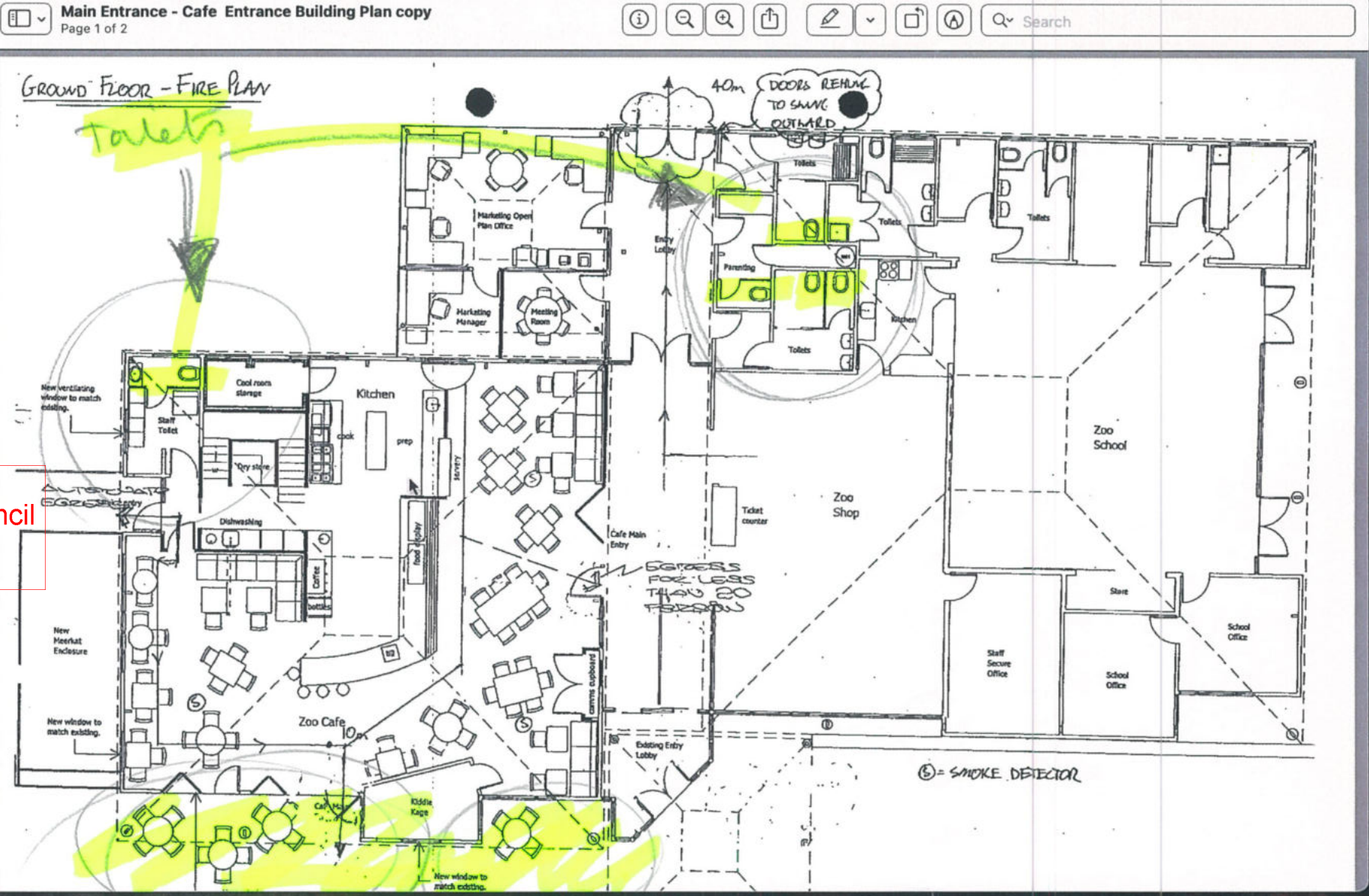


Received Wellington City Council 21/04/2022

14m x 3m
outdoor seating

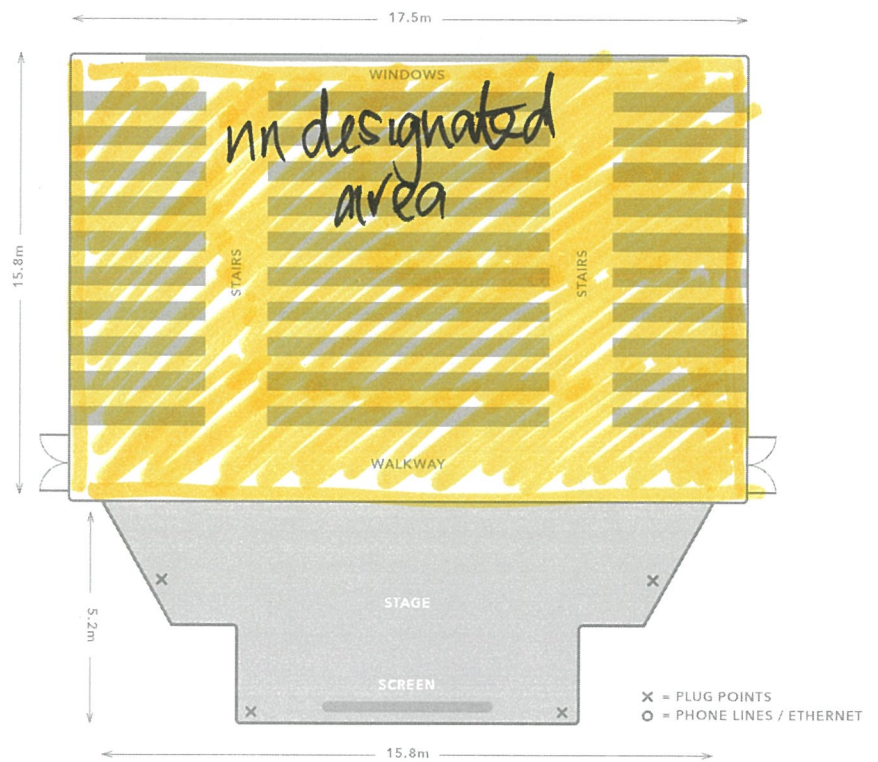


THE WILD THEATRE

17.5 x 15.8

Our theatre is available for presentations and hosting large meetings. Prominent large venue in the centre of the zoo, a short walk away from B&W ruffed lemurs.

**Received
 Wellington City
 Council
 04/05/2022**



Configuration / Capacity

Theatre
 300 people

Facilities

- Natural Lighting**
Windows
- Lighting**
Standard
- Climate Control**
No, natural

Power supplies

- Tables**
On request, limited to stage
- Chairs**
Fixed teared-step seating

Access

- Disabled access**

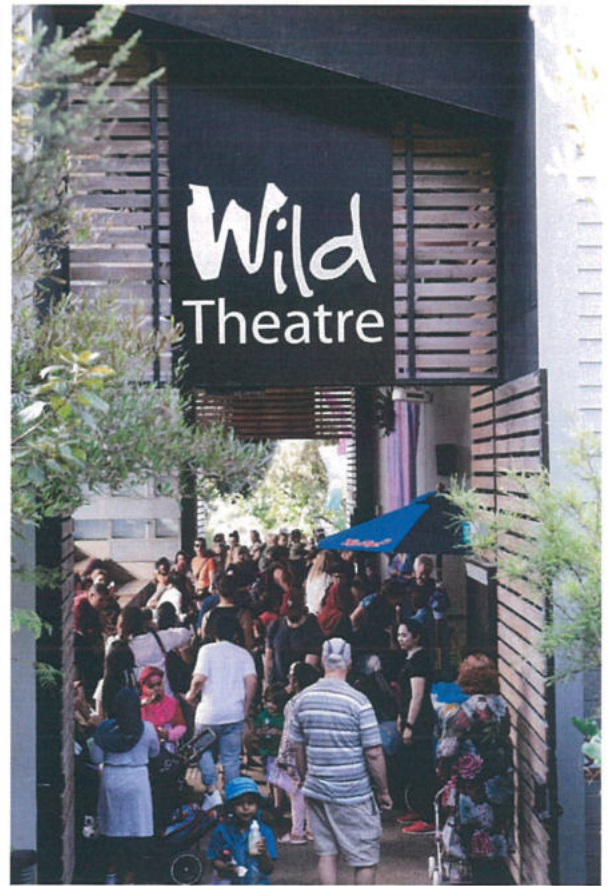
Technology

- Wifi**
- Presentation Equipment**
Projector and screen

Size

- Dimensions**
17.5m x 15.8m
- Ceiling Height** (at lowest point)
3.6m

Please note that all configuration capacities are provided as a guideline only. They are based on the maximum use of the venue space available. The supply of entertainment and/or catering equipment for your event may reduce the space available. Please contact us to discuss your event details with our Venues team who will help you maximise the space within your chosen venue.



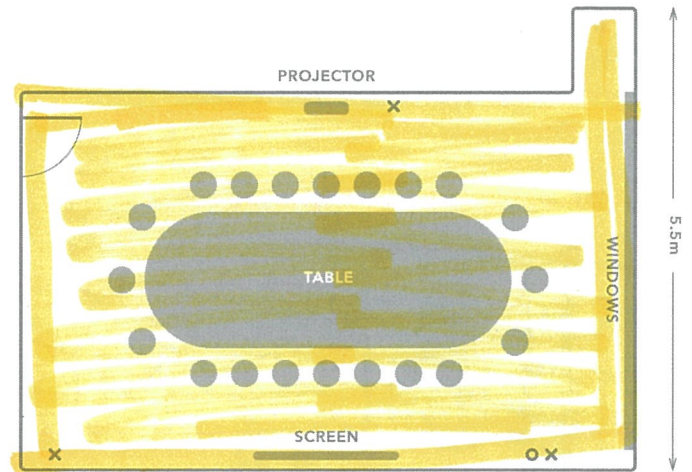
THE NEST TE KŌHANGA BOARDROOM

9 x 5.5m

*enclosed area
undersignated*

Perfect for small meetings, your attendees will love the stunning views from the heart of the Zoo at our Zoo hospital The Nest Te Kōhanga.

Received Wellington City Council 04/05/2022



Configuration / Capacity

Boardroom
20 people

Access

No disable access

Facilities

Natural Lighting
Windows

Lighting
Standard

Climate Control
Heatpump and aircon

Power supplies

Presentation Equipment
Projector and flipchart

Tables
Fixed boardroom table

Chairs
20

Technology

Telephone Connection

Wifi

Size

Dimensions
9m x 5.5m

Ceiling Height (at lowest point)
2.5m

Please note that all configuration capacities are provided as a guideline only. They are based on the maximum use of the venue space available. The supply of entertainment and/or catering equipment for your event may reduce the space available. Please contact us to discuss your event details with our Venues team who will help you maximise the space within your chosen venue.



THE ARCHIBALD CENTRE

Nestled next to Monkey Island, you will be captivated watching the Spider Monkeys, Capuchins and birdlife.

**Received
Wellington City
Council
04/05/2022**



Configuration / Capacity

Workshop
40

Theatre
90 people

Cocktail
100 people

Banquet
65 people

Access

Disabled access

Facilities

Natural Lighting
Windows

Lighting
Standard

Climate Control
Heatpump and aircon

Power supplies

Tables
Trestle tables

Chairs
77 (additional on request)

Technology

Wifi

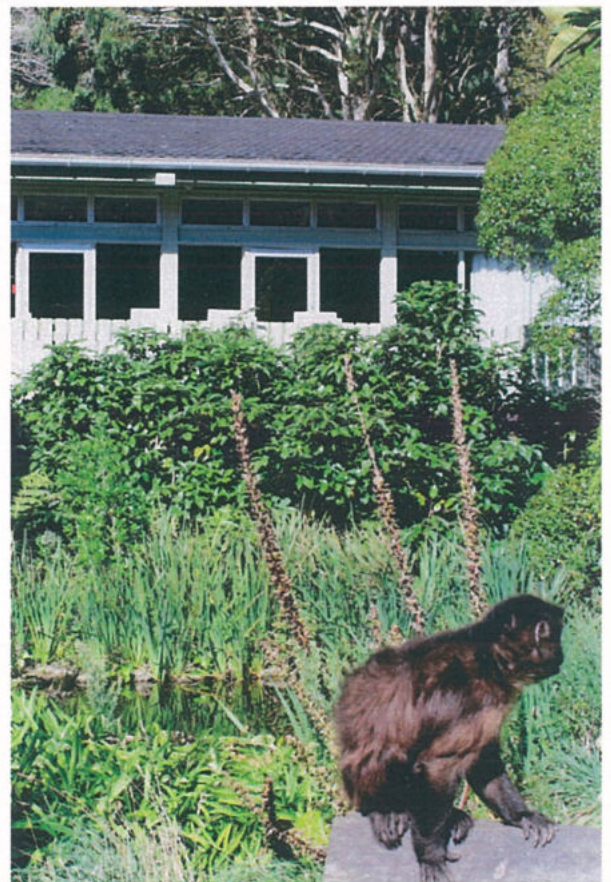
Presentation Equipment
- Projector and screen
- Flipchart and whiteboard

Size

Dimensions
14.9m x 5.9m

Ceiling Height (at lowest point)
2.8m

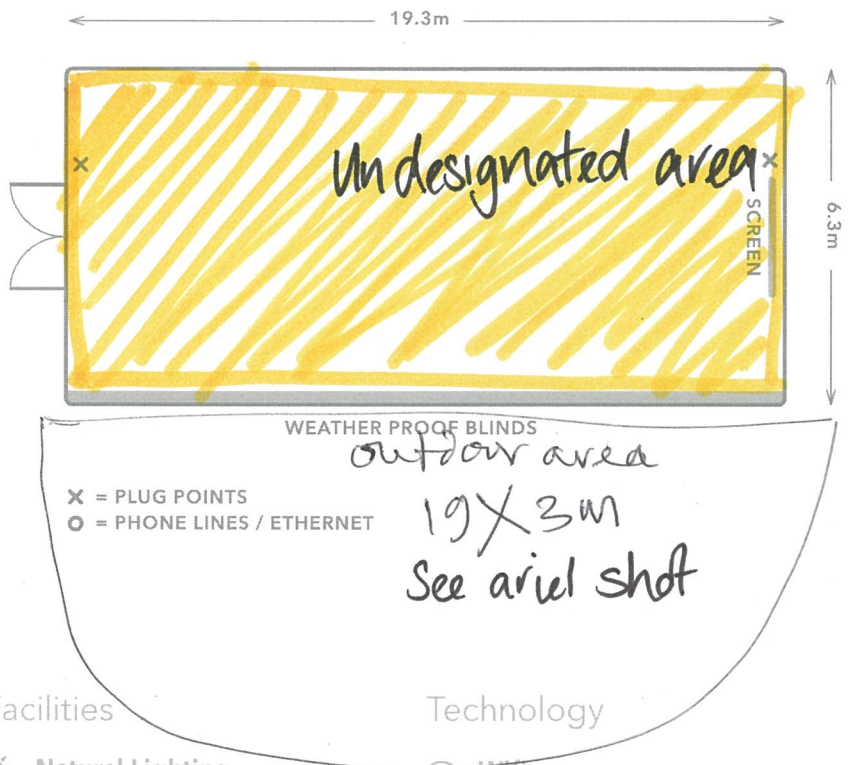
Please note that all configuration capacities are provided as a guideline only. They are based on the maximum use of the venue space available. The supply of entertainment and/or catering equipment for your event may reduce the space available. Please contact us to discuss your event details with our Venues team who will help you maximise the space within your chosen venue.



KAMALAS

Our stunning and architecturally award-winning venue located right in the heart of the Zoo. Perfect for your very special events.

**Received
Wellington City
Council
04/05/2022**



Configuration / Capacity

Workshop
75 people

Theatre
120 people

Cocktail
150 people

Banquet
100 people

Access

Disabled access

Facilities

Natural Lighting
Windows

Lighting
Lights with dimmer control

Climate Control
Underfloor heating optional

Power supplies
3 phase

Tables

Chairs
94 (additional on request)

Technology

Wifi

Presentation Equipment
TV screen

Size

Dimensions
19.3m x 6.3m

Ceiling Height (at highest point)
4.2m

Please note that all configuration capacities are provided as a guideline only. They are based on the maximum use of the venue space available. The supply of entertainment and/or catering equipment for your event may reduce the space available. Please contact us to discuss your event details with our Venues team who will help you maximise the space within your chosen venue.

WELLINGTON

ZOO

VENUES

