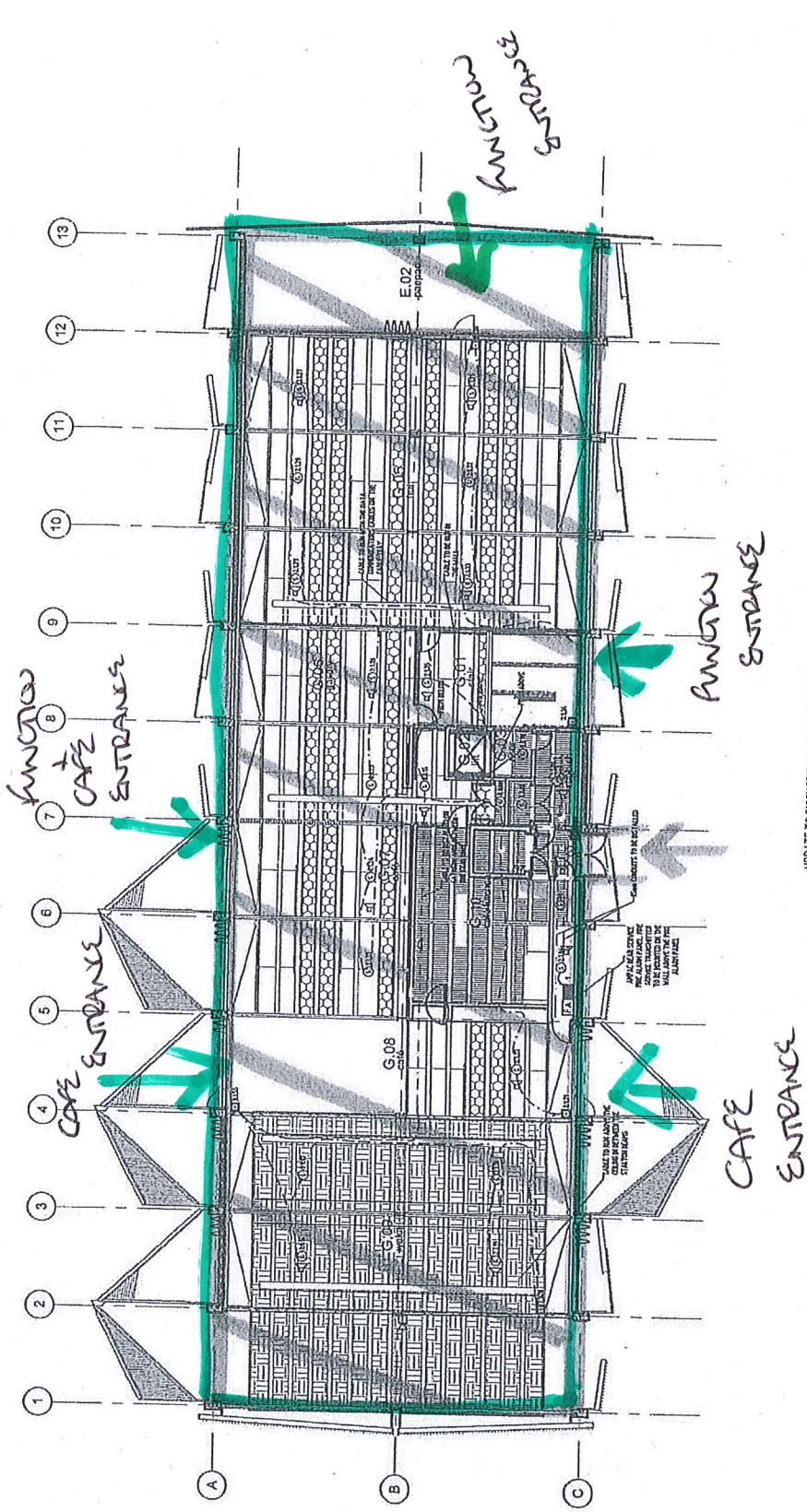


Ground floor



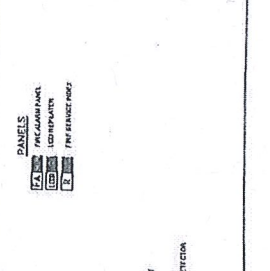
UPDATE TO DISCUSSIONS OF THE 19/09/2010

AQUAHEAT INDUSTRIES LIMITED
 PO Box 310, 232-2379
 10130A, PO Box 310, 232-2379
 TEL: (06) 482 4651 FAX: (06) 232 2379
 DATE: 15/12/2019
 DRAWN: M. WATKINS
 CHECKED: J. DUNN
 SCALE: 1/200
 PROJECT: WHAREWAKE
 CLIENT: WHAREWAKE OPUNAKE CHARITABLE TRUST
 TOWN: OPUNAKE

WHAREWAKE OPUNAKE CHARITABLE TRUST
 TOWN: OPUNAKE
 FIRE PROTECTION
 FIRE ALARM EQUIPMENT LAYOUT
 GROUND FLOOR
 DRAWN: M. WATKINS
 DATE: 15/12/2019
 PROJECT: WHAREWAKE
 CLIENT: WHAREWAKE OPUNAKE CHARITABLE TRUST

- NOTES**
- 1. DESIGNED TO MEET THE REQUIREMENTS OF NZFS 152
 - 2. ALL MANUAL CALL POINTS TO BE MOUNTED 1550
 - 3. ALL MANUAL SUPPLIES TO BE PROVIDED BY OTHERS
 - 4. FIRE ALARM PANEL TO BE MOUNTED AT 1500 AFFL TO THE CENTER FROM THE VIEWING POINT OUTSIDE THE BUILDING.

REV	DATE	DRAWN	DESCRIPTION
1		M. WATKINS	ISSUED FOR CONSTRUCTION
2		J. DUNN	CHECKED FOR APPROVAL
3		J. DUNN	CHECKED FOR APPROVAL
4		J. DUNN	CHECKED FOR APPROVAL
5		J. DUNN	CHECKED FOR APPROVAL

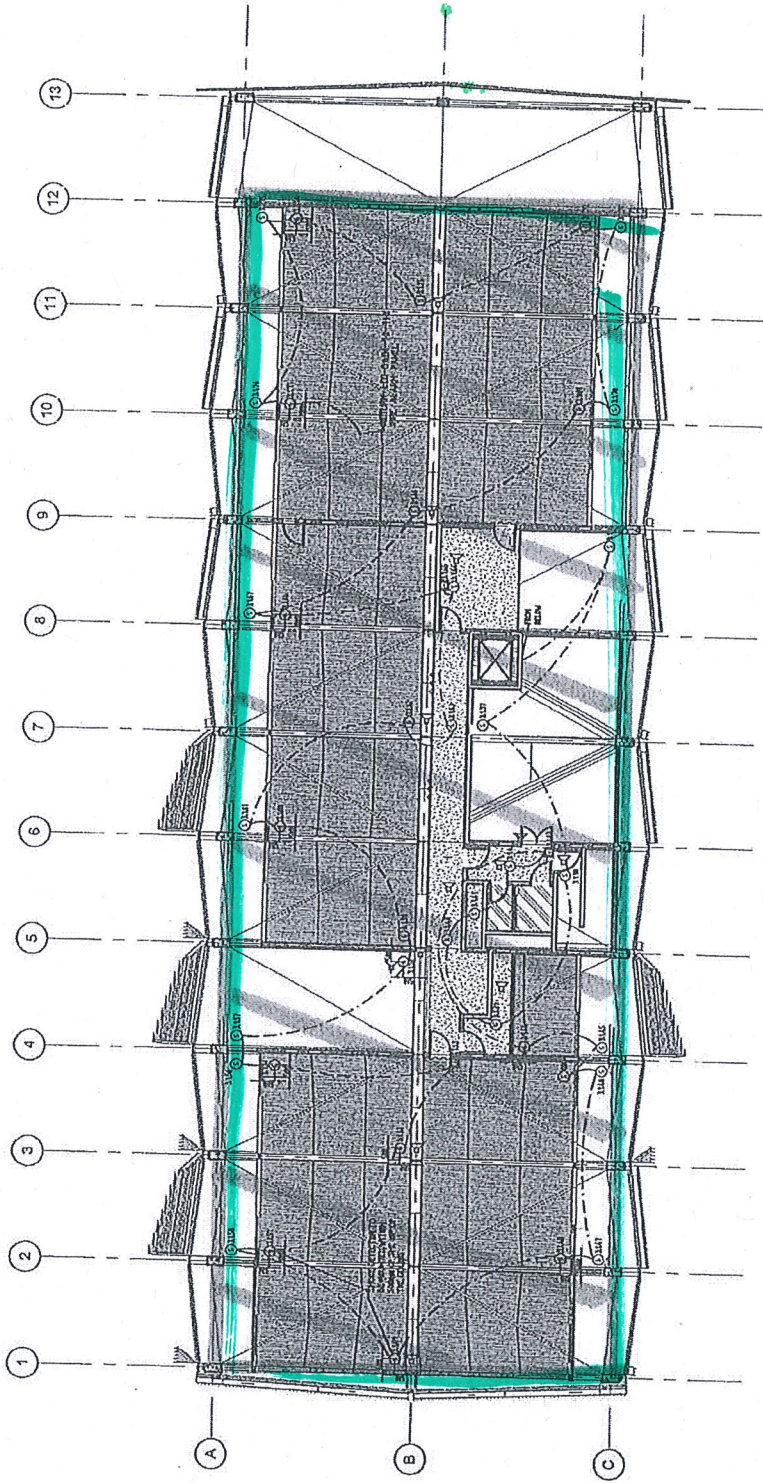


- LEGEND**
- ALARM DEVICES**
- 1: POINT TO POINT WIRELESS DETECTOR
 - 2: POINT TO POINT WIRELESS DETECTOR
 - 3: OPTICAL INDOOR DETECTOR
 - 4: HEAT DETECTOR
 - 5: WIRELESS INDOOR DETECTOR
 - 6: WIRELESS INDOOR DETECTOR
 - 7: WIRELESS INDOOR DETECTOR
 - 8: WIRELESS INDOOR DETECTOR
 - 9: WIRELESS INDOOR DETECTOR
 - 10: WIRELESS INDOOR DETECTOR
 - 11: WIRELESS INDOOR DETECTOR
 - 12: WIRELESS INDOOR DETECTOR
 - 13: WIRELESS INDOOR DETECTOR
 - 14: WIRELESS INDOOR DETECTOR
 - 15: WIRELESS INDOOR DETECTOR
 - 16: WIRELESS INDOOR DETECTOR
 - 17: WIRELESS INDOOR DETECTOR
 - 18: WIRELESS INDOOR DETECTOR
 - 19: WIRELESS INDOOR DETECTOR
 - 20: WIRELESS INDOOR DETECTOR
 - 21: WIRELESS INDOOR DETECTOR
 - 22: WIRELESS INDOOR DETECTOR
 - 23: WIRELESS INDOOR DETECTOR
 - 24: WIRELESS INDOOR DETECTOR
 - 25: WIRELESS INDOOR DETECTOR
 - 26: WIRELESS INDOOR DETECTOR
 - 27: WIRELESS INDOOR DETECTOR
 - 28: WIRELESS INDOOR DETECTOR
 - 29: WIRELESS INDOOR DETECTOR
 - 30: WIRELESS INDOOR DETECTOR
 - 31: WIRELESS INDOOR DETECTOR
 - 32: WIRELESS INDOOR DETECTOR
 - 33: WIRELESS INDOOR DETECTOR
 - 34: WIRELESS INDOOR DETECTOR
 - 35: WIRELESS INDOOR DETECTOR
 - 36: WIRELESS INDOOR DETECTOR
 - 37: WIRELESS INDOOR DETECTOR
 - 38: WIRELESS INDOOR DETECTOR
 - 39: WIRELESS INDOOR DETECTOR
 - 40: WIRELESS INDOOR DETECTOR
 - 41: WIRELESS INDOOR DETECTOR
 - 42: WIRELESS INDOOR DETECTOR
 - 43: WIRELESS INDOOR DETECTOR
 - 44: WIRELESS INDOOR DETECTOR
 - 45: WIRELESS INDOOR DETECTOR
 - 46: WIRELESS INDOOR DETECTOR
 - 47: WIRELESS INDOOR DETECTOR
 - 48: WIRELESS INDOOR DETECTOR
 - 49: WIRELESS INDOOR DETECTOR
 - 50: WIRELESS INDOOR DETECTOR

ALERTING DEVICES

- 1: 12V BATTERY CHARGER
- 2: 12V BATTERY CHARGER
- 3: 12V BATTERY CHARGER
- 4: 12V BATTERY CHARGER
- 5: 12V BATTERY CHARGER
- 6: 12V BATTERY CHARGER
- 7: 12V BATTERY CHARGER
- 8: 12V BATTERY CHARGER
- 9: 12V BATTERY CHARGER
- 10: 12V BATTERY CHARGER
- 11: 12V BATTERY CHARGER
- 12: 12V BATTERY CHARGER
- 13: 12V BATTERY CHARGER
- 14: 12V BATTERY CHARGER
- 15: 12V BATTERY CHARGER
- 16: 12V BATTERY CHARGER
- 17: 12V BATTERY CHARGER
- 18: 12V BATTERY CHARGER
- 19: 12V BATTERY CHARGER
- 20: 12V BATTERY CHARGER
- 21: 12V BATTERY CHARGER
- 22: 12V BATTERY CHARGER
- 23: 12V BATTERY CHARGER
- 24: 12V BATTERY CHARGER
- 25: 12V BATTERY CHARGER
- 26: 12V BATTERY CHARGER
- 27: 12V BATTERY CHARGER
- 28: 12V BATTERY CHARGER
- 29: 12V BATTERY CHARGER
- 30: 12V BATTERY CHARGER
- 31: 12V BATTERY CHARGER
- 32: 12V BATTERY CHARGER
- 33: 12V BATTERY CHARGER
- 34: 12V BATTERY CHARGER
- 35: 12V BATTERY CHARGER
- 36: 12V BATTERY CHARGER
- 37: 12V BATTERY CHARGER
- 38: 12V BATTERY CHARGER
- 39: 12V BATTERY CHARGER
- 40: 12V BATTERY CHARGER
- 41: 12V BATTERY CHARGER
- 42: 12V BATTERY CHARGER
- 43: 12V BATTERY CHARGER
- 44: 12V BATTERY CHARGER
- 45: 12V BATTERY CHARGER
- 46: 12V BATTERY CHARGER
- 47: 12V BATTERY CHARGER
- 48: 12V BATTERY CHARGER
- 49: 12V BATTERY CHARGER
- 50: 12V BATTERY CHARGER

First floor



ALARM DEVICES

- ☉ SHIMSHU SMOKE DETECTOR
- ⊙ OPTICAL INDOOR DETECTOR
- ⊙ HEAT DETECTOR
- ⊙ MULTICENTERS SMOKE DETECTOR
- ⊙ ZONE SIGNAL
- ⊙ OPTICAL BEAM TRANSMITTER
- ⊙ OPTICAL BEAM RECEIVER
- ⊙ SILENT MOUNTED SMOKE DETECTOR
- ⊙ APPEARED SMOKE DETECTOR
- ⊙ MANUAL CALL POINT
- ⊙ 150MMH WALL MOUNTED SMOKE DETECTOR
- ⊙ SMOKE SILENT OUTPUT DEVICE
- ⊙ APPOINTMENT MANUAL CALLING POINT

ALARMING DEVICES

- ⊙ SHIMSHU SMOKE DETECTOR
- ⊙ OPTICAL INDOOR DETECTOR
- ⊙ HEAT DETECTOR
- ⊙ MULTICENTERS SMOKE DETECTOR
- ⊙ ZONE SIGNAL
- ⊙ OPTICAL BEAM TRANSMITTER
- ⊙ OPTICAL BEAM RECEIVER
- ⊙ SILENT MOUNTED SMOKE DETECTOR
- ⊙ APPEARED SMOKE DETECTOR
- ⊙ MANUAL CALL POINT
- ⊙ 150MMH WALL MOUNTED SMOKE DETECTOR
- ⊙ SMOKE SILENT OUTPUT DEVICE
- ⊙ APPOINTMENT MANUAL CALLING POINT

PANELS

- ⊙ FIRE ALARMING
- ⊙ LED INDICATOR
- ⊙ FIRE SERVICE HOSE

NOTES

1. DESIGNED TO MEET THE REQUIREMENTS OF NZ4517
2. ALL MANUAL CALL POINTS TO BE MOUNTED 750mm AFFL
3. DIMENSIONS FOR THE DETECTOR LOCATIONS ARE INDICATED AS THE MAXIMUM SPACING FROM THE HIP
4. CABLE TO BE INSTALLED IN CONDUIT IN AREAS WHERE THERE IS NO CEILING
5. CABLES SHOULD BE SUPPORTED AT 3m FROM THE CEILING
6. SMOKE DETECTORS TO BE MOUNTED AT MAXIMUM 500mm FROM THE HIGH POINTS OF THE CEILING REFER TO DIMENSIONS INDICATED
7. MOUNTING OF SPEAKERS ON THE CEILING PANELS.

REV	DATE	DRAWN	DESCRIPTION
1			
2			
3			
4			
5			
6			
7			
8			
9			
10			
11			
12			
13			

AGUAHEAT INDUSTRIES LIMITED
82-86 MANN ROAD, TAWA, WELLINGTON
PH: (04) 232-5778 FAX: (04) 232-4170

DRAWN	E. VILLAGE	CHECKED	E. VILLAGE
SCALE	1:1	APPROVED	E. VILLAGE
DATE	15/06/2021	DATE	15/06/2021

WHAREHŌ PŌHĀKE CHARITABLE TRUST
TARANAKI WHARF

FIRE PROTECTION
FIRE ALARM EQUIPMENT LAYOUT
FIRST FLOOR

MANAGER: AQF30156 - FA - 30

REV E

Wellington City Council
11 June 2021

