

We are proposing a change in your area

Kia ora,

This leaflet is to let you know about a change we are proposing to make in your neighbourhood.

Proposal:

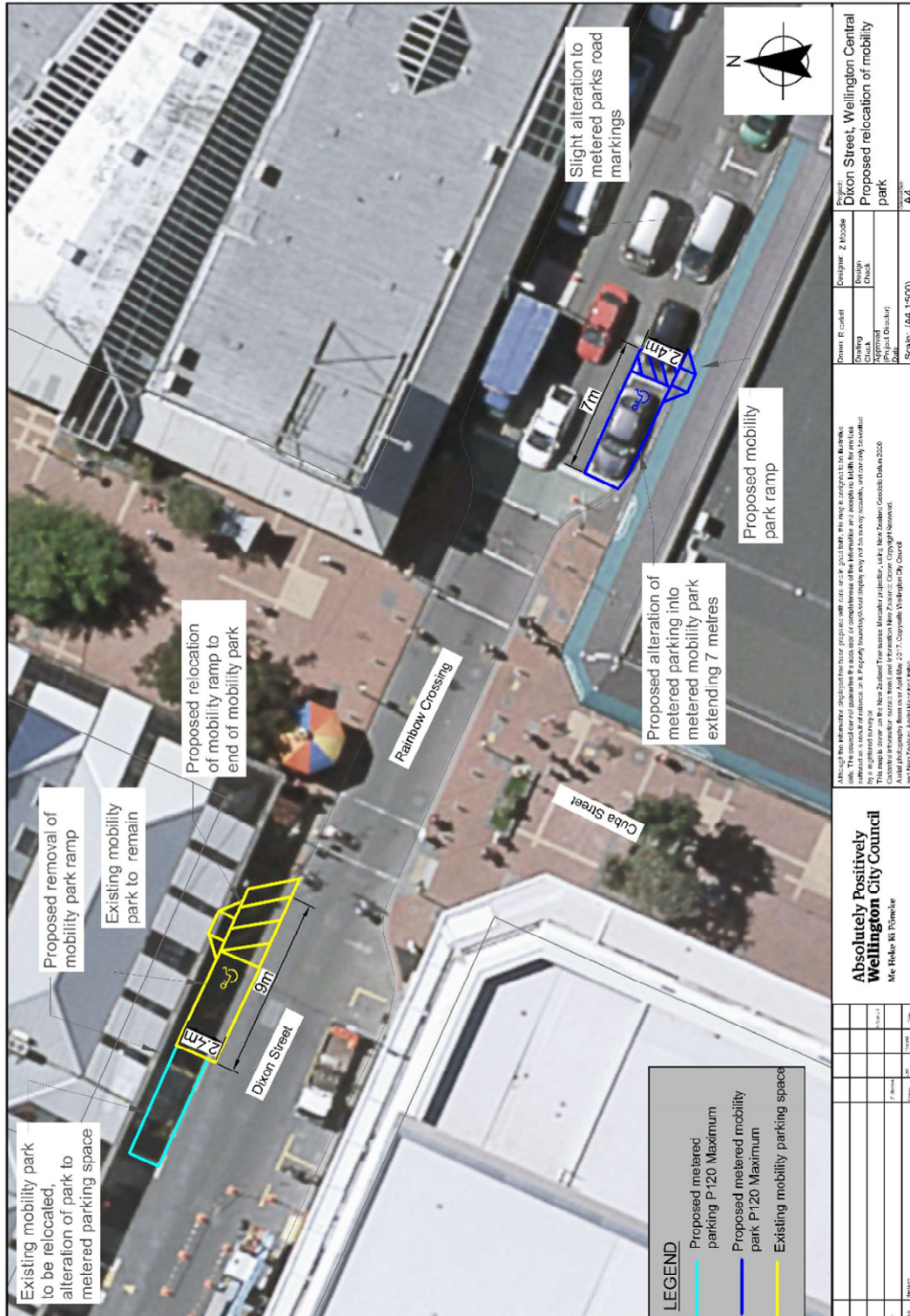
Reference	TR65-21 Dixon Street, Te Aro – Relocation of mobility parking
What we'd like to do	<ul style="list-style-type: none">Relocate the existing mobility parking space on the north side of Dixon Street west of Cuba Mall to the east side of Cuba Mall on the south side of Dixon Street.Relocate the existing metered parking space on the south side of Dixon Street east of Cuba Mall to the west side of Cuba Mall on the north side of Dixon Street.
Why we are proposing the change	<ul style="list-style-type: none">Safety and accessibility concerns have been raised regarding the existing mobility parking spaces on Dixon Street through an independent safety audit of the rainbow crossing.We have investigated the existing mobility parks on Dixon Street and the front mobility park does not meet the current mobility park guidelines. This park is currently too short and narrow alongside the mobility ramp being too steep with a 12.2% gradient. We propose to upgrade these mobility parks to ensure they meet the current guidelines. This can be achieved by relocating the existing front mobility park to the opposite side of the road. This will also give mobility park users on Dixon Street the opportunity to park either on the left or right side of the road, ensuring safer accessibility for the variety of mobility park users.
Location – where we propose to make the change	Dixon Street, Te Aro – adjacent to the rainbow crossing and Cuba Street intersection.
Impact	<ul style="list-style-type: none">Improves safety and accessibility for vehicles and pedestrians on Dixon Street.Net parking impact – no change, relocation only of mobility and metered parking spaces.Pedestrian impact – positive due to improved facilities for mobility park users.
How this relates to the parking policy	<ul style="list-style-type: none">Mobility park users are the highest priority under the parking policy.Support access for all – ensure mobility impaired people, older people, people who are pregnant, and people with babies can access the city, Council facilities, and venues. This will be achieved, in part, through an improvement in mobility parking across the city.Support safe movement – facilitate the safe and efficient movement of people and goods
Additional Information	Average daily traffic count – 5,333. To view the legal description for this Traffic Resolution, an electronic copy of the report will be available on the Council's website from 9.00am Thursday 1 April 2021 at www.wellington.govt.nz/haveyoursay or you can call (04) 499 4444 and we will send one out to you.

We are proposing a change in your area

Feedback	<ul style="list-style-type: none">• If you would like to provide us with specific feedback, you can do so by filling out an online submission form, downloading a printable submission form on www.wellington.govt.nz/haveyoursay or emailing us at trfeedback@wcc.govt.nz . Please note if you are giving feedback the consultation period opens 9.00am Thursday 1 April 2021 and finishes 5.00pm Friday 16 April 2021.• What we do with your personal information: All submissions (including name, but not contact details) are provided in their entirety to elected members and made available to the public at our office and on our website. Personal information (including contact details) will also be used for the administration of the consultation process including informing you of the outcome of the consultation. All information collected will be held by Wellington City Council, 113 The Terrace, Wellington, with submitters having the right to access and correct personal information.
Next Steps	<ol style="list-style-type: none">1. Feedback collated by Monday 19 April 2021.2. The proposal will go to the Regulatory Processes Committee on Tuesday 18 May 2021.3. If approved, the proposal will be installed within the following 3 months.

We are proposing a change in your area

Traffic Resolution Plan: TR65-21 Dixon Street, Te Aro – Relocation of mobility parking



We are proposing a change in your area

Legal Description:

Delete from Schedule F (Metered Parking) of the Traffic Restrictions Schedule

Column One	Column Two	Column Three
Dixon Street	<i>Metered Mobility Parking, At All Other Times, Displaying an Operation Mobility Permit Only</i>	<i>North side, commencing 211 metres north-west of its intersection with Taranaki Street (Grid coordinates, x= 1748935.0 m, y= 5427254.7 m), and extending in a north-westerly direction following the northern kerbline for 11.5 metres (2 parallel parking spaces).</i>
Dixon Street	<i>Metered P120 Maximum, Monday to Thursday 8:00am – 6:00pm, Friday 8:00am – 8:00pm, Saturday and Sunday 8:00am – 6:00pm</i>	<i>North side, commencing 222.5 metres north-west of its intersection with Taranaki Street (Grid coordinates, x= 1748935.0 m, y= 5427254.7 m), and extending in a north-westerly direction following the northern kerbline for 12.7 metres (2 parallel parking spaces).</i>
Dixon Street	<i>Metered P120 Maximum, Monday to Thursday 8:00am – 6:00pm, Friday 8:00am – 8:00pm, Saturday and Sunday 8:00am – 6:00pm</i>	<i>South side, commencing 137.5 metres north west of its intersection with Taranaki Street (Grid coordinates, x= 1748931.3 m, y= 5427248.7 m), and extending in a north-westerly direction following the southern kerbline for 44 metres (7 parallel parking spaces).</i>

Add to Schedule F (Metered parking) of the Traffic Restrictions Schedule

Column One	Column Two	Column Three
Dixon Street	<i>Metered Mobility Parking, At All Times, Displaying an Operation Mobility Permit Only, Metered parking P120 Maximum, Monday to Thursday 8am-6pm, Friday 8:00am – 8:00pm, Saturday and Sunday 8:00am – 6:00pm</i>	<i>South side, commencing 174.5 metres west of its intersection with Taranaki Street (Grid coordinates, x= 1748931.3 m, y= 5427248.7 m), and extending in a westerly direction following the southern kerb line for 7 metres.</i>

We are proposing a change in your area

Dixon Street	<i>Metered P120 Maximum, Monday to Thursday 8am-6pm, Friday 8:00am – 8:00pm, Saturday and Sunday 8:00am – 6:00pm</i>	<i>South side, commencing 137.5 metres west of its intersection with Taranaki Street (Grid coordinates, x= 1748931.3 m, y= 5427248.7 m), and extending in a westerly direction following the southern kerb line for 37 metres.</i>
Dixon Street	<i>Metered Mobility Parking, At All Times, Displaying an Operation Mobility Permit Only, Metered parking P120 Maximum, Monday to Thursday 8am-6pm, Friday 8:00am – 8:00pm, Saturday and Sunday 8:00am – 6:00pm</i>	<i>North side, commencing 211 metres north-west of its intersection with Taranaki Street (Grid coordinates, x= 1748935.0 m, y= 5427254.7 m), and extending in a westerly direction following the northern kerb line for 9 metres.</i>
Dixon Street	<i>Metered P120 Maximum, Monday to Thursday 8am-6pm, Friday 8:00am – 8:00pm, Saturday and Sunday 8:00am – 6:00pm</i>	<i>North side, commencing 220 metres north-west of its intersection with Taranaki Street (Grid coordinates, x= 1748935.0 m, y= 5427254.7 m), and extending in a westerly direction following the northern kerb line for 5 metres.</i>

Prepared By: Renee Corlett (Transport Engineer)

Approved By: Amin Shahin (Team leader Transport Engineering)

Date: 19/03/2021