

# We are proposing a change in your area

Kia ora,

This leaflet is to let you know about a change we are proposing to make in your neighbourhood.

## Proposal:

<b>Reference</b>	TR91-21 Kelburn Parade, Kelburn – Bus stop #4915 relocation
<b>What we'd like to do</b>	<ul style="list-style-type: none"><li>• Relocate Bus stop #4915 to allow for sufficient space for the safe entry and exit of buses.</li><li>• Reconfigure onsite parking restrictions.</li></ul>
<b>Why we are proposing the change</b>	<ul style="list-style-type: none"><li>• The bus stop relocation being proposed serves a number of purposes, in addressing either current issues or delivering betterment, as described below.</li><li>• The existing bus stop is uphill (+1:12 street gradient) of the existing accessibility route through the university (via Murphy building lifts and the bridge). The proposed bus stop location leads directly to the accessibility route and provides a safer place for arrival and departure. This also explains the location of the accessibility parks.</li><li>• There is a high volume of vehicular and pedestrian movement at the top end of Kelburn Parade. Pedestrians tend to use the signalised crossing closest to the roundabout rather than the traffic lights, and the footpath width is narrowest at this point. Relocating the bus stops between the two sets of pedestrian traffic lights further north on Kelburn Parade would create a natural safe zone and encourage all pedestrians to use the traffic lights.</li><li>• The existing location becomes very congested when a pōwhiri is held at the marae and is an ongoing OH&amp;S issue. Visitors spill onto the street in front of the waharoa and merge with people waiting for buses causing congestion around the pedestrian traffic lights. The new building design partially addresses the issue by widening the gap between buildings and relocating the waharoa closer to the ātea so there is a greater area for gathering off the street. It is anticipated that the number of pōwhiri will increase quite significantly once the new building is in operation as the capacity for events and engagement has been increased by the building design.</li><li>• The main entry for the new building is located at the northern corner where the bus shelter is currently located – this is ramped and staired for accessibility into the main engagement space and addresses cultural protocol for entry onto the marae (ie. it allows for a central control point and the ability for covered access in poor weather to the ātea). We would like to reduce the number of people gathering to wait for buses at the main building entry to the Living Pā and ensure clear wayfinding.</li></ul>

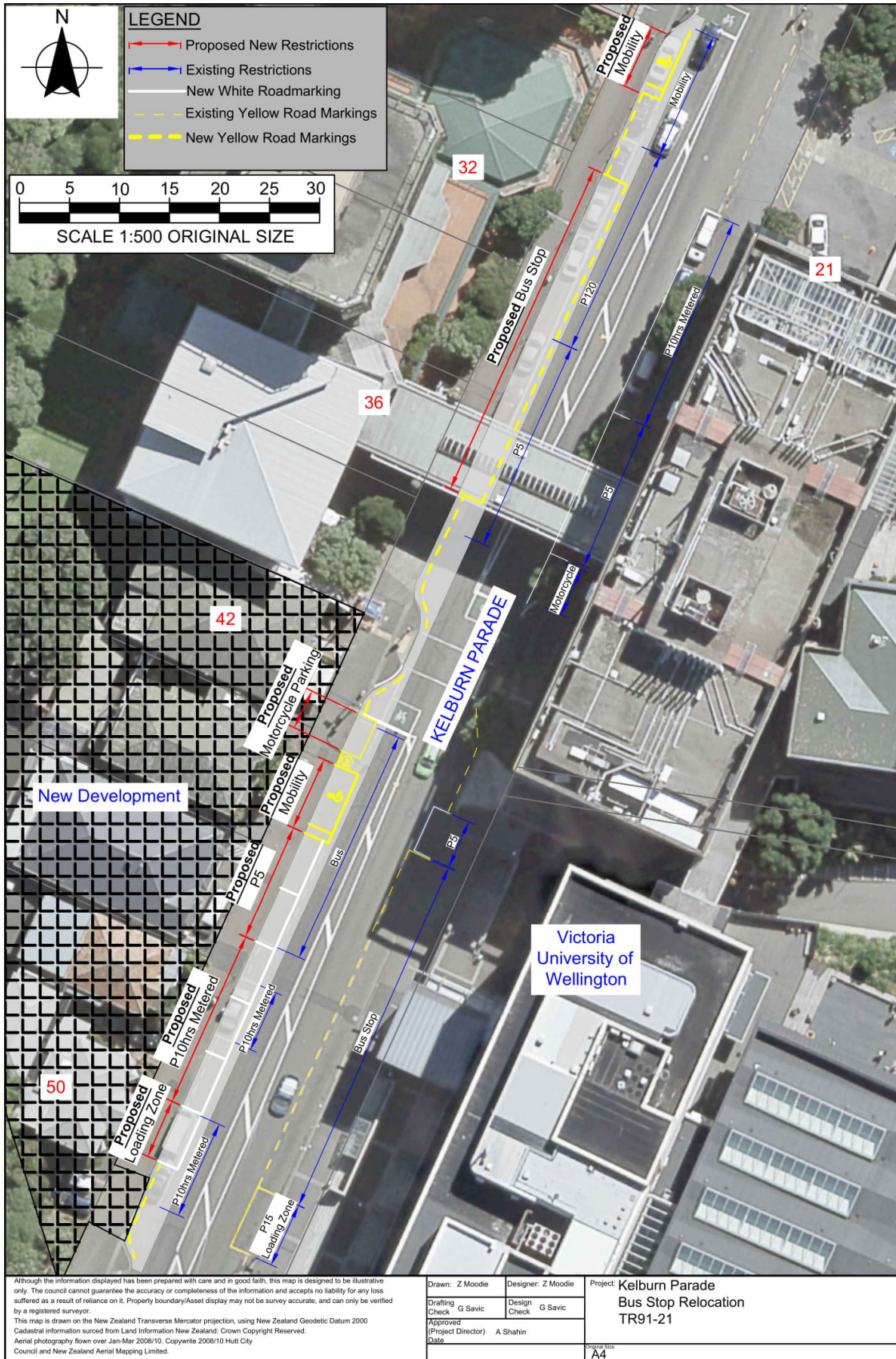
# We are proposing a change in your area

	<ul style="list-style-type: none"> <li>The proposed relocation provides connectivity with the main entry points to Kelburn Campus - The Hub (via the southern set of pedestrian traffic lights), and the main administrative centre housed within Hunter Building (via the northern set of pedestrian traffic lights).</li> <li>The Living Pā is designed to meet the Living Building Challenge certification criteria. The building will measure air quality for the health and wellbeing of occupants, generate 105% of its energy needs, operate entirely on water captured from rainfall, and will sequester more carbon than is produced by its construction and operation. It is a naturally ventilated building and relies on occupants opening windows to moderate indoor air temperature. We would like to reduce the impact of noise and pollutants into the building, especially given occupants will be relatively close to street level. Electric buses will assist in addressing this concern, but moving the bus stop downhill would help immensely – particularly given that the Murphy building does not address the street for occupants.</li> </ul>
<b>Location – where we propose to make the change</b>	Kelburn Parade, Kelburn – outside no.28-no.50 Kelburn Parade.
<b>Impact</b>	<ul style="list-style-type: none"> <li>Improves safety and accessibility for pedestrians as described above</li> <li>Net parking impact – Net removal of four P120 parking spaces and two P5 parking space, and the addition of a loading zone and motorcycle park.</li> <li>Pedestrian impact – positive due to accessibility to a safe zone and the ease in utilising the pedestrian traffic lights to cross the street.</li> <li>Resizing Bus stop #4915. to allow buses to enter/exit safely.</li> </ul>
<b>How this relates to the parking policy</b>	<ul style="list-style-type: none"> <li>Support city place-making, amenity and safety – ensure on-street parking design and placement supports overall city amenity, safety, community building, heritage, creative arts, good urban design outcomes and attractive streetscapes.</li> </ul>
<b>Additional Information</b>	<ul style="list-style-type: none"> <li>Average monthly passenger number – 31,722.</li> <li>Average daily traffic count - 13,304</li> <li>To view the legal description for this Traffic Resolution, an electronic copy of the report will be available on the Council’s website from 9.00am Monday 28 June 2021 at <a href="http://www.wellington.govt.nz/haveyoursay">www.wellington.govt.nz/haveyoursay</a> or you can call (04) 499 4444 and we will send one out to you.</li> </ul>
<b>Feedback</b>	<ul style="list-style-type: none"> <li>If you would like to provide us with specific feedback, you can do so by filling out an online submission form, downloading a printable submission form on <a href="http://www.wellington.govt.nz/haveyoursay">www.wellington.govt.nz/haveyoursay</a> or emailing us at <a href="mailto:trfeedback@wcc.govt.nz">trfeedback@wcc.govt.nz</a> . <b>Please note if you are giving feedback the consultation period opens 9.00am Monday 28 June 2021 and finishes 5.00pm Sunday 11 July 2021.</b></li> <li>What we do with your personal information: All submissions (including name, but not contact details) are provided in their entirety to elected members and made available to the public at our office and on our website.</li> </ul>

## We are proposing a change in your area

	<p>Personal information (including contact details) will also be used for the administration of the consultation process including informing you of the outcome of the consultation. All information collected will be held by Wellington City Council, 113 The Terrace, Wellington, with submitters having the right to access and correct personal information.</p>
<b>Next Steps</b>	<ol style="list-style-type: none"><li>1. Feedback collated by Monday 12 July 2021.</li><li>2. The proposal will go to the Regulatory Processes Committee on Wednesday 11 August 2021.</li><li>3. If approved, the proposal will be installed within the following 3 months.</li></ol>

## Traffic Resolution Plan: Kelburn Parade, Kelburn – Bus stop #4915 relocation



Although the information displayed has been prepared with care and in good faith, this map is designed to be illustrative only. The Council cannot guarantee the accuracy or completeness of the information and accepts no liability for any loss suffered as a result of reliance on it. Property boundary/Asset display may not be survey accurate, and can only be verified by a registered surveyor.  
This map is drawn on the New Zealand Transverse Mercator projection, using New Zealand Geodetic Datum 2000  
Cadastral information sourced from Land Information New Zealand. Crown Copyright Reserved.  
Aerial photography flown over Jan-Mar 2008/10. Copyright 2008/10 Hutt City Council and New Zealand Aerial Mapping Limited.

Drawn: Z Moodie	Designer: Z Moodie
Drafting Check: G Savic	Design Check: G Savic
Approved (Project Director): A Shahin	Date:

Project: Kelburn Parade  
Bus Stop Relocation  
TR91-21  
A4



# We are proposing a change in your area

## Legal Description:

*Delete from Schedule B (Class Restricted) of the Traffic Restrictions Schedule*

Column One	Column Two	Column Three
<b>Kelburn Parade</b>	Mobility Parking Except for Vehicles Displaying an Operation Mobility Card, Monday to Saturday, 8:00am - 6:00pm	west side commencing 159 metres from its intersection with salamanca road and extending in a southerly direction for 14 metres.

*Delete from Schedule A (Time Limited) of the Traffic Restrictions Schedule*

Column One	Column Two	Column Three
<b>Kelburn Parade</b>	P120 At All Times	West side commencing 186 metres from its intersection with Salamanca Road (Grid coordinates X= 1748132.9m Y= 5427909.7 m) and extending in a southerly direction for 22 metres.
<b>Kelburn Parade</b>	P5 At All Times	West side commencing 208 metres from its intersection with Salamanca Road (Grid coordinates X= 1748132.9m Y= 5427909.7 m) and extending in a southerly direction for 21 metres.

*Delete from Schedule D (No Stopping) of the Traffic Restrictions Schedule*

Column One	Column Two	Column Three
<b>Kelburn Parade</b>	No Stopping At All Times	west side commencing 225 metres from its intersection with salamanca road and extending in a southerly direction for 21 metres.

*Delete from Schedule B (Class Restricted) of the Traffic Restrictions Schedule*

Column One	Column Two	Column Three
<b>Kelburn Parade</b>	Bus Stop At All Times	West side commencing 250 metres from its intersection with Salamanca Road (Grid coordinates X= 1748132.9m Y= 5427909.7 m) and extending in a southerly direction for 30 metres.

# We are proposing a change in your area

## Delete from Schedule D (No Stopping) of the Traffic Restrictions Schedule

Column One	Column Two	Column Three
<b>Kelburn Parade</b>	No Stopping At All Times	west side commencing 275.5 metres from its intersection with Salamanca road and extending in a southerly direction for 7 metres.

## Delete from Schedule A (Time Limited) of the Traffic Restrictions Schedule

Column One	Column Two	Column Three
<b>Kelburn Parade</b>	P120 Monday to Saturday, 8:00am - 6:00pm	west side commencing 282.5 metres from its intersection with Salamanca road and extending in a southerly direction for 42.5 metres.

## Add to Schedule B (Class Restricted) of the Traffic Restrictions Schedule

Column One	Column Two	Column Three
<b>Kelburn Parade</b>	Mobility Parking Except for Vehicles Displaying an Operation Mobility Card, Monday to Saturday, 8:00am - 6:00pm	West side, commencing 171 metres from its intersection with Salamanca Road (Grid coordinates X= 1748132.9m Y= 5427909.7 m) and extending for 6.5 metres.

## Add to Schedule D (No Stopping) of the Traffic Restrictions Schedule

Column One	Column Two	Column Three
<b>Kelburn Parade</b>	No Stopping At All Times	West side, commencing 177 metres from its intersection with Salamanca Road (Grid coordinates X= 1748132.9m Y= 5427909.7 m) and extending for 9 metres

## Add to Schedule B (Class Restricted) of the Traffic Restrictions Schedule

Column One	Column Two	Column Three
<b>Kelburn Parade</b>	Bus Stop At All Times	West side, commencing 186 metres from its intersection with Salamanca Road (Grid coordinates X= 1748132.9m Y= 5427909.7 m) and extending for 35 metres.

# We are proposing a change in your area

## Add to Schedule D (No Stopping) of the Traffic Restrictions Schedule

Column One	Column Two	Column Three
<b>Kelburn Parade</b>	No Stopping At All Times	West side, commencing 221 metres from its intersection with Salamanca Road (Grid coordinates X= 1748132.9m Y= 5427909.7 m) and extending for 24 metres.

## Add to Schedule B (Class Restricted) of the Traffic Restrictions Schedule

Column One	Column Two	Column Three
<b>Kelburn Parade</b>	Motorcycle Parking Monday to Sunday, 8:00am - 6:00pm	West side, commencing 245 metres from its intersection with Salamanca Road (Grid coordinates X= 1748132.9m Y= 5427909.7 m) and extending for 4 metres.
<b>Kelburn Parade</b>	Mobility Parking Except for Vehicles Displaying an Operation Mobility Card, Monday to Saturday, 8:00am - 6:00pm	West side, commencing 251 metres from its intersection with Salamanca Road (Grid coordinates X= 1748132.9m Y= 5427909.7 m) and extending for 6.5 metres.

## Add to Schedule D (No Stopping) of the Traffic Restrictions Schedule

Column One	Column Two	Column Three
<b>Kelburn Parade</b>	No Stopping At All Times	West side, commencing 249 metres from its intersection with Salamanca Road (Grid coordinates X= 1748132.9m Y= 5427909.7 m) and extending for 1 metre.

## Add to Schedule A (Time Limited) of the Traffic Restrictions Schedule

Column One	Column Two	Column Three
<b>Kelburn Parade</b>	P5 At All Times	West side, commencing 257.5 metres from its intersection with Salamanca Road (Grid coordinates X= 1748132.9m Y= 5427909.7 m) and extending for 12 metres.

# We are proposing a change in your area

<b>Kelburn Parade</b>	Metered parking, P10hrs maximum, Saturday to Thursday 8am-6pm, Friday 8am- 8pm.	West side, commencing 271 metres from its intersection with Salamanca Road (Grid coordinates X= 1748132.9m Y= 5427909.7 m) and extending for 18 metres.
-----------------------	---	---

*Add to Schedule B (Class Restricted) of the Traffic Restrictions Schedule*

Column One	Column Two	Column Three
<b>Kelburn Parade</b>	Loading Zone P15, Goods & Service Vehicles Only	West side, commencing 289 metres from its intersection with Salamanca Road (Grid coordinates X= 1748132.9m Y= 5427909.7 m) and extending for 6 metres.

*Add to Schedule D (No Stopping) of the Traffic Restrictions Schedule*

Column One	Column Two	Column Three
<b>Kelburn Parade</b>	No Stopping At All Times	West side, commencing 275.5 metres from its intersection with Salamanca Road (Grid coordinates X= 1748132.9m Y= 5427909.7 m) and extending for 16 metres.

*Add to Schedule A (Time Limited) of the Traffic Restrictions Schedule*

Column One	Column Two	Column Three
<b>Kelburn Parade</b>	Metered parking, P10hrs maximum, Saturday to Thursday 8am-6pm, Friday 8am- 8pm.	West side, commencing 311 metres from its intersection with Salamanca Road (Grid coordinates X= 1748132.9m Y= 5427909.7 m) and extending for 14 metres

**Prepared By:** Gordana Savic

**(Public Transport Infrastructure Programme Manager)**

**Approved By:** Amin Shahin

**(Team Leader Transport Engineering)**

**Date:** 10/06/2021