

We are proposing a change in your area

Kia ora,

You are receiving this leaflet as **we would like to inform you of a proposed change** we are making in or around your neighbourhood/place of business.

The Council is consulting on increasing parking fees through the Long-Term Plan process. Part of this process is to look at new areas where fees can be applied. To ensure that the Council can make a timely decision on increasing parking fees and areas where these would apply, we need to comply with our traffic bylaw. This requires a traffic resolution to be drafted to increase the fees and create new areas, and for the traffic resolution to be publicly notified. The public are then able to make comments on the resolution, and at the Council's discretion make oral submissions.

The Strategy and Policy Committee will be receiving any submissions on this traffic resolution and making a recommendation to the Council on whether or not to adopt the traffic resolution. The Council will then consider the public input from the traffic resolution process, and the long-term plan consultation before finally determining whether to increase parking fees and new areas where these might apply. If fees are increased and or new areas agreed the traffic resolution will then be passed by Council, if not it will lapse. The Council may decide to amend the level of fee increase or the areas to be adopted in the report as part of those deliberations.

The traffic resolution also extends meter operating hours Sun-Thu to 8pm and Fri-Sat to 10pm. Comment on this extension is welcome under this traffic resolution process. The Council may either decide to do all of increasing fees, extending meter operating hours, creating new metered areas, or none of these.

Proposal:

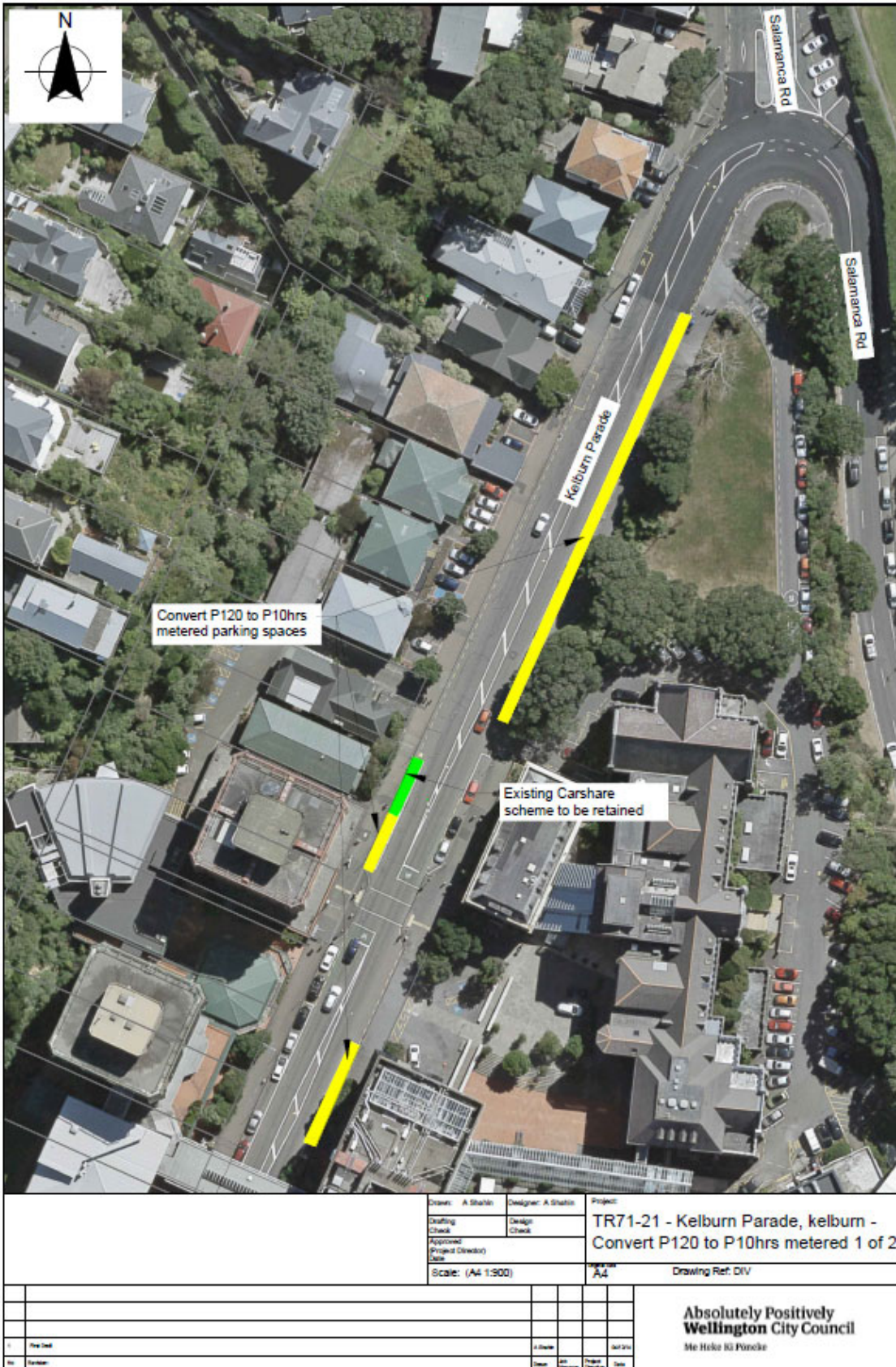
Reference	<ul style="list-style-type: none">TR75-21 Kelburn Parade, Kelburn – Convert P120 metered parking to P10hrs metered parking
What we'd like to do	<ul style="list-style-type: none">Change P120 parking spaces in Kelburn Parade to P10hrs metered parking at the fringe metered rate Hours of operation would be Sun-Thu 8am-6pm and Fri 8am-8pm.
Why we are proposing the change	<ul style="list-style-type: none">The Council's position is that people who use the parking spaces should contribute more towards the overall cost of providing on street parking. Kelburn has a number of P120 time restricted spaces around the area of the University which are utilised mostly by students. The proposal to charge for parking better reflects the value of parking, encourages turnover while offering the flexibility to park for longer periods.
Location – where we propose to make the change	<ul style="list-style-type: none">Kelburn Parade, Kelburn – Eastern and Western sides between no.22 and no.50
Impact	<ul style="list-style-type: none">Net parking impact – Conversion of 24, P120 designated parking spaces to P10hrs metered parking spaces.
How this relates to the parking policy	<ul style="list-style-type: none">Revenue through enforcement and meter charges part funds transport infrastructure costs, including the cost of providing the City's parking amenities, road resurfacing, signs and markings thereby reducing the need for rates funding.

We are proposing a change in your area

	<ul style="list-style-type: none">To meet the demand for road space from different transport modes, carparks are being permanently removed to provide for walkways, cycleways and bus priority lanes. This contributes to the Council goal of making the city more accessible. While the number of parks is reducing the demand for parking space and the cost of maintaining them is increasing.
Additional Information	<ul style="list-style-type: none">Average daily traffic count – 11,055.To view this Traffic Resolution, an electronic copy of the report will be available on the Council's website from 9.00am Friday 9 April 2021 at www.wellington.govt.nz/haveyoursay or you can call (04) 499 4444 and we will send one out to you.
Feedback	<ul style="list-style-type: none">If you would like to provide us with specific feedback, you can do so by filling out an online submission form, downloading a printable submission form on www.wellington.govt.nz/haveyoursay or emailing us at trfeedback@wcc.govt.nz. <p>Please note if you are giving feedback the consultation period opens 9.00am Friday 9 April 2021 and finishes 5.00pm Friday 23 April 2021.</p> <ul style="list-style-type: none">What we do with your personal information: All submissions (including name, but not contact details) are provided in their entirety to elected members and made available to the public at our office and on our website. Personal information (including contact details) will also be used for the administration of the consultation process including informing you of the outcome of the consultation. All information collected will be held by Wellington City Council, 113 The Terrace, Wellington, with submitters having the right to access and correct personal information.
Next Steps	<ol style="list-style-type: none">Oral submissions will take place at the Annual Plan / Long-term Plan Committee meeting on Thursday 6 May 2021.A decision will be made at the Annual Plan / Long-term Plan Committee meeting on Thursday 27 May 2021.If approved, the proposal will be installed between the approval date and 1st July 2021.

We are proposing a change in your area

Traffic Resolution Plan: TR75-21 Kelburn Parade, Kelburn – Convert P120 parking to P10hrs metered parking



We are proposing a change in your area

Convert P120 to P10hrs metered parking spaces

Kelburn Parade

Glasgow Street

Confirming BYL restrictions through resolution

Drawn: A Skelton		Designer: A Skelton	Project:	
Drafting Check:		Design Check:	TR71-21 - Kelburn Parade, kelburn -	
Approved (Project Director) Date:			Convert P120 to P10hrs metered 2 of 2	
Scale: (A4 1:400)			Sheet No:	A4
			Drawing Ref: DIV	
<p>Absolutely Positively Wellington City Council Me Heke Ki Pōneke</p>				

We are proposing a change in your area

Legal Description:

Delete from Schedule A (Time Limited) of the Traffic Restrictions Schedule

Column One	Column Two	Column Three
Kelburn Parade	<i>P120, Monday to Saturday, 8:00am - 6:00pm</i>	<i>west side commencing 124.7 metres from its intersection with Salamanca Road and extending in a southerly direction for 28 metres.</i>
Kelburn Parade	<i>P120, Monday to Saturday, 8:00am - 6:00pm</i>	<i>East side, commencing 143.5 metres from its intersection with Salamanca Road and extending in a southerly direction for 16 metres</i>
Kelburn Parade	<i>P120, Monday to Saturday, 8:00am - 6:00pm</i>	<i>west side commencing 282.5 metres from its intersection with Salamanca Road and extending in a southerly direction for 42.5 metres.</i>
Kelburn Parade	<i>P120, Monday to Saturday, 8:00am - 6:00pm</i>	<i>east side commencing 56 metres from its intersection with Salamanca Road and extending in a southerly direction for 80 meters.</i>
Kelburn Parade	<i>P120, Monday to Saturday, 8:00am - 6:00pm</i>	<i>East side, commencing 176 metres from its intersection with Salamanca Road (Grid Coordinates x = 1748139.3 m, y = 5427897.0 m) and extending in a southerly direction for 20 metres</i>
Kelburn Parade	<i>P120, Monday to Saturday, 8:00am - 6:00pm</i>	<i>West side commencing 186 metres from its intersection with Salamanca Road (Grid coordinates X= 1748132.9m Y= 5427909.7 m) and extending in a southerly direction for 22 metres.</i>
Kelburn Parade	<i>P120, Monday to Saturday, 8:00am - 6:00pm</i>	<i>West side commencing 141.7 metres from its intersection with Salamanca Road and extending in a southerly direction following the western kerbline for 5.5 meters.</i>

We are proposing a change in your area

Add to Schedule F (Metered Parking) of the Traffic Restrictions Schedule

Column One	Column Two	Column Three
Kelburn Parade	Metered parking, P10hrs maximum, Saturday to Thursday 8am-6pm, Friday 8am- 8pm.	East side, commencing 139.5 metres North of its intersection with Kelburn Parade (Grid Coordinates X=1,748,002.1601 m, Y=5,427,594.2499 m) and extending in a southerly direction following the eastern kerbline for 19.7 metres (3 Parallel parking spaces)
Kelburn Parade	Metered parking, P10hrs maximum, Saturday to Thursday 8am-6pm, Friday 8am- 8pm.	West side commencing 141.7 metres from its intersection with Salamanca Road and extending in a southerly direction following the western kerbline for 11.0 meters (2 Parallel parking spaces)
Kelburn Parade	Metered parking, P10hrs maximum, Saturday to Thursday 8am-6pm, Friday 8am- 8pm.	East side commencing 56 metres from its intersection with Salamanca Road and extending in a southerly direction for 80 meters (13 Parallel parking spaces)
Kelburn Parade	Metered parking, P10hrs maximum, Saturday to Thursday 8am-6pm, Friday 8am- 8pm.	West side commencing 266 metres from its intersection with Salamanca Road (Grid Coordinates X=1,748,131.7 m, Y=5,427,594.2499 5,427,900.5 m) and extending in a southerly direction for 6 metres (1 Parallel parking space)
Kelburn Parade	Metered parking, P10hrs maximum, Saturday to Thursday 8am-6pm, Friday 8am- 8pm.	West side commencing 280 metres from its intersection with Salamanca Road (Grid Coordinates X=1,748,131.7 m, Y=5,427,594.2499 5,427,900.5 m) and extending in a southerly direction for 10 metres (2 Parallel parking spaces)
Kelburn Parade	Metered parking, P10hrs maximum, Saturday to Thursday 8am-6pm, Friday 8am- 8pm..	West side commencing 292.7 metres from its intersection with Salamanca Road (Grid Coordinates X=1,748,131.7 m, Y=5,427,594.2499 5,427,900.5 m) and extending in a southerly direction for 15.5 metres (3 Parallel parking spaces)

We are proposing a change in your area

Add to Schedule D (No Stopping) of the Traffic Restrictions Schedule

Column One	Column Two	Column Three
Kelburn Parade	<i>No Stopping, At All Times</i>	<i>west side commencing 272 metres from its intersection with Salamanca Road (Grid Coordinates X=1,748,131.7 m, Y=5,427,594.2499 5,427,900.5 m) and extending in a southerly direction for 8 metres.</i>
Kelburn Parade	<i>No Stopping, At All Times</i>	<i>West side commencing 290 metres from its intersection with Salamanca Road (Grid Coordinates X=1,748,131.7 m, Y=5,427,594.2499 5,427,900.5 m) and extending in a southerly direction for 7 metres</i>

Delete from Schedule B (Class Restricted) of the Traffic Restrictions Schedule

Column One	Column Two	Column Three
Kelburn Parade	<i>Car share, at all times</i>	<i>West side commencing 124.7 metres from its intersection with Salamanca Road and extending in a southerly direction following the western kerbline for 17.0 meters.</i>

Add to Schedule B (Class Restricted) of the Traffic Restrictions Schedule

Column One	Column Two	Column Three
Kelburn Parade	<i>Car share, at all times</i>	<i>West side commencing 124.7 metres from its intersection with Salamanca Road and extending in a southerly direction following the western kerbline for 11.0 meters.</i>

We are proposing a change in your area

Prepared By:

Melanie Goodger

**(Commercial Operations T/L
Parking Services)**

Amin Shahin

(T/L Transport Engineering)

Approved By:

Steve Spence

**(Chief Advisor Transport &
Infrastructure)**

Date:

01/04/2021