

# We are proposing a change in your area

Kia ora,

This leaflet is to let you know about a change we are proposing to make in your neighbourhood.

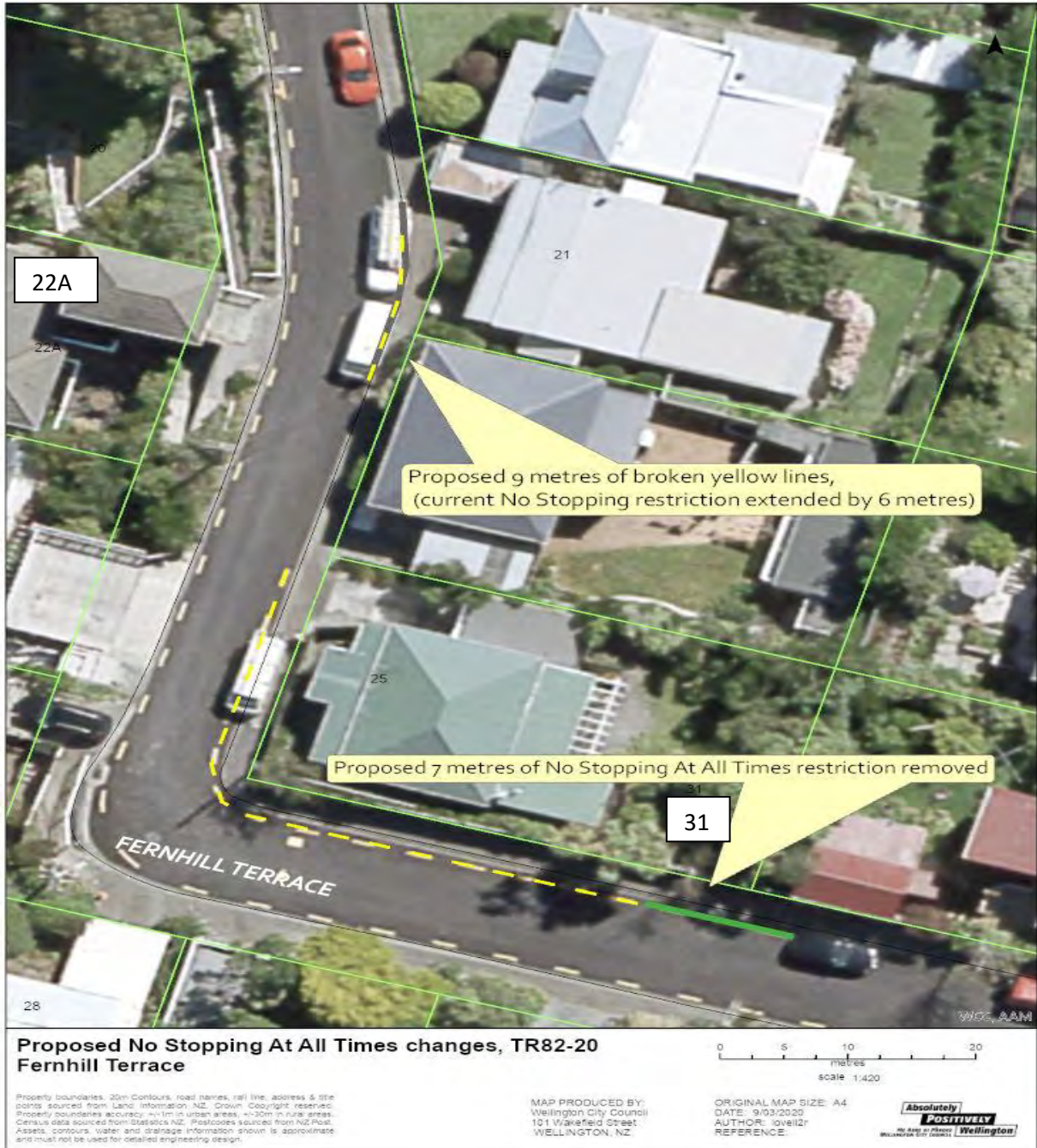
## Proposal:

<b>What we'd like to do</b>	<ul style="list-style-type: none"><li>Extend existing broken yellow lines by 6 metres and remove 7 metres of broken yellow lines in 2 separate locations on Fernhill Terrace.</li></ul>
<b>Why we are proposing the change</b>	<ul style="list-style-type: none"><li>Council officers received a petition from residents on Fernhill Terrace to address parking obstructing vehicle access. We are therefore proposing extending broken yellow lines opposite 22a Fernhill Terrace. To compensate the loss of one parking space residents were in agreement that another parking space should be created if possible.</li></ul>
<b>Location – where we propose to make the change</b>	<ul style="list-style-type: none"><li>Fernhill Terrace, Wadestown - between no. 21 and no. 23 and outside no. 31.</li></ul>
<b>Impact</b>	<ul style="list-style-type: none"><li>Improve safety and accessibility for vehicles Fernhill Terrace</li><li>Removal of one parking space opposite 22a Fernhill Terrace</li><li>Installation of one parking space outside 31 Fernhill Terrace.</li></ul>
<b>Additional Information</b>	<ul style="list-style-type: none"><li>Average weekday traffic volume – 210 vehicles.</li><li>Due to Covid-19 restrictions this proposal was rescheduled.</li><li>To view the legal description for this Traffic Resolution, an electronic copy of the report will be available on the Councils website from 9.00am Tuesday 30 June 2020 at <a href="http://www.wellington.govt.nz/haveyoursay">www.wellington.govt.nz/haveyoursay</a> or you can call (04) 499 4444 and we will send one out to you.</li></ul>
<b>Reference</b>	<ul style="list-style-type: none"><li>TR82-20 Fernhill Terrace - No Stopping At All Times (Various).</li></ul>
<b>Feedback</b>	<p>If you would like to provide us with specific feedback, you can do so by filling out an online submission form, downloading a printable submission form on <a href="http://www.wellington.govt.nz/haveyoursay">www.wellington.govt.nz/haveyoursay</a> or emailing us at <a href="mailto:trfeedback@wcc.govt.nz">trfeedback@wcc.govt.nz</a>.</p> <p><b>Please note if you are giving feedback the consultation period opens 9.00am Tuesday 30 June 2020 and finishes 5.00pm Tuesday 14 July 2020.</b></p>

# We are proposing a change in your area

<p><b>Next Steps</b></p>	<ol style="list-style-type: none"> <li>1. Feedback collated by 15 July 2020,</li> <li>2. The proposal will go to Regulatory Processes Committee on 12 August 2020,</li> <li>3. If approved, the proposal will be installed within the next 3 months.</li> </ol>
--------------------------	---

## Traffic Resolution Plan: TR82-20 Fernhill Terrace, Wadestown– No Stopping At All Times



# We are proposing a change in your area

## Legal Description:

### Delete from Schedule D (No Stopping) of the Traffic Restrictions Schedule

Column One	Column Two	Column Three
<b>Fernhill Terrace</b>	<i>No Stopping At All Times</i>	<i>North side, commencing 23.5 metres north of its intersection with Pitt Street and extending in a westerly direction following the northern kerbline for 42 metres.</i>
<b>Fernhill Terrace</b>	<i>No Stopping At All Times</i>	<i>East side, commencing 78.5 metres north of its intersection with Pitt Street (Grid Coordinates: X = 1,748,721.5 m, Y = 5,430,781.4 m) and extending in a northerly direction following the eastern kerbline for 3 metres.</i>

### Add to Schedule D (No Stopping) of the Traffic Restrictions Schedule

Column One	Column Two	Column Three
<b>Fernhill Terrace</b>	<i>No Stopping At All Times</i>	<i>North side, commencing 31 metres west of its intersection with Pitt Street (Grid Coordinates: X = 1,748,764.3 m, Y = 5,430,740.5 m) and extending in a westerly direction following the northern and eastern kerbline for 35 metres.</i>
<b>Fernhill Terrace</b>	<i>No Stopping At All Times</i>	<i>East side, commencing 78.5 metres west and north of its intersection with Pitt Street (Grid Coordinates: X = 1,748,764.3 m, Y = 5,430,740.5 m) and extending in a northerly direction following the eastern kerbline for 9 metres.</i>

**Prepared By:** Reuben Lovell-Smith (Transport Engineer Assistant)

**Approved By:** Charles Kingsford (Principal Transport Engineer)

**Date:** 17/03/2020