

We are proposing a change in your area

Kia ora,

This leaflet is to let you know about a change we are proposing to make in your neighbourhood.

Proposal:

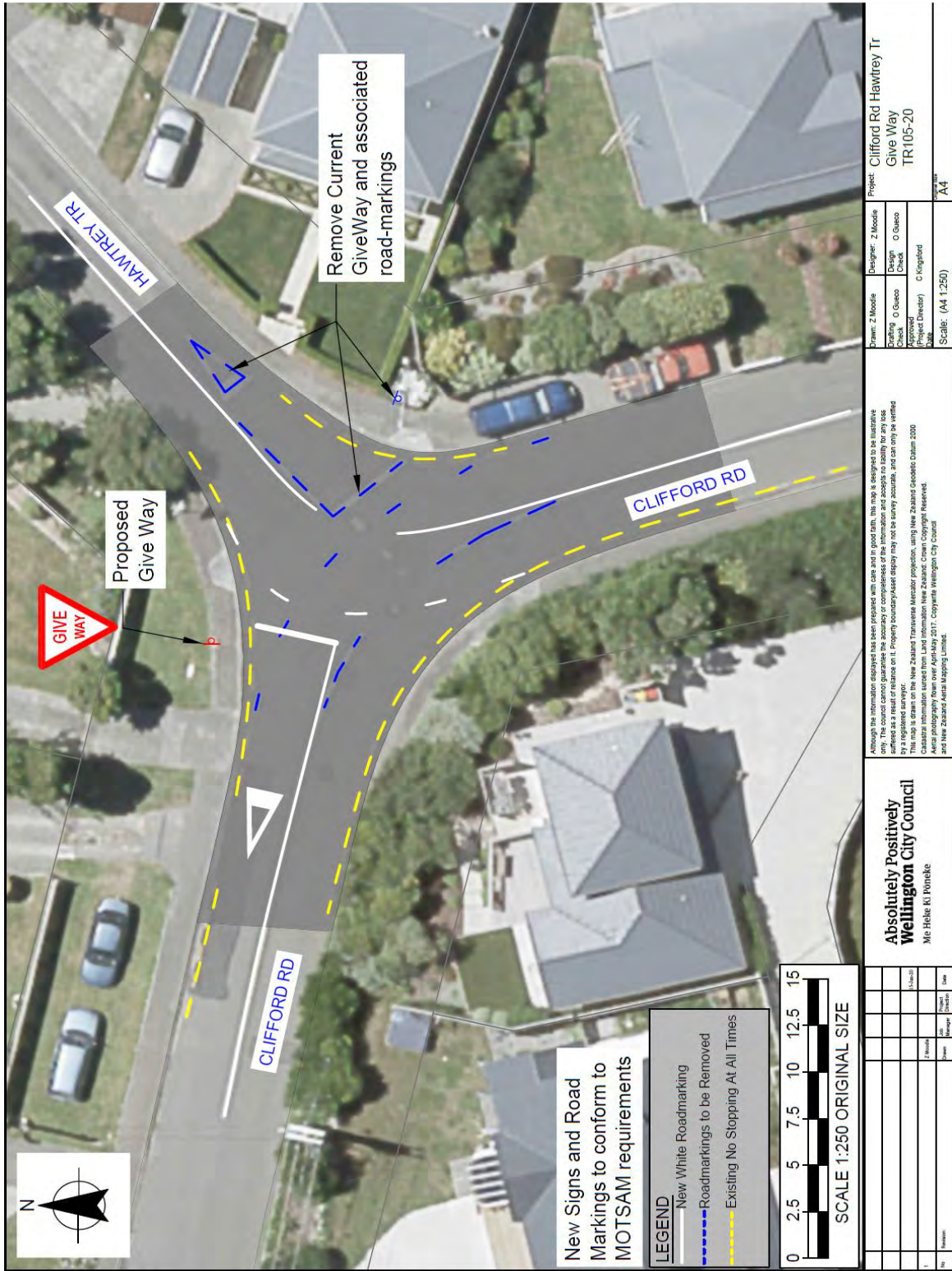
What we'd like to do	<ul style="list-style-type: none">Relocate the Give Way restriction from Hawtrey Terrace to the Clifford Road eastbound approach
Why we are proposing the change	<ul style="list-style-type: none">To allow more efficient traffic flow, particularly for buses, through this intersection.To improve pedestrian safety when crossing Clifford Road.In response to concerns raised by local residents on pedestrian and vehicle safety at this intersectionTo assist Greater Wellington Regional Council bus operations along this route
Location – where we propose to make the change	<ul style="list-style-type: none">Intersection of Clifford Road And Hawtrey Terrace, Johnsonville
Impact	<ul style="list-style-type: none">Safer and more efficient traffic flow at the intersectionProvides more certainty for pedestrians crossing Clifford Road from south to east
Additional Information	<ul style="list-style-type: none">The Metlink bus network now provides a 2-way route along the Clifford – Hawtrey roads. Originally, the bus route travelled in the southbound direction only. Buses now travel north along Bassett and Clifford Roads and turn right into Hawtrey Terrace. The right turn is made more difficult as the sight lines and visibility along Clifford Road at the intersection is limited raising concerns for potential conflict.Changes to the Number 1 bus route which were made in 2018 have resulted in a 2-way route. This change has introduced a potential safety risk at the intersection for pedestrians crossing Clifford Road and for traffic turning right into Hawtrey Terrace.Around 670 vehicles per day use Clifford Road and 1,890 vehicles per day use Hawtrey Terrace.To view the legal description for this Traffic Resolution, an electronic copy of the report will be available on the Council's website from 9.00am Tuesday 30 June 2020 at www.wellington.govt.nz/haveyoursay or you can call (04) 499 4444 and we will send one out to you.
Reference Number	<ul style="list-style-type: none">TR 105-20 - Give Way

We are proposing a change in your area

Feedback	<p>If you would like to provide us with specific feedback, you can do so by filling out an online submission form, downloading a printable submission form on www.wellington.govt.nz/haveyoursay or emailing us at trfeedback@wcc.govt.nz .</p> <p>Please note if you are giving feedback the consultation period opens 9.00am Tuesday 30 June 2020 and finishes 5.00pm Tuesday 14 July 2020.</p>
Next Steps	<ol style="list-style-type: none">1. Feedback collated by 15 July 2020,2. The proposal will go to Regulatory Processes Committee on 12 August 2020,3. If approved, the proposal will be installed within the next 3 months.

We are proposing a change in your area

Traffic Resolution Plan: TR 105-20 Clifford Road, Johnsonville – Give Way



We are proposing a change in your area

Add to Schedule G (Give Way and Stop Controls) of the Traffic Resolution Schedule

Column One	Column Two	Column Three
<i>Clifford Road</i>	<i>Give Way Control</i>	<i>Eastbound approach to its intersection with Hawtrey Terrace</i>

Prepared By: Orencio Gueco **(Transport Engineer)**

Approved By: Charles Kingsford **(Principal Transport Engineer)**

Date: 17/06/2020