

# We are proposing a change in your area

Kia ora,

You are receiving this leaflet as **we would like to inform you of a proposed change** we are making in or around your neighbourhood/place of business.

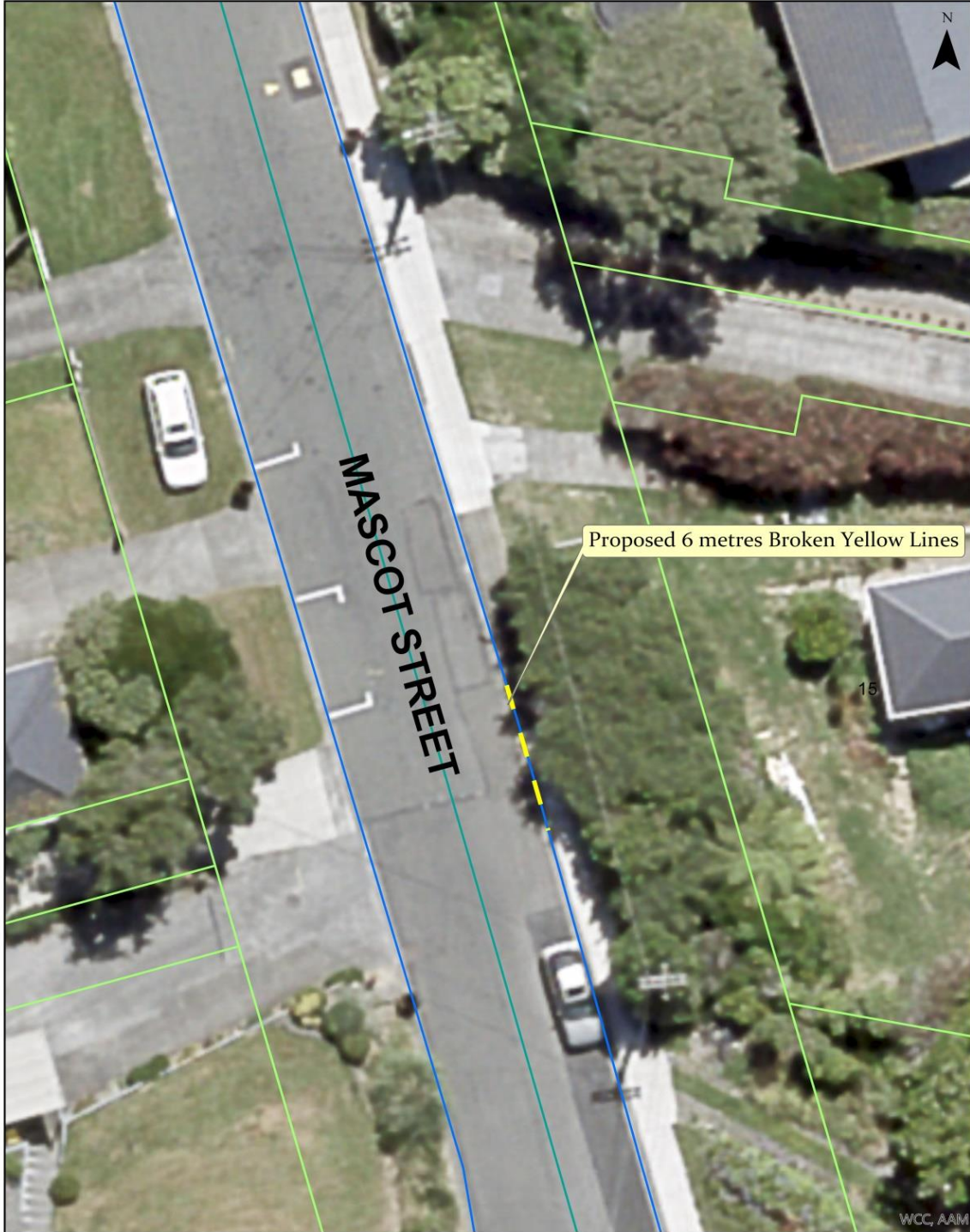
## Proposal:

<b>What we'd like to do</b>	<ul style="list-style-type: none"><li>• Install 6 metres of broken yellow lines.</li></ul>
<b>Why we are proposing the change</b>	<ul style="list-style-type: none"><li>• To improve accessibility for the residents at 10 and 12 Mascot Street.</li><li>• A local resident has requested that a No Stopping Restriction be installed in this location.</li></ul>
<b>Location – where we propose to make the change</b>	<ul style="list-style-type: none"><li>• Opposite the driveways at 10 and 12 Mascot Street, Tawa.</li></ul>
<b>Impact</b>	<ul style="list-style-type: none"><li>• Improved accessibility for residents.</li><li>• Loss of 1 parking space.</li></ul>
<b>Additional Information</b>	<ul style="list-style-type: none"><li>• To view the legal description for this Traffic Resolution, an electronic copy of the report will be available on the Councils website from 9.00am Friday 28 February 2020 at <a href="http://wellington.govt.nz/have-your-say/public-input/consultations/open-consultations">http://wellington.govt.nz/have-your-say/public-input/consultations/open-consultations</a> , or you can call (04) 499 4444 and we will send one out to you.</li></ul>
<b>Reference</b>	<ul style="list-style-type: none"><li>• TR 55-20 - No Stopping At All Times.</li></ul>
<b>Feedback</b>	<p>If you would like to provide us with specific feedback, you can do so by filling out an online submission form, downloading a printable submission form at <a href="http://wellington.govt.nz/have-your-say/public-input/consultations/open-consultations">http://wellington.govt.nz/have-your-say/public-input/consultations/open-consultations</a> , or by emailing us on <a href="mailto:trfeedback@wcc.govt.nz">trfeedback@wcc.govt.nz</a> .</p> <p><b>Please note if you are giving feedback the consultation period opens 9.00am 28 February 2020 and finishes 5.00pm Friday 13 March 2020.</b></p>
<b>Next Steps</b>	<ol style="list-style-type: none"><li>1. Feedback collated by Monday 16 March 2020.</li><li>2. The proposal will go to Regulatory Processes Committee on Wednesday 15 April 2020.</li><li>3. If approved, the proposal will be installed within the next 3 months.</li></ol>

# We are proposing a change in your area

Absolutely Positively  
**Wellington City Council**  
Me Heke Ki Pōneke

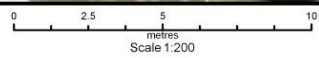
## Traffic Resolution Plan: TR 55-20 Mascot Street, Tawa –No Stopping Restriction



### Mascot Street, Tawa

#### Proposed Broken Yellow Lines

Property boundaries, 20m Contours, road names, rail line, address & title points sourced from Land Information NZ. Crown Copyright reserved. Property boundaries accuracy: +/-1m in urban areas, +/-30m in rural areas. Census data sourced from Statistics NZ. Postcodes sourced from NZ Post. Assets, contours, water and drainage information shown is approximate and must not be used for detailed engineering design. Other data has been compiled from a variety of sources and its accuracy may vary, but is generally +/- 1m.



MAP PRODUCED BY:  
Wellington City Council  
101 Wakefield Street  
WELLINGTON, NZ

Absolutely Positively  
**Wellington City Council**  
Me Heke Ki Pōneke

# We are proposing a change in your area

## Legal Description:

*Add to Schedule D (No Stopping) of the Traffic Resolution Schedule*

Column One	Column Two	Column Three
<b>Mascot Street</b>	<i>No Stopping At All Times</i>	<i>East side, commencing 110 metres south of its intersection with Larsen Crescent (Grid Coordinates X=1,752,763.79m Y=5,440,199.01m) and extending in a southerly direction, following the eastern kerbline for 6 metres.</i>

**Prepared By:** Alastair Helm (Transport Engineering Assistant)

**Approved By:** Charles Kingsford (Principal Transport Engineer)

**Date:** 20/02/20