

Reference: TR137 - 18

Location: Victoria Street - Wellington Central

Proposal: Convert two P5 parks to P120 metered mobility parks

Information: Wellington City Council is currently constructing a temporary home for the Royal New Zealand Ballet on the Michael Fowler Centre car park. All parking inside the car park including the mobility parks has been removed.

One mobility space has also been removed on Wakefield Street outside the WCC offices due to associated works on the Townhall.

WCC officers have identified the parking spaces outside of the Central Library on Victoria Street as a suitable location for two mobility parks. These 2 spaces will meet the grade and access requirements.

It is proposed to convert the two P5 parks directly outside of the library to P120 metered mobility parks. The remaining parks will be adjusted to maintain the same number of P5 parks outside of the library.

Key Dates:

- | | |
|---|-----------------|
| 1) Advertisement in the Dominion Post Newspaper | 23 October 2018 |
| 2) Feedback period closes. | 9 November 2018 |
| 3) If no objections received report sent to City Strategy Committee for approval. | 6 December 2018 |
| 4) If objections are received, further consultation, amendment/s, or proceed with explanation as appropriate. | |

Legal Description:

Remove from Schedule F (Metered Parking) of the Traffic Restrictions Schedule

Column One	Column Two	Column Three
Victoria Street	Metered parking, P120 Maximum, Monday to Thursday 8:00am - 6:00pm, Friday 8:00am - 8:00pm, Saturday and Sunday 8:00 - 6:00pm.	East side, commencing 9 metres south of its intersection with Harris Street (Grid coordinates x= 1748765.3 m, y= 5427778.9 m), and extending in a southerly direction following the kerbline for 22.5 metres. (4 parallel carparks).

Remove from Schedule A (Time Limited Parking) of the Traffic Restrictions Schedule

Column One	Column Two	Column Three
Victoria Street	P5, At All Times	East side, commencing 31.5 metres south of its intersection with Harris Street (Grid Coordinates X=2658787.079625 m, Y=5989490.954991 m) and extending in a southerly direction following the kerbline for 12 metres.

Add to Schedule F (Metered Parking) of the Traffic Restrictions Schedule

Column One	Column Two	Column Three
Victoria Street	Metered parking, P120 Maximum, Monday to Thursday 8:00am - 6:00pm, Friday 8:00am - 8:00pm, Saturday and Sunday 8:00 - 6:00pm.	East side, commencing 8.0 metres south of its intersection with Harris Street (Grid coordinates x= 1748765.3 m, y= 5427778.9 m), and extending in a southerly direction following the kerbline for 11.0 metres. (2 parallel carparks).

Add to Schedule A (Time Limited Parking) of the Traffic Restrictions Schedule

Column One	Column Two	Column Three
Victoria Street	P5, At All Times	East side, commencing 19.0 metres south of its intersection with Harris Street (Grid Coordinates x= 1748765.3 m, y= 5427778.9 m) and extending in a southerly direction following the kerbline for 18.0 metres. (3 parallel parks)

Add to Schedule F (Metered Parking) of the Traffic Restrictions Schedule

Column One	Column Two	Column Three
Victoria Street	Metered mobility parking - displaying an operation mobility permit only at all times, P120 Maximum, Monday to Thursday 8:00am - 6:00pm, Friday 8:00am - 8:00pm, Saturday and Sunday 8:00 - 6:00pm.	East side, commencing 37.0 metres south of its intersection with Harris Street (Grid coordinates x= 1748765.3 m, y= 5427778.9 m), and extending in a southerly direction following the kerbline for 6.5 metres.

Remove from Schedule A (Time Limited Parking) of the Traffic Restrictions Schedule

Column One	Column Two	Column Three
Victoria Street	P5, At All Times	East side, commencing 48 metres south of its intersection with Harris Street (Grid Coordinates X=2658787.079625 m, Y=5989490.954991 m) and extending in a southerly direction following the kerbline for 16 metres.

PROPOSED TRAFFIC RESOLUTION

Add to Schedule F (Metered Parking) of the Traffic Restrictions Schedule

Column One	Column Two	Column Three
Victoria Street	Metered mobility parking - displaying an operation mobility permit only at all times, P120 Maximum, Monday to Thursday 8:00am - 6:00pm, Friday 8:00am - 8:00pm, Saturday and Sunday 8:00 - 6:00pm.	East side, commencing 48.0 metres south of its intersection with Harris Street (Grid coordinates x= 1748765.3 m, y= 5427778.9 m), and extending in a southerly direction following the kerbline for 5.0 metres.

Add to Schedule A (Time Limited Parking) of the Traffic Restrictions Schedule

Column One	Column Two	Column Three
Victoria Street	P5, At All Times	East side, commencing 53.0 metres south of its intersection with Harris Street (Grid Coordinates x= 1748765.3 m, y= 5427778.9 m) and extending in a southerly direction following the kerbline for 11.0 metres. (2 parallel parks)

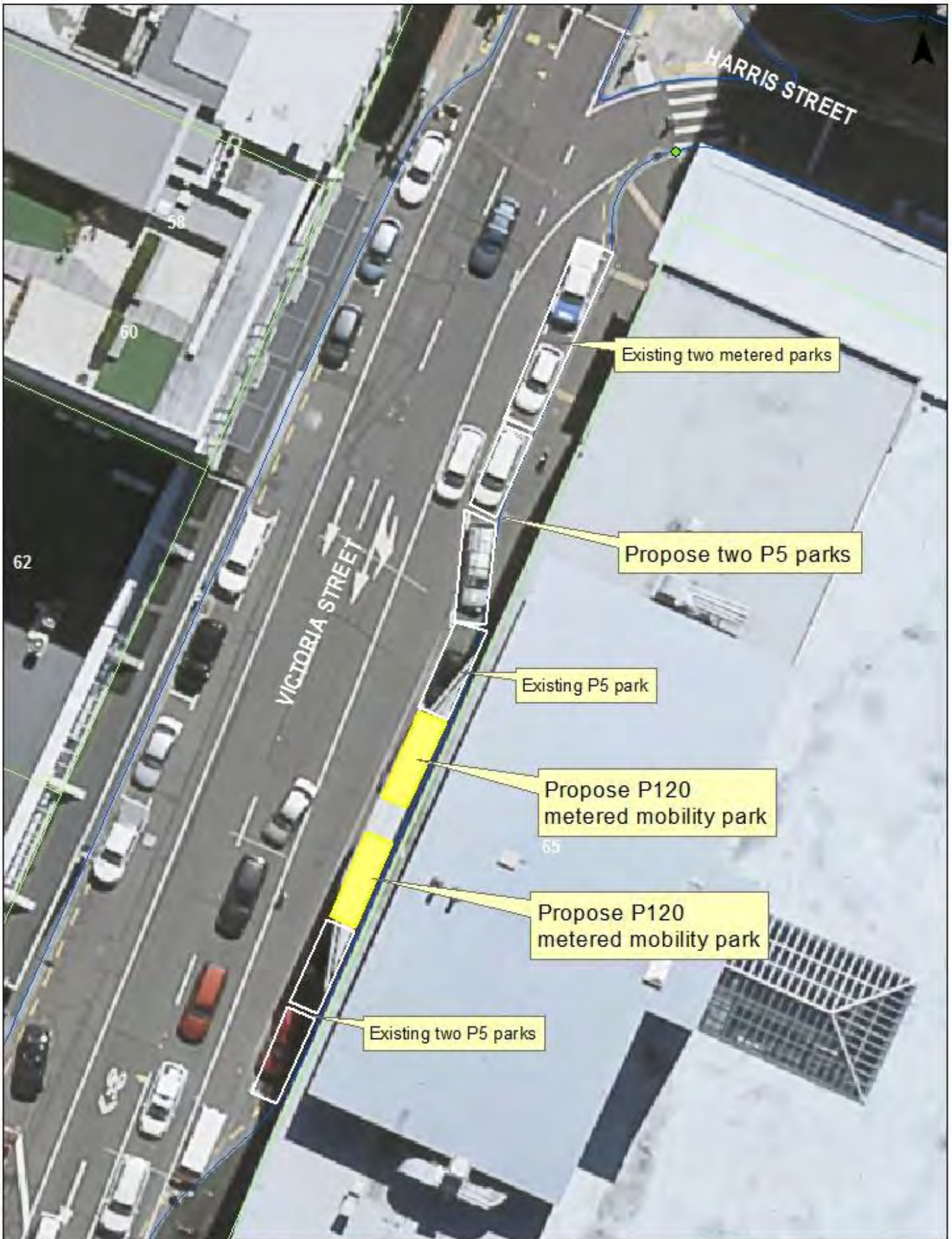
Prepared By: **Orencio Gueco**
Approved By: **Steve Spence**
Date: **15/10/18**

(Area Traffic Engineer)

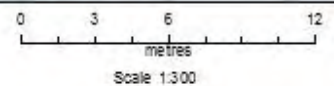
(Chief Transport Advisor)

WCC Contact:

Orencio Gueco
Area Traffic Engineer
Transport and Infrastructure
Wellington City Council
101 Wakefield Street / PO Box 2199,
Wellington
Phone: +64 4 803 8287
Email: orencio.gueco@wcc.govt.nz



TR 137-18 Victoria Street
 Propose two mobility parks



Property boundaries, 20m Contours, road names, rail line, address & site points sourced from Land Information NZ. Crown Copyright reserved. Property boundaries accuracy: 4-1m in urban areas, 4-20m in rural areas. Census data sourced from Statistics NZ. Postcodes sourced from NZPost. Assets, contours, water and drainage information shown is approximate and must not be used for detailed engineering design. Other data has been compiled from a variety of sources and its accuracy may vary, but is generally 4-1m.

MAP PRODUCED BY:
 Wellington City Council
 101 Wakefield Street
 WELLINGTON, NZ

ORIGINAL MAP SIZE: A4
 AUTHO R: gue0020
 DATE: 18/09/2016
 REFERENCE:

Absolutely Positively
Wellington City Council
 We're in it together