

# PROPOSED TRAFFIC RESOLUTION

**Reference Number:** TR 52-18

**Location:** Frobisher Street and Severn Street - Island Bay

**Proposal:** To provide two new bus stop locations on Frobisher Street, and change the time restriction on four existing bus stops on Severn Street, Island Bay as part of Wellington's new bus network.

**Information: Background**

The suburb of Island Bay will be served by the high frequency Route 1, as well as local routes 29 and 29e. The high frequency route 1 will operate along The Parade with a terminus at Reef Street. The route 29 will operate a 'U' shape route from Brooklyn to Newtown, via Owhiro Bay, Island Bay and Southgate. The Route 29e will operate the same route at peak times, however this will extend to central Wellington.

The proposed bus stops on Frobisher Street will be served by the Routes 29 and 29e.

The new routes 29 and 29e will replace the existing routes 4 and 29. The new routes will mean that public bus services will no longer travel along Severn Street but will use Frobisher Street, Robertson Street, Happy Valley Road, Owhiro Bay Parade, The Esplanade and Derwent Street. School bus routes will continue to use the bus stop on Severn Street during the school term.

A map of the new network, showing routes and frequencies, is provided below.

# PROPOSED TRAFFIC RESOLUTION



The planned frequency of the routes 29 and 29e at the proposed bus stops are:

<b>Weekday Peak</b>	Bus every 15 minutes	First bus 6.25am
<b>Weekday Daytime</b>	Bus every 30 minutes	-
<b>Weekday Evening</b>	Bus every 15 minutes	Last bus 10.30pm
<b>Saturday</b>	Bus every 30 minutes day time and every 60 minutes evening.	First bus 7.25am Last bus 10.25pm
<b>Sunday</b>	Bus every 60 minutes	First bus 8.25am Last bus 8.25pm

# PROPOSED TRAFFIC RESOLUTION

New bus stops are required on Frobisher Street near Severn Street to provide access to routes 29 and 29e for residents in the upper Severn Street area. (There is an ongoing investigation of options for a future pair of bus stops on Derwent Street which will provide services to residents in lower Severn Street).

Without the bus stops, residents in the Severn Street area will not be served by the route 29 or 29e.

We are also proposing to remove an existing bus stop on Severn Street as it is no longer required for the public service or as a school bus stop. The remainder of the stops on Severn Street would be converted to school service stops during the school term.

## **Proposed bus stops**

Two new bus stops are required on Frobisher Street in order to serve bus routes 29 and 29e. A plan of the proposed bus stop layout is provided in *Attachment 1 & 2*.

The bus stops would be supported with no stopping restrictions adjacent to the bus stops to facilitate safe access to/from the bus stops.

This proposal will also result in a net parking loss of six parking spaces.

As the public bus routes will no longer be using Severn Street, the bus stops on this street are proposed to be time limited to school bus times only, with parking allowed outside of these times.

It is proposed that two stops on Severn Street, one at Moselle Street (#7137) and the other at Wye Street (#7138) will discontinue as full time service stops and be restricted to school bus stops to be used in the morning between 8.00 – 8.30am, Monday to Friday.

Similarly the two stops on Severn Street near 55 (#6137) and near 121 (#6139) will be used in the afternoon between 3.00 – 4.15pm, Monday to Friday.

At all other times the areas will be available for car parking.

The existing stop on Severn Street just North of Frobisher St intersection (#7139) would be removed altogether because it is no longer required for the public service using Frobisher Street and is not required as a school bus stop.

# PROPOSED TRAFFIC RESOLUTION

A plan of the affected bus stops on Severn street is provided in the *Attachment 3*.

## **Consultation**

In January-February 2018, Greater Wellington undertook initial consultation with effected residents of 50 properties on Frobisher, Severn and Robertson Streets. Two options were consulted on for the Inbound stop. Option 1 located on Robertson Street, outside 31 Robertson Street and 120A Severn Street (requiring a bus layby to be constructed) and Option 2 located on Frobisher Street, outside 7 Frobisher Street. Only one location for the outbound stop was considered on Frobisher Street outside 116 Severn Street

Feedback was received from 15 submitters with the bus stops locations receiving mixed support from the community.

### ***Outbound bus stop:***

Eight responses supported the location of the outbound bus stop, while another six objected to the position citing the narrow road, loss of nearby car parking and poor driver behaviour (i.e. cutting the corner) potentially leading to vehicle conflicts. The erosion of the nearby bank and flooding in the area were also mentioned as concerns for the site.

### ***Inbound bus stop:***

Option 1 (Robertson Street) received six responses supporting the proposal of which one response made no comment and there were four objections. The objections cited the proximity to a private home, the busy road and poor sight lines.

Option 2 (Frobisher Street) received eight responses supporting the proposal of which three responses made no comment and there were three objections. The objections cited speed of vehicles on Frobisher Street, the lack of a footpath on the opposite side of the road and the close proximity to the next bus stop.

As a result of this consultation, Greater Wellington has requested two stops be installed on Frobisher Street as proposed in option 2 (Frobisher Street).

While it is accepted on balance that the proposed location of bus stops on Frobisher street are safe and suitable positions for the likely use of the bus stops and frequency of the service an alternative pairing of stops may be further investigated in the future. With

# PROPOSED TRAFFIC RESOLUTION

appropriate works to create bus laybys and footpaths suitable bus stops could be created to address visibility concerns and provide space for footpaths and future waiting shelters in the area. This would not however overcome the concerns of neighbouring properties for the disruption that a bus stop would create outside their homes.

Greater Wellington will manage the changes to the bus stops at the new locations in consultation with WCC ahead of the new bus network going live in July 2018.

## Key dates:

- |   |               |
|---|---------------|
| 1) Advertisement in the Dominion Post Newspaper                             | 16 March 2018 |
| 2) Feedback period closes.  | 30 March 2018 |
| 3) Report sent to City Strategy Committee for approval.                     | 19 April 2018 |
| 4) Feedback may result in further consultation or amendment as appropriate. |               |

# PROPOSED TRAFFIC RESOLUTION

## Legal Description:

Add to Schedule B (class restricted parking) of the Traffic Resolution Schedule

<b>Column One</b>	<b>Column Two</b>	<b>Column Three</b>
<b>Frobisher Street</b>	Bus Stop, at all times	Northern side commencing 15 metres West of the prolonged Western kerbline of Severn Street (Grid Coordinates X = 1,747,525.52, Y = 5,421,567.03) and extending in a Westerly direction for a distance of 15 metres (Metlink bus stop #7101)
<b>Frobisher Street</b>	Bus Stop, at all times	Western side commencing 132 metres North of prolonged Western kerbline of Severn Street (Grid Coordinates X = 1,747,438.87, Y = 5,421,637.28) and extending in a Northerly direction for a distance of 15 metres (Metlink bus stop #6101)

Add to Schedule D (no stopping restrictions) of the Traffic Resolution Schedule

<b>Column One</b>	<b>Column Two</b>	<b>Column Three</b>
<b>Frobisher Street</b>	No Stopping, at all times	Northern side commencing at the intersection of the prolonged Western kerbline of Severn Street (Grid Coordinates X = 1,747,525.52, Y = 5,421,567.03) and extending in a Westerly direction for a distance of 15 metres
<b>Severn Street</b>	No Stopping, at all times	Western side commencing at the prolonged Northern kerb line of Frobisher Street (X = 1,747,525.52, Y = 5,421,567.03) and extending in a Northerly direction for a distance of 10 metres
<b>Frobisher Street</b>	No Stopping, at all times	Northern side commencing 30 metres West of the prolonged Western kerbline of Severn Street (X = 1,747,525.52, Y = 5,421,567.03) and extending in a Westerly direction for a distance of 9 metres
<b>Frobisher Street</b>	No Stopping, at all times	Western side commencing 123 metres North of the prolonged



# PROPOSED TRAFFIC RESOLUTION

<b>Frobisher Street</b>	No Stopping, at all times	Western kerbline of Severn Street (X = 1,747,438.87, Y = 5,421,637.28) and extending in a Northerly direction for a distance of 9 metres Western side commencing 147 metres North of the prolonged Western kerbline of Severn Street (X = 1,747,438.87, Y = 5,421,637.28) and extending in a Northerly direction for a distance of 9 metres
-------------------------	---------------------------	--

Delete from Schedule B (class restricted parking) of the Traffic Resolution Schedule

<b>Column One</b>	<b>Column Two</b>	<b>Column Three</b>
<b>Severn Street</b>	Bus Stop, at all times	West side, commencing 22.5 metres north of its intersection with Frobisher Street and extending in a northerly direction following the western kerbline for 12 metres.
<b>Severn Street</b>	Bus Stop,	North side, commencing 292.5 metres East of its intersection with Wye Street and extending in an Easterly direction following the northern kerbline for 12 metres (Metlink bus stop #7137)
<b>Severn Street</b>	Bus Stop,	South side, commencing 114 metres West of its intersection with Moselle Street and extending in a Westerly direction following the southern kerbline for 12 metres (Metlink bus stop #6137)
<b>Severn Street</b>	Bus Stop,	East side, commencing 244 metres north of its intersection with Dennis Way and extending in an easterly direction following the eastern kerbline for 12 metres (Metlink bus stop #6139)

# PROPOSED TRAFFIC RESOLUTION

Add to Schedule B (class restricted parking) of the Traffic Resolution Schedule

<b>Column One</b>	<b>Column Two</b>	<b>Column Three</b>
<b>Severn Street</b>	Bus Stop, 8.00 – 8.30am Monday to Friday School Term Only	North side commencing 13 metres West of its intersection with Wye Street (Grid Coordinates X = 1,747,636.41, Y = 5,421,721.79) and extending in a Westerly direction following the Northern kerbline for a distance of 12 metres. (Metlink bus stop #7138)
<b>Severn Street</b>	Bus Stop, 8.00 – 8.30am Monday to Friday School Term Only	North side, commencing 292.5 metres East of its intersection with Wye Street (Grid Coordinates X = 1,747,636.41, Y = 5,421,721.79) and extending in an Easterly direction following the Northern kerbline for 12 metres (Metlink bus stop #7137)
<b>Severn Street</b>	Bus Stop, 3.00 – 4.15pm Monday to Friday School Term Only	South side, commencing 114 metres West of its intersection with Moselle Street (Grid Coordinates X = 1,747,956.28, Y = 5,421,918.41) and extending in a Westerly direction following the Southern kerbline for 12 metres (Metlink bus stop #6137)
<b>Severn Street</b>	Bus Stop, 3.00 – 4.15pm Monday to Friday School Term Only	East side, commencing 135 metres South of its intersection with Southern Cross Crescent (Grid Coordinates X = 1,747,625.48, Y = 5,421,706.35) and extending in an Southerly direction following the Eastern kerbline for 12 metres (Metlink bus stop #6139)



# PROPOSED TRAFFIC RESOLUTION

Prepared By : **Stephen Harte**  
Approved By : **Steve Spence**  
Date: **12 March 2018**

(Implementation Manager Network  
Improvements)  
(Chief Transport Advisor)

**WCC Contact:**

**Stephen Harte**  
Implementation Manager Network  
Improvements  
Wellington City Council  
101 Wakefield Street / PO Box 2199,  
Wellington  
Phone: +64 4 803 8084  
Email: [Stephen.Harte@wcc.govt.nz](mailto:Stephen.Harte@wcc.govt.nz)

# PROPOSED TRAFFIC RESOLUTION

## Attachment 1: Indicative layout Frobisher Street (outbound bus stop)



### FROBISHER STREET AT SEVERN STREET PROPOSED BUS STOP LAYOUT

SCALE: 1:500  
DRAWN BY: SMCNEILL  
DATE DRAWN: 15/01/2018

Disclaimer: All reasonable efforts are made to ensure the currency and accuracy of the information printed.

# PROPOSED TRAFFIC RESOLUTION

## Attachment 2: Indicative layout Frobisher Street (inbound bus stop)



Metlink Development Agency Limited © 2017

### FROBISHER STREET AT TEME WAY PROPOSED BUS STOP LAYOUT

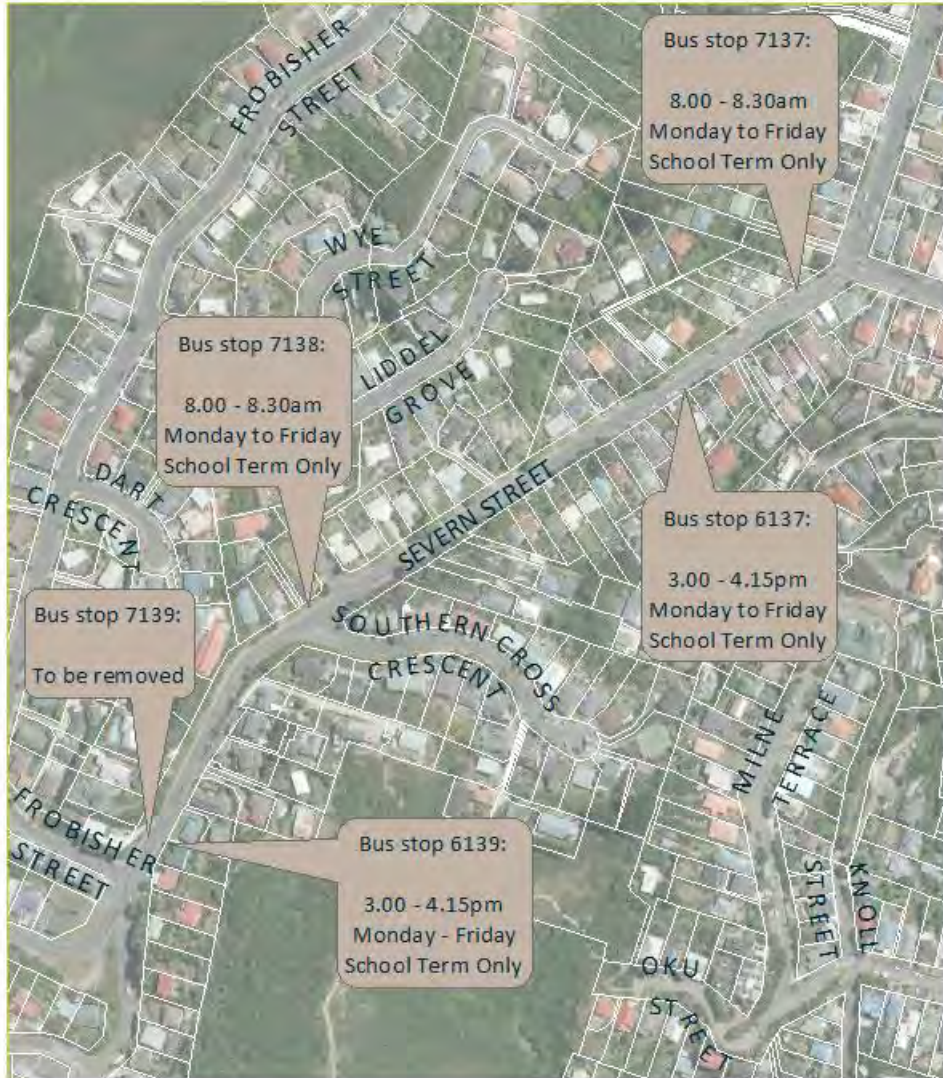
SCALE: 1:500  
DRAWN BY: SMCNEILL  
DATE DRAWN: 24/01/2017

Disclaimer: All reasonable efforts are made to ensure the currency and accuracy of the information printed.



# PROPOSED TRAFFIC RESOLUTION

## Attachment 3: Bus Stops to be changed on Severn Street



Regional Transport Agency | 01 762 1000

### SEVERN STREET BUS STOP TIME RESTRICTIONS

SCALE: 1:3000  
DRAWN BY: SMCNEILL  
DATE DRAWN: 15/01/2018

Disclaimer: All reasonable efforts are made to ensure the currency and accuracy of the information printed.