

Reference: TR142 – 17

Location: Salamanca Road - Kelburn
(Kelburn Park)

Revised Proposal: Convert P120 park to a mobility park at all times,
P120 mobility park Monday to Friday 8am-6pm,
No time restriction Saturday and Sunday

Information: After comments received from the initial public consultation under TR100-17, it is now proposed to convert one of the existing P120 time limited park into a mobility park at all times. A P120 time restriction will apply to this mobility park on Monday to Friday 8am-6pm only. No time restriction on Saturday and Sunday.

The Kelburn Park Pavilion Renewal project is nearing completion. In support of a Building Consent application, it was required to review the access and facilities for persons with disabilities to and within the building.

Currently, Kelburn Park has a total of 14 off street parks provided on site with no accessible car parks.

As part of the proposed works, at least one mobility car park must be provided to comply with the requirements for this Building Consent.

Net parking loss: 0 – conversion from P120 to a mobility park at all times.

Key Dates:

- 1) Advertisement in the Dominion Post Newspaper 26 September 2017
- 2) Feedback period closes. 13 October 2017
- 3) If no objections received report sent to City Strategy Committee for approval. 16 November 2017
- 4) If objections are received, further consultation, amendment/s, or proceed with explanation as appropriate.

Legal Description:

Remove from Schedule A (Time Limited Parking) of the Traffic Restrictions Schedule

Column One	Column Two	Column Three
<i>Salamanca Road (Kelburn Park)</i>	<i>P120, Monday to Friday, 8:00am – 6:00pm</i>	<i>Kelburn Park, commencing 128 metres north of its intersection with Kelburn Parade, (Grid Coordinates X= 748147.4m, Y= 5427901.2m) and extending in a northerly direction for 50 metres (14 angled parking spaces).</i>

Add to Schedule A (Time Limited Parking) of the Traffic Restrictions Schedule

Column One	Column Two	Column Three
<i>Salamanca Road (Kelburn Park carpark)</i>	<i>P120, Monday to Friday, 8:00am – 6:00pm</i>	<i>Kelburn Park carpark, commencing at a point 13 metres from the northern intersection point with Salamanca Road at the park driveway entrance, (Grid Coordinates X= 1,748,161.1881 m, Y= 5,428,032.6451 m) and extending in a northerly direction for 45 metres (13 angled parking spaces).</i>

Add to Schedule B (Class Restricted Parking) of the Traffic Restrictions Schedule

Column One	Column Two	Column Three
<i>Salamanca Road (Kelburn Park carpark)</i>	<i>No stopping except for vehicles displaying an operation mobility card at all times, P120 Monday to Friday, 8:00am-6:00pm only.</i>	<i>Kelburn Park carpark, commencing at a point 13 metres from the northern intersection point with Salamanca Road at the park driveway entrance, (Grid Coordinates X= 1,748,161.1881 m, Y= 5,428,032.6451 m) and extending in a northerly direction for 3 metres (1 mobility angled parking space).</i>

PROPOSED TRAFFIC RESOLUTION

Absolutely Positively
Wellington City Council

Me Heke Ki Pōneke

Prepared By: Orencio Gueco

(Area Traffic Engineer)

Approved By: Steve Spence

(Chief Transport Advisor)

Date: 20/09/17

WCC Contact:

Orencio Gueco

Area Traffic Engineer

Networks - Transport and Waste

Operations

Wellington City Council

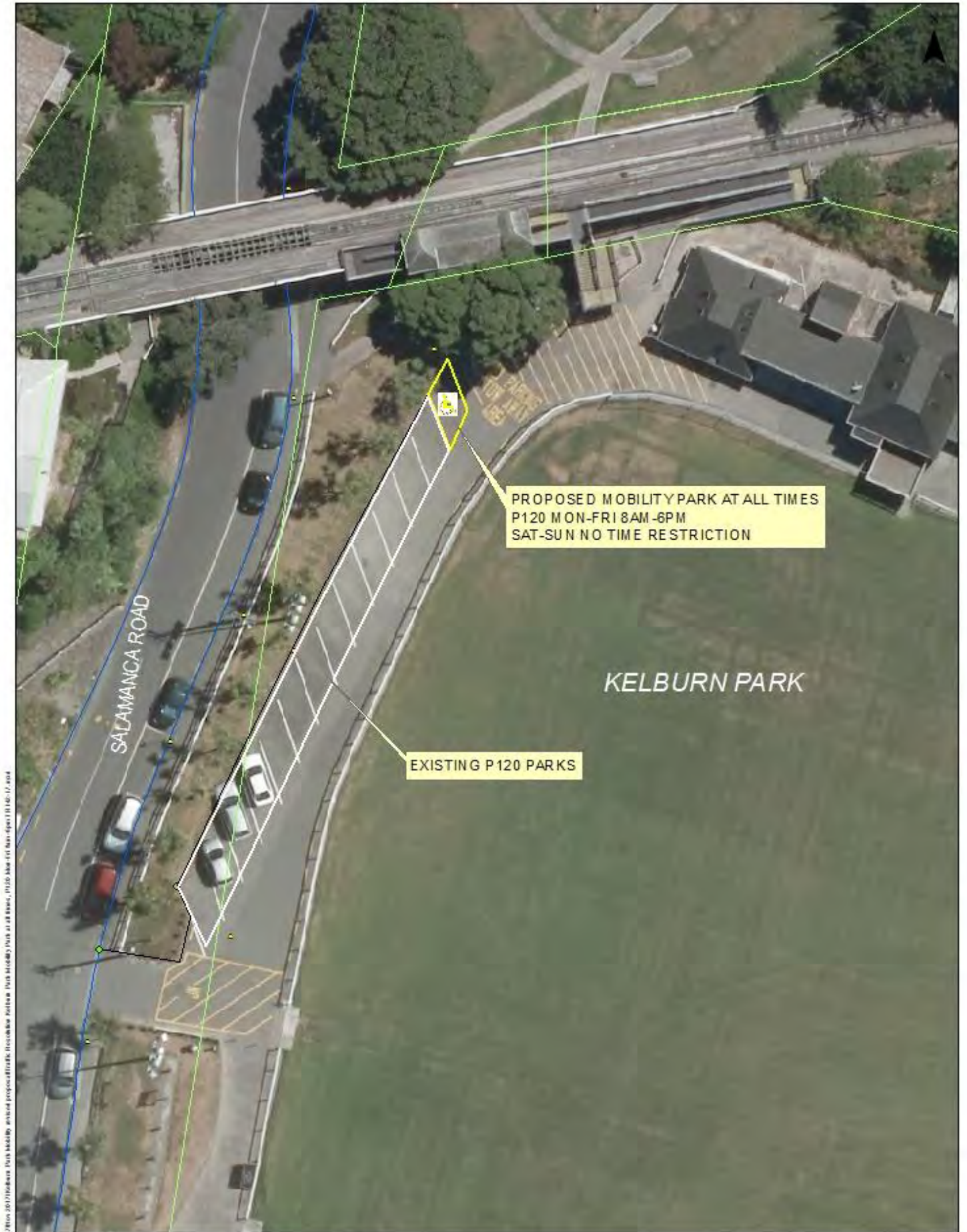
101 Wakefield Street / PO Box 2199,

Wellington

Phone: +64 4 803 8287

Fax: +64 4 801 3009

Email: orencio.queco@wcc.govt.nz



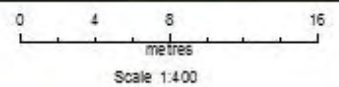
Report: 311014616; MK SOLUTIONS; 46101057/2610; 20170624; this map is a preliminary proposal. It is not a final plan. It is not a final plan. It is not a final plan. It is not a final plan.

Kelburn Park, Salamanca Road TR142-17
 Proposed mobility park at all times
 P120 Mon-Fri 8am-6pm

Property boundaries, 20m. Contours, road names, rail line, address & site points sourced from Land Information NZ. Crown Copyright reserved. Property boundaries accuracy: 4-5m in urban areas, 4-120m in rural areas. Census data sourced from Statistics NZ. Postcodes sourced from NZ Post. Assets, contours, water and drainage information shown is approximate and must not be used for detailed engineering design. Other data has been compiled from a variety of sources and its accuracy may vary, but is generally 4-5m.

MAP PRODUCED BY:
 Wellington City Council
 101 Wakefield Street
 WELLINGTON, NZ

ORIGINAL MAP SIZE: A4
 AUTHOR: gue0020
 DATE: 1/09/2017
 REFERENCE:



**Absolutely Positively
 Wellington City Council**
 No Place Like Home