

**Reference:** TR 123 – 16

**Location:** 56 Hobart Street - Miramar  
61 – 63 Hobart Street - Miramar

**Proposal:** Class restricted parking – Bus Stop (New)  
New bus stop on Hobart Street ( Outside #56)  
New bus stop on Hobart Street (Outside #'s 61 - 63)

**Information: Purpose**

To recommend that two new class restricted parking (bus stops) are formalised on Hobart Street.

## Background

Between 2011 to 2015 Greater Wellington Regional Council (GWRC) undertook the first fundamental review of the bus network in Wellington City in over 20 years. The review resulted in a bus network design which will be easier to understand, will be more efficient, and increases the coverage and number of services for Wellington City residents.

### East West Spine - Miramar Avenue, Hobart Street, Broadway

A new high frequency East-West Spine bus route ([C](#)) is proposed to service Miramar, linking Seatoun, Miramar, Kilbirnie, Hataitai, Wellington and Karori. By travelling via Miramar Shops the East-West Spine ([C](#)) will connect Seatoun and the southern area of Miramar around Broadway and Hobart Street to local facilities at Miramar Shops.

- Weekday peak – bus every 10 minutes with higher capacity buses.
- Weekday daytime – buses every 10 minutes.
- Weekday evening – buses every 30 minutes.
- Saturday – buses every 15 minutes daytime and every 30 minutes evening.
- Sunday – buses every 15 minutes daytime and every 30 minutes evening.

### Devonshire Road and Caledonia Street

No public service is proposed on Devonshire Road or Caledonia Street. Bus stops affected are located within 5 minutes' walk from new services planned for Hobart Street (routes [C](#), [C1](#) and [C2](#)) and Ira Street (routes [Q](#) and [Q1](#)). School bus services on these streets are not proposed to change at this stage.

Two (2) new bus stops are proposed.

GWRC propose that the bus stop configuration (where able) consist of a 9m 'no stopping' entry taper; a 15m bus box in which the bus stops, and a 9m 'no stopping' exit taper. The value of this is that it will allow the bus to position itself parallel to the curb and exit the bus stop in a safe manner.

In some circumstances, existing driveways will form part of the tapers and bus stops.

In order for the bus review to succeed and the new bus route to be run, GWRC requires two (2) new bus stops.

In order to complete all the bus stop changes required across the network, GWRC and WCC are phasing the traffic resolutions for these, however they will not come into effect until January 2018.

## **Proposal**

GWRC will manage the installation of infrastructure at the new location in consultation with WCC in early late 2017 to early 2018.

## **Traffic Safety Assessment**

GWRC Officers have reviewed the site in conjunction with the submissions received and have modified its location to reflect the concerns of the submitters.

The new locations are believed to be in safe and suitable positions for bus stops.

The existing central pedestrian refuge just to the north of the bus stops provides good pedestrian connectivity across Hobart Street.

On-street parking will be reduced by three (3) parking spaces.

The agreed site gives pedestrians and motorists good sight lines and vision of other traffic.

## **Consultation**

WCC are the owners of the road and road reserve.

Feedback has been initially sought from 10 surrounding properties.

GWRC Officers and WCC Officers have discussed the proposal and

verbally agreed on the site detailed in this report for the bus stop's location.

## Recommendation

GWRC recommends that WCC approves the new class restricted parking (a bus stop) to be installed on Hobart Street, Miramar.

## Key Dates:

- |   |                   |
|---|-------------------|
| 1) Advertisement in the Dominion Post Newspaper   | 26 July 2016      |
| 2) Feedback period closes.  | 12 August 2016    |
| 3) If no objections received report sent to Transport & Urban Development Committee for approval.             | 15 September 2016 |
| 4) If objections are received, further consultation, amendment/s, or proceed with explanation as appropriate. |                   |

## Legal Description:

Add to Schedule B (class restricted parking) of the Traffic Resolution Schedule

<b>Column One</b>	<b>Column Two</b>	<b>Column Three</b>
Hobart Street	Bus Stop, at all times	Western side, commencing 179 metres north of its intersection with Kedah Street (Grid coordinates x= 1751693.0 m, y= 5423755.9 m), and extending in a northerly direction following the western kerbline for 15 metres.
Hobart Street	Bus Stop, at all times	East side commencing 14 metres south of its intersection Devonshire Road (Grid coordinates x= 1751767.1 m, y= 5423949.5 m), and extending in a southerly direction following the eastern kerbline for 15 metres.

Add to Schedule D (no stopping restrictions) of the Traffic Resolution Schedule

<b>Column One</b>	<b>Column Two</b>	<b>Column Three</b>
Hobart Street	No Stopping, at all times	Western side, commencing 171 metres north of its intersection with Kedah Street (Grid coordinates x= 1751693.0 m, y= 5423755.9 m), and extending in a northerly direction following the western kerbline for 8 metres.
Hobart Street	No Stopping, at all times	Western side, commencing 194 metres north of its intersection with Kedah Street (Grid coordinates x= 1751693.0 m, y= 5423755.9 m), and extending in a northerly direction following the western kerbline to its intersection with Caledonia Street.
Hobart Street	No Stopping, at all times	East side commencing 29 metres south of its intersection Devonshire Road (Grid coordinates x= 1751767.1 m, y= 5423949.5 m), and extending in a southerly direction following the eastern kerbline for 9 metres

**Prepared By:** Charles Kingsford  
**Approved By:** Soon Teck Kong  
**Date:** 18/07/2016

**(Principal Traffic Engineer/Team Lead)**  
**(Manager Network Operations)**

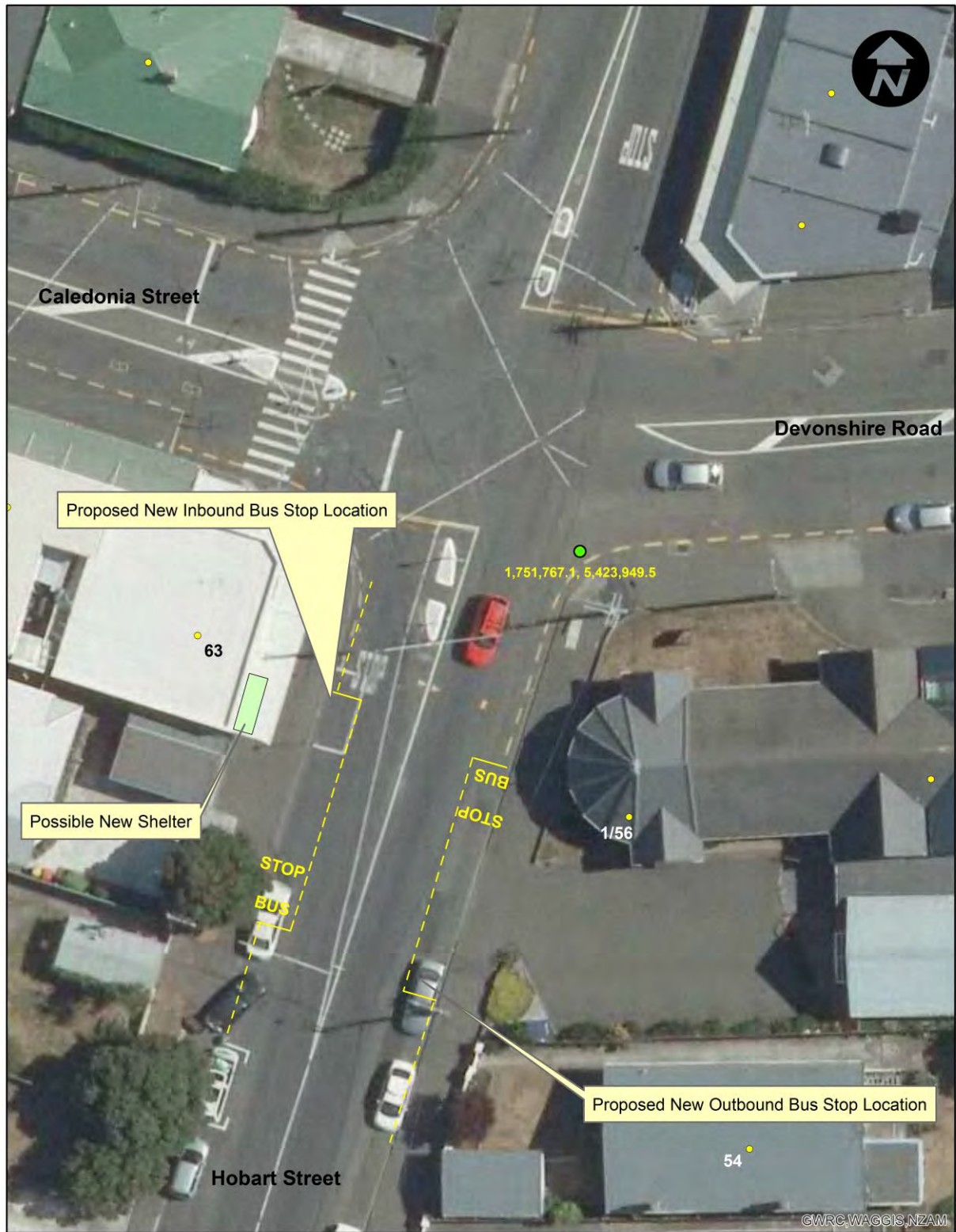
**WCC Contact:**

Lindsey Hill  
Project Co-ordinator, Transport Group –  
Network Operations  
Wellington City Council  
101 Wakefield Street / PO Box 2199,  
Wellington  
Phone: +64 4 803 8753  
Email: lindsey.hill@wcc.govt.nz

# PROPOSED TRAFFIC RESOLUTION

Absolutely Positively  
Wellington City Council

Me Heke Ki Pōneke



Bus Stop - At All Times  
TR123-16, Hobart Street, MIRAMAR

User Name: agatec  
Reference Scale: 1:300  
Date: 13/07/2016

Topographic and Cadastral data is copyright LINZ. LIDAR data is copyright GWRC.  
Regional Orthophotography Copyright : GWRC / NZAM 2010, 2013. Projection NZTM.

Document Path: C:\Users\agatec\Desktop\Master Bus Stop Base Map (Portrait).mxd  
Date: 13/07/2016