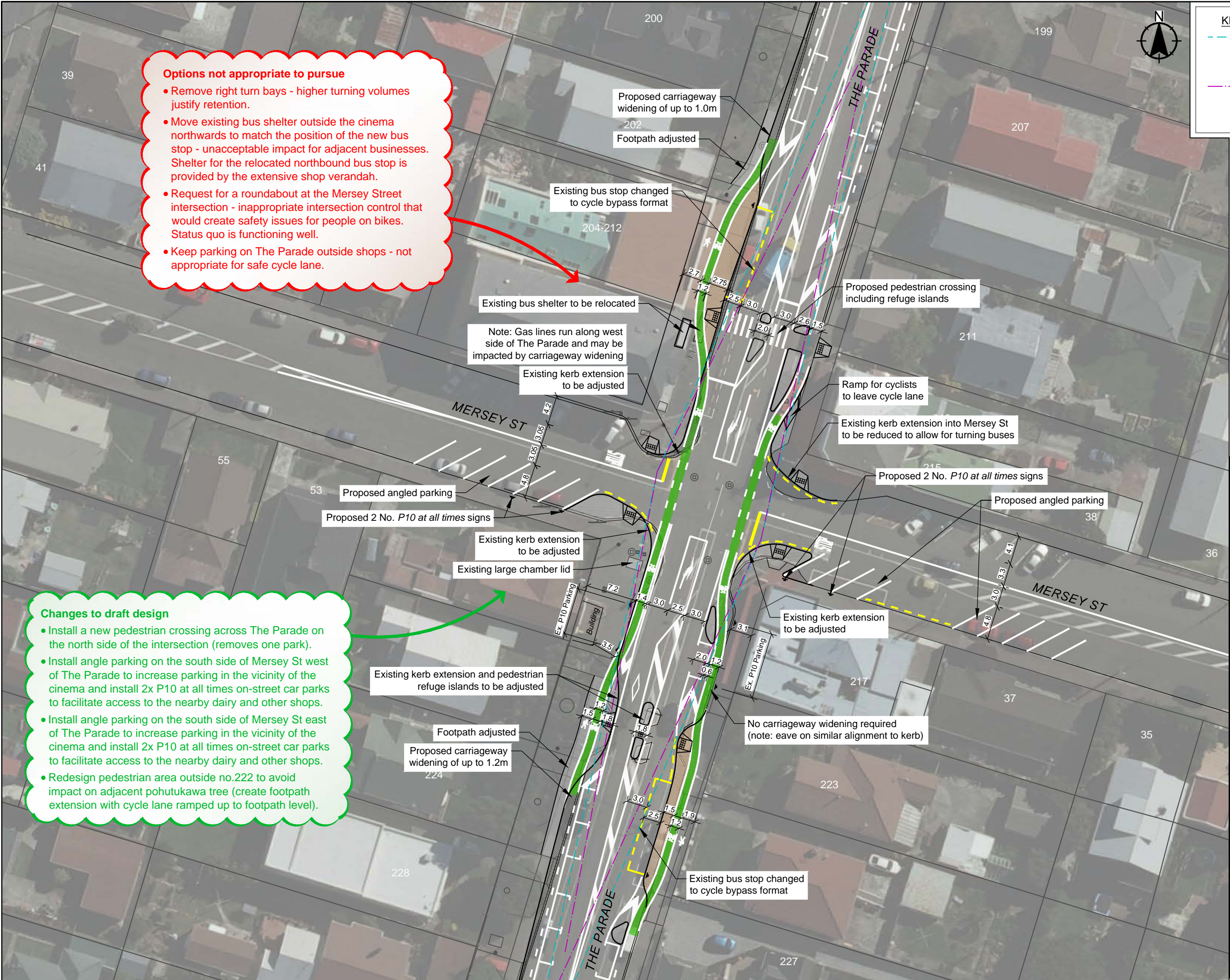


Options not appropriate to pursue

- Remove right turn bays - higher turning volumes justify retention.
- Move existing bus shelter outside the cinema northwards to match the position of the new bus stop - unacceptable impact for adjacent businesses. Shelter for the relocated northbound bus stop is provided by the extensive shop verandah.
- Request for a roundabout at the Mersey Street intersection - inappropriate intersection control that would create safety issues for people on bikes. Status quo is functioning well.
- Keep parking on The Parade outside shops - not appropriate for safe cycle lane.

Changes to draft design

- Install a new pedestrian crossing across The Parade on the north side of the intersection (removes one park).
- Install angle parking on the south side of Mersey St west of The Parade to increase parking in the vicinity of the cinema and install 2x P10 at all times on-street car parks to facilitate access to the nearby dairy and other shops.
- Install angle parking on the south side of Mersey St east of The Parade to increase parking in the vicinity of the cinema and install 2x P10 at all times on-street car parks to facilitate access to the nearby dairy and other shops.
- Redesign pedestrian area outside no.222 to avoid impact on adjacent pohutukawa tree (create footpath extension with cycle lane ramped up to footpath level).



KEY:

- SISD Sight line
 - 3m from lip of channel
 - 90m stopping distance
 - Distance based of RT = 1.5s
- MGSD Sight line
 - 3m from lip of channel
 - 69m stopping distance
 - Gap acceptance time of 5s

NOTE:
Right turn bays are required for traffic safety and to minimise delays.

**PRELIMINARY ONLY
NOT FOR CONSTRUCTION**

H Notes amended	SAW	15/08/14
G Various amendments	SAW	07/08/14
F Various amendments	SAW	13/06/14
E Various amendments	SAW	04/06/14
Revision	App	Date
Surveyed		
Designed	SAW	08/13
Drawn	PCV	08/13
Reviewed	SAW	20/08/13
Approved	SAW	20/08/13

Verify all dimensions on site before commencing work. Prioritise figured dimensions over scaling. Refer all discrepancies to Spiire. This document and the copyright in this document remain the property of Spiire New Zealand Ltd. The contents of this document may not be reproduced either in whole or in part by any means whatsoever without the prior written consent of Spiire New Zealand Ltd.

Client
Absolutely Positively Wellington City Council
Me Heke Ki Pōneke

Project Title
**THE PARADE
CYCLE LANES**

Sheet Title
Kerbside Cycle Lanes
The Parade - Mersey Street

spiire
Innovation in Infrastructure
Level 13, Kordia House
109-125 Willis Street
PO Box 6643
Wellington 6141
New Zealand
+64 4 384 2029
spiire.co.nz

Scale (A3 Original) 1:500 (A1 1:250)



Project No	Sheet	Revision
706970	P34	H