

PROPOSED TRAFFIC RESOLUTION

File Ref: 8/30/50

Reference Number: TR40-14

Location: Bolton Street/Panama Street - Wellington Central

Proposal: Diplomatic Parking, Residents Parking, Metered Parking

Information: Council officers proposed that the diplomatic parking arrangement in Bolton Street be altered due to the relocation of Chilean Embassy and future development in this area.

Diplomatic parking provided for overseas diplomats under international protocols with spaces located in the vicinity of consular officers. As consulates move, the diplomatic parking spaces are relocated.

In addition to removing the 6 surplus diplomatic car parks on Bolton Street, we propose to convert the existing 3 Residents parks and 3 Coupon parks to 12 Metered Parking (P120 Maximum, Monday to Thursday 8:00am - 6:00pm, Friday 8:00am - 8:00pm, Saturday and Sunday 8:00 - 6:00pm.), which will be consistent with the rest of parking spaces in the lower Bolton Street.

The Ministry of Foreign Affairs and Trade has requested additional diplomatic parks be provided on Panama Street in lieu of the removal of the diplomatic parks on Bolton Street. Council and it is therefore proposed to increase the number of diplomatic car parks to 4 spaces on Panama Street.

- | | |
|---|-------------------|
| 1) Advertisement in the Dominion Post Newspaper | 22 July 2014 |
| 2) Feedback period closes. | 8 August 2014 |
| 3) Report sent to Transport & Urban Development Committee for approval. | 23 September 2014 |
| 4) Feedback may result in further consultation or amendment as appropriate. | |

PROPOSED TRAFFIC RESOLUTION

File Ref: 8/30/50

Reference Number: TR40-14

Location: Bolton Street/Panama Street - Wellington Central

Proposal: Diplomatic Parking, Residents Parking, Metered Parking

Legal Description:

Delete from Schedule B (Restricted Parking) of the Traffic Restrictions Schedule

Column One	Column Two	Column Three
Bolton Street	<i>DC, CC, FC Registered Vehicles Parking, At All Times.</i>	<i>Northwest side, following the kerb line 68.5 metres northeast of its intersection with Easdale Street (Grid Coordinates X=2658522.426508 m, Y=5990334.568742 m) and extending in a north-easterly direction for 23.5 metres.</i>
Bolton Street	<i>DC, CC, FC Registered Vehicles Parking, At All Times.</i>	<i>Southeast side, following the kerb line 89.5 metres west of its intersection with The Terrace (Grid Coordinates X=2658704.856283 m, Y=5990400.970326 m) and extending in a south-westerly direction for 10 metres.</i>
Bolton Street	<i>Resident Parking - Displaying an Authorised Resident Vehicle Parking Permit Only, Monday to Friday 8:00am - 6:00pm.</i>	<i>Northwest side, following the kerb line 92 metres northeast of its intersection with Easdale Street (Grid Coordinates X=2658522.426508 m, Y=5990334.568742 m) and extending in a north-easterly direction for 17.5 metres.</i>
Panama Street	<i>DC, CC, FC Registered Vehicles Parking, Monday to Friday 8:00am - 6:00pm.</i>	<i>Southwest side, following the kerb line 24 metres southeast of its intersection with Lambton Quay (Grid Coordinates x=1748686.3 m, y=5428227.3 m) and extending in a south-easterly direction for 9 metres. (3 angled parking spaces)</i>

PROPOSED TRAFFIC RESOLUTION

Delete from Schedule F (Metered Parking) of the Traffic Restrictions Schedule

Column One	Column Two	Column Three
Panama Street	Metered Parking, P120 Maximum, Monday to Thursday 8:00am - 6:00pm, Friday 8:00am - 8:00pm, Saturday and Sunday 8:00 - 6:00pm.	Southwest side, following the kerb line 32.5 metres southeast of its intersection with Lambton Quay (Grid coordinates x=1748686.3 m, y=5428227.3m) and extending in a south-easterly direction for 12.5 metres. (4 angle car parks)

Add to Schedule F (Metered Parking) of the Traffic Restrictions Schedule

Column One	Column Two	Column Three
Bolton Street	Metered parking, P120 Maximum, Monday to Thursday 8:00am - 6:00pm, Friday 8:00am - 8:00pm, Saturday and Sunday 8:00 - 6:00pm.	Northwest side, following the kerb line 68.5 metres northeast of its intersection with Easdale Street (Grid Coordinates X=2658522.426508 m, Y=5990334.568742 m) and extending in a north-easterly direction for 41 metres. (7 parallel parking spaces)
Bolton Street	Metered parking, P120 Maximum, Monday to Thursday 8:00am - 6:00pm, Friday 8:00am - 8:00pm, Saturday and Sunday 8:00 - 6:00pm.	Southeast side, following the kerb line 89.5 metres west of its intersection with The Terrace (Grid Coordinates X=2658704.856283 m, Y=5990400.970326 m) and extending in a south-westerly direction for 28 metres. (5 parallel parking spaces)
Panama Street	Metered Parking, P120 Maximum, Monday to Thursday 8:00am - 6:00pm, Friday 8:00am - 8:00pm, Saturday and Sunday 8:00 - 6:00pm.	Southwest side, following the kerb line 36 metres southeast of its intersection with Lambton Quay (Grid coordinates x=1748686.3 m, y=5428227.3m) and extending in a south-easterly direction for 9 metres. (3 angle car parks)

Add to Schedule B (Restricted Parking) of the Traffic Restrictions Schedule

Column One	Column Two	Column Three
Panama Street	DC, CC, FC Registered Vehicles Parking, Monday to Friday 8:00am - 6:00pm.	Southwest side, following the kerb line 24 metres southeast of its intersection with Lambton Quay (Grid Coordinates x=1748686.3 m, y=5428227.3 m) and extending in a south-easterly direction for 12 metres. (4 angled parking spaces)

PROPOSED TRAFFIC RESOLUTION



File Ref: 8/30/50

Reference Number: TR40-14

Location: Bolton Street/Panama Street - Wellington Central

Proposal: Diplomatic Parking, Residents Parking, Metered Parking

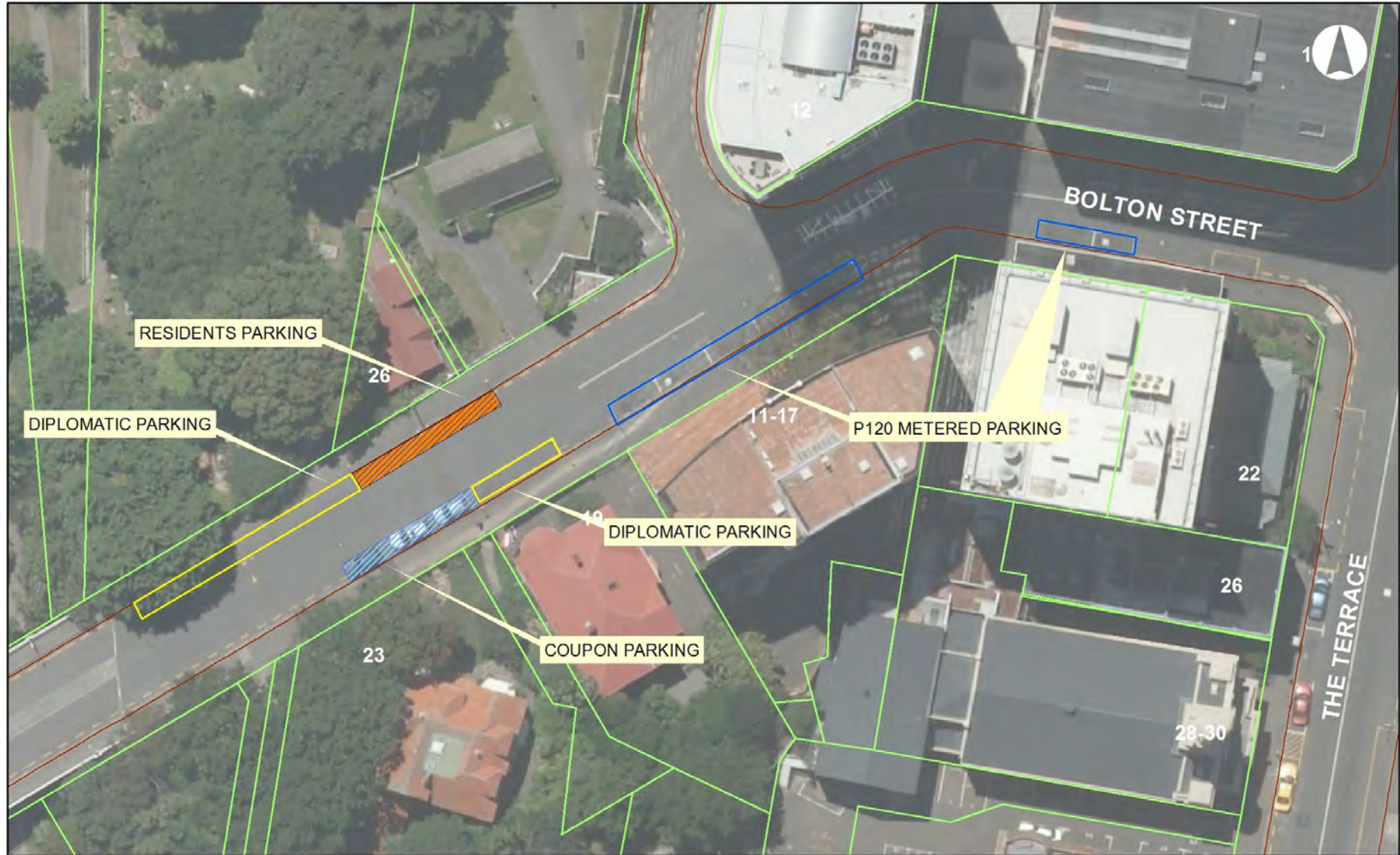
Prepared By : **Tony Zhang** (Traffic Engineer)

Approved By : **Steve Spence** (Senior Transport Planner)

Date:

Comments:

PROPOSED TRAFFIC RESOLUTION

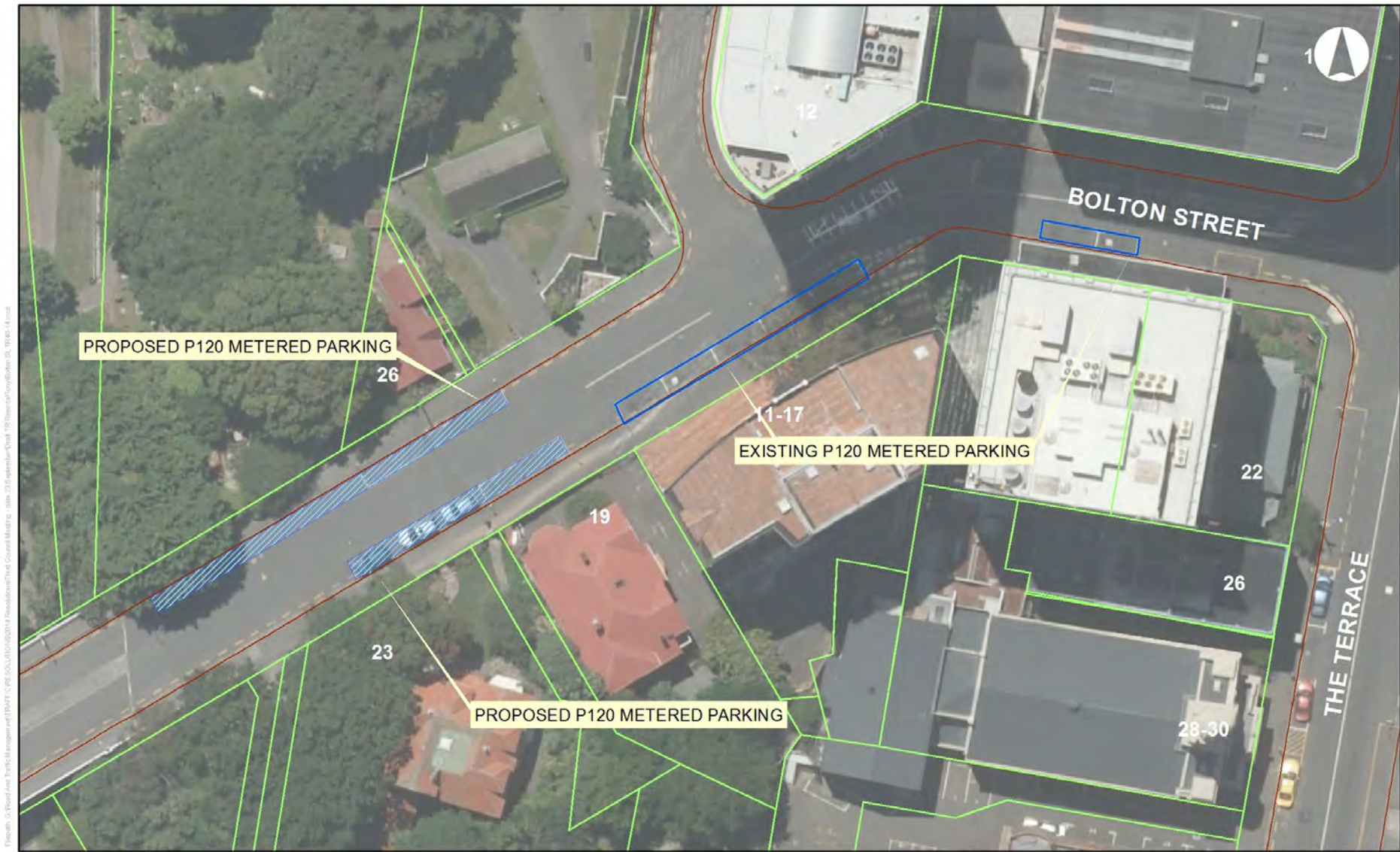


BOLTON STREET - WELLINGTON CENTRAL
EXISTING ON-STREET CAR PARKS (TR40-14)

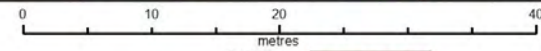
MAP PRODUCED BY:
Wellington City Council
101 Wakefield Street
WELLINGTON, NZ

ORIGINAL MAP SIZE: A3
DATE: 18/07/2014
AUTHOR: zhang3t
REFERENCE:

PROPOSED TRAFFIC RESOLUTION



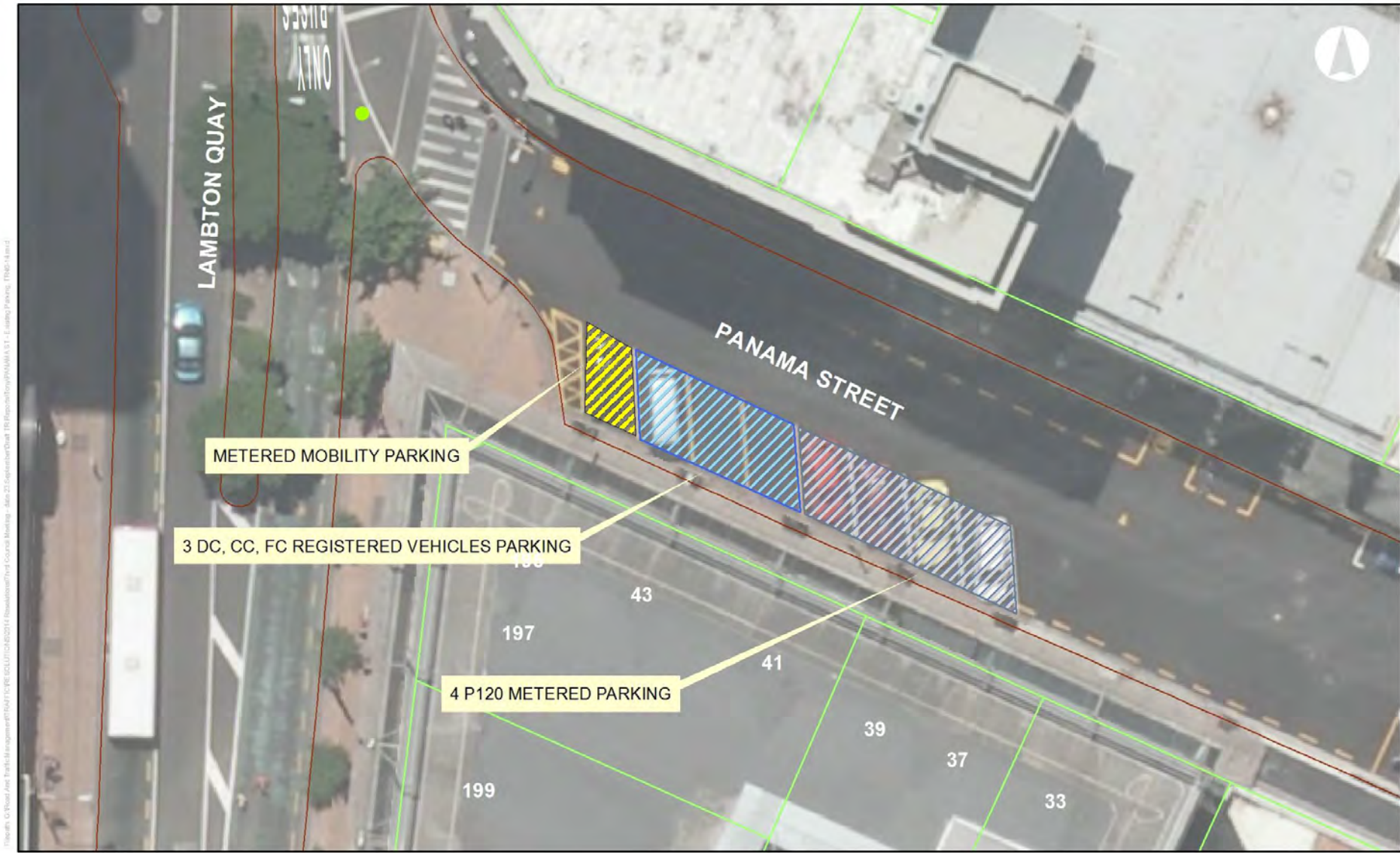
BOLTON STREET - WELLINGTON CENTRAL
PROPOSED TRAFFIC RESOLUTION (TR40-14)



MAP PRODUCED BY:
Wellington City Council
101 Wakefield Street
WELLINGTON, NZ

ORIGINAL MAP SIZE: A3
DATE: 4/06/2014
AUTHOR: zhang3t
REFERENCE:

PROPOSED TRAFFIC RESOLUTION



PANAMA STREET, WELLINGTON CENTRAL
EXISTING PARKING (TR40-14)

MAP PRODUCED BY:
Wellington City Council
101 Wakefield Street
WELLINGTON, NZ

ORIGINAL MAP SIZE: A3
DATE: 6/06/2014
AUTHOR: zhang3t
REFERENCE:

PROPOSED TRAFFIC RESOLUTION



PANAMA STREET, WELLINGTON CENTRAL
PROPOSED TRAFFIC RESOLUTION (TR40-14)

MAP PRODUCED BY:
Wellington City Council
101 Wakefield Street
WELLINGTON, NZ

ORIGINAL MAP SIZE: A3
DATE: 8/06/2014
AUTHOR: zhang3t
REFERENCE: