



SUMMARY OF TOITŪ CARBONREDUCE CERTIFICATION

WELLINGTON CITY COUNCIL

Year 3 of 3 year certificate period

Absolutely Positively
Wellington City Council
Me Heke Ki Pōneke

Wellington City Council meets the requirements of Toitū carbonreduce certification having measured its greenhouse gas emissions in accordance with ISO 14064-1:2006 and committed to managing and reducing its emissions in respect of the operational emissions of its organisation including Council Controlled Organisations that report into the council and JVs, and excluding Wellington International Airport.

Wellington City Council (Council) is the local authority of the residents and ratepayers of Wellington, the capital city of New Zealand. The activities undertaken by the Council include; water supply; waste water collection and treatment; storm water management; solid waste management; provision of transportation infrastructure and street lighting; arts and cultural facilities including libraries, museums, convention centres and a public art gallery; parks, recreation and aquatic facilities; and the provision of regulatory, community and economic development services. The Council is intent on using carbonreduce as a guide to reduce its greenhouse gas impacts.

Further information about the Council's activities, including Annual and Long Term Plans is located at www.wellington.govt.nz

This yearly inventory report forms a key performance measure for the council's climate action blueprint - Te Atakura First to Zero Carbon. The plan can be found in full at - <https://www.zerocarboncapital.nz/assets/Uploads/Te-atakura-final.pdf>

This plan was adopted in June 2019 on the same day as the Council declared a climate and ecological emergency. With this, new, more ambitious emissions reduction goals were set. carbonreduce will remain a crucial tool in the achievement of these.

Our broader climate efforts can be explored at - <http://wellington.govt.nz/services/environment-and-waste/environment/climate-change>

EMISSIONS SUMMARY ¹

Wellington City Council's emissions for this year (01 July 2019 to 30 June 2020) were 110,728.54 tCO₂e. The operational GHG emission sources included in this inventory are shown in Figure 1 below.

¹ **Disclaimer:** This Disclosure Statement is a summary of the verified information considered for certification and the certification decision. It should not be taken to represent the full submission for certification. Whilst every effort has been made to ensure that the information in this Disclosure Statement is accurate and complete, Enviro-Mark Solutions Limited (trading as Toitū

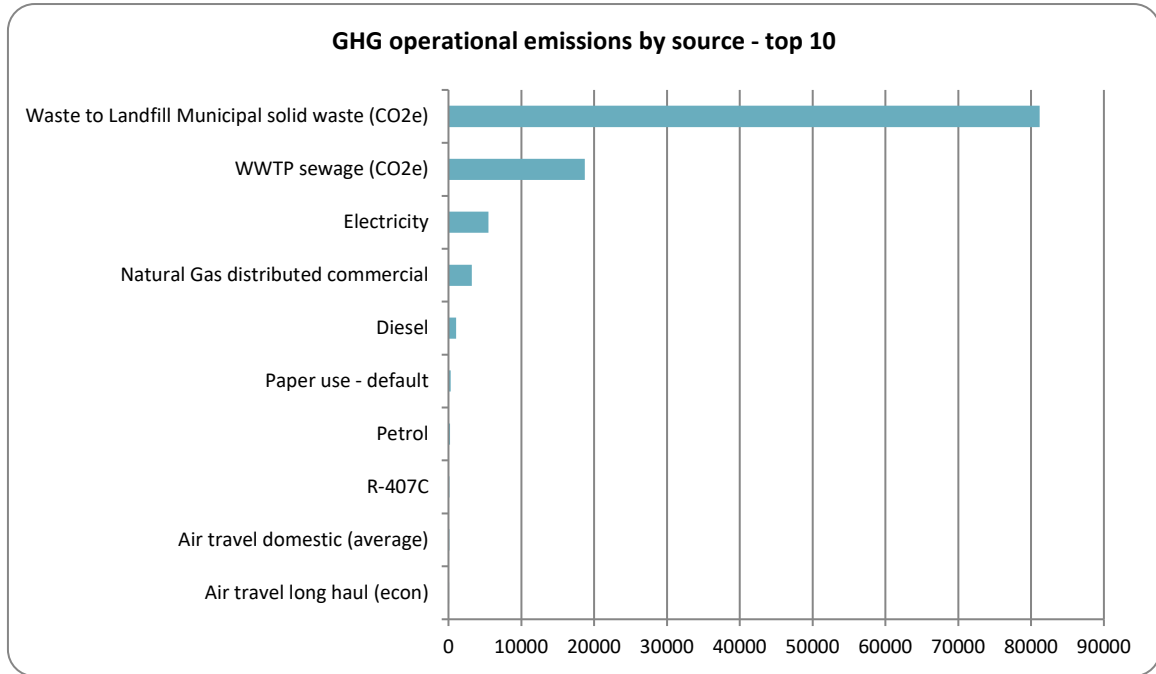


Figure 1: GHG emissions by emissions source

Emissions as tonnes of carbon dioxide equivalents (tCO₂e) for this period were:

Emissions summary by scopes			Emissions summary by scopes		
		Units			Units
Scope 1 total	103,942.22	tCO ₂ e	Scope 1 total	103,942.22	tCO ₂ e
Scope 2 total (location-based method)	2,798.05	tCO ₂ e	Scope 2 total (market-based ² method)	2,727.41	tCO ₂ e
Scope 3 (mandatory)	984.45	tCO ₂ e	Scope 3 (mandatory)	984.45	tCO ₂ e
Scope 3 (additional)	2,750.87	tCO ₂ e	Scope 3 (additional)	2,750.87	tCO ₂ e
Scope 3 (one-time)	0.00	tCO ₂ e	Scope 3 (one-time)	0.00	tCO ₂ e
Total inventory: (location-based method)	110,475.59	tCO₂e	Total inventory: (market-based method)	110,404.95	tCO₂e

EMISSIONS REDUCTIONS

To reduce its emissions, Wellington City Council has developed a GHG emissions management plan and reduction targets. Some of these plans include:

- Continued co-investment in methane capture at Southern Landfill
- Investigate alternatives for sewage sludge disposal
- Computer sleep mode software
- Incorporate electric vehicles in fleet
- Investigate fleet rationalisation (carshare)
- Ensure best-practice refrigerant management

Envirocare) does not, to the maximum extent permitted by law, give any warranty or guarantee relating to the accuracy or reliability of the information.

This is the 6th year of reporting under the Toitū carbonreduce programme. An absolute increase in Scope 1 and 2 emissions of 2,522.12 tCO₂e has occurred against base year. A reduction in emissions intensity (for Scope 1, 2 and mandatory Scope 3 emissions) of 12.63 tCO₂e/\$M has been achieved based upon a 5 year rolling average.

EMISSIONS BOUNDARIES

Business units in green are included, business units in blue are excluded.

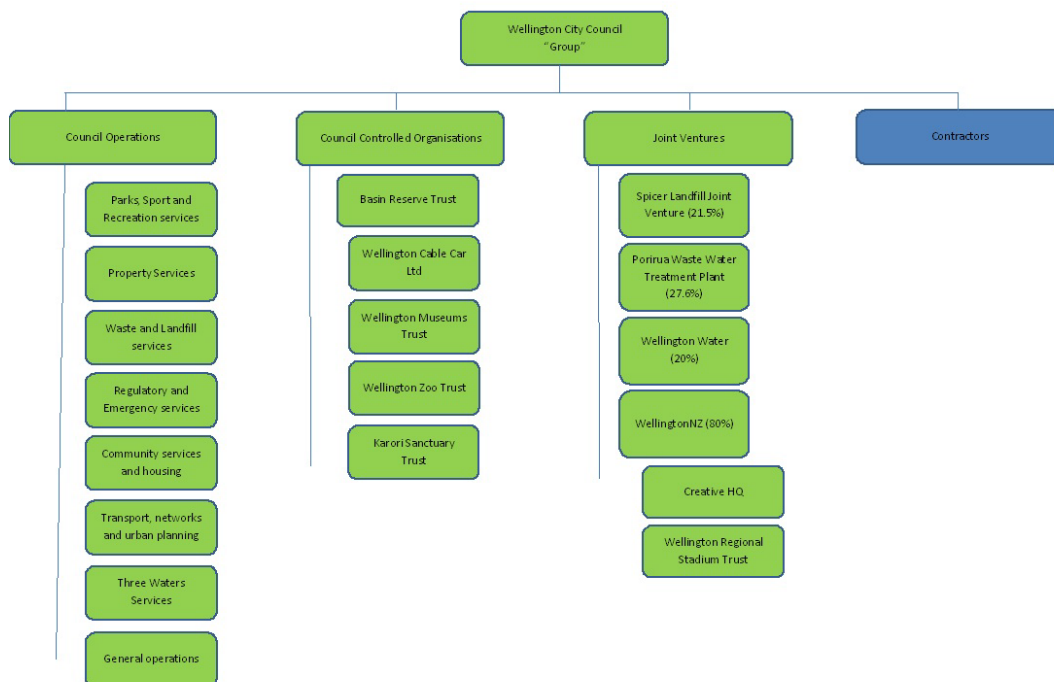


Figure 2: Organisational structure showing business units included and excluded

An equity share consolidation approach was used to account for emissions.

This is with reference to the methodology described in the GHG Protocol and ISO 14064-1:2006 standards.

The following emissions sources were excluded from the inventory for this measurement period:

- Fertilizer use by the Parks, Sport and Recreation business unit has been excluded on the basis that it has a *de minimis* contribution to greenhouse gas emissions across council. This assertion is based on estimates of annual fertilizer usage data from the Horticultural team.
- Freight and couriers deemed to be *de minimis*.

Excluded emissions do not exceed 5% of the total footprint within the organisation boundary stated.

CERTIFICATE DETAILS

Certification status – Toitū carbonreduce certified organisation

Certificate number – 2018109J, Year 3 of 3 year certificate period



Valid until – 14 December 2021

Measurement period – 01 July 2019 to 30 June 2020

Base year – 01 July 2014 to 30 June 2015

Verified by – Enviro-Mark Solutions Limited

Level of assurance – Reasonable

Data quality score – High

113 The Terrace, level 16, Wellington, 6011, New Zealand
Telephone: (+64 4) 499 4444 Email: info@wcc.govt.nz