

Absolutely Positively
Wellington City Council

Me Heke Ki Pōneke

Ordinary Meeting of Pītau Pūmanawa | Grants Subcommittee Rārangi Take | Agenda

9:30 am Rāapa, 22 Haratua 2024
9:30 am Wednesday, 22 May 2024
Ngake (16.09), Level 16, Tahiwī
113 The Terrace
Pōneke | Wellington



MEMBERSHIP

Mayor Whanau
Deputy Mayor Foon
Councillor Brown
Pouiwi Hohaia
Councillor O'Neill
Councillor Wi Neera (Chair)
Councillor Young (Deputy Chair)

Have your say!

You can make a short presentation to the Councillors, Committee members, Subcommittee members or Community Board members at this meeting. Please let us know by noon the working day before the meeting. You can do this either by phoning 04-499-4444, emailing public.participation@wcc.govt.nz, or writing to Democracy Services, Wellington City Council, PO Box 2199, Wellington, giving your name, phone number, and the issue you would like to talk about. All Council and committee meetings are livestreamed on our YouTube page. This includes any public participation at the meeting.

AREA OF FOCUS

The Pītau Pūmanawa | Grants Subcommittee is responsible for the effective allocation and monitoring of the Council's grants.

To read the full delegations of this subcommittee, please visit wellington.govt.nz/meetings.

Quorum: 4 members

TABLE OF CONTENTS

22 MAY 2024

Business	Page No.
1. Meeting Conduct	7
1.1 Karakia	7
1.2 Apologies	7
1.3 Conflict of Interest Declarations	7
1.4 Confirmation of Minutes	7
1.5 Items not on the Agenda	7
1.6 Public Participation	8
2. General Business	9
2.1 Arts and Culture Fund March 2024	9
2.2 CH Izard Bequest Recommendations 2024	29
2.3 Social and Recreation Fund extending multi-year funding to June 2025 for Vincents' Art Workshop and Wellington Timebank	37
2.4 Sportville Partnership Fund	45
2.5 Climate and Sustainability Fund- March 2024	55
2.6 Waste Minimisation Seed Fund: Organics Diversion 2024	63
2.7 Heritage Resilience and Regeneration Fund, 2023/24 Report	71
2.8 Actions Tracking and Forward Programme	85

1. Meeting Conduct

1.1 Karakia

The Chairperson will open the hui with a karakia.

Whakataka te hau ki te uru,	Cease oh winds of the west
Whakataka te hau ki te tonga.	and of the south
Kia mākinakina ki uta,	Let the bracing breezes flow,
Kia mātaratara ki tai.	over the land and the sea.
E hī ake ana te atākura.	Let the red-tipped dawn come
He tio, he huka, he hauhū.	with a sharpened edge, a touch of frost,
Tihei Mauri Ora!	a promise of a glorious day

At the appropriate time, the following karakia will be read to close the hui.

Unuhia, unuhia, unuhia ki te uru tapu nui	Draw on, draw on
Kia wātea, kia māmā, te ngākau, te tinana,	Draw on the supreme sacredness
te wairua	To clear, to free the heart, the body
I te ara takatū	and the spirit of mankind
Koia rā e Rongo, whakairia ake ki runga	Oh Rongo, above (symbol of peace)
Kia wātea, kia wātea	Let this all be done in unity
Āe rā, kua wātea!	

1.2 Apologies

The Chairperson invites notice from members of apologies, including apologies for lateness and early departure from the hui, where leave of absence has not previously been granted.

1.3 Conflict of Interest Declarations

Members are reminded of the need to be vigilant to stand aside from decision making when a conflict arises between their role as a member and any private or other external interest they might have.

1.4 Confirmation of Minutes

The minutes of the meeting held on 13 March 2024 will be put to the Pītau Pūmanawa | Grants Subcommittee for confirmation.

1.5 Items not on the Agenda

The Chairperson will give notice of items not on the agenda as follows.

Matters Requiring Urgent Attention as Determined by Resolution of the Pītau Pūmanawa | Grants Subcommittee.

The Chairperson shall state to the hui:

1. The reason why the item is not on the agenda; and
2. The reason why discussion of the item cannot be delayed until a subsequent hui.

The item may be allowed onto the agenda by resolution of the Pītau Pūmanawa | Grants Subcommittee.

Minor Matters relating to the General Business of the Pītau Pūmanawa | Grants Subcommittee.

The Chairperson shall state to the hui that the item will be discussed, but no resolution, decision, or recommendation may be made in respect of the item except to refer it to a subsequent hui of the Pītau Pūmanawa | Grants Subcommittee for further discussion.

1.6 Public Participation

A maximum of 60 minutes is set aside for public participation at the commencement of any hui of the Council or committee that is open to the public. Under Standing Order 31.2 a written, oral, or electronic application to address the hui setting forth the subject, is required to be lodged with the Chief Executive by 12.00 noon of the working day prior to the hui concerned, and subsequently approved by the Chairperson.

Requests for public participation can be sent by email to public.participation@wcc.govt.nz, by post to Democracy Services, Wellington City Council, PO Box 2199, Wellington, or by phone at 04 499 4444 and asking to speak to Democracy Services.

2. General Business

ARTS AND CULTURE FUND MARCH 2024

Kōrero taunaki | Summary of considerations

Purpose

1. This report to Pītau Pūmanawa | Grants Subcommittee makes recommendations for allocation of the Arts and Culture Fund for applications in the third funding round of 2023/24.

Strategic alignment with community wellbeing outcomes and priority areas

Aligns with the following strategies and priority areas:

Strategic alignment with priority objective areas from Long-term Plan 2021–2031

- Sustainable, natural eco city
- People friendly, compact, safe and accessible capital city
- Innovative, inclusive and creative city
- Dynamic and sustainable economy

- Functioning, resilient and reliable three waters infrastructure
- Affordable, resilient and safe place to live
- Safe, resilient and reliable core transport infrastructure network
- Fit-for-purpose community, creative and cultural spaces
- Accelerating zero-carbon and waste-free transition
- Strong partnerships with mana whenua

Relevant Previous decisions

Not applicable.

Significance

The decision is rated low significance in accordance with schedule 1 of the Council's Significance and Engagement Policy.

Financial considerations

- Nil Budgetary provision in Annual Plan / Long-term Plan Unbudgeted \$X

2. Funding for the grant programme for the Arts and Culture Fund is budgeted in the LTP.

Risk

- Low Medium High Extreme

3. Low risk – programmes and projects are proposed by legal entities who are responsible for projects and programmes and all associated risks.

Authors	Siaun Lintern, Funding Team Leader Mark Farrar, Business Performance Manager Grace Hoete, Senior Arts Advisor
Authoriser	David Ensor, Connected Communities Manager James Roberts, Chief Operating Officer

Taunakitanga | Officers' Recommendations

Officers recommend the following motion:

That the Pītau Pūmanawa | Grants Subcommittee:

- 1) Receive the information.
- 2) Note that the fund criteria have been aligned with the Council's Aho Tini 2030 Arts and Culture Strategy and recommended funding delivers to at least one of the Aho Tini priority areas.
- 3) Agree to the allocation of Arts and Culture funding for applications #1 to #34 as listed below.

- #1. Arohanui Strings-Sistema Hutt Valley- \$12,000
- #2. Baddy Productions Limited - \$5,000
- #3. Emele Ugavule under Kia Mau Festival Limited - \$9,800
- #4. Gale Force Gospel Choir Incorporated - \$2,700
- #5. Jenny McArthur under Pirate and Queen Limited - \$3,695
- #6. Joanne Marsh under BATS Theatre Limited - \$3,600
- #7. Korakora Creative Limited - \$8,750
- #8. Latin American Film Festival - \$6,500
- #9. Lilburn Residence Trust - \$6,000
- #10. Long Cloud Youth Theatre Trust - \$6,000
- #11. Motif Poetry Trust Board - \$3,765
- #12. New Zealand Asia Art And Culture Connection Limited - \$3,000
- #13. New Zealand Choral Federation Incorporated - \$2,000
- #14. New Zealand National Refugee Youth Council Incorporated - \$5,000
- #15. New Zealand String Quartet Trust - \$6,000
- #16. ORIKoL Productions Limited - \$5,000
- #17. Red Scare Theatre Trust - \$5,000
- #18. Reo Ora Limited - \$1,000
- #19. RMF Creative Limited - \$4,400
- #20. Silver Noodle Soup Film & Theatre Company Charitable Trust - \$7,500
- #21. Squash Court Arts Collective Limited - \$5,000
- #22. TAHI New Zealand Festival Of Solo Performance Limited - \$3,600
- #23. The Brothers and Sisters Collective Trust - \$2,050
- #24. The Orpheus Choir Of Wellington Incorporated - \$3,000
- #25. The StarJam Charitable Trust - \$5,000
- #26. The Theatreview Trust - \$8,000
- #27. Triplicity Productions under BATS Theatre Limited - \$4,548
- #28. Voice Arts Trust - \$14,000
- #29. Wellington Carnival Street Band under Creative Capital Arts Trust - \$5,300
- #30. Wellington Heritage Festival Trust Board - \$5,000
- #31. Wellington Puppet Festival under Vogelmorn Community Group - \$5,000
- #32. Wellington Symphonic Bands Incorporated - \$2,000
- #33. Wellington Youth Orchestra Incorporated - \$3,000
- #34. Wolfgang Creative Limited - \$4,073

Whakarāpopoto | Executive Summary

4. This report to Pītau Pūmanawa | Grants Subcommittee: makes recommendations for allocation of the Arts and Culture Fund for applications in the final funding round of 2023/24 which closed for applications in March 2024.

Takenga mai | Background

5. Council has realigned grant criteria in accordance with Aho Tini priority areas and has encouraged applicants to consider these. The Aho Tini strategy was used to realign grants to ensure Council can look at where support is needed, identify gaps and encourage diversity. Aho Tini was also used to realign the multi-year funding programme, which provides three-year funding to 20 organisations totalling \$1,898,692 (in 2023/24).
6. Eligible organisations for this multi-year funding are:
 - those that have a demonstrable level of maturity,
 - have a sustained track record artistically and financially,
 - a visible and engaged audience and/or community base,
 - considered sustainable in the long term,
 - operating at scale and need certainty of funding for more than one year,
 - must deliver to all four of the Aho Tini priority areas.
7. The current list of multi-year contracts can be accessed here [current-contracts.pdf \(wellington.govt.nz\)](#). This funding is increased annually with a contribution of an inflationary increase.
8. In addition to multi-year funding, Council funds short-term projects through the Arts and Culture Fund. This fund is open to any arts and culture project that benefit the people of Wellington and can demonstrate alignment to particular priorities within the Aho Tini strategy.
9. This is the third (of three) funding rounds for the 2023/24 financial year. The fund comprises \$602,733 in total, for the year, this is made up of:
 - \$302,733 as a general Arts and Culture Fund
 - \$200,000 to support independent artists and groups who meet the criteria for this category (see criteria attachment);
 - \$100,000 from operational budgets which can also be allocated to professional performing arts practitioners to top up any high-quality professional productions that have a confirmed performance outcome in Wellington City.
10. Funding available to allocate for the remainder of this financial year is \$176,281.

Priorities

11. Priorities for this fund are set out in Aho Tini and are listed along with information about other funding allocated through the Arts and Culture Fund on the Council website; [Arts and Culture Fund - Community support - Wellington City Council](#).

Kōrerorero | Discussion

12. 56 applications were received in this round requesting a total of \$448,174 compared to 49 in the last funding round.
13. Within these applications, the predominant genre was multi-artform (including film) which accounted for 13 of the applications, with 12 music and theatre-based applications and four applications arts festival, craft and visual arts. The remaining applications were a mix of other genres: Ngā toi Māori, literature, dance and Pacific Arts
14. Officers recommend the Grants Subcommittee approve a total of \$176,281 (this being the total available to be allocated) to 34 organisations/entities. This funding is from the Arts and Culture Fund, Independent Artists and Professional Performing Arts funding pools (Table 1).
15. To be eligible for funding, applicants had to have projects that delivered to at least one of the Aho Tini criteria. In this funding round, across all applications:
 - 20 of the applications aligned strongly to the Aho Tangata strand of Aho Tini (increasing the diversity of our communities and encouraging access, inclusiveness and participation in arts and culture)
 - 29 of the applications aligned strongly to the Aho Mahi strand (supporting career pathways for artists)
 - Three of the applications aligned strongly to the Aho Whenua strand (our places, spaces, venues its users and wider community)
 - Four applications aligned with the Aho Hononga strand (partnerships with mana whenua or Māori connections with mana whenua or Māori).
16. Tables 1 and 2 indicates how the recommended applications deliver to the four Aho Tini policy areas, what artform the applications were categorised as and through which funding programme they were supported.

Table 1- Arts and Culture Fund August 2023 Recommended for funding

#	Applicant	Project	Requested	Comments	Recommended	Funding Stream	Aho Tini	Artform
1	Arohanui Strings-Sistema Hutt Valley	AS Foundation Week - Celebration and Community Engagement	\$12,000	To support professional musicians in schools. The annual programme has grown to include over 50+ musicians, and more schools.	\$12,000	Arts and Culture	Tangata / Mahi	Music
2	Baddy Productions Limited	Last Orders	\$5,000	To support Wellington Film sector in their Creative Professional Development, applicants come with strong sector support.	\$5,000	Independent Arts	Mahi	Multi-artform (including film)
3	Emele Ugavule under Kia Mau Festival Limited	Toe Fai!	\$9,982	Funding to support the unique skills and worldviews of Tokelau in the the re-development of Theatre production Toe Fai, this will also nurture the local Tokelauan culture, community and youth.	\$9,800	Independent Arts	Tangata / Mahi	Pacific arts
4	Gale Force Gospel Choir Incorporated	Spring Concert	\$2,700	To support acappella concert singing featuring songs from the African-American gospel tradition.	\$2,700	Independent Arts	Tangata	Music
5	Jenny McArthur under Pirate and Queen Limited	The Ghosts' Soiree	\$4,500	To support partial funding towards performers fee for an immersive new cabaret production for "ghosts" of Wellington.	\$3,695	Independent Arts	Tangata	Theatre

**PĪTAU PŪMANAWA | GRANTS
SUBCOMMITTEE
22 MAY 2024**

6	Joanne Marsh under BATS Theatre Limited	Hamlet - One hour. Three actors. Denmark will never be the same	\$9,950	Contribution toward actors fees, for a multimedia adaptation of Shakespeare's Hamlet by cast and crew from the disabled/neurodivergent community.	\$3,600	Independent Arts	Tangata	Theatre
7	Korakora Creative Limited	Kupu Whenua Words of the Land (Phase 2)	\$12,750	To support the delivery of Kupu Whenua ,Toi Māori bilingual literary art project, producing a body of toi kupu.	\$8,750	Independent Arts	Hononga	Literature
8	Latin American Film Festival	Latin America and Spain Film Festival	\$6,500	To support the delivery of the Wellington component of Latin American and Spanish Film Festival supported by the Latin American embassies in the sharing of their culture with NZ.	\$6,500	Arts and Culture	Tangata	Multi-artform (including film)
9	Lilburn Residence Trust	Sustaining the Lilburn Residence as a Creative and Heritage site	\$6,000	To support the continued cost of Lilburn House and its long running Artists Composer-in-Residence programme.	\$6,000	Arts and Culture	Mahi / Whenua	Music
10	Long Cloud Youth Theatre Trust	You Have 2 Laugh or You'll Cry	\$10,950	To support professional youth devised theatre that explores joy as an act of resistance in the everyday. Due to the financial pressure of the round recommending partial funding.	\$6,000	Arts and Culture	Tangata / Mahi	Theatre

11	Motif Poetry Trust Board	Wellington Slam Season 2024	\$3,765	To support a series of poetry slam events and the development of local writers and audiences in Wellington.	\$3,765	Arts and Culture	Tangata	Literature
12	New Zealand Asia Art And Culture Connection Limited	8th Wellington Children's Art Exhibition	\$3,000	To support the Children's Art Exhibition & workshops for the 30th anniversary of the Wellington-Sakai sister city relationship.	\$3,000	Arts and Culture	Tangata / Mahi	Craft/object art
13	New Zealand Choral Federation Incorporated	The Big Sing - Wellington Secondary Schools Choir Festival	\$2,500	Support for two day choral festival for Wellington Secondary School Choirs, further support has been approved via the WCC venue subsidy for the MFC.	\$2,000	Arts and Culture	Tangata	Music
14	New Zealand National Refugee Youth Council Incorporated	White Rabbit Red Rabbit	\$10,979	Contribution towards supporting the development of emerging actors in a production of a theatre experiment with Wellington refugee youth actors, challenging stereotypes.	\$5,000	Arts and Culture	Tangata / Mahi	Theatre
15	New Zealand String Quartet Trust	The Racket Lounge	\$6,000	To support a new music performance programme for emerging musicians in a professional capacity and a concert series at Bedlam & Squalor produced by Toi Māori intern.	\$6,000	Arts and Culture	Mahi / Tangata / Hononga	Music

**PĪTAU PŪMANAWA | GRANTS
SUBCOMMITTEE
22 MAY 2024**

16	ORIKoL Productions Limited	Afrika Bazaar	\$15,000	To partially support the celebration of African music, arts, culture and unity, further support has been granted through the WCC venue subsidy.	\$5,000	Arts and Culture	Tangata / Mahi	Arts festival
17	Red Scare Theatre Trust	When We Were Us	\$11,000	A contribution towards performers fees in the premiere of a new musical from Aotearoa New Zealand	\$5,000	Arts and Culture	Mahi	Theatre
18	Reo Ora Limited	Kiwi-Panda Te Ao Māori Book and App Launch	\$3,500	To partially fund the Kaumatua, mātauranga and manaakitanga costs in the presentation of a new book and app about Tikanga Māori practices and build strong relations between Māori and China.	\$1,000	Arts and Culture	Hononga	Multi-artform (including film)
19	RMF Creative Limited	Puli and The Tiger	\$5,000	To support partial funding of a Tamil-language short film about connection across generations in an immigrant family in Wellington.	\$4,400	Independent Arts	Tangata	Multi-artform (including film)
20	Silver Noodle Soup Film & Theatre Company Charitable Trust	Silver Noodle Drama Classes	\$12,210	To partially fund the drama workshops by professional practitioners to young people with accessibility needs.	\$7,500	Arts and Culture	Tangata / Mahi	Multi-artform (including film)

21	Squash Court Arts Collective Limited	Boys and Girls at the School Silent Disco	\$9,289	Contribution towards the performers fees for the premier presentation of an award winning original New Zealand play.	\$5,000	Independent Arts	Mahi	Theatre
22	TAHI New Zealand Festival Of Solo Performance Limited	TAHI Festival Activations 2024	\$10,800	To support a contribution towards the Hatch Alumni event, Officers will meet with applicant to assist in the connection of Festivals.	\$3,600	Professional Performing Arts Fund	Tangata / Mahi	Theatre
23	The Brothers and Sisters Collective Trust	Classes for professionals	\$2,050	To support the creative professional development of choreographers to maintain and upskill their artform.	\$2,050	Independent Arts	Mahi	Dance
24	The Orpheus Choir Of Wellington Incorporated	The Creation	\$3,000	To support emerging singers with the opportunity to perform alongside international acclaimed practitioners in a concert presentation of a choral masterpiece.	\$3,000	Arts and Culture	Tangata / Mahi	Music
25	The StarJam Charitable Trust	StarJam Wellington Programme 2024	\$20,000	To contribute towards the nationwide charity that provides 77 weekly music-based workshops for youth with disabilities.	\$5,000	Arts and Culture	Tangata	Music
26	The Theatreview Trust	To retain the services of the Theatre Editor - Wellington	\$8,000	To support Theatre reviewing, and the online review platform of the collating of future archiving resources for the creative sector and education sector.	\$8,000	Arts and Culture	Mahi	Theatre

**PĪTAU PŪMANAWA | GRANTS
SUBCOMMITTEE
22 MAY 2024**

27	Triplicity Productions under BATS Theatre Limited	Femme Natale - The Queen Years	\$4,548	To support an adult sketch comedy show about parents and what really happens after 'Happily Ever After'.	\$4,548	Independent Arts	Tangata	Multi-artform (including film)
28	Voice Arts Trust	Core Support and Project Funding	\$14,000	To support the full programme of professional practitioners in drama-based classes that supports the third-generation population to participate in the arts.	\$14,000	Arts and Culture	Tangata	Theatre
29	Wellington Carnival Street Band under Creative Capital Arts Trust	Whanaungatanga	\$5,300	To support the street band that performs to a diverse range of audiences, venues and events focusing on whanaungatanga.	\$5,300	Arts and Culture	Whenua	Music
30	Wellington Heritage Festival Trust Board	Wellington Heritage Festival 2024	\$10,000	Contribution to region-wide heritage festival of community-run events celebrating our people, places, & stories. Contingent on draft programme and inclusion of diverse local events.	\$5,000	Arts and Culture	Whenua	Arts festival
31	Wellington Puppet Festival under Vogelmorn Community Group	The Wellington Puppetry Festival	\$8,566	To partial Fund a unique Festival that will connect, share knowledge, and enrich the puppetry culture of Wellington.	\$5,000	Independent Arts	Tangata / Mahi	Theatre

32	Wellington Symphonic Bands Incorporated	WSB Conductor Fee support	\$4,000	Contribution to conductors fees, in order to partial fund Pōneke's amateur musicians access to the social and well-being benefits of community music.	\$2,000	Arts and Culture	Tangata / Mahi	Music
33	Wellington Youth Orchestra Incorporated	Wellington Youth Orchestra Project Two Concert	\$3,000	To support the Wellington Youth Orchestras second concert at St Andrews.	\$3,000	Arts and Culture	Tangata / Mahi	Music
34	Wolfgang Creative Limited	Bottled Demons	\$4,073	Development season for a new theatre work.	\$4,073	Arts and Culture	Mahi	Theatre
Total					\$176,281			

Table 2- Arts and Culture Fund August 2023- Recommendations to decline,

Table 2 - Arts and Culture Fund, March 2024 - Recommended Decline						
#	Applicant	Project	Requested	Comments	Aho Tini	Artform
35	Ahi Raranga Tapui Limited	Ahipara	\$10,000	Tie and Kai event incorporating raranga and kai, recommend applicant develop the project further with a tikanga advisor.	Hononga / Tangata / Mahi	Ngā toi Māori
36	All Day Breakfast Limited	Satellites archive	\$15,500	To add 25 Wellington-based artists to the online archive of Aotearoa Asian arts. Officers are supportive of the project, due to financial pressure it is considered a lower priority for the fund.	Tangata	Multi-artform (including film)
37	Amigos Peer Support Group under Wellington After-Care Association	Amigos Arts & Crafts Supplies	\$1,421	Primary aim of the projects is around mental health support, rather than supporting the arts community, or increasing access to the arts via programmes or projects delivered by arts practitioners. Can reapply to the Social and Recreation Fund later in the year.	Tangata	Craft/object art

38	Colossal Productions Limited	SQUID Creation Space 2024	\$6,570	Offer of creative space for local performing artists to develop, create and connect. Officers will work with applicant to connect with existing circus hub community in the city.	Mahi	Multi-artform (including film)
39	Ekta NZ Incorporated	Phulkari Exhibition	\$7,150	Requesting support for an exhibition of contemporary Punjabi weaving art, further detail is required in the application. Officers to work with applicant to develop future application with clarification around artists, venue and audience.	Tangata	Craft/object art
40	Ekta NZ Incorporated	Stories of the Indian Diaspora	\$13,700	Funding for a photographic exhibition of Indian diaspora in Malaysia and South Africa. Application requires further detail, Officers will work with applicant to develop future applications.	Tangata	Visual Arts
41	Every Body Is a Treasure	Mindful Stabbing - Workshop	\$3,000	Application for youth workshops merging well-being with needle felting, application has limited artistic merit and is primarily therapeutic focused.	Mahi	Craft/object art
42	Every Body Is a Treasure	Finding Venus Experience - (Film - Exhibition - Workshop)	\$5,500	Project is a female photographic therapeutic programme, 300 voluntary models and fee is for photographer, considered a lower priority for this fund.	Tangata / Mahi	Multi-artform (including film)

PĪTAU PŪMANAWA | GRANTS
SUBCOMMITTEE
22 MAY 2024

43	Every Body Is a Treasure	Create Happy Young Artists Wananga	\$12,690	Further development of the programme including cultural advisor is required for the development of wananga with Wellington schools including queer messaging from tangata whenua artists.	Tangata / Mahi / Hononga	Visual Arts
44	Flair N Fun Limited	Asian Arts & Cultural Musical Night	\$20,000	Funding for Panjabi Tongan Musical Fusion Concert. application requires further information, Officers to offer support for any future applications.	Tangata	Arts festival
45	For The Love Of Productions Limited	Live and Local	\$14,000	Application for videos of local bands in Wellington locations, application requires further detail of the need within the local music community.	Mahi	Multi-artform (including film)
46	Girls Rock Aotearoa Incorporated	To The Front Pōneke 2024	\$6,000	Applicant has received funding for this project through CCS fund with same application.	Tangata / Mahi	Music
47	Indian Ink Theatre Company Limited	Indian Ink presents 'Guru of Chai' at Hannah Playhouse	\$7,500	Applicant is seeking Hannah Playhouse costs, these are already heavily subsidised through WCC fund.	Tangata	Theatre

48	Lemuria Limited	Ringatoi Wānanga Series (CBD) Working Title	\$6,600	Application for Māori and Pasifika led programme of ngā toi Māori wānanga, whilst we support the intention further detail in the programming with list of confirmed practioners would assist this project further.	Hononga / Mahi / Tangata	Ngā toi Māori
49	Number 44 Films under Wellington Independent Arts Trust	The Octopus Chef 훈 셰프	\$14,260	The application for the documentary exploration of the intricate ecosystem that sustains the Wellington hospitality industry is a lower prior for the fund	Mahi	Visual Arts
50	QCT	QC Academy	\$5,750	We support the applicant and have recognised QCT in the last five funding rounds. The budget requires further work and alignment with activities listed, the majority of costs are for fundraising which is ineligible. Officers will work with applicants to assist in seeking external sponsors and funders.	Mahi	Music
51	Sailboat Films	Snap Shot Shorts Season 1 Finale Event	\$7,000	Application for the screening of local short film series, high venue costs for presentation of film, this is a low priority for this funding round. Officers to assist applicant in seeking a more affordable venue.	Mahi	Multi-artform (including film)

PĪTAU PŪMANAWA | GRANTS
SUBCOMMITTEE
22 MAY 2024

52	Show Me Shorts Film Festival Trust Board under Independent Arts Trust	Show Me Shorts Film Festival 2024 in Wellington	\$5,000	The presentation of the Show Me Shorts Film Festival, is considered a lower priority for this round due to financial pressure on the fund.	Mahi	Multi-artform (including film)
53	Strange Gate Limited	"metramorphosis: mirror dance"	\$6,800	Application for the interactive animated experience exploring duality, mutuality, and metaphors of the maternal body. this is considered a lower priority due to the financial pressure of the round.	Mahi	Multi-artform (including film)
54	Tender Press under Pirate and Queen Limited	Publication of two books	\$9,400	Application for publication (editing, designing, printing and launch) of two new books from Wellington authors this is considered a lower priority due to the financial pressure of the round.	Tangata	Literature
55	The Wellington Japan Festival Trust	Japan Festival Wellington 2024	\$9,000	Application fits better with Community Event Sponsorship, Officers will make contact and assist in the transfer to the City Events team.	Tangata	Arts festival
56	Wellington After-Care Association Incorporated	One on One Photography and Tactile Sculpture Creation and Exhibition.	\$1,419	Further information is required from this application as to the connection to arts and culture. Officers will work with the group and assist in future applications.	Tangata	Visual Arts

Kōwhiringa | Options

20. The options available to the committee are to approve the recommendations for funding or not approve the recommendations for funding.

Whai whakaaro ki ngā whakataunga | Considerations for decision-making

Alignment with Council's strategies and policies

21. All assessment and funding recommendations align with criteria and priority areas for the Arts and Culture Fund. The criteria and priority areas reflect relevant strategies and were updated in December 2021 to deliver on the outcomes articulated in 'Aho-Tini 2030 Arts, Culture and Creativity Strategy Wellington'.

Engagement and Consultation

22. Low significance.

Māori Impact Statement

23. The assessment revealed that 20 applications strongly aligned with the Aho Tangata strand, emphasising community diversity and access to arts and culture. Additionally, 29 applications supported career pathways for artists (Aho Mahi), while three focused on the significance of venues and community impact (Aho Whenua). Four applications emphasised partnerships with mana whenua or Māori connections (Aho Hononga). These findings demonstrate the breadth of engagement and commitment across the applications, reflecting a comprehensive approach to advancing Aho Tini objectives

Financial implications

24. The Long-term Plan makes provision for community grants in several activity areas including Arts and Culture and the Professional Performing Arts Fund.

Legal considerations

25. No legal risks.

Risks and mitigations

26. Low risk – programmes and projects are proposed by legal entities who are responsible for projects and programmes and all associated risks.
27. There is a risk that funding is not used for the purpose intended which can be mitigated by providing funding in staged payments, or at the completion of projects. Funded organisations can also be asked to provide financial statements and provide reports at the end and during the life cycle of the projects funded.

Disability and accessibility impact

28. A range of projects are supported through the Arts and Culture Fund including through multi-year funding for the Arts for All programme delivered alongside arts organisations through Arts Access Aotearoa.

Climate Change impact and considerations

29. No implications.

Communications Plan

30. Grantees and applicants are provided with email communication following the decision, for those granted funding. This includes guidance on how the funding should be acknowledged by the organisation and how Council can share information through communication channels.

Health and Safety Impact considered

31. Not applicable.

Ngā mahinga e whai ake nei | Next actions

32. Following the decision of Grants subcommittee, applicants will be notified and provided with feedback and relevant documentation for those approved

Attachments

Nil

CH IZARD BEQUEST RECOMMENDATIONS 2024

Kōrero taunaki | Summary of considerations

Purpose

1. This report to Pītau Pūmanawa | Grants Subcommittee seeks approval for recommendations to be made to the trustees of the C.H. Izard Bequest.

Strategic alignment with community wellbeing outcomes and priority areas

Aligns with the following strategies and priority areas:

- | | |
|--|---|
| Strategic alignment with priority objective areas from Long-term Plan 2021–2031 | <input type="checkbox"/> Sustainable, natural eco city
<input checked="" type="checkbox"/> People friendly, compact, safe and accessible capital city
<input type="checkbox"/> Innovative, inclusive and creative city
<input type="checkbox"/> Dynamic and sustainable economy |
| | <input type="checkbox"/> Functioning, resilient and reliable three waters infrastructure
<input checked="" type="checkbox"/> Affordable, resilient and safe place to live
<input type="checkbox"/> Safe, resilient and reliable core transport infrastructure network
<input type="checkbox"/> Fit-for-purpose community, creative and cultural spaces
<input type="checkbox"/> Accelerating zero-carbon and waste-free transition
<input type="checkbox"/> Strong partnerships with mana whenua |

Relevant Previous decisions

Outline relevant previous decisions that pertain to the decision being considered in this paper.

Significance

The decision is rated low significance in accordance with schedule 1 of the Council's Significance and Engagement Policy.

Financial considerations

- | | | |
|---|--|---|
| <input checked="" type="checkbox"/> Nil | <input type="checkbox"/> Budgetary provision in Annual Plan / Long-term Plan | <input type="checkbox"/> Unbudgeted \$X |
|---|--|---|

2. This report seeks confirmation of the recommendations Council will make to the trustees of the C.H. Izard Bequest.

Risk

- | | | | |
|---|---------------------------------|-------------------------------|----------------------------------|
| <input checked="" type="checkbox"/> Low | <input type="checkbox"/> Medium | <input type="checkbox"/> High | <input type="checkbox"/> Extreme |
|---|---------------------------------|-------------------------------|----------------------------------|

3. Low risk, donations based on approved recommendations are made by the Trustees.

Authors	Siaun Lintern, Funding Team Leader Mark Farrar, Business Performance Manager
Authoriser	David Ensor, Connected Communities Manager James Roberts, Chief Operating Officer

Taunakitanga | Officers' Recommendations

Officers recommend the following motion:

That the Pītau Pūmanawa | Grants Subcommittee:

- 1) Receive the information
- 2) Agree to the following recommendations numbered #1 to #9 to be made to the trustees of the C.H. Izard Bequest
 - #1. Arohanui Strings-Sistema Hutt Valley - \$2,150
 - #2. Graeme Dingle Foundation Wellington - \$4,000
 - #3. IHC New Zealand Incorporated - \$2,000
 - #4. Presbyterian Support Central - \$1,000
 - #5. Samaritans of Wellington Incorporated - \$3,000
 - #6. Suzanne Aubert Compassion Centre Wellington Limited - \$2,000
 - #7. The CanInspire Charitable Trust - \$2,000
 - #8. Vincents' Arts Workshop Incorporated - \$1,850
 - #9. Endo Warriors Aotearoa - \$2,000

Whakarāpopoto | Executive Summary

4. The C.H. Izard Bequest has been in operation since 1925. The capital is managed by trustees Macalister Mazengarb Solicitors and an annual allocation made for distribution.

Takenga mai | Background

5. Charles Hayward Izard served on the Wellington City Council and then as a Member of Parliament. He gifted Izard Park in memory of his son C.B.Izard – the park is adjacent to Otari Wilton Bush and bears the family name. The Trust is managed in 'perpetuity' with income used to make donations.
6. The trustees have advised that up to \$20,000 is available for allocation to suitable projects recommended to them by Pītau Pūmanawa, the Grants Subcommittee. This is not too dissimilar from the amount of \$20,000 distributed in 2023.

Kōrerorero | Discussion

7. The C.H. Izard Bequest has specific criteria in addition to the Council's general Social and Recreation Fund criteria, although less emphasis on Council's strategic priorities is required.
8. To be eligible, projects must:
 - be for educational purposes or to support needy, disadvantaged groups in the community
 - be an application from a group or organisation (individuals are not eligible)
 - be within the Wellington city rate-paying area.

9. Criteria for this fund are that:
- Projects must make a positive contribution to achieving the Council's strategic outcomes
 - Projects are Wellington based and primarily benefit Wellington city
 - The applicant is a legally constituted community group or organisation, not an individual or individuals
 - Projects must be for a charitable and/or educational purpose. Charitable and/or educational purposes must fit the 'charitable mould' and may or may not have an educational purpose. Charitable is interpreted as "needy" in the social welfare sense, not simply because the organisation has a charitable purpose.
10. Original information provided through online applications has been made available to Councillors. In making assessments Officers look at past funding allocations and other support projects and organisations have received from Wellington City Council and other community funders.
11. We received 17 applications which were eligible for support through the CH IZARD Bequest, seeking a total of \$103,095. These are listed in Table 1 and 2 below.
12. Officers are recommending that nine organisations be recommended for support with a total of \$20,000.

Table 1- C.H. IZARD Bequest 2023 Recommended

#	Applicant	Project	Requested	Comments	Recommended
1	Arohanui Strings-Sistema Hutt Valley	After-school (Brass) programme	\$6,000	Good fit with bequest criteria, providing opportunities for young people take part in music programme in lower decile schools in Wellington.	\$2,150
2	Graeme Dingle Foundation Wellington	Empowering our young rangatahi at Tawa College	\$4,000	Good fit with bequest criteria, supporting work being done with Tawa College students via the Stars and Career Navigation programmes.	\$4,000
3	IHC New Zealand Incorporated	2024 National Kapa Haka Festival	\$10,000	Contribution to costs of local groups of IHC clients taking part in national kapa haka festival being held in Wellington.	\$2,000

**PĪTAU PŪMANAWA | GRANTS
SUBCOMMITTEE
22 MAY 2024**

4	Presbyterian Support Central	Diversion Therapy Equipment	\$5,000	Request to provide contribution to equipment to run the music therapy classes at the Enliven retirement village in Johnsonville.	\$1,000
5	Samaritans of Wellington Incorporated	Cost of New Volunteer Training Programme	\$9,812	Contribution to education and training package for staff and volunteers staffing Samaritans helpline in Wellington.	\$3,000
6	Suzanne Aubert Compassion Centre Wellington Limited	Volunteer Coordinator Salary Support	\$6,000	Contribution to operational costs for Soup Kitchen to support their training for volunteers.	\$2,000
7	The CanInspire Charitable Trust	CanBead Wellington	\$3,000	Contribution towards training workshops run with Cancer Society which are free of charge for all people experiencing illness, trauma or personal loss.	\$2,000
8	Vincent's Arts Workshop Incorporated	Tuesday Workshops at Vincents	\$4,000	Support for art materials and tuition fees for accessible workshops held weekly on a Tuesday, supporting users that require extra assistance.	\$1,850
9	Endo Warriors Aotearoa	Comprehensive Pain Empowerment Program: Integrating Holistic Approaches for Endometriosis-Related Chronic Pain Management	\$2,081	Support for an open access series of educational community workshops in Newtown to help people affected learn techniques to manage pain and live with this condition.	\$2,000
				Total	\$20,000

Table 2- C.H. Iazard Bequest 2023 Recommended Decline

#	Applicant	Project	Requested	Comments
10	Age Concern Wellington Region Trust	Making Connections Day	\$3,500	Seeking funds to support activities during Seniors week which is supported by WCC, Officers will work with Age Concern to support activities.
11	Aphasia New Zealand (AphasiaNZ) Charitable Trust	Support for Community Aphasia Adviser services	\$3,000	Seeking support for operational costs towards Wellington visiting services, lower priority alongside other projects that more strongly deliver to criteria.
12	Blue Light Ventures Incorporated	50 Wellington youth gain their Learner's Licence	\$12,500	Seeking funds to cover operational costs to run a Learners Licence programme, lower priority given options available to access similar programmes in the community, including via MSD.
13	Momentum Charitable Trust	Life and financial skills programmes at Wellington Region Probation Centres.	\$9,328	Request to provide operational costs to run life skills and financial programmes at the Newtown Probation office, lower priority given local services providing similar services are available.
14	ReBicycle Charitable Trust	Bike parts and tools for mechanical workshop	\$5,000	Requested costs towards bike parts and help with maintenance of bikes. This organisation are well supported through a range of Council funding streams.
15	The Wellington Boys and Girls Institute Incorporated	Global Village	\$6,874	Requested costs towards the cost to run an ethnic communities programme tailored for youth of ethnic communities, lower priority given limited funds available and noting that the organisation have funding in place from Council.

16	House of Science NZ Charitable Trust	Educating young people about renewable energy sources	\$3,000	Request to support new copies of bilingual science resource kits for primary and intermediate schools. This request was considered a lower priority given limited funds available.
17	New Zealand Collective Of Abused In State Care Charitable Trust	Whare Tapu	\$10,000	Requesting funds to cover costs to deliver a series of wānanga for survivors of abuse in state care. Council Officers will work with the Trust to help identify alternative funding sources support the work of the Trust in the city.

Kōwhiringa | Options

13. The Committee's options are to either support the recommendations for funding or amend the funding recommendations to the Trust.

Whai whakaaro ki ngā whakataunga | Considerations for decision-making

Alignment with Council's strategies and policies

14. The Trust criteria are well aligned to aspects of the Council's social wellbeing framework.

Engagement and Consultation

15. The fund is promoted through a range of WCC channels.

Māori Impact Statement

16. Applicants are asked to provide information for those projects which propose to deliver to Māori or have elements that aim to deliver programmes which increase participation. For example application 3 references the organisations kaupapa Māori programme for their clients with intellectual disabilities.

Financial implications

17. The C.H. Iazard Bequest is managed by trustees Macalister Mazengarb Solicitors and an annual allocation made for distribution by the trustees. Administration and the application process via the Connected Communities team is done alongside other funding programmes.

Legal considerations

18. None.

Risks and mitigations

19. Low risk.

Disability and accessibility impact

20. None.

Climate Change impact and considerations

21. None.

Communications Plan

22. The donations will be promoted through our WCC promotional channels and website.

Health and Safety Impact considered

23. Organisations delivering projects supported through donations by the Trustees are responsible for the health and safety aspects of their projects.

Ngā mahinga e whai ake nei | Next actions

24. Once the recommendations are approved, officers will inform the Trustees who, assuming they are comfortable with the recommendations, will then make arrangement for payments to be made from the Trust.

Attachments

Nil

SOCIAL AND RECREATION FUND EXTENDING MULTI-YEAR FUNDING TO JUNE 2025 FOR VINCENTS' ART WORKSHOP AND WELLINGTON TIMEBANK

Kōrero taunaki | Summary of considerations

Purpose

1. This report to Pītau Pūmanawa | Grants Subcommittee recommends allocating multi-year contract funding for a further year for Vincents Art Workshop Incorporated and Wellington Timebank, a programme run by the Newtown Cultural and Community Centre 2009 Trust.

Strategic alignment with community wellbeing outcomes and priority areas

Aligns with the following strategies and priority areas:

Strategic alignment with priority objective areas from Long-term Plan 2021–2031

- Sustainable, natural eco city
- People friendly, compact, safe and accessible capital city
- Innovative, inclusive and creative city
- Dynamic and sustainable economy
- Functioning, resilient and reliable three waters infrastructure
- Affordable, resilient and safe place to live
- Safe, resilient and reliable core transport infrastructure network
- Fit-for-purpose community, creative and cultural spaces
- Accelerating zero-carbon and waste-free transition
- Strong partnerships with mana whenua

Relevant Previous decisions

Not applicable.

Significance

The decision is **rated low significance** in accordance with schedule 1 of the Council's Significance and Engagement Policy.

Financial considerations

- Nil | Budgetary provision in Annual Plan / Long-term Plan | Unbudgeted \$X

Risk

- Low | Medium | High | Extreme

Authors	Siaun Lintern, Funding Team Leader Mark Farrar, Business Performance Manager Vondy Thornton, Empowering Communities Manager
Authoriser	David Ensor, Connected Communities Manager James Roberts, Chief Operating Officer

Taunakitanga | Officers' Recommendations

Officers recommend the following motion

That Pītau Pūmanawa | Grants Subcommittee:

- 1) Receive the information.
- 2) Note that these current funding contracts are out of sync with other multiyear contracts, this report seeks to correct alignment to support more informed and equitable decision making.
- 3) Recommend that Pītau Pūmanawa | Grants subcommittee approve the recommendation to allocate funding from the FY2024/25 Social and Recreation Fund, subject to the funding being approved via the 2024-2034 Long Term Plan for #1 and #2 listed below.
 - #1. Newtown Community & Cultural Centre 2009 Trust; \$33,792
 - #2. Vincents' Art Workshop Incorporated; \$90,000

Whakarāpopoto | Executive Summary

2. The Council provides grants to assist community groups and organisations to undertake projects and deliver services that meet community needs.
3. A range of organisations are funded through multi-year contracts. Currently these two funding contracts are not aligned with the timing of the other ongoing funding contracts, both were approved with one year funding for reasons which are set out in this paper. This report seeks to align both with other multi-year contracts, resulting in all multi-year contracts ending within the same funding cycle. This will assist with better service outcome comparison to inform any ongoing funding decisions by Council.

Takenga mai | Background

4. Grants and funding are included in the Long-term and Annual Plans to provide an appropriate mechanism for the Council to respond to community groups and organisations undertaking projects or delivering services that:
 - Meet a need identified by the community
 - Align with Council's strategic goals and outcomes
 - Rely to some extent on participation and engagement by community organisations.
5. Multi-year funding is one of the funding instruments that the Council uses to support the community sector and organisations. These multi-year contracts (generally three years) are monitored through specialist relationship managers within the Connected Communities business unit.
6. This decision is being sought in anticipation of the 2024-2034 Long Term Plan (LTP) adoption and sufficient funding being included within the LTP within the overall Social and Recreation Fund to meet this and other multi-year funding commitments (included in the current draft LTP being consulted on).

Kōrerorero | Discussion

7. A range of organisations are funded through multi-year contracts. Current ongoing multi-year funding contracts are available on the Council website [current-contracts.pdf](https://www.wellington.govt.nz/current-contracts.pdf) ([wellington.govt.nz](https://www.wellington.govt.nz)).
8. The Council Relationship Management Framework makes provision for additional monitoring for organisations working with vulnerable clients (providing social services, case work and/or working with children and young people). The Relationship Framework also sets out requirements for onsite visits and frequency of providing reporting and meetings with Council Officers.
9. These recommendation for funding is for 12 months from 1 July 2024 and will align the funding term with all other multi-year funding. A summary of applications and Officers recommendations are included in Table 1 below.

Table 1

#	Applicant	Amt requested	Comments	Recom mended
1	Newtown Community & Cultural Centre 2009 Trust	\$33,792	Operational support for Wellington Timebank, a project run by Newtown CCC. Timebank maintains a diverse membership of over 700 individuals and organisations, delivering a service consistently aligned with Council Social Wellbeing Framework and other priorities. Recommendation is aligned with previous annual level of funding. Funding for 12 months to June 30 2025	\$33,792
2	Vincents' Art Workshop Incorporated	\$90,000	Operational support for Vincents Art Workshop who work with people with disabilities and mental health issues. Vincents' provides important creative and social opportunities through programmes which respect and reflect tikanga and te reo Māori. Recommended funding to support the workshop, opening for a minimum of 32 hours each week with an average of 30 people attending each session. Recommendation is aligned with previous annual level of funding. Funding for 12 months to June 30 2025	\$90,000

Newtown Community & Cultural Centre 2009 Trust- Wellington Timebank

10. Timebanking is a community building tool using time as the basis for social exchange. An hour of help given by a member earns one 'time credit' which can then be used for one hour of help from any member. Timebankers can then use their credit for services and support on the Timebank platform.
11. Current annual contract funding for 2022/23 for Timebank is \$33,000.
12. Other WCC funding in 2023/24 for Newtown Community and Cultural Centre 2009 Inc (NCCC) 2022-25 and Smart Newtown 2022-25 is \$222,720. NCCC operate from the refurbished Council owned Newtown Community and Cultural Centre and also administer the Daniel Street Hall, with Smart Newtown operating from the building adjacent to Newtown Library, Newtown CAB also operate from NCCC.
13. Wellington Timebank works across the city with 775 individual members and 121 organisations (mostly NGOs, and grassroots groups). The model is focussed on reciprocity means that Wellington Timebank plays a different and distinctive role from volunteer organisations with members and organisations giving and receiving help, and forming social connections in the process.
14. NCCC supports this initiative providing office space and support through the Council funded community centre. Timebank has a strong and stable base of volunteers. Council has supported Timebank since 2014/15 and this request is to support the main expenses of a coordinators salary.
15. Timebank was granted one year of funding in May 2023 on the basis that a new co-ordinator had been appointed with a plan to improve service reach and impact, delivering on value proposition for city-wide service. The recommendation to grant for one year was to provide time to monitor progress alongside a shift to new software.
16. Officers recommendation is to extend current funding for an additional year at the same level of funding as 2023/24 with an inflationary increase, as requested by the organisation at \$33,792. This will align funding with the timing of all social wellbeing multi-year funding contracts.

Vincents Art Workshop

17. Vincents' Art Workshop Te Whare Mahi Toi has a strong presence in Wellington and operate from Willis Street Village. The need for the service has been clearly identified since being established in 1985 following the deinstitutionalization of psychiatric hospitals when many of the former patients wanted to continue with visually creative self-expression. Vincents have demonstrated that this can lead to improved mental health outcomes.
18. Vincents provide an important community service in the Wellington CBD and is the oldest 'Creative Space' in New Zealand providing access to arts and craft facilities, skilled tuition, and materials within a supportive environment. Vincents welcomes all, people with disabilities, those moving into the community from institutions, unemployed, people on low incomes and anyone at all from the wider community, an average of 30+ people use the workshop every day.

19. Current funding in 2023/24 is \$90,000, in addition a Council provides \$10,000 annual support for their rental costs via the Betty Campbell Fund and one off grants for projects through other funds.
20. Vincents were granted one year of WCC funding in May 2023 on the basis that there had been significant staffing and governance changes within the organisation, because of the nature of their work with vulnerable clients the funding is subject to high level monitoring through the Council monitoring framework
21. During the past year, Vincents have implemented a plan for lifting income and keeping costs under control, while maintaining services. The level of funding recommended is consistent with recent years which was increased to support organisation through period of significant change and to respond to additional demand for their services. During this time the organisation have strengthened their governance arrangements and their senior staff have had support from Arts Access Aotearoa and developed a client-centred services policy (part of their Social Services Level 4 accreditation).
22. Officers recommendation is to extend current funding for an additional year at the same level of funding as 2023/24, as requested at \$90,000. This will align funding with the timing of all social wellbeing multi-year funding contracts.
23. Council officers intend to review the Social and Recreation fund criteria, priorities and focus during 2024/25.
24. Officers will then work with and seek approval from Pītau Pūmanawa /Grants subcommittee on any changes which will in turn inform future decision making in May 2025 for all multi-year funding contracts which would be within the same funding cycle.

Kōwhiringa | Options

25. The options available to the committee are to approve this recommendation for funding or not approve the recommendations for funding. If approved the funding would be subject to approval of funding within the Long Term Plan (for 2024- 2034).

Whai whakaaro ki ngā whakataunga | Considerations for decision-making

Alignment with Council's strategies and policies

26. Council funds have been created to assist community initiatives in line with Council strategy. Council officers engage and consult widely with a range of groups and organisations before funding applications are made and throughout the assessment process.

Engagement and Consultation

27. There are no Engagement and Consultation issues for Council.

Implications for Māori

28. Within the funding applications both organisations being recommended funding provide information about how their practice demonstrates a commitment to Te Tiriti. Vincents referencing Whaikaha - Ministry of Disabled Persons core principles and aspects of the way the organisation Centre have a Tiriti o Waitangi Policy which the Timebank project follows, this includes access to NCCC kaumatua for advice, training, Te Reo Māori learning as well as proactively encouraging offers and requests that improve understanding and connection to Te Ao Māori. Financial implications

Availability of funding to support this service from 1 July 2024 (via the Social and Recreation Fund) is subject to availability of funding through the 2024-2034 Long-Term Plan, which will be adopted by Council in June 2024. Current funding (2023/24) and recommended funding (2024/25) is within forecasted budget of the fourth year of the current LTP. Legal considerations

work with artists and staff, including commitment. Newtown Cultural and Community

29. No known implications.

Risks and mitigations

30. Low risk – programmes and projects are proposed by legal entities who are responsible for projects and programmes and all associated risks. For funding contracts, detailed agreements are used which set out roles, responsibilities and requirements for reporting, especially where an organisation fits within the requirements of our Relationship Management Framework to be monitored at a high level, Vincents fall within this category.
31. Where there is a risk that funding is not used for the purpose intended which can be mitigated by providing funding in staged payments, or at the completion of projects. Funded organisations can also be asked to provide financial statements and provide reports at the end and during the life cycle of the projects funded.

Disability and accessibility impact

32. These services take into consideration the needs of clients which shapes the types of services and programmes delivered and which local partner agencies are involved.

Climate Change impact and considerations

33. Not applicable

Communications Plan

34. Officers will inform the applicant once decisions are made and will work with the Council Engagement and Consultation team to promote agreed funding once the Long Term Plan is confirmed by Council.

Health and Safety Impact considered

35. Organisations are asked, where relevant, to provide evidence of vetting and checking staff and volunteers; policies detailing process to vet qualifications; description of

supervision policies for legal and clinical roles and Police vetting process when roles require this. Police vetting should include all roles that involve children, social workers, health workers and board members.

Ngā mahinga e whai ake nei | Next actions

36. Following the decision of Pītau Pūmanawa | Grants subcommittee and the available funding is confirmed through the Long Term Plan Officers will work with these organisations to negotiate reporting outcomes, determine a payment schedule and assign a key relationship manager.

Attachments

Nil

SPORTVILLE PARTNERSHIP FUND

Kōrero taunaki | Summary of considerations

Purpose

1. The purpose of this paper is to recommend funding to the total of \$388,000 be granted out of the Sportville Partnership Fund.

Strategic alignment with community wellbeing outcomes and priority areas

Aligns with the following strategies and priority areas:

- Sustainable, natural eco city
 - People friendly, compact, safe and accessible capital city
 - Innovative, inclusive and creative city
 - Dynamic and sustainable economy
- Strategic alignment with priority objective areas from Long-term Plan 2021–2031**
- Functioning, resilient and reliable three waters infrastructure
 - Affordable, resilient and safe place to live
 - Safe, resilient and reliable core transport infrastructure network
 - Fit-for-purpose community, creative and cultural spaces
 - Accelerating zero-carbon and waste-free transition
 - Strong partnerships with mana whenua

Relevant Previous decisions

Outline relevant previous decisions that pertain to the decision being considered in this paper.

Kōrau Tōtōpū | Long-term Plan, Finance, and Performance Committee Wednesday, 31 Haratua May 2023

Significance

The decision is Choose an item. in accordance with schedule 1 of the Council’s Significance and Engagement Policy.

Financial considerations

- Nil Budgetary provision in Annual Plan / Long-term Plan Unbudgeted \$X

2. \$540,000 is allocated within the 2023/24 financial year, through the Sportville Partnership Fund within Social and Recreation Fund. \$152,000 has been allocated.

Risk

- Low Medium High Extreme

3. The overall risk of funding these projects is low. Not funding these projects will present a major risk to the provision of sport being played in the city.

Author	Sanjay Patel, Sports and Clubs Partnership Lead
Authoriser	Paul Andrews, Manager Parks, Sports & Rec James Roberts, Chief Operating Officer

Taunakitanga | Officers' Recommendations

Officers recommend the following motion:

That the Pītau Pūmanawa | Grants Subcommittee:

- 1) Receive the information
- 2) Agree to allocate \$150,000 to St Patricks College, Wellington towards the renewal of the artificial turf.
- 3) Agree to allocate \$150,000 to Wellington Netball Centre Incorporated towards the replacement of their roof.
- 4) Agree to allocate \$88,000 to Wellington North Badminton Association Incorporated towards the replacement of their roof.

Whakarāpopoto | Executive Summary

4. The purpose of this report is to recommend funding of \$150,000 to St Patricks College, Wellington, \$150,000 to the Wellington Netball Centre, and \$88,000 to Wellington North Badminton Centre from the sportville partnership fund.
5. The fund was established to support sports facility projects that are aimed at multi-purpose that have a significant impact on the region's sporting landscape.
6. St Patrick's College, Wellington artificial turf is at the end of its useful life and requires renewal. The turf is extremely well used and plays a significant role in the sports field network and school environment. The turf is one of two school and council partnerships which are seen as an exemplary model across the country.
7. Wellington Netball Centre's Pavilion roof requires replacing. The pavilion plays a pivotal role in Netball, serving the adjacent courts which are the major outdoor center for the region. It also hosts Softball Wellington's offices and is used for many sporting events and community use.
8. Wellington North Badminton Association building requires major roof repairs. The centre is one of the two regional Badminton facilities in Wellington with extremely high use through all hours of the day by providing for community use and multiple sporting codes.

Takenga mai | Background

9. The Sportville Feasibility Fund (\$40,000 per year) and Sportville Partnership Fund (\$500,000 per year) were established to support sport facility projects in Wellington City. These funds are to be allocated in the 2023/24 financial year.
10. The Sportville Feasibility Fund aims to support projects in their developmental phase and acknowledges that projects may require the development of feasibility studies, needs assessments, business cases, planning (for example, developing constitutions and financial systems) and resource consent studies, and other information.
11. The Sportville Partnership Fund is available to assist with the design and construction stage of projects that are deemed feasible.
12. Priority is given to the development of well-located, multi-purpose sport hubs and facilities of regional or national significance.

13. \$152,000 has previously been allocated within the 2023/24 financial year. This includes \$150,000 towards the Sport Fee and Charges review and \$2,000 to Wellington North Badminton.
14. Through this fund Council has supported projects such as the Renouf Tennis Centre capital upgrades, Wellington College Turf renewal, condition assessments and maintenance plans.
15. All three organisations meet the criteria for Sportville Partnership Fund (appendix 1). Applications and supporting documents can be viewed by elected members via the Councils internal grants management system.

St Patricks College Wellington

16. In 2012, Wellington City Council and the St Patrick's College Wellington Board of Proprietors (the College) agreed to a partnership deed to develop an artificial sports field on the College's grounds, in return for community use periods.
17. The Council initially funded 50% of the costs towards constructing the artificial sports field, up to a maximum of \$800,000 (plus GST).
18. The Council exercised its right of extension to extend the Primary Deed for a further term of 10 years from 20 June 2022 to 19 June 2032. At the time of the extension, Council and the College negotiated adjusted community use hours to better reflect the needs of both parties.
19. During the day, the field plays a critical component in the delivery of our Physical Education programme for students in Years 9 – 13.
20. The expected life of an artificial turf is 10 years and the field is now due for renewal to ensure it meets the IRB and FIFA standards.
21. In February 2024, the College formally requested funding of \$250,000 from Council towards the \$960,000 project. The school will use reserves to fund the project.

Netball Wellington Centre Incorporated (NWC)

22. NWC has been based at Hataitai Park since 1971 and has over 7000 members
23. It is the regional body administering Netball in Wellington and is affiliated to Netball Wellington.
24. NWC lease an area of land located at Hataitai Park measuring approximately 411.4m² and being part of the Wellington Town Belt. Wellington Softball Association subleases Office space in the building which they use to administer their sport from. A new lease for a term of 10 + 10 was granted in July 2023.
25. NWC owns the building which is adjacent to the Netball, Tennis and sand courts which Council manages and maintains.
26. In November 2022, as part of Te Awe Māpara – Community Facility Plan, Council commissioned an independent visual assessment of the building. The roof was highlighted as 'in need of repair/renewal'.
27. In 2022, Council completed the construction of the sand court, directly to the west of the building and is utilised by Volleyball and Handball. Both of these organisations have been working closely with WNC to utilise storage and access to the pavilion, changerooms and amenities.

28. NWC has completed a significant number of upgrades to the pavilion ensuring it is safe and accessible to the community. More recently they have replaced their windows at a cost of around 90k.
29. The total cost of the roof project is \$250,000. NWC does not yet have the full amount of reserves to fund the entire project. They will seek external grants and donations to complete their project.

Wellington North Badminton Association Incorporated (WNBA)

30. WNBA holds a 1479m² ground lease for the stadium at Taylor Park in Tawa situated on Recreation Reserve Land. The lease commenced in 2009 and was renewed for a further 10 years in 2019.
31. A sub-lease is held with both Johnsonville Mall Sports World Limited (pro shop) and Tawa Tae Kwon Do Club who have a dedicated space within the building.
32. WNBA is a New Zealand tier 1 badminton association and features six international-standard courts, changing rooms, a Pro Shop, and conference facilities.
33. Membership of active playing members is approximately 2850, a significant number for a facility of its size.
34. They have introduced an online booking system that allows players to book and play 24/7 at available times allowing a greater increase in use.
35. WBNA hosts major tournaments such as North Island age group championships and multiple regional events. The organisation has also recently worked with the neighbouring Tennis and Squash Clubs to create a “Racketlon” tournament.
36. The facility also has two well-used and maintained conference rooms which is utilised by community groups and organisations. WBNA has regularly maintained and kept the entire facility with approximately 85k being invested over the past three years
37. They have around 10 affiliated clubs under their umbrella who utilise their facilities and offerings. More recently WNBA has set up its own branch of Pickleball which has regular fully booked allocation times.
38. The total cost of the project is \$187,000. WNBA does not yet have the full amount of reserves to fund the entire project. Whilst a full re-roof is not required, there are significant issues that require work. The solution they have found will provide another 10 years of life to the roof. They will seek external grants and donations to complete their project.

Kōrerorero | Discussion

39. All three organisations meet the criteria for Sportville Partnership Fund (appendix 1). Applications and supporting documents can be viewed by elected members via the Councils internal grants management system.

St Patricks College Wellington

40. This is one of two artificial turf partnerships we have with schools. The other is Wellington College. Both partnerships are used as best practice models for school and council partnerships across the country.

41. The turf has performed very well over the years and represents an important asset within the regional sports field network. As an artificial turf, its utilisation is far more likely in marginal or bad weather conditions (than a natural grass surface) meaning that both games and trainings are very likely to proceed notwithstanding inclement weather.
42. The agreed split of College-only and Community Use periods has also worked well, with no significant issues having arisen.
43. The Council exercised its right of extension to extend the Primary Deed for a further term of 10 years from 20 June 2022 to 19 June 2032, therefore providing access to the community until the end of this deed.

Netball Wellington Centre Incorporated (NWC)

44. NWC pavilion is located adjacent to the recently refurbished Hataitai Outdoor Netball and Tennis Courts and sand Court. There are 13 Netball Courts, 14 Tennis courts, and one sand court, in which the pavilion serves as the venue to accommodate these participants, providing amenities, change rooms, a viewing area, meeting rooms, and storage.
45. NWC pavilion is also home to the Wellington Softball Association head offices where three administrators are located.
46. Whilst the organisation does not have the full amount of funds to complete its project, securing council funding serves as a foundational step in the broader fundraising endeavor. Council's endorsement signifies community backing and validates the project's significance. This initial financial support establishes credibility, enhancing the organisation's appeal to external funders such as gaming trusts and sponsors.

Wellington North Badminton Association Incorporated (WNBA)

47. WNBA centre is located Taylor Park in Tawa, between both the off-leach dog park and Tennis courts. The association has continuously maintained the building, whilst accommodating for many different sporting codes and community groups.
48. The total cost of the project is \$181,000. This report recommends a total of \$88,000 towards the project.
49. Whilst the organisation does not have the full amount of funds to complete its project, securing council funding serves as a foundational step in the broader fundraising endeavor. Council's endorsement signifies community backing and validates the project's significance. This initial financial support establishes credibility, enhancing the organisation's appeal to external funders

Kōwhiringa | Options

50. St Patricks College
 - a) Approve \$150,000 of funding for artificial turf renewal for St Patricks College, Wellington, or
 - b) Do not approve the funding for artificial turf renewal for St Patricks College, Wellington.
51. Wellington Netball Centre Inc
 - a) Approve \$150,000 of funding for roof renewal for Wellington Netball Centre Incorporated, or

- b) Do not approve the funding for roof renewal for Wellington Netball Centre Incorporated.

52. Wellington North Badminton Centre

- a) Approve funding of \$88,000 for roof repairs for Wellington North Badminton Centre, or
- b) Do not approve the funding for roof renewal for Wellington North Badminton Centre.

Whai whakaaro ki ngā whakataunga | Considerations for decision-making

Alignment with Council's strategies and policies

- 53. Councils, Te Awe Māpara - Community Facility Plan 2023 (the plan) community facilities are well-positioned now and for the future. It guides the Council's provision and decision-making regarding community facilities over the next 30 years.
- 54. An action item included in the plan concerning Hataitai Park and Community Centre lists the following 'Encourage the owners of facilities located on Hataitai Park and at the Hataitai Community Centre site to complete a master plan/feasibility study that responds to the needs assessments already completed. This should consider opportunities to develop collaboration, address fit-for-purpose / condition issues, increase the use and maximise the benefits of facilities.
- 55. Whilst this items timing is considered as medium and to commence an investigation in years 7 to 10, repairs and ongoing maintenance are essential to complete to maintain the current network.
- 56. In regards to Tawa facility provision an action of the plan states "Undertake a suburb-wide needs assessment and feasibility study across Tawa to consider optimal provision and maximise the benefits of facilities". This is considered a short term priority.
- 57. Te Whai Oranga Pōneke – Open Space and Recreation Strategy (the strategy) provides an overarching framework and strategic direction for Wellington City Council to manage and develop public open space, recreation facilities and recreation programmes and services over the next 30 years
- 58. Both the plan and strategy highlight the need to form partnerships with other organisations to provide community facilities where there are aligned outcomes and a joint facility need and specifically mentions sporting groups and schools. Both also have action items for Council to continue to partner with these organisations.

Engagement and Consultation

- 59. Officers have regular engagement with WBNA and WNBA given they sit within our ground lease portfolio. Regular reporting and meetings occur on an annual basis, with any works to their facilities being approved by Officers in the first instance.
- 60. With the recent renewal of the deed of use for the artificial sport field at SPC, the need to renew was highlighted. Officers are in weekly contact with SPC as this field serves a high need within our network of sport fields.

61. All three organisation projects are for renewals, therefore wider community engagement is not deemed necessary, outside of communicated works and affected groups.

Māori Impact Statement

62. Wellington Netball Centre is located in an of cultural significance to Taranaki Whānui as identified in the District Plan, being Te Ranga a Hiwi precinct along the Hataitai Town Belt ridgeline, near Hataitai Park and Kilbirnie Tennis Club

However, there are no specified sites of significance in the immediate vicinity of this building. At the time of lease renewal for WNC, there was no interest regarding the lease.

Financial implications

63. \$540,000 is allocated within the 2023/24 financial year, through the Sportsville Partnership Fund within Social and Recreation Fund.
64. \$150,000 was allocated towards the sport fees and charges review.
65. \$2,000 was allocated to Badminton Wellington towards their condition report.

Legal considerations

66. All development is consistent with the Reserves Act 1977, Wellington Town Belt Act 2016, Town Belt Management Plan and Council's Leases Policy.

Risks and mitigations

67. Whilst there is minimal risk to Council funding the projects, there is a significant risk of the projects not being funded or completed.
68. Our sports fields and indoor court network are close to capacity. Losing either the WNBA Stadium or artificial turf out of the region's sporting infrastructure will have a detrimental effect on access to facilities in the city.
69. With the turf renewal we will coordinate the timing with SPC as Alex Moore Park artificial is also due for renewal in 2024/25. By ensuring these are scheduled at different times this will mitigate any major loss of sport being able to be played.

Disability and accessibility impact

70. Both the WNC and WNBA have accessible ground floors which amenities and changerooms are provided for. There is limited access to the second story of each floor as they are only accessible by stairs where the conference and canteen rooms are located.

Climate Change impact and considerations

71. The re-use and/or disposal of the old artificial turf will be managed in accordance with best practice environmental guidelines.

Communications Plan

72. Officers will work with each of the respective organisation to ensure any disruption to sport and the general public is communicated.

Health and Safety Impact considered

73. Health and Safety plans will be developed for each of the individual projects and will be managed by the respective organisation as they are responsible for the assets that require works.
74. Council officers will work to advise the general public and booking holders who are affected.

Ngā mahinga e whai ake nei | Next actions

75. Negotiate funding agreements with each organisation, draft and execute agreements.

Attachments

Attachment 1. [Sportsville Partnership Fund Criteria](#)  

Page 53

Sportsville Partnership Fund criteria

- 1) Projects must be Wellington-based and mainly benefit the people of Wellington City.
- 2) The project should show evidence of community support, collaboration, and building partnerships with other organisations, and:
 - a) demonstrate that there is community need for the facility. The feasibility study must include a comprehensive needs assessment
 - b) show alignment with Council service levels and provision (for sport and recreation facilities), and have support from regional and national sporting bodies such as Sport Wellington and Sport New Zealand
 - c) demonstrate that the facility is identified as a major sport and recreation hub and is located in Wellington city.
- 3) Applicants must demonstrate that there are no existing facilities, or existing facilities are aging, unsustainable (no longer fit for purpose) and in need of replacement, and:
 - a) that the new facility or partnership will improve and rationalise the sporting and recreation facilities in the area and region and generally support outdoor multipurpose sports use. It will improve community involvement and promote health and physical activity within the local and wider community.
- 4) Applicants will show evidence that the project can be partly self-funded. There needs to be over 50% funding that is independent from Council's contribution for the design and construction stage (this is a guideline only and not an indication of the amount of funding the Council will provide).
- 5) Applicants must be a legally constituted not-for-profit community group, trust or organisation, such as Incorporated Society or Charitable Trust, and financially sound.
- 6) Applicants will show evidence of good financial management and organisational practices - for example, clear and detailed planning and reporting processes, or (for newly established groups/trust/organisations) evidence to show that processes are in place to support ongoing financial management. This information should be part of a Business Plan.
- 7) Applicants cannot be individuals, commercial, or 'for profit' organisations.
- 8) These funds will not support retrospective funding applications, debt funding, or operation and/or maintenance costs.

CLIMATE AND SUSTAINABILITY FUND MARCH 2024

Kōrero taunaki | Summary of considerations

Purpose

1. This report to Pītau Pūmanawa | Grants Subcommittee seeks approval of grants from this fund, an initiative of Te Atakura – First to Zero. The Fund supports communities and businesses in Wellington City to undertake climate action initiatives that reduce, or support the reduction of, gross carbon emissions.

Strategic alignment with community wellbeing outcomes and priority areas

Aligns with the following strategies and priority areas:

- Sustainable, natural eco city
- People friendly, compact, safe and accessible capital city
- Innovative, inclusive and creative city
- Dynamic and sustainable economy
- Functioning, resilient and reliable three waters infrastructure
- Affordable, resilient and safe place to live
- Safe, resilient and reliable core transport infrastructure network
- Fit-for-purpose community, creative and cultural spaces
- Accelerating zero-carbon and waste-free transition
- Strong partnerships with mana whenua

Strategic alignment with priority objective areas from Long-term Plan 2021–2031

Relevant Previous decisions

Criteria for this fund were approved at the meeting of Kāwai Whakatipu | Grants Subcommittee on 1 December 2021

Significance

The decision is **rated low significance** in accordance with schedule 1 of the Council's Significance and Engagement Policy.

Financial considerations

- Nil Budgetary provision in Annual Plan / Long-term Plan Unbudgeted \$X

Risk

- Low Medium High Extreme

Authors	Jamuna Rotstein, Principal Advisor, Climate Change Adaptation Raven Maeder, Community & Funding Advisor Mark Farrar, Business Performance Manager
Authoriser	Alison Howard, Manager Climate Change Response Liam Hodgetts, Chief Planning Officer

Taunakitanga | Officers' Recommendations

Officers recommend the following motion

That Pītau Pūmanawa | Grants Subcommittee:

- 1) Receive the information.
- 2) Agree to approve applications as listed below
 - #1 Creative HQ Limited - \$11,244
 - #2 Kaicycle Incorporated - \$20,000
 - #3 Mechanical Tempest Incorporated – \$5,733
 - #4 ReBicycle Charitable Trust - \$20,000
 - #5 Voices of Aroha - \$20,000

Whakarāpopoto | Executive Summary

2. The Climate and Sustainability Fund (the Fund) is an initiative of Te Atakura – First to Zero. The intention of the Fund is to support communities and businesses in Wellington City to undertake climate action initiatives that reduce, and/or support the reduction of, gross carbon emissions.
3. A total of six applications were received in this funding round which closed for applications on 28 March, the second and final round of the 2023-24 financial year, requesting a total of \$143,034.
4. In this round there is \$78,573 remaining of the \$250,000 available to allocate through this fund per financial year. Officers recommend allocating \$76,977 of this across five applications.
5. In the current round we set a priority for projects that are Māori-led and projects that show strong greenhouse gas emission reduction potential in the near term. These are priority areas for the Fund that have been underfunded to date. All applications have been assessed against the fund's criteria of climate action impact, deliverability and demonstrated equitable outcomes in relation to access to climate change information and action across communities.

Takenga mai | Background

6. The purpose of this fund is two-fold:
 - To support initiatives that will create a culture of climate action, demonstrate scalable action, or reach a wide audience; and
 - to support projects that reduce carbon emissions in Wellington City in the short term. Note that applications will not be accepted for initiatives that move emissions out of the Wellington City boundary and claim reductions.
7. Initiatives must meet at least one of the following core fund criteria which are attached:
 - Advance Wellingtonians' understanding and uptake of the climate action challenge thereby contributing to meeting our 2030 and 2050 carbon reduction goals.
 - Preference for these grants will be initiatives that create impact beyond themselves.

- Reduce carbon emissions significantly in the near term thereby contributing to the City's 2030 carbon reduction target.
- Preference for these grants will be to initiatives that significantly reduce emissions.

8. The budget for the Fund is \$250,000 per year.

Kōrerorero | Discussion

Developing the pipeline of applications

9. In the communications promoting this round, we emphasised a particular focus on supporting applications that are Māori-led and/or projects that contribute to the city meeting its target of reducing emissions by 57% by 2030, reflecting priority areas for the Fund that have been underfunded to date.
10. Since the opening of the round in February, we have had a wide range of interest in the fund and met with over 18 groups to discuss alignment between their projects and ideas and the fund objectives and criteria. While many of these have not put in an application in the current round due to timing constraints, we are continuing these conversations and providing support, developing a pipeline of applications for upcoming rounds that align with the Fund's purpose and objectives, the next funding round is planned for later in the year.

Assessment and recommendations

11. The Fund is administered through the Council grants management system and applications have been assessed and moderated by a Review Panel consisting of internal and external experts. Collectively the panel brings deep climate action expertise, including te ao Māori approaches and a mix of business and public sector perspectives. This group have reviewed all application material and scored each application.
12. Officers recommendations are based on this scoring and consensus about which projects most strongly delivered to the objectives of the fund.
13. Six applications were received in this funding round which closed for applications on 28 March, the second and final round of the 2023-24 financial year, requesting a total of \$143,034 with \$78,573 to allocate in this round.
14. In alignment with Fund criteria, the panel assessed applications on climate change impact, deliverability and demonstrated equitable outcomes in relation to access to climate change information and action. They also prioritised Māori-led projects and projects that show strong greenhouse gas emission reduction potential in the near term. Officers recommend supporting five organisations, totalling \$76,977 as summarised below (Table 1 and Table 2):
- #1 Creative HQ Limited - \$11,244
 - #2 Kaicycle Incorporated - \$20,000
 - #3 Mechanical Tempest Incorporated – \$5,733
 - #4 ReBicycle Charitable Trust - \$20,000

- #5 Voices of Aroha - \$20,000

Table 1. Climate and Sustainability Fund – Recommended

#	Applicant	Project	Requested	Recommended	Comments
1	Creative HQ Limited	Wellington Clean Tech Summit	\$11,244	\$11,244	<p>Requesting funding towards their inaugural CleanTech Summit which will serve to spotlight both established and emerging technologies dedicated to reducing carbon emissions.</p> <p>The Review Panel agreed to recommend this application on the basis that it holds potential for supporting genuine innovation and provides an important platform for local solutions. However, they were clear that there should be a greater emphasis on including Te Ao Māori and ensuring that this summit is accessible and relevant to mana whenua and whānau Māori. They recommended funding on the basis that it is used to facilitate greater involvement in and access to this event, with KPIs around participation and engagement with Māori. This will be stipulated in our funding conditions.</p>
2	Kaicycle Incorporated	Māra Māori ki Whanganui a Tara – whānau Māori māra sessions and network	\$20,000	\$20,000	<p>Requesting funding to facilitate māra sessions for whānau Māori by whānau Māori to educate, empower and wānanga traditional and sustainable growing practises, supporting the development of local, circular, low carbon food systems grounded in Te Ao Māori and empowering Māori to take tangible climate action with the whenua.</p> <p>This application was unanimously supported by the Review Panel as it meets our explicit priority for Māori-led climate action projects and delivers towards Te Anamata ā Kai o tā Tātou Tāone Our Cities Food Future and Tūpiki Ora Māori Strategy.</p>
3	Mechanical Tempest	New Workshop	\$5,733	\$5,733	The Review Panel unanimously recommended funding for this project as they considered it well-planned,

	Incorporated				responsive to genuine demand and supportive of mode shift required to address Wellington's high transport emissions.
4	ReBicycle Charitable Trust	E-bike Library	\$48,320	\$20,000	Requesting funding to pilot an e-bike library in partnership with Beam, building on their learning from their e-cargo-bike library trial and feasibility study into shared e-bikes in community housing. The Review Panel were supportive of the project idea, but did not support funding at the scale requested. Recommending support for a smaller scale pilot which the applicant has confirmed is viable.
5	Voice of Aroha Charitable Trust	Empowering Climate Action solutions for former refugee and migrant communities in Wellington	\$20,000	\$20,000	Requesting funding to continue their project to empower climate action solutions by and for former refugee and migrant communities in Wellington. This is building on their successful pilot which we funded last year. The Review Panel unanimously supported full funding for this project, however encourage them to focus on finding opportunities for partnership with Tangata Whenua, as well as a shift towards more practical action on emissions reductions.

Table 2. Climate and Sustainability Fund – Recommended Decline

#	Applicant	Project	Requested	Comments
6	Bhartiya Samaj Lower North Island Trust	A Step Towards a Sustainable Future – Your Own Vegetable Garden	\$37,736	The Review Panel did not support funding for this project as they did not see strong emissions reduction potential or connection to fund priorities and were not confident about the sustainability of their approach and therefore longevity of impact. Officers will work with the applicant to provide feedback and connect them to our local sustainable food network.

Kōwhiringa | Options

15. Not applicable, members of Pītau Pūmanawa | Grants Subcommittee can decide what level of funding to allocate to which applicant.

Whai whakaaro ki ngā whakataunga | Considerations for decision-making

Alignment with Council's strategies and policies

16. The Fund is included in Te Atakura – First to Zero, the Council's climate change response strategy.

Engagement and Consultation

17. Te Atakura has been consulted on with the public, including the establishment of this Fund. The Community Activator/Funding Advisor role within the Community Services team supports applications, community organisations and projects committed to reducing carbon emissions.
18. A communications and engagement plan includes highlighting funded projects.
19. Where there are options for support via other Council funds or other funders Officers will provide advice and information. In promoting the fund, projects that have been funded have and will be profiled.

Implications for Māori

20. This Fund prioritises initiatives developed by, and with, mana whenua and projects that are Māori-led. The moderation and decision-making processes include Māori perspectives and expertise. The assessment of applications aims to identify and consider unintended consequences that may impact communities and consider applications' consistency with Tūpiki Ora.
21. In promoting the current round, we stated a priority for Māori-led climate action projects and focussed our engagement on connecting with Māori-led organisations and projects. We received one application that meets this priority, and this was a key consideration within the assessment process and our funding recommendations.

Financial implications

No additional funding required. Legal considerations

22. No legal considerations.

Risks and mitigations

23. The Climate Change Funding Advisor will work across Council and with community organisations and businesses to support a pipeline of high quality, eligible initiatives for this Fund.
24. There is a risk that funding is not used for the purpose intended which can be mitigated by providing funding in staged payments, or at the completion of projects. Funded organisations can also be asked to provide financial statements and provide reports at the end and during the life cycle of the projects funded.

Disability and accessibility impact

25. We will engage via Connected Communities with groups and individuals seeking support for projects.

Climate Change impact and considerations

26. This initiative is part of Te Atakura – First to Zero and will support the achievement of Wellington’s 2030 and 2050 carbon reduction goals.

Communications Plan

27. The Fund will be publicised using the normal communications channels for our existing grants, as well as identifying channels that may be more effective for underrepresented communities. Officers are implementing a communications and engagement plan and have updated the Council webpage for the Fund to clarify the types of projects likely to be successful, this has included clarification about the eligibility of applications focussed on political advocacy or legal action. In promoting the fund, we will highlight projects that have been supported and add case studies of projects once completed.

Health and Safety Impact considered

28. Funded organisations will be required to adhere to legal Health and Safety obligations in accordance with their entity type, and in accordance with their Funding Agreement with Wellington City Council.

Ngā mahinga e whai ake nei | Next actions

29. The first Climate and Sustainability fund round of 2024/25 will open in August 2024. Officers will be undertaking communication and engagement activities to build relationships and promote the Fund.

Attachments

Nil

WASTE MINIMISATION SEED FUND: ORGANICS DIVERSION 2024

KŌRERO TAUNAKI | SUMMARY OF CONSIDERATIONS

Purpose

1. This report to Pītau Pūmanawa | Grants Subcommittee provides recommendations for allocation of funding through the Waste Minimisation Seed Fund – Organics Diversion 2023/24.

Strategic alignment with community wellbeing outcomes and priority areas

Aligns with the following strategies and priority areas:

- Sustainable, natural eco city
- People friendly, compact, safe and accessible capital city
- Innovative, inclusive and creative city
- Dynamic and sustainable economy
- Functioning, resilient and reliable three waters infrastructure
- Affordable, resilient and safe place to live
- Safe, resilient and reliable core transport infrastructure network
- Fit-for-purpose community, creative and cultural spaces
- Accelerating zero-carbon and waste-free transition
- Strong partnerships with mana whenua

Strategic alignment with priority objective areas from Long-term Plan 2021–2031

Relevant Previous decisions

Not applicable

Significance

The decision is **rated low significance** in accordance with schedule 1 of the Council’s Significance and Engagement Policy.

Financial considerations

- Nil
 Budgetary provision in Annual Plan / Long-term Plan
 Unbudgeted \$X

2. Additional Waste Levy funds of \$100,000 per annum for three years (2021/22 – 2023/24) approved in the LTP 2021-2031.

Risk

- Low
 Medium
 High
 Extreme

Authors	Joanna Langford, Senior Waste Minimisation Officer Mark Farrar, Business Performance Manager Yvonne Mackie, Funding Team Leader
Authoriser	Jennifer Elliott, Manager Waste Operations Chris Mathews, Manager Waste, Water and Resilience Siobhan Procter, Chief Infrastructure Officer

Taunakitanga | Officers' Recommendations

Officers recommend the following motion

That Pītau Pūmanawa | Grants Subcommittee:

1. Receive the information.
2. Agree to the allocation of funding for the Waste Minimisation Seed Fund – Organics Diversion for applications as listed below:
#1. Brewwell Limited \$75,000
#2. New Zealand Sport Fishing Council Incorporated \$25,000

Whakarāpopoto | Executive Summary

3. This report recommends the allocation of the Waste Minimisation Seed Fund – Organics Diversion for 2023/24.
4. In total, \$100,000 of waste minimisation seed fund money is available for allocation by Council for Organics Diversion in 2023/24. This funding was approved for three years, with the first year being the 2021/22 financial year, in the Long-term Plan 2021-2031. The successful applicant(s) will receive funds in June 2024.
5. Officers received 3 applications and recommend the support of the Brewwell Limited “Organic Brewing Waste Diversion from Landfill” and New Zealand Sport Fishing Council Incorporated “Kai Ika” projects, grants totalling \$100,000. In line with the waste minimisation seed fund criteria, these two projects are initiatives which will divert organic waste from landfill, with measurable diversion outcomes.

Takenga mai | Background

8. Within the Waste Management and Minimisation Plan 2017–2023 (WMMP) the Council, together with the other territorial authorities of the Wellington Region, set a target to reduce the total quantity of waste sent to class 1 landfills by one third by 2026.
9. The Waste Minimisation Fund is comprised of funding supplied by the Ministry for the Environment (MfE). When waste is disposed of in a class 1 New Zealand landfill, a levy of \$50 per tonne is collected by MfE, with a portion of the money allocated back to Wellington City Council and other territorial authorities based on population proportion. The MfE levy money must be spent on promoting or achieving waste minimisation as set out in the WMMP.
10. Within the WMMP 2017-2023, Council committed to:
 - E.4: Promote and support the reduction and diversion of organic waste: Continue to support and promote organics waste reduction and diversion programmes.
 - LM.1: Support community groups and the business sector: Provide support to businesses and community groups to develop waste minimisation initiatives and opportunities; and
 - LM.2: Provide grants for community and business development: Provide grants for stakeholder groups to develop waste minimisation initiatives.
11. In the Long-term Plan 2021-2031 Council “agreed to allocate additional levy funding to the waste minimisation grant fund for a new fund to be set up - \$100,000 per annum for

three years. This fund will focus on organics diversion”, with the first year being the 2021-22 financial year.

12. This grant fund provides a mechanism for the Council to respond to businesses, community groups and organisations that are undertaking projects that will support the council’s WMMP waste reduction targets by reducing organic waste to landfill.
13. Projects are funded through a contestable grants pool. As approved by the Pītau Pūmanawa | Grants Sub Committee on 1 December 2021, the funding process for the Waste Minimisation Seed Fund – Organics Diversion is as follows:
 - Applicants submit Expressions of Interest (EOI) via webform
 - Officers review EOI papers and invite preferred applicants to submit full application
 - Applicants submit full application on Fluxx, WCC’s funding portal
 - Officers assess applications
 - Recommendations presented to Pītau Pūmanawa | Grants Sub Committee for decision
14. Funding applications are submitted online and have been made available to all Councillors.

Criteria

15. As approved by the Pītau Pūmanawa | Grants Sub Committee on 1 December 2021, funding recommendations are based on assessment in order of priority according to the food and drink waste hierarchy:
 - (i) Prevention: Wasted materials, ingredients and product reduced at source
 - (ii) Prevention: Redistribution to people
 - (iii) Prevention: Animal feed
 - (iv) Recycling: Anaerobic digestion or composting
 - (v) Recovery: Incineration of waste with energy recovery
 - (vi) Disposal: To landfill or sewer, or incineration without energy recovery
16. And giving consideration to:
 - Project scale and potential organic waste diversion tonnages
 - Acknowledgement and inclusion of Te Ao Māori principles
 - Adherence to the principles of the Circular Economy
 - Projects that can deliver outcomes at scale, funding a minimal number of larger projects in preference to multiple smaller projects, for maximum impact.

Kōrerorero | Discussion

17. The Waste Minimisation Seed Funds support development of innovative solutions for reducing waste, so that Wellingtonians can be leaders in waste minimisation. This particular fund focusses on diversion of organic waste from landfill.
18. Four EOIs were received for the current funding round, totalling \$323,050. All applicants were invited to submit a full application and three submitted applications.
19. Projects were assessed against the criteria outlined in 15. & 16. above.
20. Officers are recommending the Pītau Pūmanawa | Grants Subcommittee supports two projects with grants totalling \$100,000: Brewwell Limited “Organic Brewing Waste Diversion from Landfill” and New Zealand Sport Fishing Council Incorporated “Kai Ika”.
21. The successful applicant(s) will submit a report on project outcomes at the end of the 12-month project timeframe, for officer review and approval.
22. Summary of applications received and rationale for recommendations in table below:

Table 1: Waste Minimisation Seed Fund - Organics Diversion Recommended

#	Applicant	Project	Requested	Recommended	Comments
1	Brewwell Limited, trading as Garage Project	Organic Brewing Waste Diversion from Landfill	\$86,845	\$75,000	<p>Requesting funds towards infrastructure to separate yeast and hop solids in brewing process, enabling product to be diverted from landfill for composting at Capital Compost.</p> <p>Good measurable and consistent diversion, estimating 100 tonnes per annum. Good long-term viability with ongoing costs offset by savings in landfill fees.</p> <p>Opportunity to showcase how businesses can create systems change to reduce waste with potential to share findings with local brewing community. Working in lower tier of waste hierarchy (composting) but infrastructure allows for future reuse opportunities as markets develop.</p>
2	New Zealand Sport Fishing Council Incorporated	Kai Ika	\$97,735	\$25,000	<p>Requesting funds towards infrastructure and operational costs to scale up the Kai Ika project in Wellington, diverting fish offcuts from landfill and providing a source of food to the community.</p> <p>Working in prevention tier of hierarchy with good diversion of 73.5T estimated in year one.</p> <p>Proven model operating in Auckland with broader social benefits addressing food insecurity. Recommend partial funding as some project aspects are regionally focused.</p>

Table 2: Waste Minimisation Seed Fund - Organics Diversion Recommended Decline

#	Applicant	Project	Requested	Recommended	Comments
3	Community Enterprise Network (NZ) Trust, trading as Zero Waste Network	Whakahaumanu Hineahuone - Wellington Pilot	\$100,000	\$0	Requesting \$100k contribution towards Wellington element of national project fostering small to medium scale composting initiatives. Detail on Wellington delivery and how diversion would be achieved and measured is yet to be determined by the applicant. This would form phase one of the project in 24/25, with Wellington delivery not until phase two commencing April 2025. Central government funding for national programme is provisionally available at 80%, requiring the remaining 20% co-funding before project commencement; this application is for half of this 20%. Other projects better align with the fund priority of delivering immediate organics diversion at scale.

Kōwhiringa | Options

23. Approve the funding as per Officers' recommendations.

24. Do not approve the funding and defer the funding to the 2024/25 financial year.

As outlined in 9. and 11. the Waste Minimisation Seed Fund – Organics Diversion is funded from the waste levy and as such does not need to be spent within a designated financial year.

Whai whakaaro ki ngā whakataunga | Considerations for decision-making

Alignment with Council's strategies and policies

25. Applications and recommendations align with:

Zero Waste Strategy:

- Vision to “achieve intergenerational sustainability by achieving a circular economy”
- Objectives 1 to 3:
 1. Products and service provided in Wellington are waste free
 2. Waste reduction is made attractive and accessible to Wellingtonians
 3. Infrastructure and systems to increase resource circularity are established
- Zero Waste principles of reduction of waste, materials reuse, culture change and proximity principle

The Wellington Region Waste Management and Minimisation Plan 2017- 2023:

- E.4: Promote and support the reduction and diversion of organic waste: Continue to support and promote organics waste reduction and diversion programmes.
- LM.1: Support community groups and the business sector: Provide support to businesses and community groups to develop waste minimisation initiatives and opportunities; and
- LM.2: Provide grants for community and business development: Provide grants for stakeholder groups to develop waste minimisation initiatives.

Te Atakura – First to Zero:

- Landfilled waste makes up more than 80% of Council emissions due to the ownership of two Council landfills.
- Taking into account Wellington’s emissions, zero carbon is quite simple. We need to support changes in the city that reduce the emissions we create. This means dramatically reducing waste to landfill.

Engagement and Consultation

26. Low significance.

Implications for Māori

35. No applications were received from Māori-led organisations. This may highlight a need for Council to consider how best to engage with our local Māori community and encourage applications, and consider provision of support for local organisations with cultural capability and fostering connections with mana whenua.

Financial implications

36. The funding recommendations detailed within this report have no impact on rates. Funds come from Waste Levy Funds (see 6. in Takenga Mai | Background) and are allocated in accordance with MfE requirements, and the Wellington Region Waste Management and Minimisation Plan.

Legal considerations

37. No legal risks

Risks and mitigations

38. Low risk programmes and projects are proposed by legal entities who are responsible for projects and programmes and all associated risks.

Disability and accessibility impact

39. No disability and accessibility impacts.

Climate Change impact and considerations

40. The organics diversion project supports the Te Atakura – First to Zero programme as it will assist to reduce waste to landfill and associated landfill gas emissions, and therefore reduce the potential for climate change impacts.

Communications Plan

41. Grantees and applicants receive email communication following the decision, for those granted funding this includes guidance on how funding should be acknowledged by the organisation and how Council can share information through communication channels.
42. Once funding approval has been granted, a Communications Plan will be developed which may include:
 - Media release
 - WCC officials' attendance at a launch event
 - Our Wellington story to be shared via all WCC's usual comms channels including social media

Health and Safety Impact considered

43. Funded organisations will be required to adhere to legal Health and Safety obligations in accordance with their entity type, and in accordance with existing funding agreements with Wellington City Council. Funding agreements for this fund would include reference to the entity and its obligations under legislation.

Ngā mahinga e whai ake nei | Next actions

44. Not applicable.

Attachments

Nil

HERITAGE RESILIENCE AND REGENERATION FUND, 2023/24 REPORT

Kōrero taunaki | Summary of considerations

Purpose

1. This report to Pītau Pūmanawa | Grants Subcommittee advises on Heritage Resilience and Regeneration Fund (HRRF) allocations to be made for 2023/24 financial year.

Strategic alignment with community wellbeing outcomes and priority areas

Aligns with the following strategies and priority areas:

Strategic alignment with priority objective areas from Long-term Plan 2021–2031

- Sustainable, natural eco city
- People friendly, compact, safe and accessible capital city
- Innovative, inclusive, and creative city
- Dynamic and sustainable economy
- Functioning, resilient and reliable three waters infrastructure
- Affordable, resilient and safe place to live
- Safe, resilient and reliable core transport infrastructure network
- Fit-for-purpose community, creative and cultural spaces
- Accelerating zero-carbon and waste-free transition
- Strong partnerships with mana whenua

Relevant Previous decisions

Te Kaunihera o Pōneke | Council approved the destablishment the Built Heritage Incentive Fund, and its replacement by the Heritage Resilience and Regeneration Fund (15 December 2021).
Pūroro Rangaranga | Social, Cultural and Economic Committee approved the final *Built Heritage Incentive Fund - 2021-22 Round* (2 June 2022).

Financial considerations

Nil Budgetary provision in Annual Plan / Long-term Plan Unbudgeted \$X

2. The previous Built Heritage Incentive Fund (BHIF) has returned \$151,100 to the HRRF 2022/23 from five previous grants that have been closed. This will be distributed in this round.
3. The HRRF 2022/23 has returned \$33,600 to the HRRF 2023/24.
4. The HRRF is funded at \$500k per annum in the LongTerm Plan 2021–31.
5. The fund is distributed proportionatly with 85% of the fund to the remediation of Earthquake Prone Heritage Buildings and 15% of the fund to Heritage Building Conservation.
6. Decisions for grants under \$100,000 from the fund are delegated to Council Officers.

7. For the 2023/34 financial year the HRRF is funded \$684,700 and comprises:
- \$547,900 for earthquake strengthening of EPHBs
 - \$96,700 for heritage building conservation purposes
 - \$40,100 for resource consent reimbursements for heritage building owners.

Risk

| Low | Medium | High | Extreme

8. The HRRF funding enables only partial completion of buildings' full seismic strengthening processes. Earthquake prone heritage building owners may have insufficient funds to complete the capital strengthening works required to meet the Building Act's strengthening deadlines.

Authors	Noel Luzzi, Senior Heritage & Urban Regeneration Advisor Mark Lindsay, Cultural Heritage Manager
Authoriser	Sean Audain, Manager Strategic Planning Liam Hodgetts, Chief Planning Officer

Taunakitanga | Officers' Recommendations

Officers recommend the following motion

That the Pītau Pūmanawa | Grants Subcommittee:

1. Receive the information.
2. Note:
 - This financial year \$644,600 is available for HRRF grants directed to heritage building seismic strengthening (85%) and conservation purposes (15%).
 - All seismic grants reflect the priorities of Council's Earthquake-Prone Programme and the deadlines of Earthquake Prone Building (EPB) notices issued under the Building (Earthquake-prone Buildings) Amendment Act 2016.
 - All recommended grants will be approved under officers' delegation (up to \$100,000).

Whakarāpopoto | Executive Summary

Earthquake Prone Buildings

9. Council approved the HRRF on 15 December 2021 to replace the Built Heritage Incentive Fund (BHIF). HRRF targets funding to strengthen, adapt and sustainably use district plan listed heritage buildings. HRRF funding is also intended to align with other Council investments in infrastructure development and urban regeneration projects. It provides support funding to projects where successful earthquake strengthening outcomes would be unlikely without assistance.
10. Officers have developed a funding strategy that identifies priority areas within which Earthquake Prone Heritage Buildings (EPHB), or groups of EPHBs, may be funded individually or collectively to establish areas of seismic safety in the city.
11. The pandemic and the cost of living crisis have amplified the strong demand for financial assistance from EPHB owners. The HRRF follows the pattern of BHIF funding whereby most seismic strengthening grants have been for commercial premises, large public buildings and multi-unit residential buildings.

HRRF Grants 2023/24

12. HRRF grants under \$100k are approved by the relevant Business Unit Manager. Grants over \$100k are recommended by the Pītau Pūmanawa | Grants Subcommittee and approved by the Kōrau Tūāpapa | Environment and Infrastructure Committee. Officers are required to report to the Pītau Pūmanawa | Grants Subcommittee on approved HRRF allocations.
13. Attachment 1. sets out the schedule of grants recommended to the responsible Business Unit Manager for 2023/24. These grants are targeted to the buildings with EPB deadlines expiring in 2026 and 2027, within the priority areas.
14. All grants are for the Seismic Assessments or Detailed Design phases of strengthening works, and for capital strengthening works. All grants are under \$100,000 are delegated to officers for decision.

Takenga mai | Background

Wellington's Earthquake Prone Heritage Buildings

15. Council has a strategic focus on resolving the issues posed by earthquake prone buildings. Proactively working with owners to resolve their earthquake prone buildings ahead of regulatory deadlines imposed by notices is in the best interests of all, particularly in avoiding the disruption, compliance costs and economic disbenefits of having buildings that are unable to be used in city streets.
16. Heritage protection makes the pathways for owners of heritage buildings more complex than other building types, and this is recognised through the support given by the HRRF. The fund also recognises the benefits of having adaptively reused buildings contributing positively to the wellbeing of the city.
17. There are presently 553 Wellington buildings have been identified in the Ministry of Innovation, Business and Employment's (MBIE) Register of Earthquake-prone Buildings (EPB Register). Of these 553 buildings 118 (more than 20%) are earthquake prone heritage buildings (EPHBs). The Building (Earthquake-prone Buildings) Amendment Act 2016 requires seismic work to be completed on 90 of these EPHBs by 2028.
18. Considerable investment has already taken place in resolving earthquake prone buildings with \$2.75 million in BHIF/HRRF funding contributing to 45 of the 107 Earthquake prone Heritage Buildings that have already been resolved and removed from the list between 2014-2023. This funding has enabled the adaptive reuse of many of these buildings and has partially contributed to the costs arising from the heritage listing on owners of these buildings.
19. On 18 April 2024, the Government announced it will review the earthquake-prone building system. While the review is underway, the Government has proposed to amend the Building (Earthquake-prone Buildings) Amendment Act 2016 to extend all non-lapsed earthquake-prone building remediation deadlines, as of 2 April 2024, by four years, with an option to extend by a further two years if required. Even with these extensions it is anticipated that building owners will face considerable challenges in meeting legislative requirements in the current construction market.

The Strengthening Process

20. There are three main stages that a building must progress through to be strengthened to the required statutory standard and be removed from the EPB Register. These are:
 1. Seismic assessment and concept planning
 2. Seismic detailed design
 3. Completing strengthening
21. The additional time for compliance that has been proposed by the Government for EPB owners does not change the hurdles faced in the planning, financing, and implementation of seismic strengthening works These include:

- navigating practical, regulatory and knowledge barriers associated with an overburdened engineering and construction markets, statutory regulations, and access to the right information needed for strengthening projects.
- increased costs: rising material costs and pressures on the construction sector are leading to escalating costs for the build phase of seismic strengthening works, in conjunction with the cost of living crisis and the significant increase in insurance premiums (where insurance exists).
- reduced access to financial support: between September 2017 and May 2020 the Ministry for Culture and Heritage’s Heritage Equip Fund provided over \$2m in funding to 11 Wellington EPBs. The cancellation of this programme means there are fewer funding options available to support EPB owners.
- reduced access to alternative support services from the Government discontinuing the Earthquake-prone Building Support Service pilot for residential earthquake prone building owners. The pilot will end on 30 June 2024.

Heritage Resilience and Regeneration Fund

22. On 15 December 2021 Council disestablished the Built Heritage Incentive Fund (BHIF) and Established the Heritage Resilience and Regeneration Fund.

Kōrerorero | Discussion

HRRF Funding Strategy

23. Heritage Buildings are a valued part of the lives in our streets, and for them to contribute positively to the wellbeing of the city they must continue to adapt and be relevant to peoples’ lives.
24. The purpose of the HRRF is to incentivise the strengthening of Wellington’s earthquake prone heritage buildings, to conserve and restore heritage buildings and, where possible, to align this funding with other areas of Council infrastructure investment and urban regeneration. 85% of the fund is reserved for earthquake strengthening related work, and 15% is for conservation-specific work.

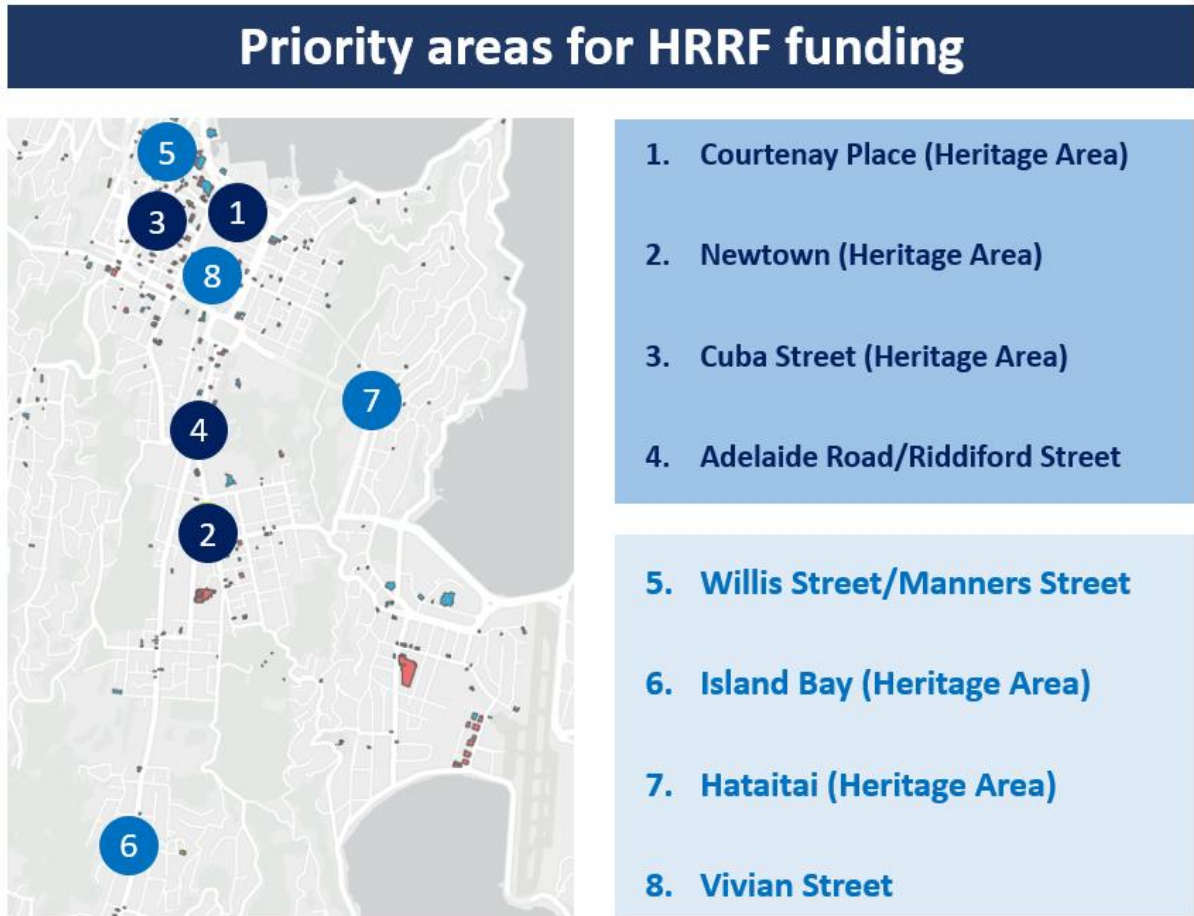
Targeted funding priorities

25. The 2021 Council decision noted that the HRRF strategy will target funding to priority EPHBs. These are:
- buildings approaching the expiry date of their earthquake prone building notice
 - owners who have not commenced the seismic assessment or detailed design for strengthening projects
 - projects which strengthen more than one building
 - buildings situated within current or proposed areas of Council investments in infrastructure and urban regeneration
 - buildings that are accessible to the public, such as community and commercial premises
 - projects previously funded through the BHIF, to ensure the successful completion of a strengthening project.

Priority Areas and alignment with Urban Regeneration Investments

26. Officers have identified potential priority areas where groups of EPHBs can be funded collectively to maximise the impact of funding in streets. Working in collaboration with, potentially, multiple building owners through a Council-led case management approach, capital works and project management efficiencies can be achieved. Funding projects that include multiple buildings, and potentially shared costs, can incentivise building owners to act more quickly on their statutory deadlines and avoid situations where an unstrengthened building can affect the outcomes of owners who have already strengthened or are otherwise unaffected.
27. The funding priorities aligns the priority areas to other Council infrastructure investments, such as urban design and regeneration projects, to maximise urban regeneration benefits where possible.
28. Seismic strengthened and adaptively re-used heritage buildings along transport routes and in rejuvenated urban neighbourhoods support localised commercial and economic growth, public amenity, and a positive sense of place. Successful examples of this approach include Cuba Street and the Hannah's Laneway project.
29. Table One shows the eight priority areas identified across the city. These are based on:
 1. The Ministry for Business, Innovation and Employment's Earthquake Prone Buildings Register
 2. Emergency and Priority routes for emergency management
 3. Anticipated significant city transport and Golden Mile proposed routes
 4. Areas of potential urban redevelopment for Council
 5. Clusters of district plan listed heritage buildings.

Table One



2022/23 HRRF Grants

- 30. In 2022/23 sixteen applications were recommended for grants, with twelve applications granted successfully. The remaining four applications were not completed.
- 31. To date:
 - Two grants have been completed.
 - One grant has been completed and has returned \$3,600 (this is because the final expenses were less than the eligible costs).
 - One grant has been closed and has returned \$30,000 (this is because the grant holders have decided to not lodge a building consent, as required by the conditions of the grant).
 - Eight grants are expected to be completed by the end of the year (2024).

HRRF Funding Priorities for 2022/23



- 32. Attachment A sets out the seismic strengthening and heritage conservation allocations for the current financial year. All grants are less than \$100,000 and will be approved under officer's delegation. In summary, this funding:

- provides a total of 10 grants for seismic strengthening work (averaging \$54,790) comprising:
 - i. eight detailed seismic assessments and seismic designs (DSA; DSD)
 - ii. two strengthening capital works program (SW)
 - three grants for heritage conservation projects
33. Four priority areas have been considered for the 2023/24 financial year, with priority given to EPHBs in:
- Courtenay Place Heritage Area, where they align with Council and partner organisations' initiatives and investments to support the public safety, transformation and beautification of Courtenay Place, and where there are still a number of EPHBs with EPB notice expiring in 2027 (two grants)
 - Cuba Street Heritage Area, where there are still a number of EPHBs with EPB notice expiring in 2027 (three grants)
 - Newtown Heritage Area, where there is a concentration of buildings with EPB notice expiring in 2027 (four grants)
 - Vivian Street, where other (re)developments projects (private/public) are underway (one grant).
34. Conservation grants will be allocated for three eligible listed heritage buildings projects. These are for conservation repair works.

Ngā mahinga e whai ake nei | Next actions

35. Officers will continue to work with identified priority building owners to ensure that, following the acceptance of HRRF grants, the subsequent stages of strengthening works are progressed.
36. Officers will also further develop the precinct strategy to incentivising the seismic strengthening of earthquake prone heritage buildings to meet statutory deadlines and aligning HRRF investments with Council urban regeneration and infrastructure development priorities.

Attachments

- Attachment 1. Recommended seismic strengthening and heritage conservation HRRF allocations for 2023/24 financial year   Page 79

Attachment 1.

Recommended seismic strengthening and heritage conservation HRRF allocations for 2023/24 financial year.

All 13 grants are less than \$100,000 and will be approved under officer's delegation.

HRRF 2023/24	100%	684,700
Heritage Fee Reimbursement	6%	40,100
Grants	94%	644,600
Address	Project	
Seismic strengthening allocations	85% of the Grants	547,900
48 Courtenay Place	Strengthening work	
26 Allen Street	Detailed Seismic Assessment and Detailed Seismic Design	
138 Riddiford Street	Strengthening work	
167 Riddiford Street	Detailed Seismic Assessment	
171 Riddiford Street	Detailed Seismic Assessment and Detailed Seismic Design	
179 Riddiford Street	Detailed Seismic Design	
116 Cuba Street	Detailed Seismic Assessment	
79 Manners Street	Detailed Seismic Assessment and Detailed Seismic Design	
131 Manners Street	Seismic Detailed Design	
33 Vivian Street	Detailed Seismic Design	
Heritage conservation allocations	15% of the Grants	96,700
67 Futuna Close	Repairs and reroofing	
192 Cuba Street	Window repairs	
39 Jervois Quay	Conservation and repairs	

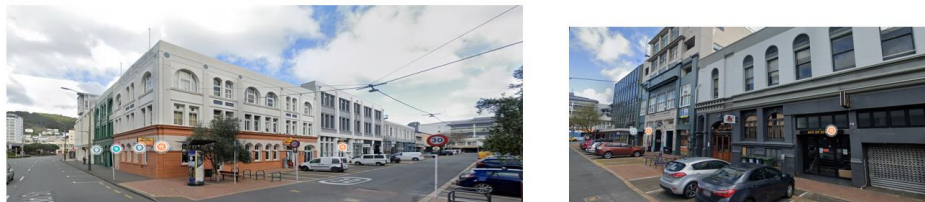
Seismic strengthening allocations

Courtenay Place (Heritage Area) – Courtenay Place



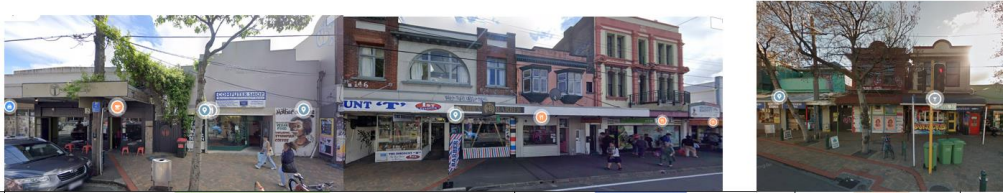
Street N. Contributing building in heritage area * Listed heritage building	56	48*	46*	38	30-36*	28*	24-26*	18-22* (32 Blair)
EPB notice ex.		2027			2025			
Heritage grant	Tony Street	HRRF Grant (2023/24) Strengthening work			Allen Street HRRF Grant (2022/23) underway DSD			Blair Street

Courtenay Place (Heritage Area) – Wakefield Street/Allen Street



Street N. Contributing building in heritage area * Listed heritage building	272*	1-5* Allen		26-32* Allen
EPB notice ex.	2031	2028		2027
Heritage grant	Wakefield Street* (all adjacent buildings listed)	BHIF Grant (2021/22) Not completed	Allen Street* (all buildings listed/contributors)	HRRF Grant (2023/24) DSA + DSD

Newtown (Heritage Area) – Riddiford Street/Rintoul Street



Street N. Contributing building in heritage area *Listed heritage building	152	150	146	142	138		8	6	4	
EPB notice ex. Heritage grant		2027 RC for demolition and replacement building granted (6 May 2024)			2027 HRRF Grant (2023/24) Strengthening work		Rintoul Street	2027 Invitation for HRRF 2023/24 declined		Riddiford Street

Newtown (Heritage Area) – Riddiford Street




Street N. Contributing building in heritage area *Listed heritage building	163	167	169	171	173	179*	191	193	
EPB notice ex. Heritage grant	2027 To follow (joined with 167 or potentially replaced?)	2027 HRRF Grant (2023/24) DSA		2026 HRRF Grant (2023/24) DSA + DSD		2027 HRRF Grant (2023/24) DSD	2028 Non eligible		

Cuba Street (Heritage Area) – Cuba Street



Street N. Contributing building in heritage area *Listed heritage building	128*	126*	124	120	118*	116*	108	100*
EPB notice ex.	2025		2031		2027	2027		
Heritage grant	Invitation for HRRF 2022/23 and 2023/24 declined		Non eligible		HRRF (2022/23) underway DSA + DSD	HRRF Grant (2023/24) DSA	Left Bank	

Cuba Street (Heritage Area) – Manners Street



Street N. Contributing building in heritage area *Listed heritage building	67	73	79*		49 (Cuba)*		
EPB notice ex.	2027		2027				
Heritage grant	Non eligible		HRRF Grant (2023/24) DSA + DSD		Cuba Street		

Cuba Street (Heritage Area) – Manners Street






Street N. Contributing building in heritage area *Listed heritage building	107	109*	119	125	131*	135	141
EPB notice ex.		2031	2027	2024	2027		
Heritage grant		Non eligible	Non eligible	Not eligible Strengthening work underway	Lukee Lane HRRF Grant (2023/24) DSD		Taranaki Street

Vivian Street



Street N. Contributing building in heritage area *Listed heritage building	25	25	29	31*	33*	35	37
EPB notice ex.	2028				2027		2028
Heritage grant	Not eligible				HRRF Grant (2023/24) DSA		Not eligible

Conservation allocations

<p>1. 67 Futuna Close</p> <p>Futuna Chapel Individually listed (ID 125) Historic Place cat. 1 (ID 7446)</p>	
<p>2. 192 Cuba Street</p> <p>National Bank Te Aro Building (Former) Individually listed (ID 088) Historic Place cat. 1 (ID 3634)</p>	
<p>3. 29 Jervois Quay</p> <p>Star Boating Club Individually listed (ID 123) Historic Place cat. 1 (ID 1431)</p>	

ACTIONS TRACKING AND FORWARD PROGRAMME

Kōrero taunaki | Summary of considerations

Purpose

1. This report provides an update on past actions agreed by the Pītau Pūmanawa | Grants Subcommittee (the Committee), or its equivalent, at its previous meetings (hui).
2. Additionally, this report provides a list of items that are scheduled to be considered at the next two hui of the Committee.

Strategic alignment with community wellbeing outcomes and priority areas

Aligns with the following strategies and priority areas:

- Sustainable, natural eco city
- People friendly, compact, safe and accessible capital city
- Innovative, inclusive and creative city
- Dynamic and sustainable economy
- Functioning, resilient and reliable three waters infrastructure
- Affordable, resilient and safe place to live
- Safe, resilient and reliable core transport infrastructure network
- Fit-for-purpose community, creative and cultural spaces
- Accelerating zero-carbon and waste-free transition
- Strong partnerships with mana whenua

Strategic alignment with priority objective areas from Long-term Plan 2021–2031

Relevant Previous decisions

Not applicable.

Financial considerations

Nil

Budgetary provision in Annual Plan / Long-term Plan

Unbudgeted \$X

Risk

Low

Medium

High

Extreme

Author	Steph James, Democracy Advisor
Authoriser	Sean Johnson, Democracy Team Leader James Roberts, Chief Operating Officer

Taunakitanga | Officers' Recommendations

Officers recommend the following motion:

That the Pītau Pūmanawa | Grants Subcommittee:

1. Receive the information.

Whakarāpopoto | Executive Summary

Actions Tracking

3. The Committee passed 70 resolutions on 6 Hakihea 2023 (6 December 2023)
 - All are complete
4. The Committee had 3 in progress actions carried forward from previous action tracking reports:
 - One is complete
 - 2 are still in progress

Forward Programme

5. The following items are scheduled to go to the Committee's next two hui:

Rāapa, 9 Whiringa-ā-nuku 2024 (Wednesday, 9 October 2024)

- Natural Environment Fund (Chief Planning Officer)
- Arts and Culture Fund (Chief Operating Officer)
- Social and Recreation Fund (Chief Operating Officer)

Rāapa, 4 Hakihea 2024 (Wednesday, 4 December 2024)

- Climate and Sustainability Fund (Chief Planning Officer)
- Waste Minimisation Seed Fund \$2000 and over (Chief Infrastructure Officer)
- Arts and Culture Fund (Chief Operating Officer)
- Social and Recreation Fund (Chief Operating Officer)

Takenga mai | Background


Actions Tracking

6. Attachment 1 lists clauses agreed by the Committee that are still in progress or have been completed since actions were last reported on.
7. For public excluded resolutions, individual clauses will not be reported on in a public hui. An overall status for the item will be given and it will remain in progress until all clauses are complete.
8. Actions will be removed from the list once they have been reported as complete.
9. Where applicable, this report contains actions carried over from the equivalent committee(s) of previous trienniums.
10. The purpose of the actions tracking report is to ensure that all resolutions are being actioned over time. It does not take the place of performance monitoring or full updates. The Committee could resolve to receive a full update report on an item, if it wishes.

Forward Programme

11. The forward programme sets out the reports planned for to go to the Committee for consideration in the next two hui.
12. It is a working document and is subject to change on a regular basis.

Attachments

Attachment 1. Actions Tracking - Complete and In progress [↓](#) 

Page 88

Date	ID	Committee	Title	Clause number	Clause	Status	Comment
13/10/2021	356	Grants Subcommittee	2.3 Social and Recreation Fund August 2021	4	Direct officers to evaluate access barriers of disabled people who engage with ending homelessness groups working with WCC.	In progress	Will be considered as part of both the Accessibility Action Plan and work underway on homelessness
24/05/2023	2043	Grants Subcommittee	A.1 Sustainability Trust Update on operational model	A.1 - Release clause	Note the information will be considered for release in May 2024	In progress	Reviewed 10/5/24 - information is still commercially sensitive and recommend not releasing.
31/08/2022	835	Grants Subcommittee	2.2 Natural Environment Fund - July 2022	3	Recommend that the next Grants Subcommittee recommend to the next Annual Plan and LTP to seek officers' advice on an increase in the Natural Environment Fund.	Completed	November 2023: Officers have provided advice for the LTP process, given cost constraints facing the 2024 LTP, no increases in the Natural Environment Fund is proposed in the draft LTP (for consultation) . Officers recommend this can be reconsidered in next annual plan. The proposals in this (LTP) report include reviewing and prioritising grant pools in alignment with outcomes, priorities, and strategies. The result of this review could lead to changes to the mix of funding across different grant pools.
6/12/2023	3135	Grants Subcommittee	2.1 Waste Minimisation Seed Fund (over \$2,000) - 2023	1	Receive the information.	Completed	
6/12/2023	3136	Grants Subcommittee	2.1 Waste Minimisation Seed Fund (over \$2,000) - 2023	2 #1	Agree to the allocation of \$75,000 funding from the Waste Minimisation Seed Fund Over \$2,000 for applications as listed below: #1. Iplex Pipelines NZ Limited, \$9,734	Completed	
6/12/2023	3137	Grants Subcommittee	2.1 Waste Minimisation Seed Fund (over \$2,000) - 2023	2#2	#2. Koru Consulting Limited, \$3,000	Completed	
6/12/2023	3138	Grants Subcommittee	2.1 Waste Minimisation Seed Fund (over \$2,000) - 2023	2 #3	#3. Trick of the Light Theatre Limited, \$20,000	Completed	
6/12/2023	3139	Grants Subcommittee	2.1 Waste Minimisation Seed Fund (over \$2,000) - 2023	2 #4	#4. Tuatua Cafe under Sustainability Trust \$17,266	Completed	
6/12/2023	3140	Grants Subcommittee	2.1 Waste Minimisation Seed Fund (over \$2,000) - 2023	2#5	#5. Valley Meat and Dairy Limited \$25,000	Completed	
6/12/2023	3141	Grants Subcommittee	2.2 Arts and Culture Fund October 2023	1	Receive the information.	Completed	
6/12/2023	3142	Grants Subcommittee	2.2 Arts and Culture Fund October 2023	2	Agree to the allocation of Social and Recreation funding for applications below:	Completed	
6/12/2023	3143	Grants Subcommittee	2.2 Arts and Culture Fund October 2023	3 #1	#1. Aotearoa Digital Arts, \$5,552	Completed	
6/12/2023	3144	Grants Subcommittee	2.2 Arts and Culture Fund October 2023	3 #2	#2. Arohanui Strings-Sistema Hutt Valley, \$15,000	Completed	
6/12/2023	3145	Grants Subcommittee	2.2 Arts and Culture Fund October 2023	3#3	#3. Asian Events Trust, \$5,000	Completed	

6/12/2023	3146	Grants Subcommittee	2.2 Arts and Culture Fund October 2023	3#4	#4. Brass Band Association of New Zealand Incorporated, \$1,697	Completed	
6/12/2023	3147	Grants Subcommittee	2.2 Arts and Culture Fund October 2023	3#5	#5. Choirs Aotearoa New Zealand Trust, \$5,000	Completed	
6/12/2023	3148	Grants Subcommittee	2.2 Arts and Culture Fund October 2023	3#6	#6. Eastern Sound Collective under Ekta NZ Incorporated, \$3,000	Completed	The grant of \$3,000 offered was not enough for the applicant to deliver the proposed project, the grant was not accepted.
6/12/2023	3149	Grants Subcommittee	2.2 Arts and Culture Fund October 2023	3#7	#7. Enjoy Trust, \$15,000	Completed	
6/12/2023	3150	Grants Subcommittee	2.2 Arts and Culture Fund October 2023	3#8	#8. Friends of Futuna, \$3,500	Completed	
6/12/2023	3151	Grants Subcommittee	2.2 Arts and Culture Fund October 2023	3#9	#9. Grammelot Productions under Capital Theatre Productions Trust, \$4,803	Completed	
6/12/2023	3152	Grants Subcommittee	2.2 Arts and Culture Fund October 2023	3#10	#10. Helen Vivienne Fletcher under BATS Theatre Limited, \$5,000	Completed	
6/12/2023	3153	Grants Subcommittee	2.2 Arts and Culture Fund October 2023	3#11	#11. Inverted Citizens Limited, \$5,500	Completed	
6/12/2023	3154	Grants Subcommittee	2.2 Arts and Culture Fund October 2023	3#12	#12. Kaysee Savali under BATS Theatre Limited, \$8,000	Completed	
6/12/2023	3155	Grants Subcommittee	2.2 Arts and Culture Fund October 2023	3#13	#13. Kiwi Arts and Comedy Trust, \$2,500	Completed	
6/12/2023	3156	Grants Subcommittee	2.2 Arts and Culture Fund October 2023	3#14	#14. Lemuria Limited, \$5,000	Completed	
6/12/2023	3157	Grants Subcommittee	2.2 Arts and Culture Fund October 2023	3#15	#15. Mitchell Botting under A Mulled Whine Productions Limited, \$2,500	Completed	
6/12/2023	3158	Grants Subcommittee	2.2 Arts and Culture Fund October 2023	3#16	#16. Pirate and Queen Limited, \$23,575	Completed	
6/12/2023	3159	Grants Subcommittee	2.2 Arts and Culture Fund October 2023	3#17	#17. Pukehuia Charitable Trust, \$3,000	Completed	
6/12/2023	3160	Grants Subcommittee	2.2 Arts and Culture Fund October 2023	3#18	#18. Savage Klub Limited, \$7,470	Completed	
6/12/2023	3161	Grants Subcommittee	2.2 Arts and Culture Fund October 2023	3#20	#20. Shared Lines Trust, \$5,000	Completed	
6/12/2023	3162	Grants Subcommittee	2.2 Arts and Culture Fund October 2023	3#22	#22. Sri Lankan Dance Academy Incorporated, \$3,000	Completed	
6/12/2023	3163	Grants Subcommittee	2.2 Arts and Culture Fund October 2023	3#23	#23. Teherenui Koteka under Kia Mau Festival Limited, \$3,000	Completed	
6/12/2023	3164	Grants Subcommittee	2.2 Arts and Culture Fund October 2023	3#25	#25. Vogelmorn Community Group Charitable Trust, \$1,995.	Completed	
6/12/2023	3165	Grants Subcommittee	2.2 Arts and Culture Fund October 2023	3#26	#26. Wellington Pride Festival Incorporated, \$15,000	Completed	
6/12/2023	3166	Grants Subcommittee	2.2 Arts and Culture Fund October 2023	3#27	#27. Wellington Pride Parade Trust, \$8,000	Completed	
6/12/2023	3167	Grants Subcommittee	2.2 Arts and Culture Fund October 2023	3#28	#28. Wellington Russian Club Charitable Trust, \$1,500	Completed	

6/12/2023	3168 Grants Subcommittee	2.2 Arts and Culture Fund October 2023	3#29	#29. WITCH Charitable Trust, \$8,000	Completed
6/12/2023	3169 Grants Subcommittee	2.2 Arts and Culture Fund October 2023	3#30	#30. Wonderlight Theatre Aotearoa under Performing Arts & Young People Aotearoa, \$10,000	Completed
6/12/2023	3170 Grants Subcommittee	2.2 Arts and Culture Fund October 2023	3#42	#42 QCT \$5,000	Completed
6/12/2023	3171 Grants Subcommittee	2.2 Arts and Culture Fund October 2023	3#19	#19. Shakespeare Globe Centre New Zealand Trust, \$15,000	Completed
6/12/2023	3172 Grants Subcommittee	2.2 Arts and Culture Fund October 2023	3#21	#21. Squash Court Arts Collective Limited, \$4,730	Completed
6/12/2023	3173 Grants Subcommittee	2.2 Arts and Culture Fund October 2023	3#24	#24. The Williams School of Art at Inverloch Incorporated, \$5,000	Completed
6/12/2023	3174 Grants Subcommittee	2.3 Social and Recreation Fund October 2023	1	Receive the information.	Completed
6/12/2023	3175 Grants Subcommittee	2.3 Social and Recreation Fund October 2023	2	Agree to the allocation of Social and Recreation funding for applications below:	Completed
6/12/2023	3176 Grants Subcommittee	2.3 Social and Recreation Fund October 2023	2#1	#1. Amigos Peer Support Group under Wellington After-Care Association Inc, \$1,000	Completed
6/12/2023	3177 Grants Subcommittee	2.3 Social and Recreation Fund October 2023	2#2	#2. Dress for Success Wellington Incorporated, \$5,000	Completed
6/12/2023	3178 Grants Subcommittee	2.3 Social and Recreation Fund October 2023	2#3	#3. dsport Incorporated, \$12,000	Completed
6/12/2023	3179 Grants Subcommittee	2.3 Social and Recreation Fund October 2023	2#4	#4. Greater Brooklyn Residents Association Incorporated, \$1,000	Completed
6/12/2023	3180 Grants Subcommittee	2.3 Social and Recreation Fund October 2023	2#5	#5. Grenada Village Community Association Incorporated, \$1,000	Completed
6/12/2023	3181 Grants Subcommittee	2.3 Social and Recreation Fund October 2023	2#6	#6. Hataitai Residents' Association Incorporated, \$414	Completed
6/12/2023	3182 Grants Subcommittee	2.3 Social and Recreation Fund October 2023	2#7	#7. Holocaust Centre of New Zealand Incorporated, \$3,000	Completed
6/12/2023	3183 Grants Subcommittee	2.3 Social and Recreation Fund October 2023	2#8	#8. Island Bay Residents Association Incorporated, \$1,000	Completed
6/12/2023	3184 Grants Subcommittee	2.3 Social and Recreation Fund October 2023	2#9	#9. Malu O Alo Fā, \$35,000	Completed
6/12/2023	3185 Grants Subcommittee	2.3 Social and Recreation Fund October 2023	2#10	#10. Newlands Toy Library Incorporated, \$1,000	Completed
6/12/2023	3186 Grants Subcommittee	2.3 Social and Recreation Fund October 2023	2#11	#11. Newtown Residents Association Incorporated, \$1,000	Completed
6/12/2023	3187 Grants Subcommittee	2.3 Social and Recreation Fund October 2023	2#12	#12. Ngaio Crofton Downs Residents Association Incorporated, \$1,000	Completed
6/12/2023	3188 Grants Subcommittee	2.3 Social and Recreation Fund October 2023	2#13	#13. Onslow Residents' Community Association Incorporated, \$1,000	Completed
6/12/2023	3189 Grants Subcommittee	2.3 Social and Recreation Fund October 2023	2#14	#14. Owhiro Bay Residents Association Incorporated, \$1,000	Completed

6/12/2023	3190 Grants Subcommittee	2.3 Social and Recreation Fund October 2023	2#15	#15. Renew Communities Trust, \$10,000	Completed	
6/12/2023	3191 Grants Subcommittee	2.3 Social and Recreation Fund October 2023	2#16	#16. Social Change Collective, \$5,000	Completed	
6/12/2023	3192 Grants Subcommittee	2.3 Social and Recreation Fund October 2023	2#17	#17. Strathmore Park Residents Association Incorporated, \$892	Completed	
6/12/2023	3193 Grants Subcommittee	2.3 Social and Recreation Fund October 2023	2#18	#18. The Tawa Residents' Association Incorporated, \$1,000	Completed	
6/12/2023	3194 Grants Subcommittee	2.3 Social and Recreation Fund October 2023	2#19	#19. Thorndon Residents Association Incorporated, \$1,000	Completed	
6/12/2023	3195 Grants Subcommittee	2.3 Social and Recreation Fund October 2023	2#20	#20. Wellington Access Broadcasting Society Incorporated, \$3,500	Completed	
6/12/2023	3196 Grants Subcommittee	2.3 Social and Recreation Fund October 2023	2#21	#21. Wellington Homeless Women's Trust, \$20,000	Completed	
6/12/2023	3197 Grants Subcommittee	2.3 Social and Recreation Fund October 2023	2#22	#22. Wellington Inner-City Residents and Business Association Incorporated, \$1,000	Completed	
6/12/2023	3198 Grants Subcommittee	2.3 Social and Recreation Fund October 2023	2#23	#23. Wellington Residents' Association Network under Ngaio Union Church, \$1,000	Completed	
6/12/2023	3199 Grants Subcommittee	2.3 Social and Recreation Fund October 2023	2#24	#24. Wellington Senior Citizens Health and Happiness Association Inc, \$3,000	Completed	
6/12/2023	3200 Grants Subcommittee	2.3 Social and Recreation Fund October 2023	2#25	#25. Wellington Badminton, \$2,000	Completed	
6/12/2023	3201 Grants Subcommittee	2.4 Social and Recreation Fund extending DCM funding to June 2025	1	Receive the information.	Completed	
6/12/2023	3202 Grants Subcommittee	2.4 Social and Recreation Fund extending DCM funding to June 2025	2	Note that the current DCM multiyear contract is out of sync with other multiyear contracts; this report seeks to correct alignment to support more informed and equitable decision making.	Completed	We await confirmation in LTP of 2024/25 funding and in discussion with DCM on reporting outcomes.
6/12/2023	3203 Grants Subcommittee	2.4 Social and Recreation Fund extending DCM funding to June 2025	3	Note that this decision is being sought now so that should the application not be successful, DCM have sufficient lead in time to try to find alternate funding sources.	Completed	
6/12/2023	3204 Grants Subcommittee	2.4 Social and Recreation Fund extending DCM funding to June 2025	4a	Recommend that Te Kaunihera o Pōneke Council: a) Agree to allocate \$543,345 of funding from the FY24/25 Social and Recreation Fund for Downtown Community Ministry Inc (trading as DCM)	Completed	