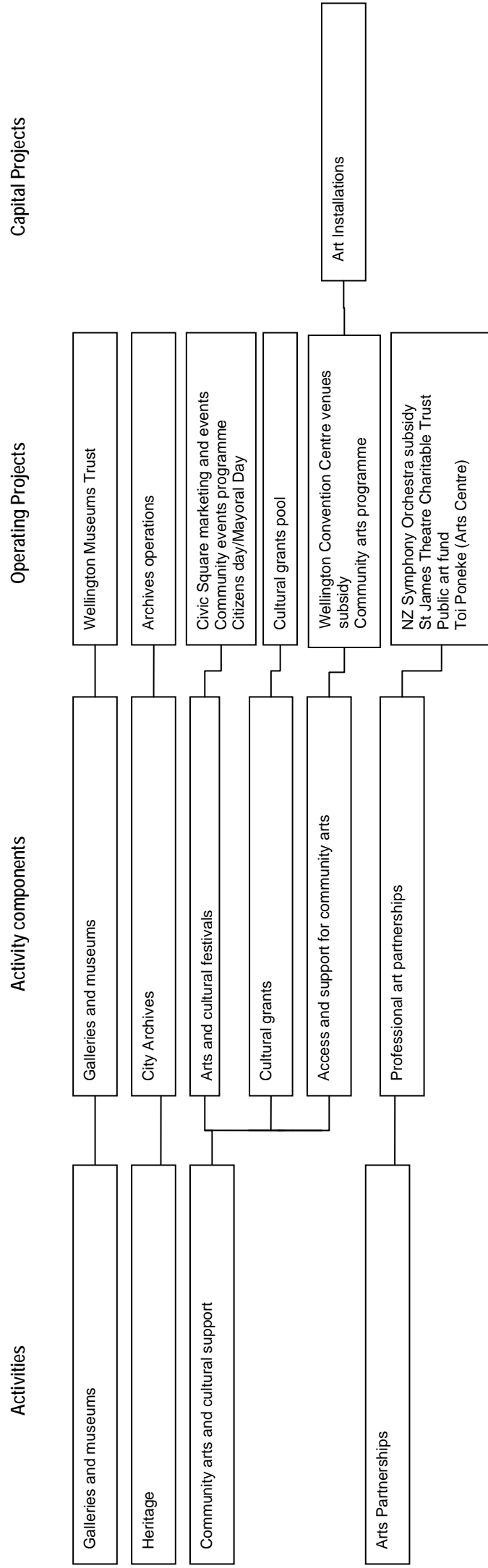


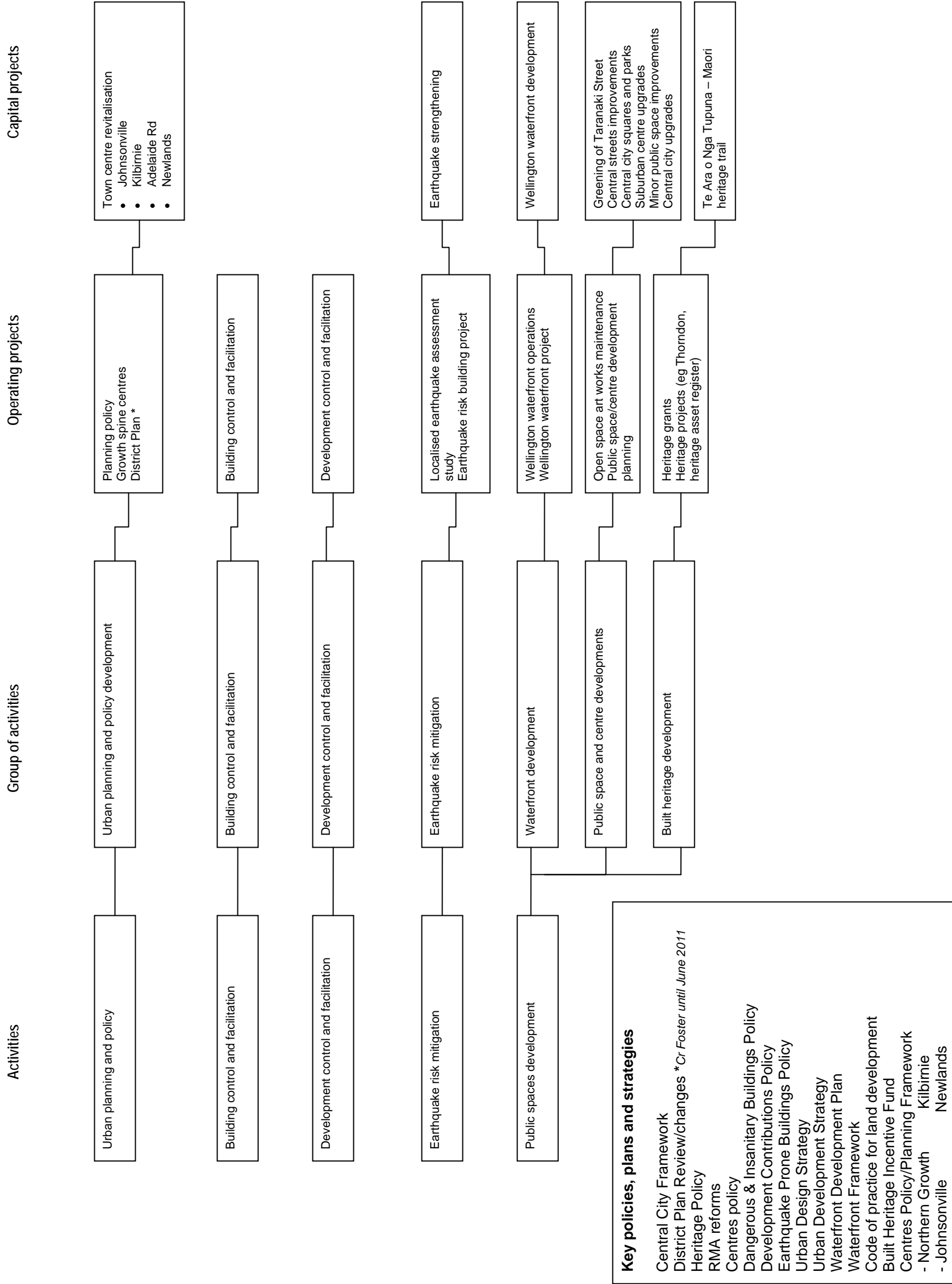
## Arts and Culture



**Asset Management Plans**  
Public Art & Memorials

**Key policies, plans and strategies**  
Cultural Wellbeing Strategy  
Furnishings Art Collection Policy  
Museums Policy  
Public Art Policy  
Street Performance & Busking Policy

**Built Environment**



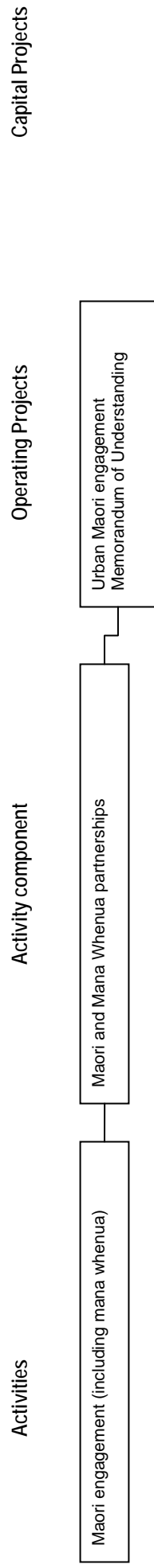
### Climate Change and Energy



**Key policies, plans and strategies**

- Climate Change Action Plan
- Forest Sink Covenants
- Carbon Management Policy
- Energy Management Plan

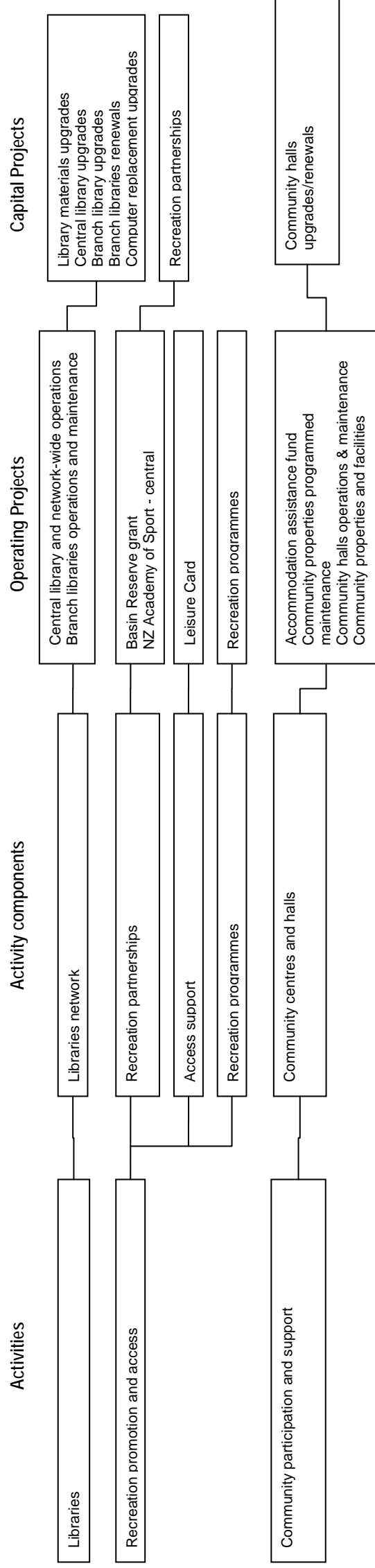
**Community engagement**



**Key policies, plans and strategies**  
 Engagement Policy (incl. Consultation Policy  
 Advisory Groups (Roles & Responsibilities)  
 Access to Venues  
 Iwi Engagement  
 Volunteers

**Note:** This Portfolio will also apply to work across each of the other Portfolios

## Community Facilities



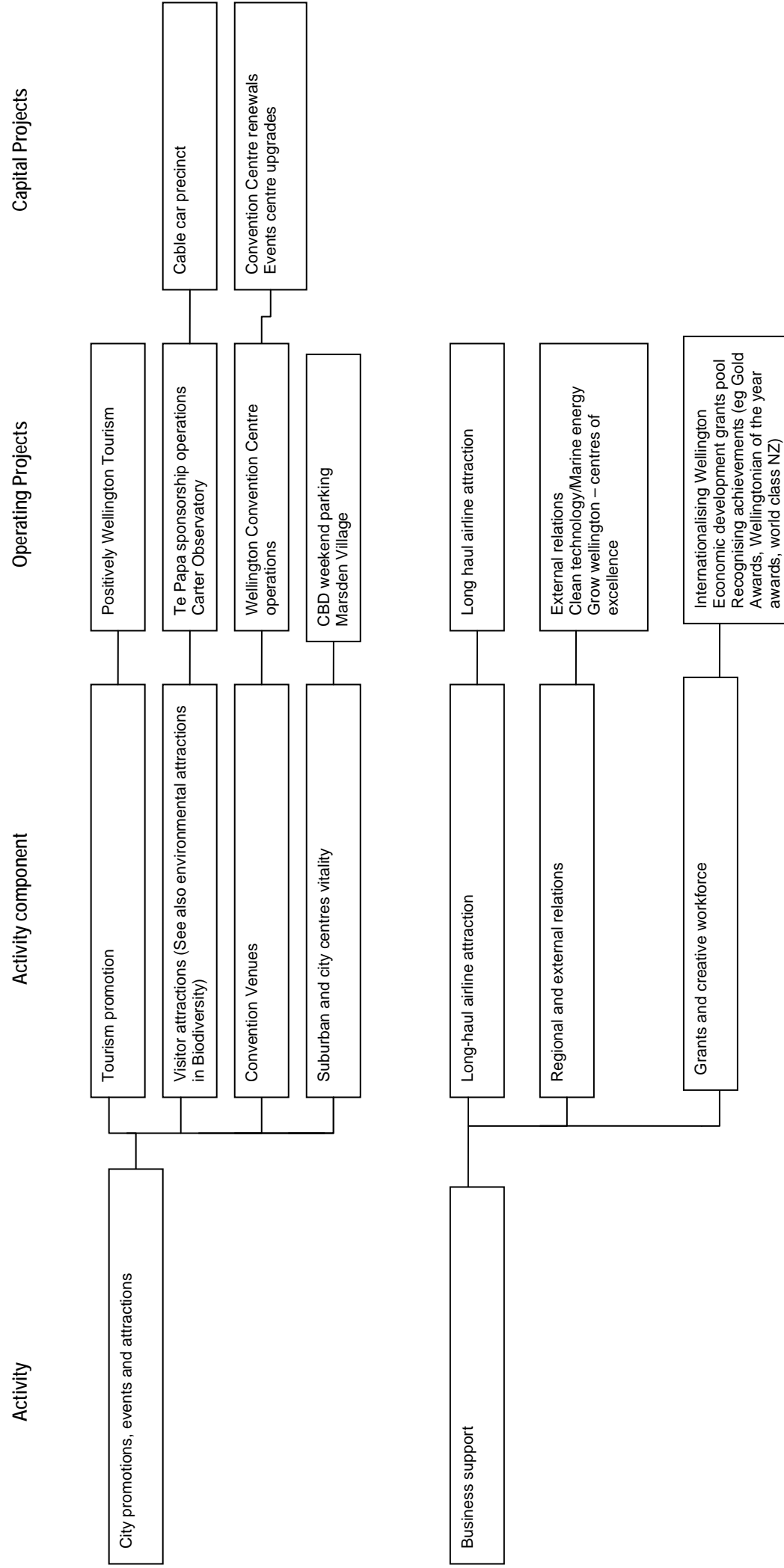
**Key policies, plans and strategies**

- Leases Policy for Community & Recreational Groups
- Libraries Policy
- Passport to Leisure
- Community Facilities Policy (libraries & community centres)

**Asset Management Plans**

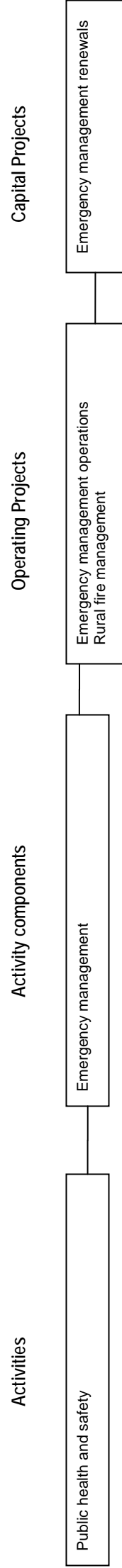
- Branch Library Properties
- Community Centres, Halls & Childcare Centres

## Economy



- Key policies, plans and strategies**
- Casino Policy
  - Economic Development Strategy
  - International Relations Policy
  - Trading in Public Places Policy
  - Venues Governance
  - Review of Grow Wellington
  - Grow Wellington SOI
  - Economic Grants & Creative Workforce
- Asset Management Plans**
- Wellington Convention Centre
  - Civic & Commercial Property

### Emergency Management



**Key policies, plans and strategies**  
Fire Prevention Bylaw  
Regional WEMO Activities  
WEMO Volunteers Programme

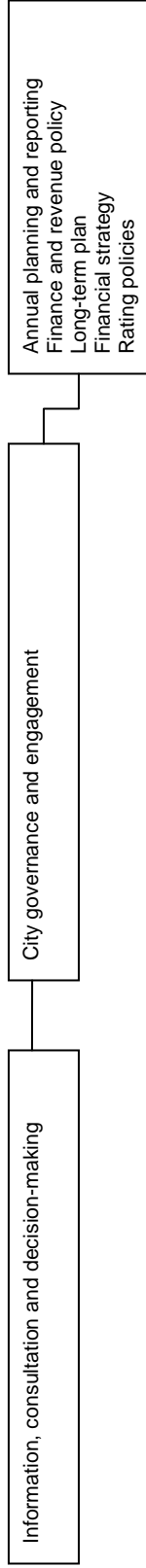
**Finance**

Capital Projects

Operating Projects

Activity component

Activities

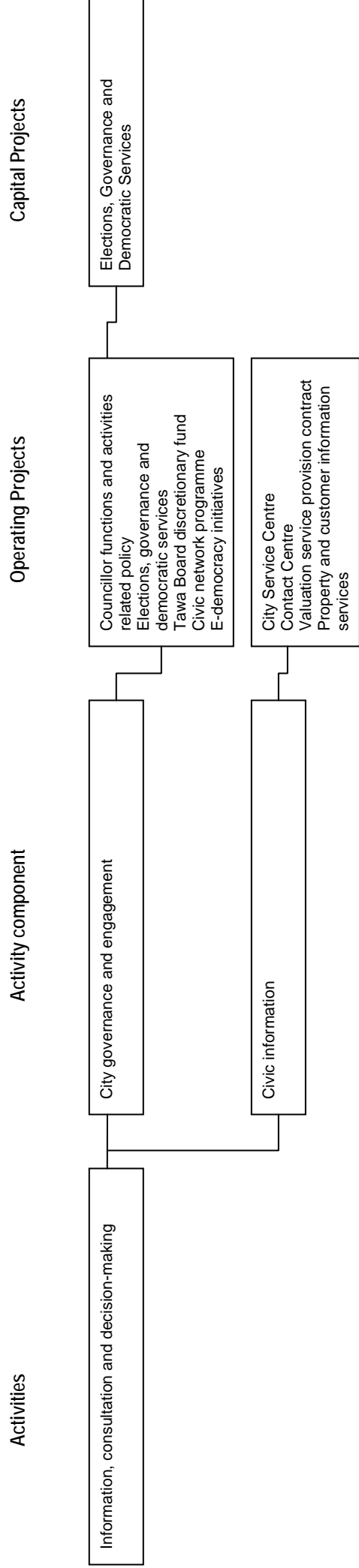


**Key policies, plans and strategies**

- Funding Impact Statement & Rating Policy
- Investment & Liability Policy
- Rates Postponement Policy
- Rates Remission Policy
- Revenue & Financing Policy
- Significance Policy
- Financial Strategy (proposed under Local Government Act Amendment – Transparency, Accountability and Fiscal Management (TAFM))



**Governance**



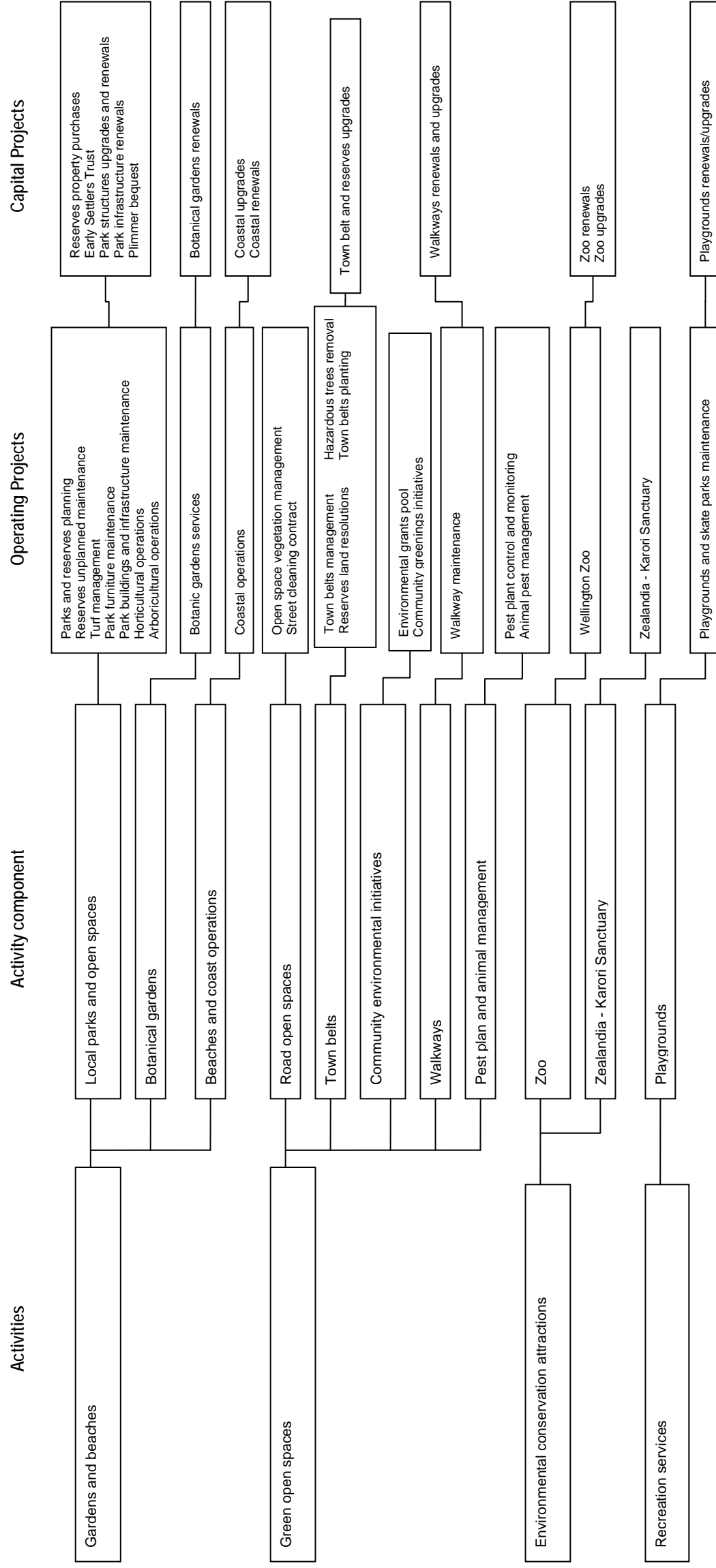
- Key policies, plans and strategies**
- Elections Hoardings Policy
  - Governance Strategy
  - Representation review
  - Standing Orders
  - Governance Statement
  - Introduction Bylaw
  - Quarterly Report
  - CCO Governance matters

**ICT**



**Key policies, plans and strategies**  
ICT Policy  
Ultra Fast Broadband Initiatives

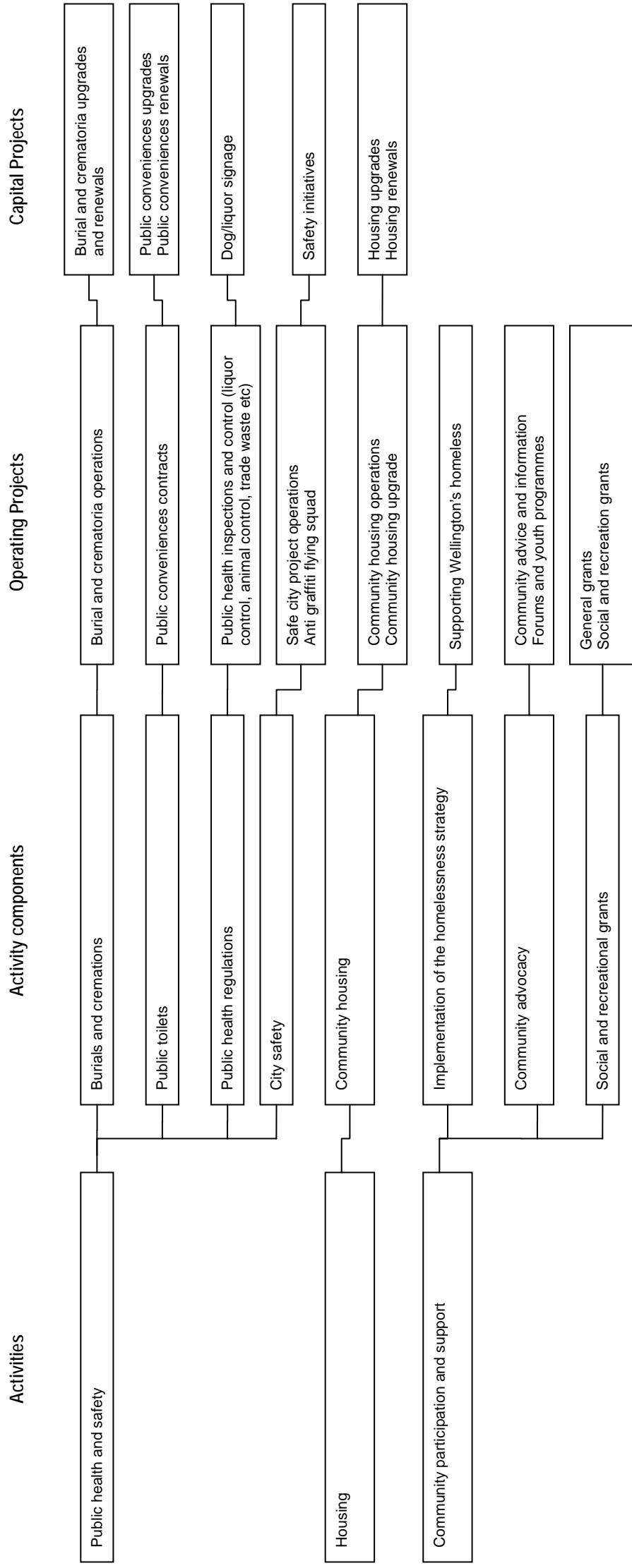
**Natural Environment**



- Key policies, plans and strategies**
- Track Recreation Activities Policy
  - Verges Policy
  - Open Spaces Covenant Policy
  - Charles Plimmer Bequest
  - Suburban Reserves Management Plan
  - Classification of Land
  - Biodiversity Action Plan
  - Botanic Gardens, Anderson Park and Bolton St Management Plan
  - Capital Spaces
  - Environment Strategy
  - Northern Reserves Management Plan
  - Ohariu Valley Rural Community Plan
  - Horokiwi Rural Community Plan Makara Rural
- Community Plan South Karori Rural Community Plan**
- Open Spaces Access Plan
  - Open Space Naming Policy
  - Otaru/Wilton's Bush Management Plan
  - Outer Green Belt Management Plan
  - Pest Management Plan
  - Playgrounds Policy
  - South Coast Management Plan
  - Town Belt Management Plan
  - Town Belt Reinstatement Policy
  - Recreation Policy Review
  - Social & Recreation Strategy (Part)

- Asset Management Plans**
- Public Toilets & Pavilions
  - Wellington Zoo Assets
  - Play Areas
  - Open Space
  - Botanic Gardens
  - Coastal Assets

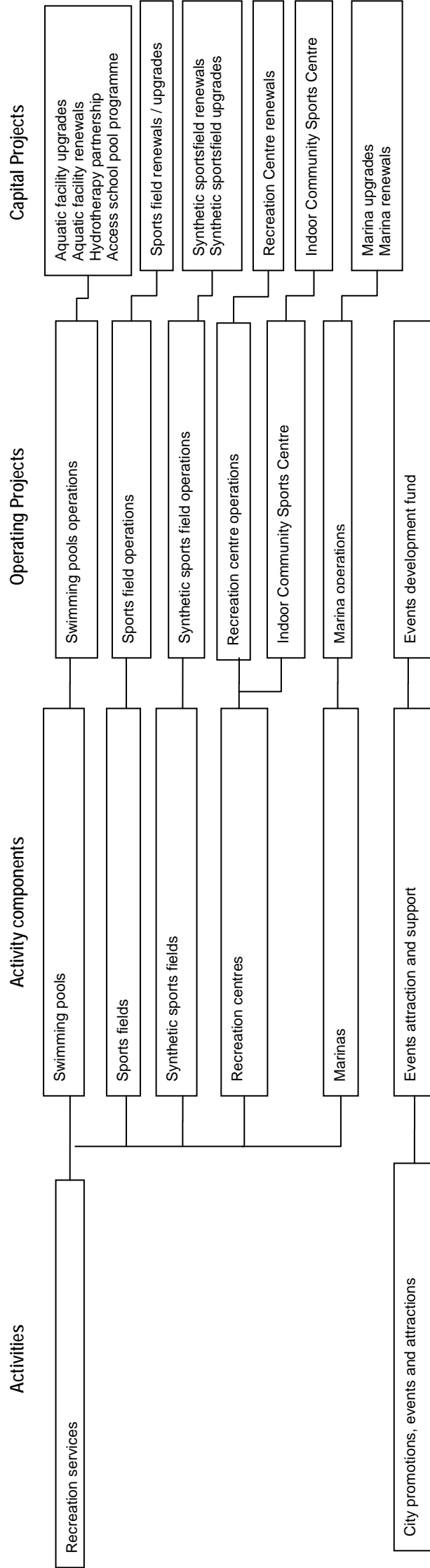
**Social**



- Key policies, plans and strategies**
- Animals Bylaw
  - Liquor Bylaw
  - Local Public Health Bylaw
  - Public Places Bylaw
  - Alcohol Management Plan
  - Betty Campbell Accommodation Assistance Fund
  - Commemorative Policy
  - Dog Policy
  - Early Childhood Centres Policy
  - Gambling Venues Policy
  - Accessibility
  - Diversity
  - Homelessness Strategy
  - Housing (Social Services) Policy
  - Liquor Licensing Policy
  - Mobility Parking Policy
  - Older Person's Policy
  - Public Convenience Policy
  - Social & Recreation Strategy (Lead)
  - Courtenay Place Project
  - City Safety Initiatives

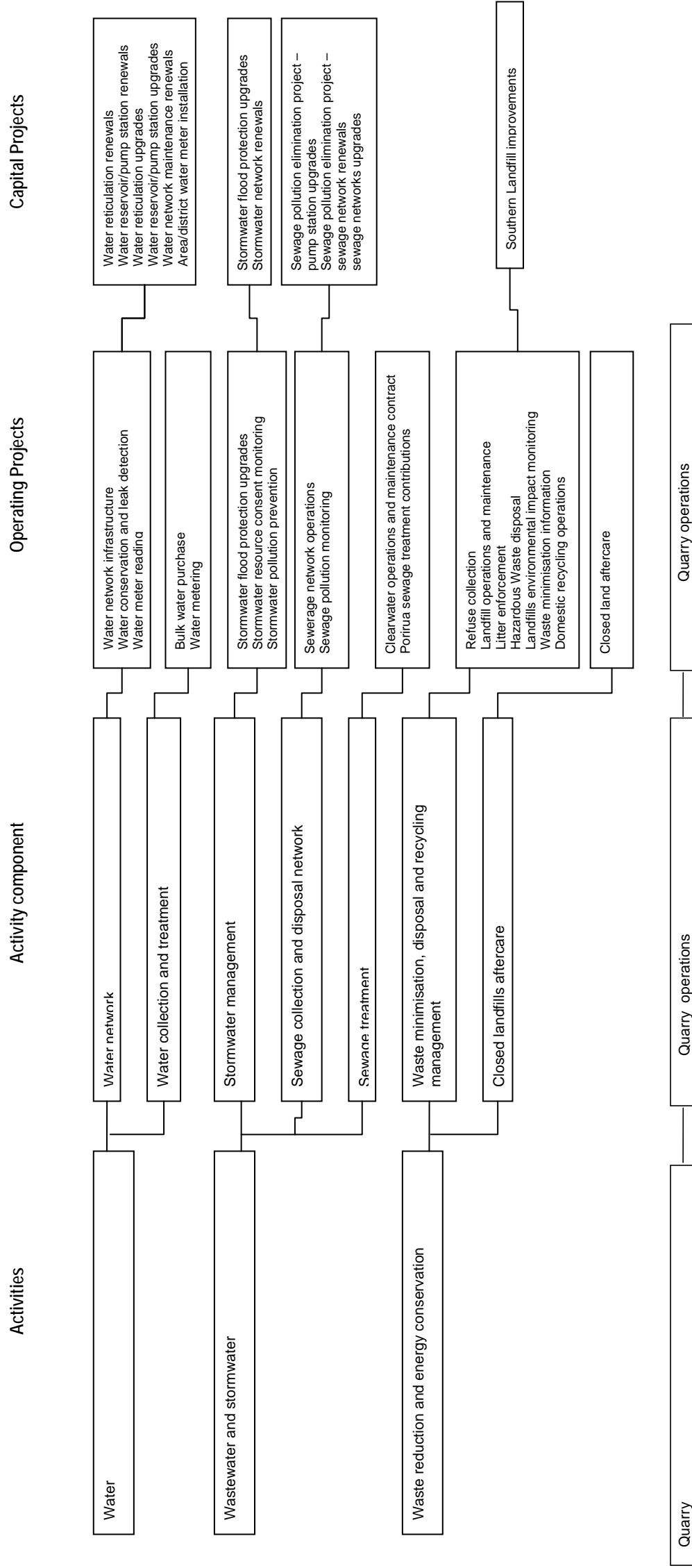
- Asset Management Plans**
- Public Toilets and Pavilions
  - City Housing
  - Cemetery

**Sport and Events**



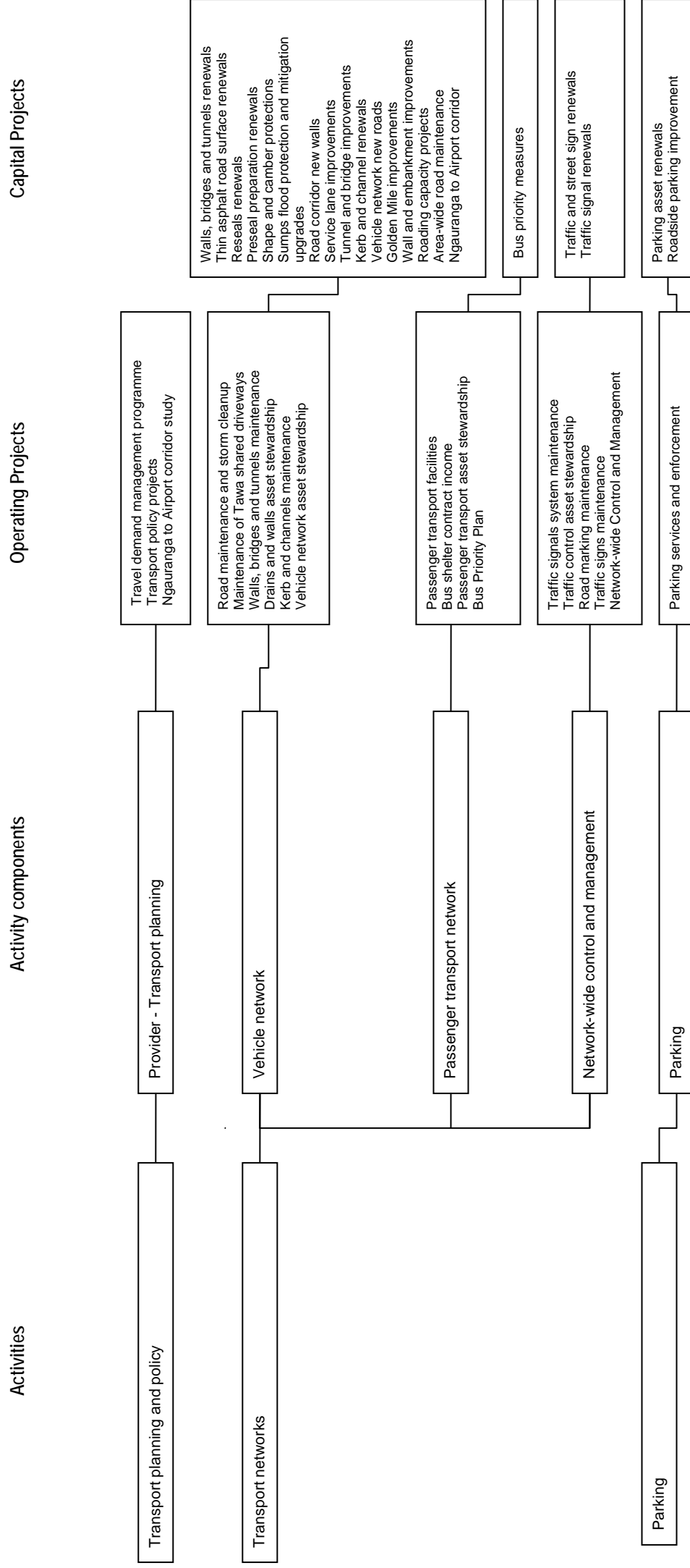
- Key policies, plans and strategies**
- Social & Recreation Strategy (part)
  - Circuses Policy
  - Community Facilities (pools)
  - School Partnership Programme
  - Partnership Investment in Artificial Turfs
  - Aquatic Facilities – sessionalisation
  - Events Development Fund
  - Events Policy
- Asset Management Plans**
- Coastal Assets
  - Swimming Pools
  - Recreation Centres
  - Sportsfields

Three Waters and Waste



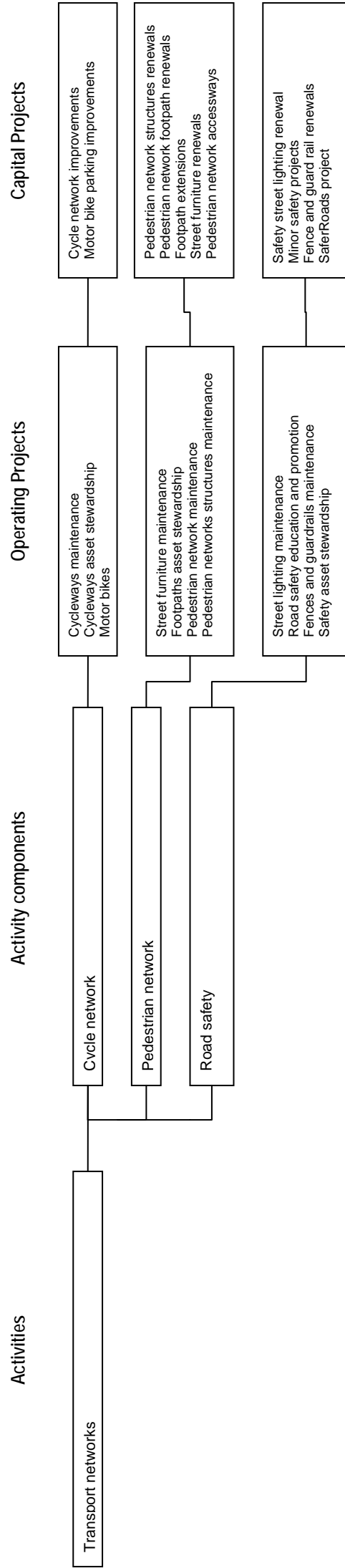
- Key policies, plans and strategies**
- Quarry
  - Water Services Bylaw
  - Waste Management Bylaw
  - Trade Waste Bylaw
  - Collection & Transportation of Waste Bylaw
  - Water & Sanitary Services
  - Closed Landfills Policy
  - Laterals Policy
  - Liquid Waste Management Plan
  - Solid Waste Management Plan
  - Inflow/Infiltration
  - Trade Waste Charges Policy
  - Water Conservation
  - Waste Minimisation
  - Recycling
  - WCC/Porirua Joint Landfill activities
  - Capacity Activities and Functions
  - Litter
  - Asset Management Plans**
  - Three Waters
  - Waste Management

**Transport (public transport and roading)**



- Asset Management Plans**
- Transport
  - Key policies, plans and strategies**
  - Parking Policy
  - Road Encroachment & Sale Policy
  - Road Naming Policy
  - Transport Strategy
  - Ngauranga to Airport Corridor Plan
  - Regional Land Transport Strategy
  - Regional Public Transport Strategy
  - Bus Priority Measures
  - Manners Mall
  - Basin Reserve Transport Improvements
  - Traffic Bylaw
  - Wellington City Public Transport Review (with GWRC)
  - Regional Transport Strategy
  - Travel Demand Management Plan

Walking, cycling, motorcycling and safety



**Key policies, plans and strategies**

- Cycling Policy
- Footpath Management Policy
- Walking Policy
- Speed Limits
- Speed Limits Bylaw
- Regional Road Safety Plan
- Asset Management Plan**
- Transport