



Absolutely Positively Right By Your Side

Wellington's RWC 2011 newsletter

ISSUE 2

JULY 2009

Welcome to...

Absolutely Positively Right by Your Side – a newsletter designed to keep you informed about the Wellington Region's planning and progress towards Rugby World Cup 2011.

This is the second of a number of newsletters being produced in the lead up to Rugby World Cup 2011.

Coordination of the Wellington Region's planning for Rugby World Cup 2011 is being handled by a Wellington City Council project team.

If you would like to keep up to date with information around Rugby World Cup 2011, please email your details to: RWC2011Wellington@wcc.govt.nz or visit www.wellington.govt.nz/services/events/rwc/rwc.html

RWC 2011 Wellington Local Business Forum

Her Worship the Mayor of Wellington, Kerry Prendergast and Wellington City Council Chief Executive Garry Poole invite you to attend a Rugby World Cup 2011 Wellington Local Business Forum. The forum will give you the chance to discuss the many opportunities and challenges the Rugby World Cup 2011 will provide:

The forum will cover:

- Rugby World Cup 2011 Update – Martin Snedden, Chief Executive, Rugby New Zealand 2011
- Major Events Management Act – Robert Rendle, Senior Solicitor, Ministry of Economic Development
- Update on planning in the Wellington region for Rugby World Cup 2011
- An open forum to discuss issues, questions and ideas.

Where: Ilott Theatre, Wellington Town Hall
Time: 5.30 – 7pm
Date: Thursday 23 July
RSVP to: RWC2011Wellington@wcc.govt.nz

Numbers are limited so please ensure you RSVP.

Please join us following the formal presentation for light refreshments.

School Holidays 2011

The length of each school term has been adjusted for 2011. Terms 1 and 2 are slightly longer and Term 4 is two weeks shorter.

This adjustment has been made to align the October Term holiday with the final stages of the Rugby World Cup 2011 Tournament.

Primary and Intermediate Schools

Term 1 – Tuesday 1 February and Monday 7 February – Friday 15 April
Term 2 – Monday 2 May – Friday 15 July
Term 3 – Monday 1 August – Friday 7 October
Term 4 – Tuesday 25 October – no later than Tuesday 20 December.

Secondary and Composite Schools

Term 1 – Tuesday 1 February and Monday 7 February – Friday 15 April
Term 2 – Monday 2 May – Friday 15 July
Term 3 – Monday 1 August – Friday 7 October
Term 4 – Tuesday 25 October – no later than Tuesday 13 December.

Rugby New Zealand 2011 – Staff Appointment

Rugby New Zealand 2011 has appointed Michelle Tapper – Team Services Manager. The focus of this role is team liaison, training venue selection and management.

SKY NZ Rugby World Cup 2011 Host Broadcaster

Rugby World Cup Limited (RWCL) has announced that SKY Television New Zealand will be the host broadcaster for all matches of Rugby World Cup 2011 in New Zealand.

Under the deal, SKY will work with RWCL to produce comprehensive coverage of all 48 matches. This will be distributed to RWCL's broadcast partners around the world in high definition.

Training Venues

The region has a range of responsibilities hosting Rugby World Cup 2011. A key responsibility is the provision of training venues to host the nine teams who will play in Wellington throughout the Tournament.

The Wellington region has an extensive range of high quality training venues, including gymnasiums and swimming pools.

Wellington City Council is undertaking significant venue upgrades including installation of synthetic turf facilities and the construction of a 12 court Indoor Community Sports Centre (ICSC). The ICSC has now cleared all resource consent and planning obstacles. Work is expected to commence in November 2009 with opening scheduled for mid 2011.



Picture: Indoor Community Sports Centre, Cobham Drive

The Te Rauparaha Arena located in Porirua City will be a key venue for team training. This facility features four indoor courts in two separate auditoriums, with international standard flooring, meeting rooms, 90 seat theatre and a fitness centre. The facility also has an indoor aquatics centre with lane pool, spas and saunas. It is located within two kilometres of Porirua Stadium.

Team Management Visits

During 2009 and 2010, team management from the top 12 confirmed teams (growing to 20 teams in 2010), will be visiting the centres involved in the hosting of Rugby World Cup 2011.

Business Opportunities

Wellingtonians know our region is a place of possibilities, where intellect, creativity, lifestyle, commerce and governance thrive. We are looking forward to Rugby World Cup 2011. It offers tremendous opportunities to showcase ourselves to the world.

It is expected to bring 60,000 visitors, 2500 media and a global TV audience of more than 4 billion to Wellington and New Zealand. The direct economic benefit for Wellington during the Tournament is estimated to be in the tens of millions.

The indirect benefit from the global exposure will be far greater.

It is essential that we maximise the business opportunities from Rugby World Cup 2011, for individual businesses and the region as a whole. We also need to make sure we make the most of opportunities from the Tournament itself and the long term benefit from our global exposure.

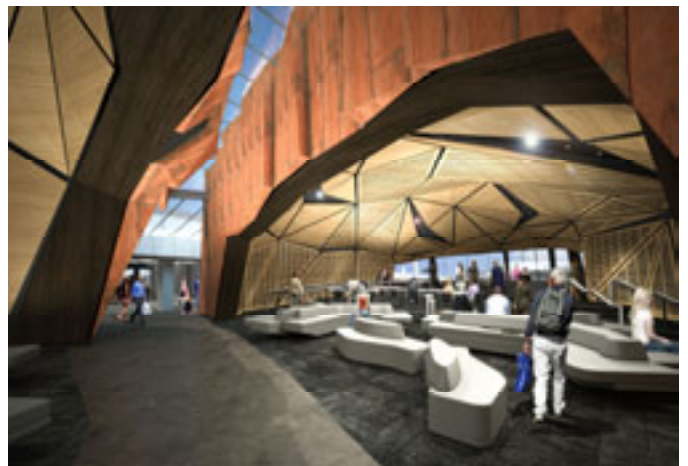
Whether you are based in Wellington or somewhere in New Zealand or around the world, Rugby World Cup 2011 provides opportunities for your business to get connected. Grow Wellington is the region's economic development organisation and we are working in partnership with the Chambers of Commerce and the Employers and Manufacturers Association. We have already started work on providing businesses with all the information and connections they need to ensure it's not just New Zealand rugby that benefits but also your business and our economy. If you are a regional business with growth aspirations wanting to leverage off the opportunities the Rugby World Cup offers, keep an eye on our newsletters as we provide more details over the coming months.

Wellington International Airport

Wellington International Airport will be ready for the projected increase in traffic during Wellington's hosting of Rugby World Cup games.

Its international terminal upgrade is in its final stages with the construction of the new passenger lounge well underway.

Improvements to the international terminal will double the number of passengers being processed from 500 to 1000 people per hour. The terminal's new passenger gates will have the flexibility to swing between domestic and international services, which will suit large events such as the Rugby World Cup.



Picture: Interior Wellington International Airport