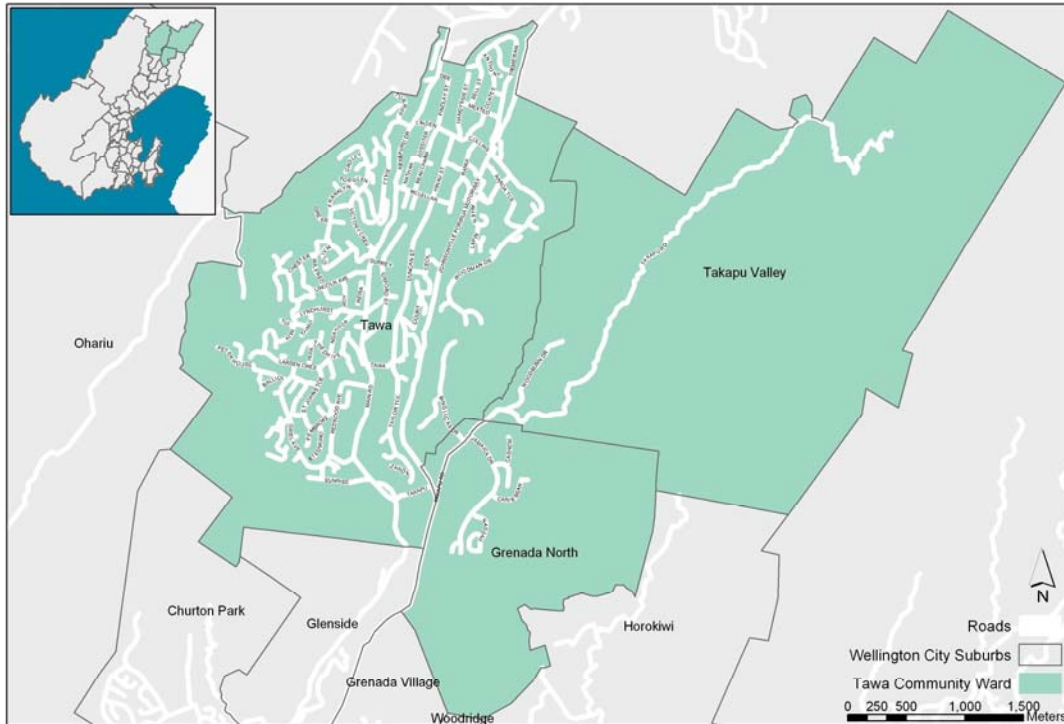


TAWA COMMUNITY BOARD PLAN 2005-2007



Bucket Tree, 1 Boscobel Lane, Tawa

MAP OF COMMUNITY BOARD AREA



The Community Board area covers the suburbs of Tawa, Grenada North and Takapu Valley.

History of Tawa

The Borough of Tawa takes its name from the native Tawa tree (*Beilschmiedia tawa*) that once covered the area. The name Tawa Flat was first used in 1854 in the Wellington Provincial Gazette. In the 1941 Local Body elections, Tawa Flat was part of Makara County, which also included Porirua and Titahi Bay. In 1953 Tawa Flat and Linden became an independent borough. After rapid housing expansion in the 1950s outside the Tawa Flat area, the name was changed (on Feb 23, 1959) to the Borough of Tawa. The Tawa Borough Council negotiated for its own water and sewage system to accommodate its expansion into Redwood and Linden. On the 3 October 1988 the Local Government Commission indicated the Borough of Tawa would be amalgamated with Wellington City.

Cover Photo:

Cupressus macrocarpa / *Macrocarpa* "The Bucket Tree" registered as a notable tree ("Earps Bucket tree"), is well over a hundred years old. Its shape was probably originally pruned by young immigrant Frederick Westbury in the 1880s, who worked for the land owner, William Earp.

OVERVIEW

The Tawa Community Board Plan is a summary of the priorities of the Tawa Community Board. The objective of the plan is to prioritise the Community Board activities and communicate these to the Tawa community.

This plan is for the period July 2005 to October 2007.

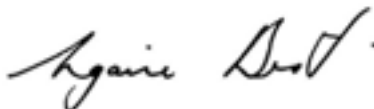
Welcome to the Tawa Community Board Plan

Introduction from the Chairperson

Tawa is fortunate to have a democratically elected Community Board to advocate for, and on behalf of, our community. This gives us the opportunity to plan for the future of our local community. Whilst planning must be kept in the context of the city and region, we can set our sights high and plan for the Tawa we want to see in the future.

This Community Board Plan is intended to be a living document that will change as the needs of Tawa change. This is the first Community Board Plan and we acknowledge that we may not get it just right first time. We have planned regular review periods so that together all Tawa Residents can shape the direction of our community. I invite you to partner with us to 'enhance and maintain pride and place'.

Yours sincerely



Ngaire Best, Tawa Community Board Chairperson

Our Vision

Enhance and maintain pride and place

Our Mission

Working with the community to achieve our vision

Role of the Community Board

The role of the community board is to:

- represent, and act as an advocate for, the interests of its community
- consider and report on all matters referred to it by the territorial authority, or any matter of interest or concern to the community board
- maintain an overview of services provided by the territorial authority within the community
- prepare an annual submission to the territorial authority for expenditure within the community
- communicate with community organisations and special interest groups within the community
- undertake any other responsibilities that are delegated to it by the Wellington City Council.

CONTACT

DETAILS

Community Board Members

This elected community board represents the interests of the Tawa Community. The members of the Tawa Community Board for the 2004 – 2007 triennium are as follows:

Ngaire Best - Chair

Phone: (04) 232 9000

Mobile: 027 449 6925

Email: ngairebest@xtra.co.nz

Penny Devine

Mobile: 021 148 1911

Email: devine.wgtn@clear.net.nz

Tony Parker

Phone: (04) 232 7956

Mobile: 021 449 067

Email: tmparker@paradise.net.nz

Malcolm Sparrow

Phone: (04) 232 5030

Fax: (04) 232 5030

Mobile: 021 144 3155

Email: malcolm@tawalink.com

Graeme Sutton

Phone: (04) 232 7432

Fax: (04) 232 7434

Mobile: 027 443 6447

Email: gsutton@clear.net.nz

Robert Tredger

Phone: (04) 232 5982

Mobile: 021 181 4499

Email: tredger@actrix.gen.nz

Councillor Hayley Wain

Phone: (04) 232 0436

Mobile: 027 274 3610

Email: hayley.wain@wcc.govt.nz

Councillor Robert Armstrong

Phone: (04) 232 5762

Mobile: 027 232 7170

Email: robert.armstrong@wcc.govt.nz

STAKEHOLDERS

The stakeholders of Tawa Community Board are listed on this page.

Schools, colleges and kindergartens

- Tawa College
- Tawa School
- Redwood School
- Tawa Intermediate School
- Greenacres School
- Linden School
- Hampton Hill School
- St Francis Xavier School
- Tawa Kindergarten
- Tawa-Linden Playcentre
- Tawa Montessori Preschool
- Brian Webb Kindergarten
- Beanstalk Kindergarten
- Tui Park Kindergarten
- Tawa Central Kindergarten

Sports clubs

- Tawa Rugby Football Club
- Tawa Junior Rugby Football Club
- Tawa Cricket Club
- Tawa Soccer and Softball Clubs
- Tawa Squash Club
- Tawa Bowling Club
- Tawa Services Bowling Club
- Tawa Gymfun Gymnastics Club
- Tawa Hockey Club
- Tawa-Lyndhurst Tennis Club
- Linden Tennis Club
- Tawa Badminton Club
- Tawa Swimming Club

Churches

- Tawa Baptist Church
- Tawa Gospel Hall
- Tawa New Life Church
- Tawa Union Parish – St Stephen's
- Tawa-Linden Anglican Churches – St Christopher's and St Peter's
- Our Lady of Fatima Catholic Church
- Salvation Army

Residents associations and residential communities of interest

- Tawa Progressive Association and Ratepayers
- Tawa Business Association
- Friends of Tawa Bush Reserves
- Tawa RSA
- Lions club of Tawa
- Rotary club of Tawa
- Linden
- Lindenvale
- Westhaven
- Greenacres
- Tawa
- Redwood
- Sundale
- Grenada North Takapu Valley
- Grenada North Industrial Community

Other

- Police (Tawa community constable)
- Tawa Historical Society
- NZ Fire service
- WEMO
- Wellington City Council
- Greater Wellington Regional Council
- Local Government New Zealand
- Porirua City Council
- Hutt City Council
- Ministry for the Environment
- Department of Conservation
- Federated Farmers
- Individual farmers
- Positively Wellington Tourism
- Tourism operators
- Bus and Coach Association
- Tranz Metro
- Transit New Zealand
- Tawa – Linden Plunket
- U3A – Tawa
- Tawa Senior Citizens
- Probus
- Atohata Prison
- Tawa Medical Centre
- Greypower
- Kapi Mana Bridge Club
- Tawa Community Theatre

KEY

STAKEHOLDER GROUPS

The key stakeholders groups of Tawa Community Board are listed on this page.

Key Stakeholders

We have selected eight key stakeholder groups that we believe are key to the future of Tawa. We plan to develop and maintain strong relationships with these stakeholders by assigning members of the Board as a liaison with these groups.

Territorial Local Authorities

(Ngaire Best / Robert Tredger)

Capital and Coast District Health Board

(Graeme Sutton)

Tawa Progressive and Ratepayers Association

(Ngaire Best / Malcolm Sparrow)

Business association

(Tony Parker / Robert Tredger)

Service and sports clubs

(Penny Devine / Robert Armstrong)

Church and community groups

(Malcolm Sparrow / Hayley Wain)

Educational providers

(Malcolm Sparrow / Hayley Wain)

Emergency Management Services

(Robert Tredger / Penny Devine)

How we will communicate with stakeholders

We will communicate with our stakeholders using the following methods:

- The Internet
- Letters
- Email
- Invite stakeholder groups to our meetings
- Attend stakeholder group meetings
- Using a notice board in the Tawa library

WORK PLAN

This section outlines the issues that we believe the Tawa Community is facing. We plan to actively pursue ways to overcome high priority issues.

Work programme 2005-2007

The work plan identifies the programme of work for the Tawa Community Board over the next two years. Key issues in the Tawa community have been identified and prioritised by the Board Members. Each action point has a Tawa Community Board member assigned to ensure that the action objective is achieved within the timeframe.

The **time frames** for action are defined as:

Short term	Less than 6 months
Medium term	6 to 12 months
Long term	over 12 months

Key Achievement Areas

Issues and actions are broken down by Key Achievement Areas to reflect the Wellington City Council Annual Plan structure. These are:

- Built Environment
- Community, Health and Safety
- Culture and Arts
- City Economy
- Natural Environment
- Resources and Waste
- Recreation and Leisure
- Transport
- Governance and Citizen Information

WORK PLAN

All prioritised issues are categorised as being 'priority' with everything else being classified as business as usual activity.

Built Environment

Issues	Actions	Community Board Member Liaison	Timeframe	Comments
Priority Issues 2005/06				
<i>Something Unique / sense of place</i> <ul style="list-style-type: none"> • Retain Tawa's history • Maintaining and enhancing community pride • Enhancing the 'its all here' concept i.e. shopping, healthcare, entertainment, recreation. 	<ul style="list-style-type: none"> • Build on the '<i>Spring into Tawa</i>' festival • Advocating the improvement of sporting facilities • Become an active participant in the Kenepuru Centre of Excellence for Health Steering Group 	Tony Parker and Malcolm Sparrow	Short term	
		Penny Devine	Medium Term	
		Graeme Sutton	Ongoing	
<i>Graffiti</i> <ul style="list-style-type: none"> • Tagging has to be reduced or stamped out 	<ul style="list-style-type: none"> • Investigate future options to removing tagging towards a zero tagging policy. • Help establish the Tawa guardians 	Robert Tredger	Ongoing	
		Robert Tredger	Ongoing	

Business as usual activities

- Advocate for street furniture, especially between the retirement home and shopping centre.
- Make a submission to the District Plan review
- Continue to promote Tawa village by having something that sets it apart from other Wellington suburbs.

Community Health and Safety

Issues	Actions	Community Board Member Liaison	Timeframe	Comments
Priority Issues 2005/06				
<i>Youth</i> <ul style="list-style-type: none"> • High percentage of youth has nowhere to go. • Number of activities for young people in Tawa. 	<ul style="list-style-type: none"> • Investigate funding for Youth (Boys and Girls Institute - BGI) • Liaise with council officers Deborah Hope, Ross Davies 	Hayley Wain	Short Term	
<i>Policing</i> <ul style="list-style-type: none"> • The police presence in Tawa is minimal (especially visible police presence), and of concern to some. • Perceived level of crime 	<ul style="list-style-type: none"> • Advocate to maintain a fulltime community constable. • Advocating to enhance neighbourhood watch. • Help establish the Tawa guardians 	Ngaire Best Robert Tredger	Ongoing Ongoing	

Business as usual activities

- Work closely with Civil Defence volunteers for a period to increase awareness and volunteer numbers
- Encourage initiatives that help increase the feeling of safety in the community.
- Encourage better use of existing Council facilities in Tawa by the community, i.e. the Board room and associated offices. The Board will look to base two or three community groups in the Board's premises.

Culture and Arts

Issues	Actions	Community Board Member Liaison	Timeframe	Comments
Priority Issues 2005/06				
<i>Community Art</i> <ul style="list-style-type: none"> • Do more to enhance community arts through sculpture 	<ul style="list-style-type: none"> • Complete the Kereru Family Sculpture. • Encourage more community art 	Robert Armstrong Tawa Community Board	Ongoing Ongoing	

City Economy

Business as usual activities

- Encourage business development in Tawa
- Encourage business contacts and liaison
- Seek out 3 or 4 local businesses who are prepared to 'sponsor' the Board's activities / publicity (Tony Parker)

Natural Environment

Issues	Actions	Community Board Member Liaison	Timeframe	Comments
Priority Issues 2005/06				
<i>Walking Tracks</i>	<ul style="list-style-type: none">• Support and encourage walking track improvements.	Tony Parker and Graeme Sutton	Ongoing	
<i>Parks and Reserves</i> <ul style="list-style-type: none">• Some of the parks and reserves could be better maintained	<ul style="list-style-type: none">• Advocate for parks to be better maintained.• Advocate for beautification of Tawa Streets.	Tony Parker and Graeme Sutton	Ongoing	

Business as usual activities

- Stream cleaning and access
- Amenity enhancement
- Create more walking tracks through the local bush

Resources and Waste

Business as usual activities

- Reduce the amount of litter
- Encourage residents to put out rubbish / recycling at correct times

Recreation and Leisure

Business as usual activities

- More playgrounds in those areas where there are none, especially Woodman Drive
- Increase seating in playgrounds for the elderly
- Market Tawa's pool facilities i.e. lane swimming, swimming club etc.

Transport

Issues	Actions	Community Board Member Liaison	Timeframe	Comments
Priority Issues 2005/06				
<i>Lighting of walkways and streets</i> <ul style="list-style-type: none"> • Some of the short cut routes are not well lit • Street lights are inadequate and need upgrading • More lights at acceptable times 	<ul style="list-style-type: none"> • Advocate for enhanced lighting in appropriate walkways. • Maps for walkways (TCB members can investigate how well lit they are) 	Robert Tredger	Ongoing	
		Robert Tredger	Ongoing	
<i>Footpaths</i> <ul style="list-style-type: none"> • Need more rest spots from Redwood village to the Town Centre • Need a walkway from Brasenose Park to end of Grayfriars Cres. 	<ul style="list-style-type: none"> • Advocate for a high quality footpath from retirement village to town centre. • Advocate for upgrade of footpath over the railway lines 	Robert Tredger	Ongoing	
		Tony Parker	Ongoing	

Business as usual activities

- Advocate for safer roads.
- Obtain feedback on the latest safer road measures and assess their effectiveness.
- Advocate to reduce traffic congestion.
- Proactive improvement to footpaths to make them safer to walk on.
- Promote the accessibility of public transport

Governance and Citizen Information

Issues	Actions	Community Board Member Liaison	Timeframe	Comments
Priority Issues 2005/06				
<i>Raising awareness of TCB</i> <ul style="list-style-type: none"> • Need to raise awareness of the Board's activities • Need to encourage more feedback from the community. 	<ul style="list-style-type: none"> • Work with Council to look at opportunities for raising awareness of TCB. • Invite councillors to Tawa Community Board meetings • Arrange for the Community Board Plan to be put on the Wellington City Council internet • Establish and maintain relationships with key stakeholder groups 	Ngaire Best and Robert Armstrong Ngaire Best Ngaire Best All Board Members	Ongoing Short term Short term Ongoing	
<i>Funding</i> <ul style="list-style-type: none"> • Annual DAP funding 	<ul style="list-style-type: none"> • Retention of operational discretionary funding. 	Tawa Community Board	Ongoing	

Business as usual activities

- Advocate for an alcohol by-law

GETTING INVOLVED

This section outlines how to provide feedback or engage in public participation with the Tawa Community Board.

Have your say

You can make a short presentation to the Board. You can do this either by phoning 801 3486, faxing 801 3020, email: public.participation@wcc.govt.nz or write to us. Please let us know by noon the working day before the meeting.

Alternatively, you can contact any of the Board members on the contact details at the front of this plan.

Write to us

You can write to us at:

Democratic Services
Wellington City Council
PO Box 2199
Wellington

Attend our meetings

You can view meeting dates on the Council website – www.wellington.govt.nz.

Feedback

We welcome any feedback you have on this plan. The plan will be reviewed every 12 months and we will incorporate feedback into future reviews and updates of the plan