



# **Tō Tātou Pōneke** Our Wellington

Your free guide to  
life in the capital

1 December 2023–  
31 March 2024

**Absolutely Positively**  
**Wellington City Council**  
Me Heke Ki Pōneke

# Rārangi upoko Contents

3	<b>I te mōhio koe ka taea e koe te...</b> <b>Did you know you can...</b> Our contact details and helpful hints	33	<b>50 years of creativity in the city</b> The Hannah Playhouse
4	<b>Wellington - by the numbers!</b> Fun facts and figures	34	<b>Kaupapa pūtea   Funding</b> Find out how we can help your community project
6	<b>Wā tākaro   Playtime</b> Popular play areas and summer play missions	35	<b>Ngā hui a te Kaunihera, ngā komiti me ngā poari ā-hapori</b> Council, committee and community board meetings
9	<b>Ngā pitopito kōrero   News</b> The latest news from around our city	36	<b>Te Koromatua me ngā Kaikaunihera   The Mayor and Councillors</b> The people who represent you in Wellington
12	<b>Ō tātou wāhi   Our places</b> Caring for our beaches and coastline		<b>Cover art:</b> Hannah Webster, <i>Thorndon Pool</i> , gouache on paper. @forestdrawn
14	<b>Tō tātou hapori</b> <b>Our community</b> Not all heroes wear capes - some wear gardening gloves		
16	<b>Ngā mahi whakangahau</b> <b>Put it on the calendar</b> Council supported events		
27	<b>Mahi huringa</b> <b>āhuarangi pae matua</b> <b>Climate action capital</b> Taking action together		
29	<b>Explore Wellington in a new way this summer</b> Getting around by bike, bus or pavement		
30	<b>Mahi toi   Capital arts</b> New exhibitions and public art projects		

**For more information about anything in this magazine, visit [wellington.govt.nz](http://wellington.govt.nz)**  
No internet at home? You can phone our Contact Centre any time on **04 499 4444** or use a free internet computer at one of our libraries.

We're proud to use the indigenous language of Aotearoa in our publications. If you come across a word you don't know, there's an easy way to learn what it means - visit [maoridictionary.co.nz](http://maoridictionary.co.nz)  
Learn about local reo Māori dialects with our Mahau app - visit [wellington.govt.nz/mahau](http://wellington.govt.nz/mahau)

**Disclaimer:** We make this magazine to encourage you to get involved in local events, to demonstrate the great work happening in Wellington, and to show you some of the many reasons there are to be proud of your city. Wellington City Council has, to the best of its knowledge, sourced accurate information. We will not be held responsible for any errors, changes in pricing, or misinformation.

**Production:** Wellington City Council Communications and Engagement Team

**Email:** [ourwellington@wcc.govt.nz](mailto:ourwellington@wcc.govt.nz)



This publication uses vegetable based inks and environmentally responsible paper produced from Forest Stewardship Council® (FSC®) certified, mixed source pulp from responsible sources.



Paper produced using Elemental Chlorine Free (ECF) and manufactured under the strict ISO14001 Environmental Management System.

# Kia ora koutou

Kua tae mai te Raumati, ā, ka nui ngā mea hei pārekareka i tō tātou tāone nui i ngā marama mahana nei.

E mōhio ana ngā tāngata 212,849 e mahi ana, e noho ana, e ngahau ana i Te Whanganui-a-Tara.

E waimarie ana tātou i tō tātou takutai ātaahua, ō tātou ngahere, ngā wāhi kai me te nui o ngā wāhi toi me te ahurea toritori.

Engari ehara ko te haukāinga anake kei te pārekareka ki ngā āhuatanga o Pōneke.

Tata ki te 750,000 ngā tūruhi e haere mai ana ki Te Whanganui-a-Tara i ia tau kia whai wāhi mai ki tō tātou tāone nui.

Ko ngā wāhi ā-waho hoki tētahi āhuatanga nui e tino rawe ai tō tātou tāone nui hei wāhi nohopai. Neke atu i te 1.3 miriona ngā tāngata i tae atu ki te Māra Huaota ki Paekākā me te Ngahere o Ōtari-Wilton i tērā tau. Ko tōna rite e ono ngā haerenga atu a ia tangata o Te Whanganui-a-Tara i te tau!

Me te aha, kei te haruru anō a Zealandia, kei te takiwā o te 136,000 ngā manuhiri e haere atu ana i te tau.

Ko te tūmanako ka pai ki a koe tēnei putanga o Tō Tātou Pōneke, e aro ana ki te whakanui i a Te Whanganui-a-Tara - e ai ki ngā tatauanga.

Tāpiri ki tētahi māramataka kiki ana i te kaupapa, he nui ngā mea hei hōpara i tēnei whaitua o tō tātou ao i tēnei raumati. Nō reira hoake ki waho kia pārekareka ai ki ōna āhuatanga!

Tory Whanau  
**Koromatua**

Laurie Foon  
**Koromatua Tuarua**

Summer is here, and there is much to enjoy about our city in the warmer months.

The 212,849 people who live, work, and play in Wellington know this.

We're spoilt with our wild coastline, our thriving native green spaces, our buzzing hospitality and retail scenes, and our vibrant arts and culture offerings.

But the locals aren't the only ones who appreciate what Pōneke has to offer.

Around 750,000 tourists come to Wellington to experience our wonderful city each year.

Our outdoor spaces are a huge part of what makes our city so liveable. The Botanic Garden ki Paekākā and Ōtari-Wilton's Bush had over 1.3 million visits last year. That's equivalent to every Wellingtonian visiting six times!

Zealandia is also going gangbusters with around 136,000 visitors annually.

We hope you enjoy this issue of Tō Tātou Pōneke, which is dedicated to celebrating Wellington - by the numbers.

Along with an action-packed event calendar, there is much to explore in our fantastic corner of the world this summer. So get outside and enjoy what's on offer!

Tory Whanau  
**Mayor**

Laurie Foon  
**Deputy Mayor**





# SEE SUPERPOWERS MADE REAL

BOOK AN INCREDIBLE EXPERIENCE TODAY

WELLINGTON

**Zoo**

For more info or to book, please visit  
[wellingtonzoo.com/close-encounters](http://wellingtonzoo.com/close-encounters)

**CLOSE ENCOUNTERS**  
**EXPERIENCE INCREDIBLE**



# I te mōhio koe ka taea e koe te...

## Did you know you can...



### Contact us any time

Phone: 04 499 4444

Email: [info@wcc.govt.nz](mailto:info@wcc.govt.nz)

### Stay up to date on social media

-  [facebook.com/wellingtoncitycouncil](https://facebook.com/wellingtoncitycouncil)
-  [@WgtnCC](https://twitter.com/WgtnCC)
-  [wgtncc](https://www.instagram.com/wgtncc)
-  [wgtncc](https://www.tiktok.com/wgtncc)
-  [wellingtoncitycouncil](https://www.linkedin.com/company/wellingtoncitycouncil)

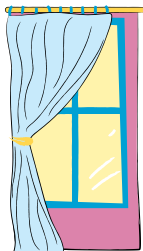
### Report stream pollution events

Freshwater pollution threatens our native species and habitats and has a high risk to human health and cultural wellbeing. If you see evidence of a pollution event, report it to Greater Wellington Regional Council's Pollution Hotline on 0800 496 734. [gw.govt.nz/environment/pollution-management](https://www.gw.govt.nz/environment/pollution-management)

### Donate your pre-loved curtains to help local families in need

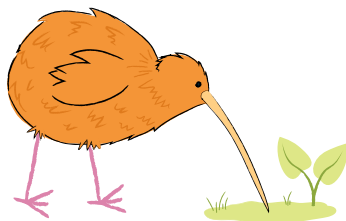
Sustainability Trust's Curtain Bank upcycles pre-loved curtains and provides them to low-income families and individuals in the Wellington region.

[sustaintrust.org.nz/donate-curtain-bank](https://sustaintrust.org.nz/donate-curtain-bank)



### Recycle your Christmas tree at the Tip Shop

Once the lights and decorations have been removed, drop off your (real-life) Christmas tree to the Southern Landfill for free! The trees will be recycled and used as part of Capital Compost - where we take our city's food waste and green waste and turn it into compost. The service will be available from 26 December until 14 January.

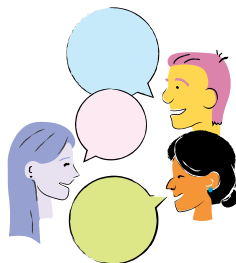


### Help look after our kiwi population

Kiwi could be living in your backyard! Find out how to look after kiwi in Wellington and how to be neighbourly with our national icon and taonga. [wellington.govt.nz/kiwi](https://www.wellington.govt.nz/kiwi)

### Have your say

Sign up to our Capital Views research panel and provide feedback on a wide range of surveys that help us better understand our community. [wcc.nz/capital-views](https://wcc.nz/capital-views)



# Wellington - by the numbers!

There is so much to love about our wonderful city. Let's celebrate all Pōneke has to offer by looking at some facts and figures.

2,090

sunshine hours in 2022



172 million L

the average amount of water used by the greater Wellington region per day



212,849

Wellington city population



110,000

native plants planted with the community in past year

798

places to eat

10%

reduction in city emissions in past three years



86

public toilets



28,000<sub>kg</sub>

of reusable items saved from landfill  
by the Tip Shop team per year

4,317<sub>ha</sub>

of open green space

450,000

people attended Council-run or  
Council-supported events last year

163<sub>km/h</sub>

top recent wind gust, recorded at Mt Kaukau



55,785

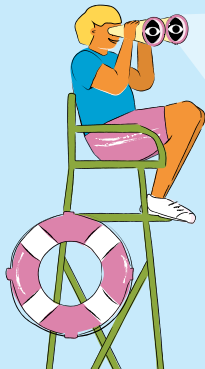
queries received by our  
social media team in 2022

170,862

calls handled by our  
Contact Centre  
last financial year

1.3<sub>million</sub>

visitors to Botanic Garden  
ki Paekākā and Ōtari-  
Wilton's Bush annually



44

rescues performed by  
our lifeguards in 2022

1.6<sub>million</sub>

visitors to our libraries  
each year



# Wā tākaro Playtime



## Challenge accepted

This year, three Thorndon School students set out on a mission to play at all 107 play areas across the city.

Over six months, they visited every playground and ranked each one, keeping a keen eye out for features like monkey bars, firefighter poles and flying foxes.

### Here are their top-rated playgrounds in the city:

#### Churchill Park

Situated by the beach in Seatoun, this playground has an epic pirate ship and easy access to the beach.

#### Karori Play Area

This community playground has been refreshed and rocks some cool equipment, like a nest swing.

#### Pirie Street Play Area

Close to the Mount Victoria tunnel, this play area has the perfect balance of green area to play in and a playground for children.

#### Warwick Street

This playground in Wilton has just had a renewal, and has heaps of exciting new additions, including an inclusive swing seat.

#### Grasslees Reserve

There's plenty to do and see in the area, with a playground, gardens, a dog exercise area, electric barbecues and Tawa Pool. There's a fun mouse wheel and spinning seat!

#### Jim Belich Play Area

This Berhampore playground focuses on accessibility which allows for children to move easily around the area. There's a great flying fox and a skate park.

#### Carrara Park

This spot in Newtown has it all: flying foxes, a fenced-off toddler area, a double-bay swing, a ferret climbing structure and monkey bars.

107  
play areas

Pārekareka is a movement to promote and advocate for children's rights to play in Pōneke. Find out more about Pārekareka at [wellington.govt.nz/play](http://wellington.govt.nz/play)

# Make your own play mission

Check out other ways you can play this summer.

**Pārekareka**

play your way every day

## Mission: Imagine

Play can be whatever you want it to be. Conventional rules need not apply! You could:

Visit your best friend in...

Pretend to have wings and fly to...

Impersonate your favourite...

Put on a costume and act like a...

Grab some supplies and create a...

## Mission: Harbour

If you're a fan of water, Pōneke has some great spots. You could:

- ☐ Try snorkelling with Mountains to Sea.
- ☐ Kayak in a bay.
- ☐ Manu (bomb) off a wharf or pier.
- ☐ Surf in Lyall Bay.
- ☐ Visit the Marine Education Centre in Island Bay and learn about local wildlife.

## Mission: Backyard

Can't go far? Any space can be a play space! You could:

- ☐ Find the tallest and smallest place you can play.
- ☐ Find the brightest place you can play.
- ☐ Find the grassiest place you can play.
- ☐ Find the quietest or loudest place you can play.

## Mission: Coast

Pōneke has a beautiful, rugged coastline peppered with sandy and rocky beaches. Nature play galore! You could:

- ☐ Learn and practise te reo Māori kupu (words) for the animals and plants you see.
- ☐ Build the tallest/shortest/longest sandcastle.
- ☐ Make a hut big enough for your whānau to sit in.
- ☐ Explore rock pools and search for creatures.

## Mission: Bush

Take a break from the sun and wind and explore the city's beautiful bush. Head out and ask:

- How many trails can you walk?
- How many plants can you identify?
- How many birds can you hear?
- How many insects can you find?

Where are the best scroggin-stopping spots?



**City  
Gallery  
Wellington**  
Te Whare Toi

# Open

**MON TO FRI**  
**4pm – 7.30pm**

**SAT AND SUN**  
**10am – 5pm**



Keep art alive in the  
heart of Pōneke.  
We are a charity.  
Please scan to donate.

City Gallery Wellington Te Whare Toi  
is changing its week-day hours to  
continue to bring you art in the heart  
of Wellington during construction  
work in Te Ngākau Civic Square.

PART OF



PRINCIPAL FUNDER

Absolutely Positively  
Wellington City Council  
Me Heke Ki Pōneke

STRATEGIC PARTNER



## **Pay by Plate is coming in January**

We're updating the city's ageing parking meter system with new Pay by Plate meters. Pay by Plate is a paperless system that uses your vehicle licence plate number, rather than a numbered car park, to record your parking time and payment. Parking fees will stay the same.

Pay by Plate is easy to use and works like the systems already in Lower Hutt, Porirua, and Auckland. There'll be a mixture of card-only meters and card and coin meters. They'll be placed within the line of sight of any on-street car park.

Fans of the PayMyPark app will still be able to use the app to pay for parking. You'll need to enter the parking area number, visible on the side of the nearest meter, rather than a parking bay number.

The new meter system is part of our city planning and transformation work.



We'll be able to manage parking fairly and efficiently, and the system can adapt easily to future changes to our city streets.

Installation of the new meters is underway. They'll be switched on and 'live' from early January 2024.

For more on Pay by Plate, see [wellington.govt.nz/pay-by-plate](https://wellington.govt.nz/pay-by-plate)

## **Hidden Gardens**

Discover the five Hidden Gardens across Pōneke, created by our apprentice gardeners. The Hidden Gardens project showcases the works of apprentice gardeners who study for three years with experienced mentors and managers, learning about what it takes to look after the beautiful gardens and parks in Pōneke.

The five gardens will be in place for you to find until 12 December. Each garden has a theme, chosen and crafted by each apprentice. Some of the themes this year include fungi, ferns, toi Māori and different soil types - one even has a cauldron.

Take some time to explore these gardens and be sure to vote for your favourite. For information on where to find each garden, visit [wellington.govt.nz/hidden-gardens](https://wellington.govt.nz/hidden-gardens)

# WILDLIFE THROUGH A NEW LENS



Photography tours for keen beginners, ambitious amateurs, and accomplished photographers – anyone seeking to capture incredible once-in-a-lifetime moments in nature.

**ZEALANDIA**  
TE MĀRA A TĀNE

3 hours with expert wildlife photographers  
**LIMITED SPACES - BOOK NOW**

**[VISITZEALANDIA.COM/PHOTO](https://www.visitzealandia.com/photo)**

*Photo credit: Hobby photographer Steve Bryant. Photo taken on Zealandia photography tour.*

# Ngā pitopito kōrero News

## Making good progress at Te Matapihi ki te Ao Nui (Central Library)

All 49 piles have now been installed and the base isolators are next in line to help ensure this iconic library remains strong and resilient in the future. When Te Matapihi reopens in 2026 you will find:

- the Central Library services
- the City Archives
- the Council customer services

- on site Capital E services for young people to grow their creativity
- a large ground floor cafe
- active spaces for meeting and making connections
- quiet spaces to study and read.

The target is for the building to have a 5-Green-Star rating, meaning it has a high standard in terms of environmental design. [wellington.govt.nz/te-matapihi](https://www.wellington.govt.nz/te-matapihi)

## Christmas shopping sorted? Absolutely.

For your holiday season shopping, enjoy all that the creative capital has to offer. From independent, local arts and crafts, through to boutiques with local and international designers, to quirky book and gift stores.

Wander Lambton Quay's Golden Mile to the boutiques in the Old Bank Arcade, along Willis Street to enjoy NZ and international designers, to the vintage

stores on Cuba Street, and independent design and fashion stores of Ghuznee Street and beyond. Wellington has something for everyone.

### Tips for travelling into Wellington:

- Using Snapper, Metlink buses and trains offer free travel for children 12 and under.
- Why not try out the new cycle lanes into the city?
- If you do need to take a car, why not shop with friends and car-pool? Wellington has over 2,200 metered car parks in the central city. On the weekend you can park your car for \$3 per hour, for up to three hours in most inner-city parks.
- Clifton Street and Tory Street car parks are available with a weekend and public holiday maximum of \$8 for all-day parking. Both are a three-minute walk to nearby shopping areas.



# Caring for our beaches and coast this summer

Te Whanganui-a-Tara is an amazing harbour. From the sea to the dunes, it's an ecosystem that supports wildlife and their habitats despite ever-changing conditions and shifting tides.

While making the most of the city's beaches and harbour this summer, think about how you can care for these spaces.

### Rock pools

The rugged coastline of Wellington is graced with rock pools. These miniature marine worlds are teeming with life, from colourful anemones and resilient barnacles to elusive crabs. What's truly remarkable is their adaptability - these organisms thrive despite pounding waves and shifting tides. One cool spot to enjoy these wonders is Scorching Bay.

### Seaweed forests

These underwater ecosystems, once thriving, are essential for marine biodiversity. They provide refuge and sustenance to countless species, benefiting fisheries and maintaining a healthy marine food chain. Seaweed forests also serve as a natural defence against coastal erosion, bolstering the city's resilience to rising sea levels and storms. They absorb carbon too, so helps with our response to climate change. Check out the amazing diversity of seaweeds if you go snorkelling this summer at the Island Bay Snorkel Trail.

### Dunes

Another coastal taonga (treasure) are the few remaining sand dunes. These dynamic and critically endangered habitats are shaped by the relentless forces of wind and tides. They are vital for coastal protection, providing a buffer against erosion and storm surges. Native dune plants like pingao and spinifex are very resilient and stabilise the dunes and provide habitat for unique wildlife. Check out some of the sand dune restoration efforts at Island Bay.





98.9km  
of coastline

**Ten tips to keep te taiao (our environment) thriving while enjoying the coast:**

- 1 Keep the beach plastic-and rubbish-free by cleaning up after yourself and picking up any litter you see.
- 2 To help us in our Predator-Free efforts, don't leave food unattended or behind - rats love nothing more than a free meal.
- 3 Keep to paths to avoid trampling or riding over dunes and vegetation, and to keep safe the plants and animals that call these important coastal ecosystems home.
- 4 Use reef-friendly sunscreen; choose sunscreen that does not contain harmful chemicals like oxybenzone and octinoxate, which can harm corals and other marine life.
- 5 Beachcombing is fun - you can search for seashells or even the vibrant pāua shells. But remember shells are an important part of the habitat, so exercise restraint when it comes to collecting.
- 6 To keep birds safe, walk your dog on a lead unless you are in a dog off-leash area - and pick up after it.
- 7 If you fish, follow the rules and release undersized or non-target species. Make sure you don't leave any equipment behind.
- 8 If you're boating, follow speed limits and slow down to avoid disturbing marine life, especially in sensitive areas.
- 9 Animals need their personal space - keep a respectful distance from any seals or nesting birds.
- 10 If you see any injured manu (birds) or marine life, or poaching events, report it to the DOC Hotline at **0800 362 468**. You can also contact the Council at **04 499 4444**.



160+  
community &  
environment  
groups



# Not all heroes wear capes – some wear gardening gloves

Local legend Campbell Maclean has been hard at work for four decades, planting over 2,500 native plants in the Town Belt section behind his home in Mount Cook – all on his own initiative.

His story began in the mid-1980s when he noticed periodic detention gangs clearing the slopes of the long grass in the Town Belt above his home, to plant native trees and shrubs. Often the plants were tossed aside, leaving Campbell to rescue the plants and replant them when they all left.

After some years, the gangs eventually moved on, but Campbell had become invested in the area.

59,000  
volunteer hours spent  
across our parks and open  
spaces in 2022

He was determined to create a sanctuary and single-handedly cleared all noxious weeds from the area bordering the Town Belt, getting rid of weeds like Old Man's Beard, gorse, and Wandering Willy.

He began growing seedlings, purchasing plants, and using cuttings to bring life to the area behind his home - fully funding his own work and volunteering his own time.

In 2012, a chance encounter caused Campbell's wife to stumble across the Berhampore Nursery, where she met Wellington City Council Biodiversity Specialist Anita Benbrook. They began chatting about the space, and Anita and a park ranger visited the space to provide advice on the best plants to include.

When they arrived, the two were amazed by the work and offered to provide plants from the nursery which Campbell believes made his work possible.

"Everything changed from that meeting. We started off getting around 90 plants a year, and then have built up to 500 a year. Without that support, we wouldn't have been able to plant as much as we have," says Campbell.

Over the years, people on his cul-de-sac became interested in the area after seeing him out day after day, and he was often joined by neighbours, his own family, and volunteers from community groups in the Mount Cook area.

While people often came and went, Campbell says he was a "one-man band" dedicated to the cause. He often spent hours after work and on the weekends working, until he retired and started working there every single day.

What was once an unruly weed-ridden section of the Town Belt is now a haven for native plants to thrive, with Campbell planting 20 kauri, 10 rimu and 10 matai. Birds are flourishing, with an increase of kākā, kererū and tūi in the area.

While he's estimated planting around 2,500 plants, it's likely to be more and he doesn't plan on slowing down anytime soon.

"This space is so special because it's in the heart of the city. I will be here every day to keep it going."

90,000  
native plants grown annually  
by Berhampore Nursery

# Ngā mahi whakangahau

## Put it on the calendar

Check out some of the exciting events the Council is supporting over the summer months. For more info, visit [wellington.govt.nz/events](http://wellington.govt.nz/events)

### Christmas in the Quarters

11am-5pm, Saturdays  
25 Nov-16 Dec



Celebrate Christmas with four themes, at four events, one in each quarter of the city. Kids, make Christmas crafts on Sat 25 Nov in Midland Park. Sing Christmas carols, and bop along to hip hop and other things musical on Sat 2 Dec in Glover Park. Enjoy circus acts under the sails at Queens Wharf on Sat 9 Dec, and be at Waitangi Park on Sat 16 Dec for Santa's arrival, to meet Santa in his grotto, and for fun Christmas activities.

[wellington.govt.nz/christmas](http://wellington.govt.nz/christmas)

### On a Good Day

Thu 30 Nov-Sat 2 Dec | Anderson Park

Wellington's newest music series, featuring a huge line up of local and international acts. [wellingtonnz.com/events](http://wellingtonnz.com/events)

### Botanical insights

Fri 1 Dec-Wed 31 Jan | Treehouse, Botanic Garden ki Paekākā | Free

Explore the evolution of plant disease research following the Irish Potato Famine in December's exhibit, and discover the remarkable influence of women in botany showcased in January's exhibition. [wellingtongardens.nz](http://wellingtongardens.nz)

### Music at the Begonia

11am-12noon, Sun 3 Dec & 2 Mar | Begonia House, Botanic Garden ki Paekākā | Koha

Join the Friends of Wellington Botanic Garden for music in the Begonia House Foyer. [wellingtongardens.nz](http://wellingtongardens.nz)

### Wellington Firebirds vs Canterbury

10.30am, Thu 7 Dec | Cello Basin Reserve

Ford Trophy. Free entry. [basinreserve.nz](http://basinreserve.nz)

### Te Ohonga: The Awakening

Fri 8 Dec-Mon 1 Apr | Wellington Museum

Contemporary Māori artists from Te Upoko o te Ika awhi taonga in the Wellington Museum collection. A temporary exhibition. [teohonga.nz](http://teohonga.nz)

### Wellington Phoenix A-League men vs Newcastle JETs

7.30pm, Sat 9 Dec | Sky Stadium

[wellingtonphoenix.com](http://wellingtonphoenix.com)

### Wellington Blaze vs Auckland Hearts

10.30am, Sat 9 & Sun 10 Dec

Cello Basin Reserve

Hallyburton Johnstone Shield. Free entry. [basinreserve.nz](http://basinreserve.nz)

### Marvel: Earth's Mightiest Exhibition

Thu 14 Dec-Sun 28 Apr | Tākina

Explore the Marvel Universe and discover the stories behind your favourite characters at this world-premiere exhibition. [wellingtonnz.com/events](http://wellingtonnz.com/events)



Summer Solstice 2022. Credit: Tom Noble

## Summer Solstice

8.30pm, Fri 22 Dec | Island Bay Beach

Let the festivities begin! Celebrate the summer solstice with live music, fire, and a summer solstice ceremony. [loemis.nz](http://loemis.nz)

## Summer Sampler

Every weekend during Jan-Feb  
Wellington Waterfront

Join us as some of the city's finest performers fill the waterfront with vibrant delights.

[wellington.govt.nz/summer-sampler](http://wellington.govt.nz/summer-sampler)

## Dream11 Super Smash doubleheader

Thu 21 Dec | Cello Basin Reserve

Catch the Blaze vs Otago Sparks at 12.30pm, and Firebirds vs Otago Volts at 4pm. [blazefirebirds.co.nz](http://blazefirebirds.co.nz)

## Phoenix Doubler Header

Sat 23 Dec | Sky Stadium

See Wellington Phoenix A-League women vs Newcastle Jets at 2.45pm, and Wellington Phoenix A-League men vs Western Sydney Wanderers at 5.30pm. [wellingtonphoenix.com](http://wellingtonphoenix.com)

## Summer in the Sanctuary

Dec-Jan | Zealandia Te Māra a Tāne

Immerse yourself in nature this summer and connect with the unique wildlife of Aotearoa. [visitzealandia.com/events](http://visitzealandia.com/events)

## Dream11 Super Smash doubleheader

Sun 24 Dec | Cello Basin Reserve

Catch the Blaze vs Auckland Hearts at 10am, and Firebirds vs Auckland Aces at 1.30pm. [blazefirebirds.co.nz](http://blazefirebirds.co.nz)

## New Year's Eve

8pm-12 midnight, Sun 31 Dec  
Whairepo Lagoon



A free, fun evening of great music to bring in the New Year, in one of Wellington's iconic locations.

Kids, enjoy an early countdown and a blast of fireworks at 9.30pm.

[wellington.govt.nz/newyear](http://wellington.govt.nz/newyear)

## Māorioko with The Māori Wardens

Dec | Courtenay Place

Support the Māori Wardens throughout December with classic waiata and good old party songs for all to join in! [urbandreambrokerage.org.nz/maorioko](http://urbandreambrokerage.org.nz/maorioko)

## Playscape - an urban swing

Sat 16 Dec-Sun 14 Jan | 115 Taranaki St

Soft Serve Social presents Playscape, a social swing to provide a safe and activated space to sit safely in our city. [urbandreambrokerage.org.nz/soft-serve-social](http://urbandreambrokerage.org.nz/soft-serve-social)



## **NZ Cycle Classic - UCI 2.2**

Sun 14 Jan | Lambton Quay

World class road cycling returns to the Wellington CBD. Club riders, beginners' fun races and kids' races from 10.30am, and pro race at 1pm. [cycletournz.com](http://cycletournz.com)

.....

## **Dream11 Super Smash doubleheader**

Sat 13 Jan | Cello Basin Reserve

See the Blaze vs Central Hinds at 12.30pm, and Firebirds vs Central Stags at 4pm. [blazefirebirds.co.nz](http://blazefirebirds.co.nz)

## **Dream11 Super Smash doubleheader**

Mon 15 Jan | Cello Basin Reserve

Catch the Blaze vs Northern Brave (W) at 12.30pm, and Firebirds vs Northern Brave (M) at 4pm. [blazefirebirds.co.nz](http://blazefirebirds.co.nz)

.....

## **Wellington Phoenix A-League men vs Melbourne Victory**

7pm, Fri 19 Jan | Sky Stadium

[wellingtonphoenix.com](http://wellingtonphoenix.com)

## **Gardens Magic**

Tue 9-Sun 28 Jan

Botanic Garden ki Paekākā | Free

Our iconic summer event returns with three weeks of free music, a Light Display, Kids Garden Trail, and Kids Explorer Days, all set amongst the natural beauty of the Botanic Garden ki Paekākā.

[wellington.govt.nz/gardens-magic](http://wellington.govt.nz/gardens-magic)

.....

## **Gardens Magic Concert Series**

7pm-9.15pm, Tuesdays-Sundays

The free Gardens Magic Concerts Series shows start earlier this year, with a warm-up solo act from 7pm before the main act at 8pm. Come early to grab a good picnic spot!

.....

## **Gardens Magic Light Display**

9pm-11pm, daily

As the sun sets see the gardens transform with a magical light display by MJF Lighting. Self-explore the lights in the trees after enjoying your Gardens Magic concert.

## **Gardens Magic Kids Garden Trail & Explorer Days**

9am-5pm, daily

Enjoy a free, fun summer's day out with the kids exploring the Kids Garden Trail. Join Clio the artist as they discover the flora and fauna of the gardens and explore the ecosystem of a meadow. Pick up an activity sheet near the Soundshell, at the Tree House, or at the Cable Car ticket office. Visit [wellington.govt.nz/gardens-magic](http://wellington.govt.nz/gardens-magic) for details.



**Ramat Koro Kur: Contemporary Art from the Ainu people of Japan**  
from Wed 24–Mon 29 Jan | Te Auaha Gallery  
[sharedlines.org.nz](http://sharedlines.org.nz)

.....

### **Ōtari Raranga Weavers**

Dec–March | Ōtari–Wilton’s Bush

Learn about traditional Māori weaving and healing practices using native plants with weekend and evening classes.

[otariraranga.wordpress.com](http://otariraranga.wordpress.com)

.....

### **Dream11 Super Smash doubleheader**

Mon 22 Jan | Cello Basin Reserve

See the Blaze vs Canterbury Magicians at 12.30pm, and Firebirds vs Canterbury Kings at 4pm. [blazefirebirds.co.nz](http://blazefirebirds.co.nz)

.....

### **Z Manu World Champs**

– **Regional Qualifier**

Fri 26–Sun 28 Jan | Wellington Waterfront Jump Platform

Have you got the goods to become the first Manu World Champion? Learn more and secure your qualification spot at [manuworldchamps.com](http://manuworldchamps.com)

.....

### **Artist in Residence**

Thu 1 Feb–Sun 31 Mar | Treehouse, Botanic Garden ki Paekākā | Free

Sandra Morris will create beautiful botanical works on Thursdays, Fridays and Saturdays during February and March. Her artwork will be available to view and purchase. [wellingtongardens.nz](http://wellingtongardens.nz)



Foo Fighters. Credit: Scarlet Page

### **Foo Fighters**

Sat 27 Jan | Sky Stadium

Foo Fighters will return to New Zealand this summer, bringing their unrivalled live show to Sky Stadium. [wellingtonnz.com/events](http://wellingtonnz.com/events)

.....

### **Ford Trophy – Wellington Firebirds**

Cello Basin Reserve | Free entry

Vs Central Stags (10.30am, Fri 2 Feb), vs Northern Districts Men (10.30am, Tue 6 Feb), vs Otago Volts (10.30am, Sat 10 Feb), vs Auckland Aces (10.30am, Wed 14 Feb). [basinreserve.nz](http://basinreserve.nz)

.....

### **Wellington Blaze vs Central Hinds**

10.30am, Sat 3 & Sun 4 Feb

Cello Basin Reserve

Hallyburton Johnstone Shield. Free entry. [basinreserve.nz](http://basinreserve.nz)

.....

### **Wellington Phoenix A-League men vs Western United FC**

5.30pm, Sat 10 Feb | Sky Stadium

[wellingtonphoenix.com](http://wellingtonphoenix.com)



# TE OHONGA

T H E   A W A K E N I N G

Wellington  
Museum

Contemporary Māori artists from Te Upoko o te Ika  
awhi taonga in the Wellington Museum collection.  
Exhibition opens 8 December | [teohonga.nz](http://teohonga.nz)

Part of Experience  
Wellington. Principal  
Funder Wellington  
City Council.

## **Te Rā o Waitangi | Waitangi Day**

12noon-6pm, Tue 6 Feb

Waitangi Park | Free

Celebrate Aotearoa with friends, whānau, and our multi-cultural community to acknowledge our treaty obligations and partnerships. Wellington Māori signed Te Tiriti o Waitangi on 29 April aboard treaty translator Henry Williams' schooner in Port Nicholson. Enjoy a great line-up of multicultural performances, stalls, and kai, on this historical day.  
**[wellington.govt.nz/waitangi](http://wellington.govt.nz/waitangi)**



## **Wellington Pasifika Festival**

12noon-6pm, Sat 10 Feb

Waitangi Park | Free

Experience the sights, sounds, and flavours of the Pacific with a day of traditional and contemporary music, performances, delicious food, arts, crafts, and activities.  
**[wellington.govt.nz/pasifika](http://wellington.govt.nz/pasifika)**

## **Summer Season:**

### **Opening Weekend Talks**

12pm-4pm, Sat 3 Feb | City Gallery

Celebrate the opening weekend of our summer season, featuring solo exhibitions by artists Julia Morison, Michael Mahne Lamb, Ahsin Ahsin and Julian Hooper, and events that offer a deeper understanding of the exhibitions. Donations appreciated.  
**[citygallery.org.nz](http://citygallery.org.nz)**

### **Island Bay Festival**

Sun 11-Sat 17 Feb | Island Bay

Have a summer bay-cation and discover the talent and diversity of the South Coast. Enjoy Day in The Bay on Sun 11 Feb and activities during the week through to Closing Weekend on Sat 17 Feb.  
**[islandbayfestival.org.nz](http://islandbayfestival.org.nz)**

### **Heavenly Bodies:**

#### **Valentine's Under the Dome**

6pm-10pm, Wed 14 Feb | Space Place

Celebrate star-crossed lovers in style this Valentine's Day. Enjoy a live planetarium show detailing love in the stars, a drop-in drawing session and a drink upon arrival. Cash bar, and pre-ordered couple's platters available. R18. Book at **[spaceplace.nz](http://spaceplace.nz)**

### **Ōtari seminar series**

7.30pm-8.30pm, Tuesdays in March | Tāne Whakapiripiri, Ōtari-Wilton's Bush | Koha

Join the Ōtari-Wilton's Bush Trust for their annual seminar series. Get inspired by the varied world of botany and conservation.  
**[wellingtongardens.nz](http://wellingtongardens.nz)**

## New Zealand Fringe Festival

Fri 16 Feb–Sat 9 Mar | Various locations

Over 200 arts events from local and international artists. The Birthplace of Brilliance: discover the next big thing.

**fringe.co.nz**

## U R HERE BACK

4pm–6pm, Fri 16 Feb

3pm–6pm, Sat 17 & Sun 18 Feb

Martin Luckie Park, Berhampore

It's back! Barbarian's popular, poetic and playful outdoor event - are you ready to play? **barbarian.co.nz/work/urhere**

## Contemporary Responses to Don Driver

2pm–3pm, Sat 17 Feb | City Gallery

Join us on the closing weekend of the exhibition *Eerie Pageantry* to hear responses to the legacy of Don Driver from our panel of contemporary artists and writers.

Donations appreciated. **citygallery.org.nz**

## Wellington Blaze vs Canterbury Magicians

10.30am, Sat 17 & Sun 18 Feb

Cello Basin Reserve

Hallyburton Johnstone Shield.

Free entry. **basinreserve.nz**



## Celebrating Local Kai

**Seeds to Feeds** harnesses the power of local kai (food) experiences to connect people to each other, themselves, and their place. Through collective, supported action, communities become more resilient thanks to the nourishing practices of learning about, preparing and sharing local kai (food)

hello@seedstofeeds.nz  
www.seedstofeeds.nz  
facebook.com/seedstofeedsnz  
@seeds.to.feeds  
@SeedsToFeedsNZ





**Hatupatu | Kurungaituku  
A Forbidden Love**

Tue 20–Sat 24 Feb | Tāwhiri Warehouse

Contemporary Māori theatre combining breathtaking aerials, kapa haka, and an immersive multi-media set. [festival.nz](https://festival.nz)

**The Performance Arcade 2024**

10am–11pm daily, Wed 21–Sun 25 Feb  
Wellington Waterfront | Free

The Performance Arcade emerges for its 14th season. Operating through time and across waterfront spaces, watch performing artists reimagine the future, past, and present in a vibrant array of new works. [theperformancearcade.com](https://theperformancearcade.com)

**BLACKCAPS vs Australia T20**

7.10pm, Wed 21 Feb | Sky Stadium

BLACKCAPS play their first T20 international match against rivals Australia at Sky Stadium under lights. [wellingtonnz.com/events](https://wellingtonnz.com/events)

**Aotearoa New Zealand  
Festival of the Arts**

Fri 23 Feb–Sun 17 Mar | Various venues

The Festival is back for 2024 with a world-class selection of free and ticketed events including music, theatre, dance, visual arts, literature and more. [wellingtonnz.com/events](https://wellingtonnz.com/events)

**Wellington Museum Low Sensory Hour**

4pm–5pm, first Thu of every month  
Wellington Museum

Featuring low light and sound throughout the museum. [wellingtonmuseum.nz](https://wellingtonmuseum.nz)

**Vantage National Hockey  
Masters Tournament**

Sun 25 Feb–Sat 2 Mar

National Hockey Stadium, Newtown

More than 1,500 players ranging from 35 to 70+ years will participate in the nation’s largest hockey tournament in 2024. [hockeynz.co.nz](https://hockeynz.co.nz)

**Astronomy on Tap**

8pm–10pm, Tue 27 Feb & 26 Mar  
Space Place

Sit back and relax in our full-dome digital planetarium as we explore the night sky. [spaceplace.nz](https://spaceplace.nz)

**BLACKCAPS v Australia test match**

Thu 29 Feb–Mon 4 Mar | Cello Basin Reserve

The BLACKCAPS will host world test champions Australia this summer for the first time since 2016. Playing their first test of the series at Cello Basin Reserve. [wellingtonnz.com/events](https://wellingtonnz.com/events)

**New Zealand Symphony Orchestra**

See the NZSO perform in Wellington during February and March. [nzso.co.nz](https://nzso.co.nz)

**Wellington Pride Festival**

Fri 1–Sun 17 Mar | Various locations

This unique festival showcases our diverse and vibrant communities. [wellingtonpridefestival.com](https://wellingtonpridefestival.com)



Julia Deans on stage at Newtown Festival 2023.  
Credit: Vanessa Rushton Photography

## Newtown Festival

9.30am onwards, Sun 3 Mar

Aotearoa's greatest free music festival and street fair, with 16 stages, 1000+ performers, and 420+ stalls.

[newtownfestival.org.nz](http://newtownfestival.org.nz)

## Wellington Phoenix A-League men vs Adelaide United FC

5pm, Sun 3 Mar | Sky Stadium

[wellingtonphoenix.com](http://wellingtonphoenix.com)

## Sci-Fi Sundays: Time Travel

6pm, Sun 3, 10 & 17 Mar | Space Place

Ever-popular Sci-Fi Sundays kick off with three time-travel films screened on Space Place's planetarium dome. Tickets are \$25 and include a movie, popcorn, and a star talk. Book at [spaceplace.nz](http://spaceplace.nz)

## PARK(ing) Day 2024

9am-5pm, Mon 4 Mar | Cuba Street

Enjoy a day where creatives and community groups take over city car parks. Calls for proposals close 15 January. Each successful proposal receives \$500. [sculpture.org.nz](http://sculpture.org.nz)

## Wellington Pride Parade

Sat 9 Mar | Courtenay Place,  
Dixon Street & lower Cuba Street

The iconic parade, celebrating Wellington's diverse communities and people, will feature a new parade route, street celebration and afterparty.

[wellingtonprideparade.co.nz](http://wellingtonprideparade.co.nz)

## Hurricanes vs Blues

Sat 9 Mar | Sky Stadium

Game starts at 7.05pm. [hurricanes.co.nz](http://hurricanes.co.nz)

## Memory Lines:

### Opening Weekend Talks

2pm-3pm, Sat 9 Mar | City Gallery

Join us for an afternoon programme of events that will offer you a deeper understanding of the artworks and themes of this group exhibition.

Donations appreciated. [citygallery.org.nz](http://citygallery.org.nz)

## Life Sciences Summit 2024

Mon 11 & Tue 12 Mar | Tākina

Connecting the biotech and life sciences ecosystem to grow, thrive and be competitive on the global stage.

[lifesciencessummit.co.nz](http://lifesciencessummit.co.nz)

## Jim Beam Homegrown

Sat 16 Mar | Wellington Waterfront

Kiwi music's biggest party is back on Wellington's waterfront this March! Bringing together 45 of New Zealand's best acts across a range of genres, over five main stages - there's something for everyone! [wellingtonnz.com/events](http://wellingtonnz.com/events)

### **Wellington Firebirds vs Otago Volts**

10.30am, Sat 16–Tue 19 Mar

Cello Basin Reserve

Plunket Shield. Free entry. [basinreserve.nz](https://basinreserve.nz)

### **CubaDupa Festival**

Sat 23 & Sun 24 Mar | Cuba Street

Celebrate the vibrancy, diversity, and unique creative spirit of Te Whanganui-a-Tara against the backdrop of Wellington's favourite street. [cubadupa.co.nz](https://cubadupa.co.nz)

### **Wellington Firebirds vs Northern Districts men**

10.30am, Sun 24–Thu 28 Mar

Cello Basin Reserve

Plunket Shield. Free entry. [basinreserve.nz](https://basinreserve.nz)

### **WHITE FERNS v England – T20s & ODI**

Wed 27 Mar, Fri 29 Mar, & Mon 1 Apr

Cello Basin Reserve

The WHITE FERNS play two T20s and an ODI against a world-class England team over the Easter period.

[wellingtonnz.com/events](https://wellingtonnz.com/events)

### **Wellington Phoenix A-League men FC vs Brisbane Roar**

7pm, Fri 29 Mar | Sky Stadium

[wellingtonphoenix.com](https://wellingtonphoenix.com)

### **Wellington Saints vs Auckland Tuatara**

Sun 31 Mar | TSB Arena

[saints.co.nz](https://saints.co.nz)

# Calling all sports fans!

**Lock in your ticket for all sport, all year with a Sky Stadium Membership.**

1 Jan 2024 – 31 Dec 2025 (24 month term).

\$2,245 inc GST per seat.

To reserve your seat:

➦ [www.skystadium.co.nz/membership](https://www.skystadium.co.nz/membership)

☎ 04 470 0416

\*Includes access to all cricket at the Basin Reserve.  
Terms and Conditions apply.





**PLAY SPACE FOR UNDER 5'S**  
**PLAYHQ, 4 QUEENS WHARF, WELLINGTON**  
**[CAPITALE.ORG.NZ](http://CAPITALE.ORG.NZ)**

Closed from 3.30pm Friday 22 December & reopens 9.30am Monday 15 January.  
Part of Experience Wellington. Principal Funder Wellington City Council.

# Mahi huringa āhuarangi pae matua

## Climate action capital

### Taking action together



We need to take urgent collective climate action to protect the people, places and lifestyle we love because we're in a climate and ecological emergency. The goal of our climate action plan, Te Atakura - First to Zero, is to reduce city emissions by 57 percent\* by 2030 and to be a net zero capital by 2050.

Though there's plenty of hard mahi to be done by everyone in the coming months and years, we're collectively making progress towards achieving these goals already. The Council is supporting shifts so we can live, work and play in low or zero carbon ways. We're doing this through city shaping, funding and facilitating solutions, and leading by example to reduce our own emissions.

To become a net zero carbon capital our focus is on reducing emissions from transport and urban form, building energy, city-wide initiatives, and advocacy. We're also working alongside communities to adapt to the impacts of climate change that can't be avoided.



## \$250k

Climate & Sustainability Fund fully allocated



## 89%

Council passenger vehicles now EVs or hybrids



## 64%

Reduction in energy use at Wellington Botanic Garden ki Paekākā



## 62%

Landfill emissions reduced through better methane capture

\*57% reduction of our 2020 emissions by 2030



AN EXHIBITION BY



Absolutely  
Positively  
Wellington  
*Me Heke Ki Poneke*

TE WHAKAATURANGA MĀROHIROHI O TE AO

**MARVEL**

**EARTH'S  
MIGHTIEST  
EXHIBITION**

© 2023 MARVEL

 **TĀKINA**  
Wellington Convention & Exhibition Centre

**OPENS  
DECEMBER 14<sup>TH</sup>  
2023**



# Explore Wellington in a new way

Summer is the perfect time of year to start something new. And one of the things we all love about Wellington is how compact it is - you're never far from the coast, the Town Belt, or a great spot for coffee and a touch of shopping.

So make the most of the warmer weather to get around in a new way and explore Wellington by bike, bus or pavement!

New bike and bus lanes have been popping up across the city over the past few years to make it easier for more people to get around in climate-positive ways.

- Take the scenic route between Miramar and Oriental Bay - heading along Cobham Drive and around Evans Bay. Stop at one of the bays or cafes along the way to take in the harbour views - look for kororā (little blue penguins).

- Pedal up new separated bike lanes between the city and Botanic Garden ki Paekākā before taking a break to smell the roses, then pop to Tinakori village to peruse the boutiques.
- Ditch the car at home for a day in the central city - catch a bus from your nearest stop then hop off to visit galleries or wander the waterfront with an ice cream.
- Why not make a habit of it? Getting around without relying on a car doesn't just reduce your transport costs, it's also a great way to boost your health with a dose of fresh air and exercise.

Visit [transportprojects.org.nz](https://transportprojects.org.nz) to see further planned bike routes

36km  
of bike network  
to explore so far



# Mahi toi Capital arts

## Coming up at Toi Pōneke Gallery

**Toi Pōneke Arts Centre residents:**

**Toi 500 - Eftpos and Carry**

Wed 13–Thu 21 Dec

Toi 500 annual residents' exhibition is a chance for audiences to grab an art bargain with works \$500 or under. Works presented by Anthea Hayley, David Brown, Franzeska Pound, Jane Hyder, Kedron Parker, Laura Woodward, Maria Colls, Odette Anscombe-Smith, Rebecca Mooney, Selene Simcox, Yon Yi Sohn, Terence Turner and more.

.....

**Connah Podmore: Ordinary Devotion**

Sat 13 Jan–Fri 9 Feb

*Ordinary Devotion*, by Pōneke artist Connah Podmore, is an installation of large-scale drawings and simple architectural interventions reflecting on the artist's own domestic spaces and experiences with motherhood. This exhibition follows on from an established line of work exploring interior surfaces, shadow, and the many histories layered within our homes.

.....

**Amanda Smith: This is the life that was**

Sat 17 Feb–Fri 15 Mar

*This is the life that was* attempts to make sense of life and the world of Amanda Smith; recognising private trauma and public chaos co-exist. Memory and time play a significant part in exploration, the unrealistic longing for times now gone and for times ahead.

Visit [toiponeke.nz](http://toiponeke.nz) | 61/69 Abel Smith Street



## Coming up at City Gallery Wellington

**Archive: alter / image**

On now until Sun 21 Jan

Thirty years after City Gallery Wellington opened in the former Wellington Public Library building, this exhibition brings together paintings, photography and film work, displaying them alongside archival documentation and ephemera, in order to revisit one of the opening suite of shows: *alter / image: Feminism and Representation in New Zealand Art 1973–1993*.



### ***Ngahuia Harrison: Coastal Cannibals***

On now until Sun 21 Jan

In *Coastal Cannibals*, Ngahuia Harrison (Ngātiwai, Ngāti Pukenga, Ngāti Kahu Torongare) uses photography and film-making to explore the impact of colonisation and government legislation on the land, water and people of Whangārei Te Rerenga Parāoa - The Whangārei Harbour.

### ***Eerie Pageantry***

On now until Sun 18 Feb

*Eerie Pageantry* calls forth the folk-horror-infused art of New Zealand modernist artist Don Driver and contemporary Australian artist Julia Robinson. It offers a cornucopia of folk horror and art played out through a ritualistic meeting of made and modified materials, textures, colours, tools, bodies and nightmares.

### ***Diane Arbus: A Box of Ten Photographs***

On now until Sun 14 Jan

This year marks the centenary of the birth of US photographer Diane Arbus (1923–1971). This exhibition showcases her legendary portfolio of 10 photographs which shifted the perception of photography and ushered its acceptance into the realm of ‘high art’.

### ***Angela Lane: Phosphene***

On now until Sun 18 Feb

Angela Lane paints wondrous scenes of atmospheric and celestial phenomena. Her small landscapes ask us to look up and out, but also back - especially to the long history of artistic and scientific exploration into the mysteries of the skies.

### ***Summer Exhibitions***

From Sat 3 Feb

Our summer season will open with the group exhibition *Memory Lines*, and a series of solo exhibitions by artists Julia Morison, Michael Mahne Lamb, Ahsin Ahsin, and Julian Hooper.

Visit [citygallery.org.nz](http://citygallery.org.nz) | Te Ngākau Civic Square

### ***Courtenay Place Light Boxes***

#### ***Ben Lowe: Here***

On now until Mon 12 Feb

*Here* features photographs taken by Ben Lowe between 2021–23 while hiking amongst Wellington’s South Coast, Te Rimurapa/Sinclair’s Head. The photos were taken with long exposures using the night sky to light the work. By letting the old light from the stars imbue itself over long durations, the photographs allow us to experience a place differently. They transport us to a parallel world of time through the interplay of light trails of distant stars, people, planes, ships and meteors - igniting our imaginations.



#### ***Previous page (top to bottom)***

Amanda Smith, *This is the life that was*

Christine Webster *Therapies 4 (iv)* 2014, courtesy the artist and Trish Clark Gallery

#### ***Above***

Ben Lowe, *Here*

## Te Whakaaturanga o Te Aro Pā

*Tom Trengrove and David Hakaraia  
(Ngāti Paoa & Ngāpuhi):  
Heke ki Ponekeneke*

Until Jan | 115 Manners Street

A new animation at this outdoor video screen exhibition space celebrates the rich heritage of the area and the iwi who connect to the surrounding whenua.

*Heke ki Ponekeneke* shows the story of Ngāti Toa, Te Āti Awa, and their allies, on their migration down to Te Whanganui-a-Tara, and the series of battles that reshaped the region's power dynamics.

**[wellington.govt.nz/te-aropaa-video-screens](https://wellington.govt.nz/te-aropaa-video-screens)**

## Forty years of public art in the capital

The not-for-profit charitable Wellington Sculpture Trust

has been providing contemporary public art to the city for 40 years, having installed 30 permanent works over this time. They celebrate their 40th anniversary this year with HALO, a virtual sculpture over Wellington Harbour. Scan the QR code on the waterfront near Te Papa and the Star Boating Club. **[sculpture.org.nz](https://sculpture.org.nz)**



**WELLINGTON CABLE CAR**  
NEW ZEALAND

## A 2024 CALENDAR WITH A PAW-POSE!

A calendar created with our Wellington locals and their furry friends.

To purchase or find out more, visit [wellingtoncablecar.co.nz](https://wellingtoncablecar.co.nz)

 **ALL PROCEEDS TO**  
**Blind Low Vision NZ**  
Guide Dogs

PHOTO CREDIT:  
WELLINGTONNZ

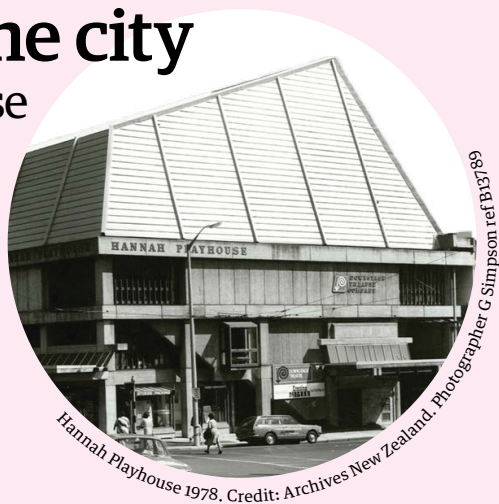


# 50 years of creativity in the city

## The Hannah Playhouse

The iconic Hannah Playhouse, on the corner of Cambridge Terrace and Courtenay Place, celebrates its 50th anniversary this year, having opened the doors to its first performance - Shakespeare's *As You Like It* - in 1973.

To celebrate this milestone, discover the Playhouse through the ongoing exhibition, *The Hannah Playhouse - Full of Life*, on display throughout the building.



### Five things you may not know about the Hannah:

- 1 Sheilah Winn established a trust fund for the erection of “an intimate theatre” in Wellington. In 1968, Downstage made a successful proposal through The Queen Elizabeth II Arts Council (now Creative New Zealand). A further \$100,000 was raised (over \$1.7million in today’s money), with Council contributing, and construction started in 1971. The Hannah Playhouse was named after Sheilah’s maternal Hannah family - her grandfather Robert Hannah founded the Hannah’s shoe company.
- 2 Architect James Beard added his signature New Brutalism to the building. The walls are constructed of reinforced block, exposed concrete, and built independently of the floors and columns to minimise earthquake impact.
- 3 The theatre is a unique, asymmetric performance space, that can be reconfigured for each performance. The Hannah Playhouse has won multiple awards for its design.
- 4 “Break a leg” took on a whole different meaning in the first play when the lead actress, Janice Finn, was hit by a motorcycle when leaving a dress rehearsal. She was ably replaced by actress Catherine Wilkin, who went on carrying her script in a velvet binding.
- 5 In October 2022 the Wellington City Council took over managing the Hannah in partnership with The Hannah Playhouse Trust, renewing the theatre as a performance laboratory for artists and organisations to develop their professional performing arts practice and new works. The Hannah Playhouse seats 250. Check out what is on at [hannahplayhouse.org.nz](http://hannahplayhouse.org.nz)

# Kaupapa pūtea Funding

We have a range of funds available for community groups and projects to help make our city a better place.

## Social wellbeing pūtea

We support local community projects and organisations that help make the city safer and more resilient and connected through a range of funds for projects, events and services, including support for local resident groups and associations. The *Sports Events Partnership Fund* for regional/national tournaments and events **closes on 17 March 2024**. The *CH Izard Bequest* and the *Social and Recreation Fund* both **close on 28 March 2024**.

## Climate and sustainability pūtea

Community groups, businesses, schools, and Māori entities can develop climate action initiatives through our *Climate and Sustainability Fund*. Priorities include supporting projects that are Māori-led and/or can demonstrate measurable emissions reductions.

Look at our past funding list for ideas and reach out to our team to explore whether this fund could be a good fit or whether you can get involved with projects we have already supported. **Closes 28 March 2024**.

## Arts pūtea

Our *Arts and Culture Fund* supports creative projects in the city that help deliver our Aho Tini outcomes: Aho Tangata (Our People), Aho Hononga (Partnership with Māori), Aho Whenua (Our Places), and Aho Mahi (Pathways). **Closes 28 March 2024**.

The *Creative Communities Funding Scheme* supports local arts activities that encourage participation in the arts in Pōneke. We are particularly keen to hear from young people (especially those under 18 years) who want to develop and present their own creative projects. For this fund we accept applications from individuals and groups who are starting out. If you have an idea, reach out to our team.

**Applications close 29 February 2024.**

Each fund has a web page that includes the name and number of a contact person, who you can connect with to talk through your ideas before completing your online application. Visit [wellington.govt.nz/funding](https://wellington.govt.nz/funding) to see what we have funded before, closing dates, and kaimahi (staff) contact details.

**\$4.9million**  
funding given to community  
projects and organisations

# Ngā hui a te Kaunihera, ngā komiti me ngā poari ā-hapori Council, committee and community board meetings

Council and Committee meetings are livestreamed via our YouTube page, so please tune in at [youtube.com/WgtnCC](https://www.youtube.com/WgtnCC). You are also welcome to attend any meeting listed.

Meeting dates and locations sometimes need to change, so please check final details at [wellington.govt.nz/meetings](https://www.wellington.govt.nz/meetings) or phone **04 499 4444**.

**Mon 4 Dec**

9.30am - Wellington Region Waste Management and Minimisation Plan Joint Committee

**Wed 6 Dec**

9.30am - Pitau Pūmanawa Grants Subcommittee  
6pm - Pacific Advisory Group

**Thu 7 Dec**

9.30am - Kōrau Tōtōpū Long-term Plan, Finance, and Performance Committee  
7pm - Mākara/Ōhariau Community Board (Ōhariau Valley Hall)

**Mon 11 Dec**

5pm - Environmental Reference Group  
7pm - Tawa Community Board (Tawa Community Centre)

**Wed 13 Dec**

9.30am - Koata Hātepe Regulatory Processes Committee  
6pm - Takatāpui and Rainbow Advisory Council

**Thu 14 Dec**

9.30am - Te Kaunihera o Pōneke | Council

**Tue 30 Jan**

5.30pm - Accessibility Advisory Group

**Thu 1 Feb**

9.30am - Kōrau Tūāpapa Environment and Infrastructure Committee  
7pm - Mākara/Ōhariau Community Board (Mākara Community Hall)

**Wed 7 Feb**

4pm - Youth Council

**Thu 8 Feb**

9.30am - Kōrau Tōtōpū Long-term Plan, Finance, and Performance Committee

**Mon 12 Feb**

5pm - Environmental Reference Group

**Wed 14 Feb**

6pm - Pacific Advisory Group

**Mon 19 Feb**

7pm - Tawa Community Board (Tawa Community Centre)

**Wed 21 Feb**

9.30am - Unaunahi Māhirahira Audit and Risk Committee  
4pm - Youth Council  
6pm - Takatāpui and Rainbow Advisory Council

**Thu 22 Feb**

9.30am - Koata Hātepe Regulatory Processes Committee

**Tue 27 Feb**

5.30pm - Accessibility Advisory Group

**Thu 29 Feb**

9.30am - Kōrau Mātinitini Social, Cultural, and Economic Committee

**Wed 6 Mar**

9.30am - Kōrau Tōtōpū Long-term Plan, Finance, and Performance Committee  
4pm - Youth Council

**Thu 7 Mar**

9.30am - Te Kaunihera o Pōneke | Council

**Wed 13 Mar**

9.30am - Pitau Pūmanawa Grants Subcommittee  
6pm - Pacific Advisory Group

**Thu 14 Mar**

9.30am - Kōrau Tūāpapa Environment and Infrastructure Committee  
7pm - Mākara/Ōhariau Community Board (Ōhariau Valley Hall)

**Mon 18 Mar**

7pm - Tawa Community Board (Tawa Community Centre)

**Wed 20 Mar**

4pm - Youth Council

**Thu 28 Mar**

9.30am - Kōrau Tōtōpū Long-term Plan, Finance, and Performance Committee

All meetings take place at Council headquarters, 113 The Terrace, or in the suburbs for Community Board meetings.

# Te Koromatua me ngā Kaikaunihera

## The Mayor and Councillors

### Citywide



**Tory Whanau** Mayor

Mayor@wcc.govt.nz

**Chair**

Te Kaunihera o Pōneke | Council

Unaunahi Ngaio | Chief Executive  
Performance Review Committee

### Paekawakawa/Southern Ward



**Laurie Foon** Deputy Mayor

Laurie.Foon@wcc.govt.nz

**Deputy Chair**

Te Kaunihera o Pōneke | Council

Unaunahi Ngaio | Chief Executive  
Performance Review Committee



**Nureddin Abdurahman**

Nureddin.Abdurahman@wcc.govt.nz

**Deputy Chair**

Kōrau Mātinitini | Social, Cultural,  
and Economic Committee

### Takapū/Northern Ward



**Ben McNulty**

Ben.McNulty@wcc.govt.nz

**Deputy Chair**

Koata Hātepe | Regulatory  
Processes Committee



**Tony Randle**

Tony.Randle@wcc.govt.nz

**Deputy Chair**

Unaunahi Māhirahira  
Audit and Risk Committee



**John Apanowicz**

John.Apanowicz@wcc.govt.nz

**Deputy Chair**

Kōrau Tōtōpū | Long-term Plan,  
Finance, and Performance  
Committee

### Te Whanganui-a-Tara/ Māori Ward



**Nikau Wi Neera**

Nikau.WiNeera@wcc.govt.nz

**Deputy Chair**

Pītau Pūmanawa  
Grants Subcommittee



**Liz Kelly**

liz.kelly@wcc.govt.nz



**Holden Hohaia**

holden.hohaia@wcc.govt.nz

Not sure which ward you're in? Visit [wellington.govt.nz/wards](https://wellington.govt.nz/wards)

.....

**Pukehinau/Lambton Ward**



**Iona Pannett**

Iona.Pannett@wcc.govt.nz

**Chair**

Wellington Region Waste  
Management and Minimisation  
Plan Joint Committee



**Nicola Young**

Nicola.Young@wcc.govt.nz

**Chair**

Pitau Pūmanawa  
Grants Subcommittee



**Vacant**

By-election to be held  
from 26 January to 12noon,  
17 February, 2024

.....

**Wharangi/Onslow-Western Ward**



**Diane Calvert**

Diane.Calvert@wcc.govt.nz



**Ray Chung**

Ray.Chung@wcc.govt.nz



**Rebecca Matthews**

Rebecca.Matthews@wcc.govt.nz

**Chair**

Kōrau Tōtōpū | Long-term Plan,  
Finance, and Performance Committee

.....

**Motukairangi/Eastern Ward**



**Sarah Free**

Sarah.Free@wcc.govt.nz

**Chair**

Koata Hātepe | Regulatory  
Processes Committee



**Tim Brown**

Tim.Brown@wcc.govt.nz

**Acting Chair**

Kōrau Tūāpapa | Environment  
and Infrastructure Committee



**Teri O'Neill**

Teri.O'Neill@wcc.govt.nz

**Chair**

Kōrau Mātinitini | Social, Cultural,  
and Economic Committee

Wellington City Council presents

# Summer events



Free



## Christmas in the Quarters


11am–5pm, Sat 2, 9 & 16 December

## New Year's Eve

8pm–midnight, Sun 31 December  
Wharepo Lagoon

## Gardens Magic

9–28 January  
Botanic Garden ki Paekākā  
Concert Series, Light Display,  
Kids Garden Trail & Explorer Days



## Te Rā o Waitangi

12 noon–6pm, Tue 6 February  
Waitangi Park

## Wellington Pasifika Festival

12 noon–6pm, Sat 10 February  
Waitangi Park



[wellington.govt.nz/events](https://wellington.govt.nz/events)

Absolutely Positively  
**Wellington** City Council  
Me Heke Ki Pōneke