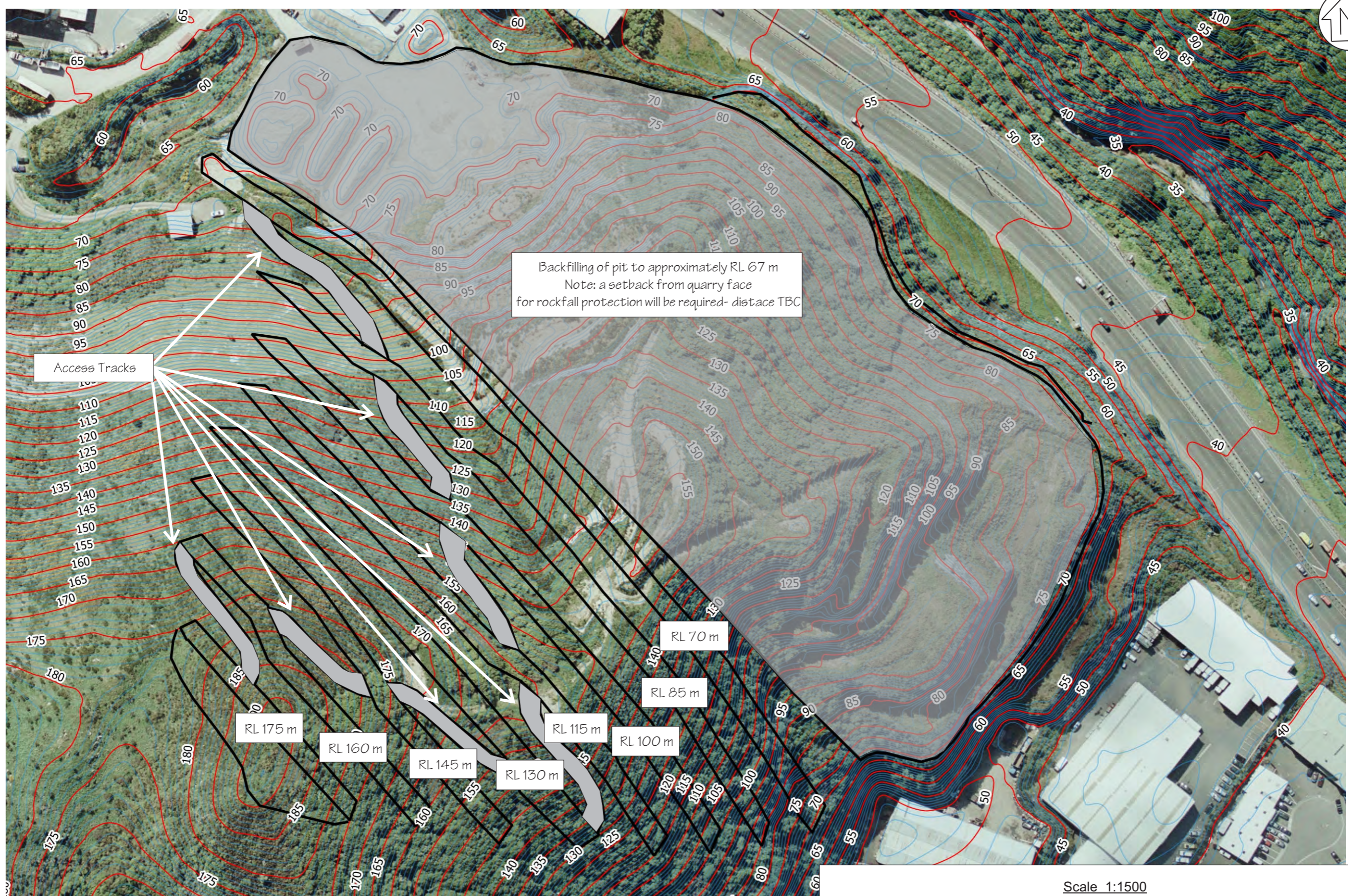


Appendix C

Rehabilitation Plan



Backfilling of pit to approximately RL 67 m
 Note: a setback from quarry face
 for rockfall protection will be required- distace TBC

Access Tracks

RL 175 m

RL 160 m

RL 145 m

RL 130 m

RL 115 m

RL 100 m

RL 70 m

RL 85 m

NOTE: Plan based on aerial photograph and survey produced by Precision Aerial Surveys, December 2015

ORMISTON ASSOCIATES LTD
 CONSULTANTS IN GEOTECHNICAL ENGINEERING, GEOLOGY & ENGINEERING GEC

Level 2, 90 Symonds Street, Auckland City
 P O Box 47-822, Ponsonby, Auckland 1144, New Zealand
 Ph (09) 302 2193 Fax (09) 302 2197 Email: mail@ormiston.co.nz

CLIENT: Holcim NZ Ltd.
LOCATION: Kiwi Point Quarry, South Ridge
TITLE: Open Space B Rehabilitated Quarry Plan

SCALE: 1:1500 @ A3
DRAWN: LMV
DATE: 7 September 2016
CHECKED: AWO

DRAWING NO
 3655-SR30
SHEET 7 OF 7