

# Planning Tawa town centre

Earlier this year we consulted with local residents and businesses about the town centre's future. Here we present potential options for improving the town centre.

## Issues identified

The town centre suffers from:

- poor performance: several vacant shops, and issues retaining and attracting businesses
- being dull and lacking character
- environment: vehicle speed and heavy traffic conflict with making the centre attractive for shoppers and visitors.

## Potential improvements

The improvements presented are grouped by aim:

- strengthen identity
- improve public spaces
- manage traffic

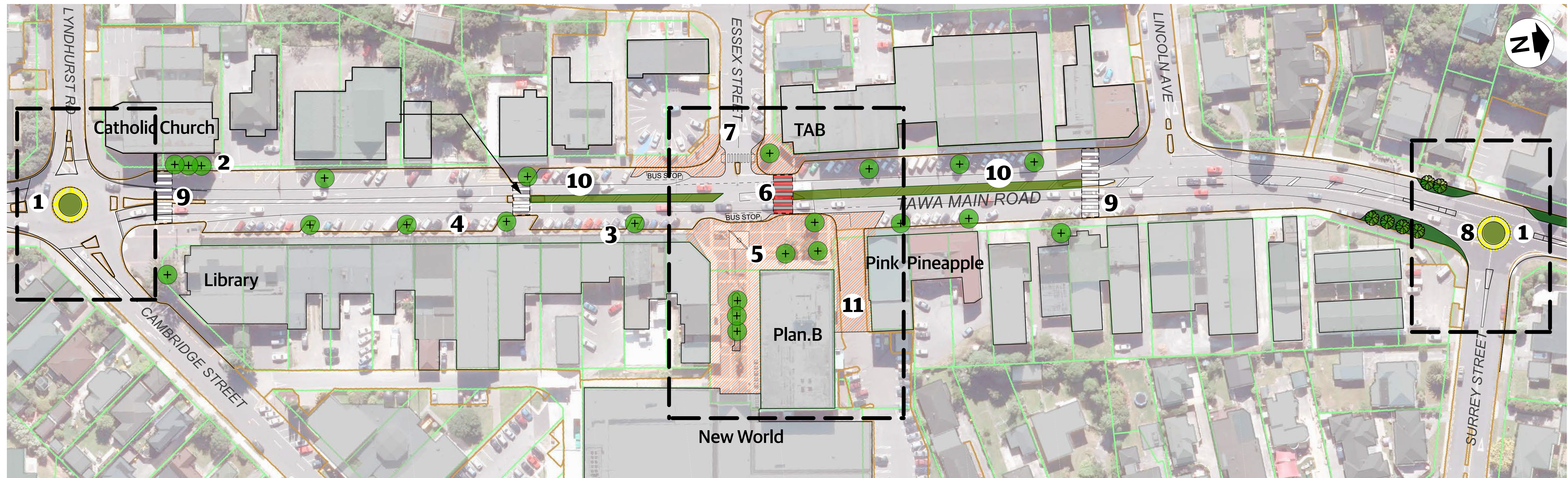


Tawa town centre now





# All potential improvements



Concept plan

## Strengthen identity

- 1** Create gateway features at town centre entrances
- 2** Light landmarks such as trees or buildings
- 3** Add colour throughout the centre
- 4** Help improve shop fronts, verandahs and signage

## Improve public spaces

- 5** Upgrade the space in front of the Plan.B building
- 6** Raise pedestrian crossings
- 7** Reconfigure the Essex Street access

## Manage traffic

- 8** Create a new roundabout
- 9** Formalise pedestrian crossings
- 10** Raise and plant the central median
- 11** Close the lane next to The Pink Pineapple



# Strengthen identity

## 1 Create gateway features

- We can create visible gateway features at either end of the town centre, such as artwork, planting or signage
- We can change pavements, planting and other street features.

Example of a gateway feature at Cambridge Street roundabout



Zephyrometer: gateway artwork near Wellington Airport



## 2 & 3 Lighting and colour

- We can add lighting to landmarks such as trees or buildings
- We can add colour with planting, flags, murals and other devices.

Example of feature lighting trees



Local mural and colour improvements



## 4 Help improve shop fronts

- We can support improvements to verandahs and signage; including consistent colours and styles for the centre.

Consistent signage can improve shop fronts



Examples of improved shop fronts



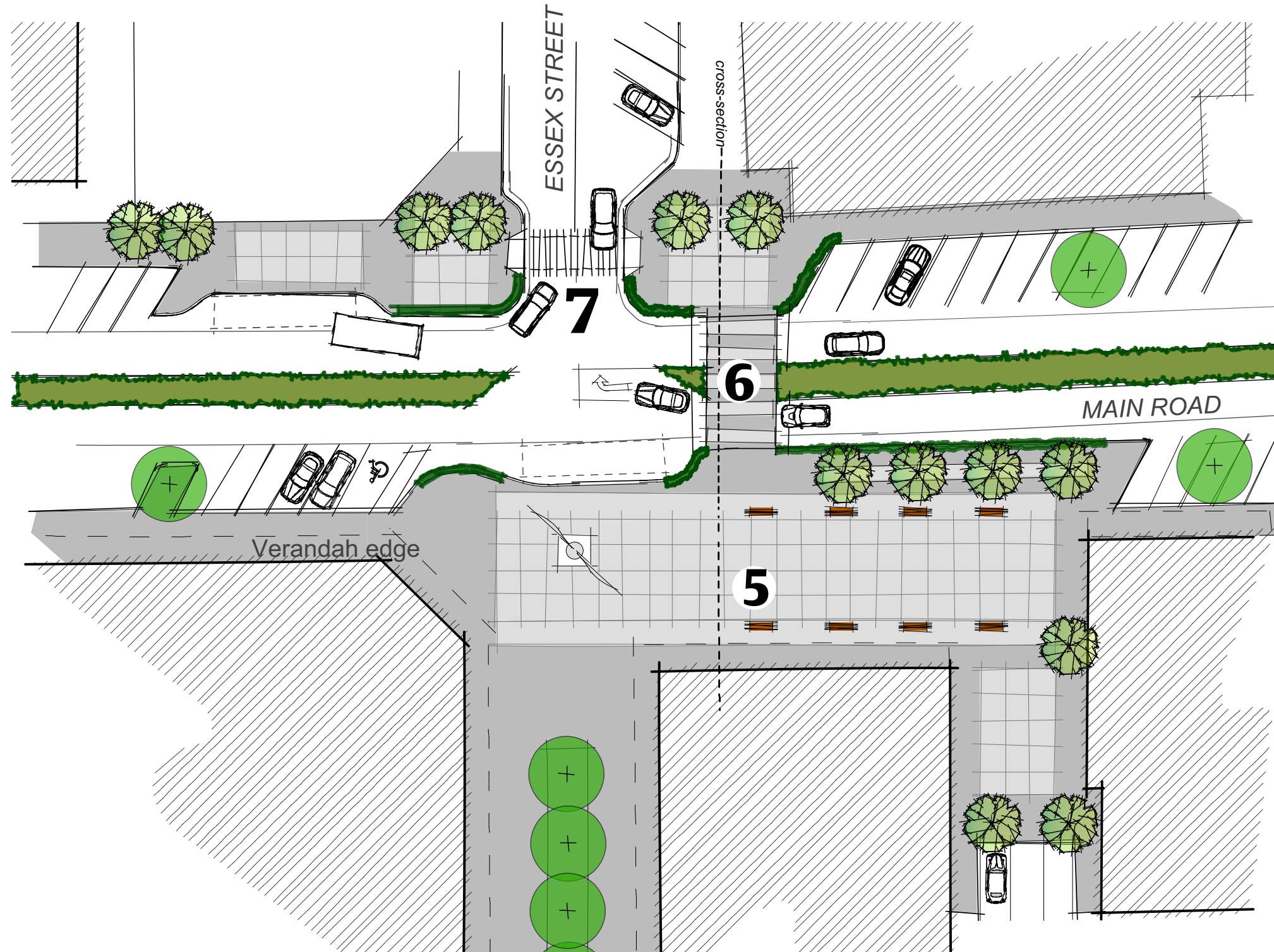


# Improve public spaces

Existing Tawa Plaza



Plan for Tawa Plaza area



## 5 Upgrade the space in front of the Plan.B building

- Extending the Tawa Plaza to create a better public space may involve new paving, seating, lighting, planting and possibly closing the lane next to The Pink Pineapple. This will create a sheltered and sunny public space.

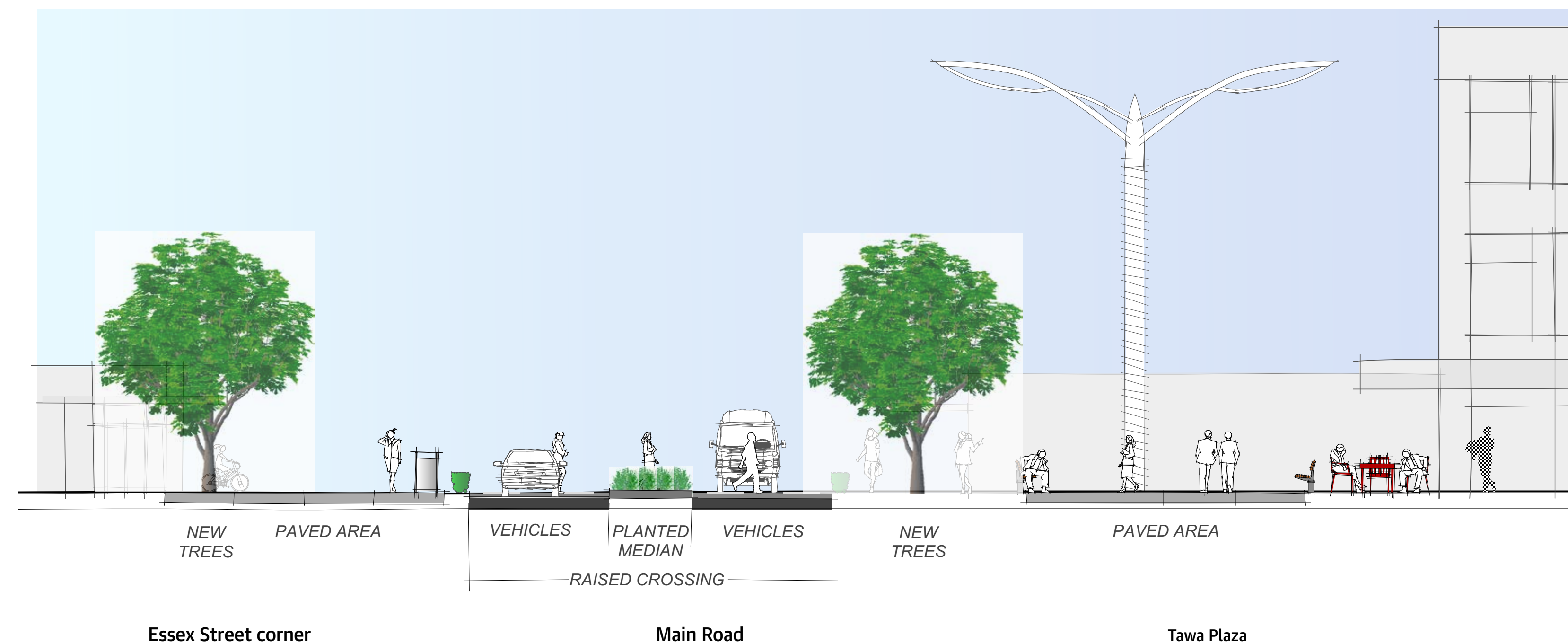
## 6 Raise the pedestrian crossing

- Raising the pedestrian crossing between the Plaza and Essex Street side will improve connections, slow the traffic for pedestrians, and signal the 'heart' of the centre.

## 7 Reconfigure the Essex Street access

- Changing the kerbs and planting trees at the Essex Street intersection will improve pedestrian amenity and safety.

Cross-section: raised pedestrian crossing, plaza and footpath





# Manage traffic

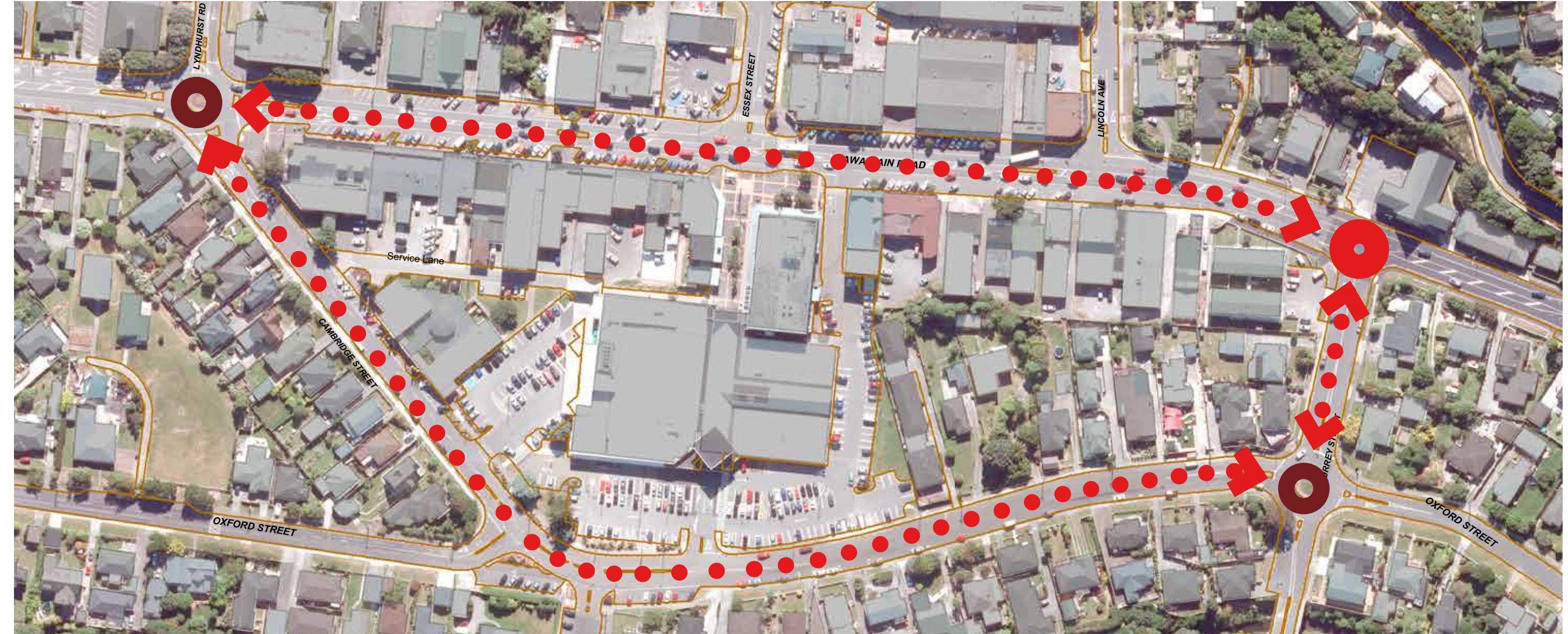
Example of raised pedestrian crossing



Example of planted median



Traffic management: improved traffic flow with roundabouts



## 8 Create a new roundabout

- A new roundabout at the Main Road and Surrey Street junction would help slow traffic and make it safer for Surrey Street traffic to turn north.

## 9 Create formal pedestrian crossings

- Pedestrian crossings would make movements safer and help reduce vehicle speeds.

## 10 Raise and plant central median

- A raised central median reminds motorists to drive carefully through the busiest part of the town centre, and helps create an attractive environment.

## 11 Close the lane next to The Pink Pineapple

- Closing this lane would re-direct traffic from Main Road, and remove vehicles from the pedestrian hub around the plaza, including the possible new space.