

Interested in your local park? Have your say on the Draft Suburban Reserves Management Plan 2014

We need your feedback and ideas by 5pm, Friday 5 December 2014.



The Draft Suburban Reserves Management Plan

Wellington City Council has prepared a new draft reserve management plan for the 168 local parks, reserves and protected open spaces in the suburban areas between Khandallah and Miramar (including Makara). (Please refer to Map 1 on opposite page.) The suburban reserves north of Khandallah are already covered in the Northern Reserves Management Plan.

The draft plan provides clear guidance for the adequate provision and management of suburban reserves for the next 10 years. The draft plan is consistent with *Our Capital Spaces – an Open Space and Recreation Framework for Wellington* and ensures that nearly all areas of Council-owned and administered open spaces are managed under a Reserve Management Plan.

The draft plan has been structured around five chapters with two appendices.

Chapter 1. Outlines the plan’s purpose, coverage and structure and provides an overview of the suburban reserves and the planning framework.

Chapter 2. Provides the general objectives and common policies that can be applied across all suburban reserves. The five key themes are: Landscape; Recreation; Ecology and Biodiversity; Culture and History; and Community Groups and Partnerships.

Chapter 3. Provides a series of eight sector plans based on clusters of suburbs, and includes an assessment of park values, purpose, and provision of play areas within each sector. Each sector plan identifies potential actions, both at individual park level and at network level.

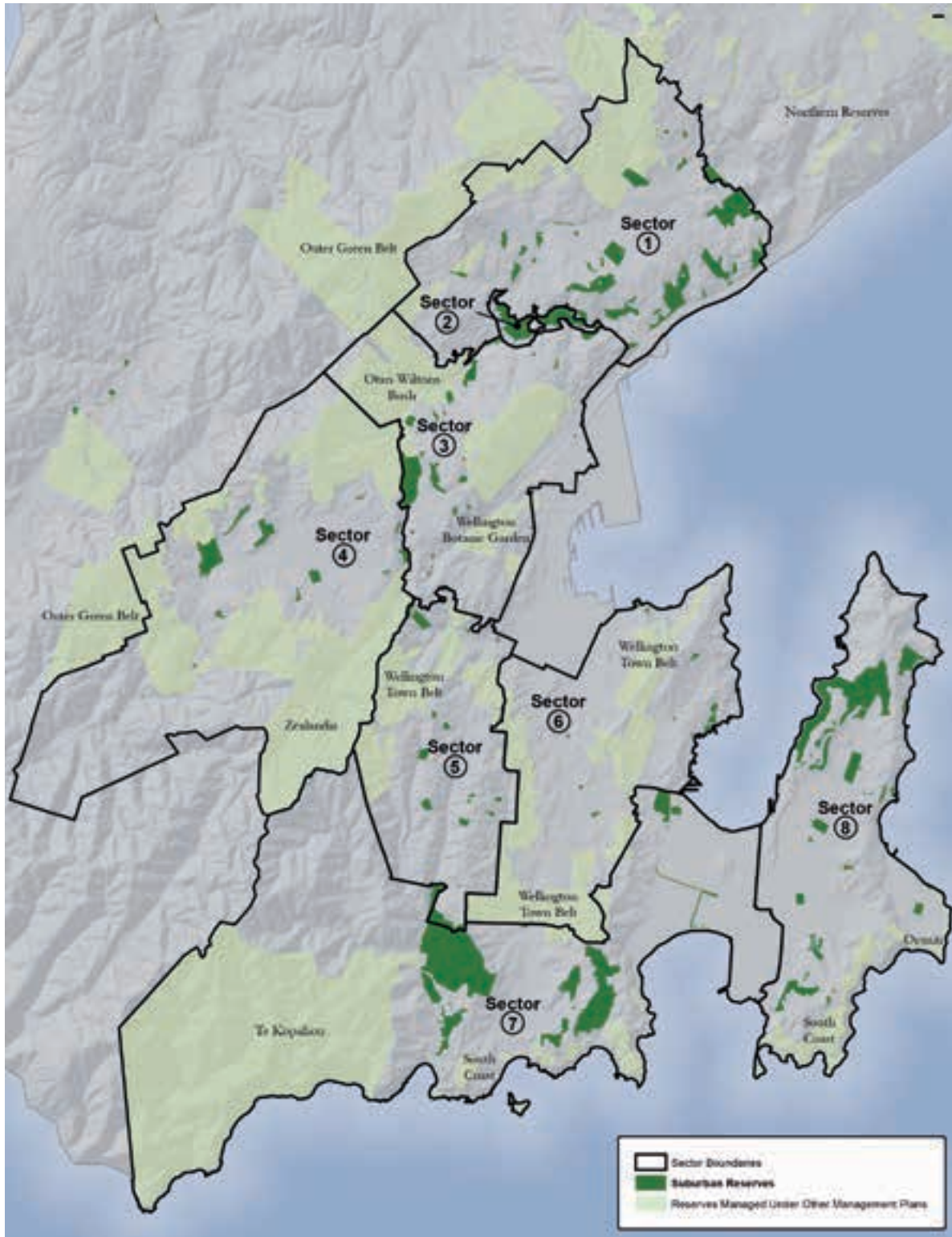
Chapter 4. Includes the rules for use and development.

Chapter 5. An implementation plan will be developed and published with the final plan based on the actions identified in each sector and in response to submissions made on the draft plan.

New Zealand Recreation Association Reserve Categories (Appendix 1 of the Plan)
- A description of each reserve category.

Proposed Reserve Classification (Appendix 2 of the Plan) - A detailed description and assessment of the reserves covered under this plan that need to be classified or reclassified under the Reserves Act 1977, consistent with their current use and values.

Map 1 - sector map showing Suburban Reserves of Wellington



What are the suburban reserves of Wellington?

Wellington's 168 suburban reserves are the local neighbourhood parks - including play areas, sport and recreation parks, and natural and cultural areas of protected open space - that are located between Khandallah and Miramar (including Makara).

They're not part of the Wellington Town Belt, Outer Green Belt, South Coast or the Northern Reserves Management Plans but connect these larger areas of open space and provide local recreation opportunities.

While part of the citywide open space framework, our suburban reserves also play an important role in helping to create a 'sense of place' within our neighbourhoods. They contribute to our rich quality of life, protect our natural environment, encourage physical activity and bring people together.

As there is limited opportunity to develop new parks and reserves within our established suburbs, the existing ones need to be carefully planned for and managed to ensure they meet the growing and changing needs of our community.

Suburban reserves planning

The preparation of the Draft Suburban Reserves Management Plan followed four key planning stages:

1. Each park was categorised based on its primary purpose

To understand the current and potential values of the suburban reserves network and manage the parks most effectively, each reserve has been categorised¹. The category relates to a primary purpose². While many

parks are (and should be) multi-purpose, allocating each a primary purpose allowed us to think more clearly about the range of parks we have across the suburban areas.

The categories are used throughout the plan to consider both wider park network values and values of the individual parks.

Park categories used in the Draft Plan are;

Neighbourhood (community)

Larger, multiple use spaces (generally 3000m² minimum area) with an emphasis on providing for the needs of the wider community, provide for a range of informal recreation activities for all age groups and may be located near or adjacent to other community facilities (eg a library, suburban or town centre, Plunket, childcare space).

Neighbourhood (local)

Smaller, lower profile spaces (generally less than 3000m²) often located on a pedestrian/commuting route and typically bordered on several sides by houses. They provide for local neighbourhood informal recreation, may contain no built infrastructure (ie comprise a flat or open grass space with some trees) but may also provide neighbourhood amenity alongside a specific function (such as a play area or a dog exercise area).

Neighbourhood (amenity)

Small (generally less than 1000m²) areas of open space that contribute to the character and amenity of a neighbourhood through provision of pockets of open space and/or sites for amenity trees and other vegetation. Access and use is often constrained by topography, shape, or location in relation to the surrounding area but often with important cumulative values across the reserves network and local neighbourhood.

¹ Wellington City Council Parks Categories are based on best practice guidance provided by the New Zealand Recreation Association (NZRA Parks Categories and Levels of Service Guideline 2011)

² Refer to Appendix One in the draft plan for Wellington City Council Parks Category definitions.

Sport and Recreation (community)

Parks with a primary purpose of providing for sport and recreation activity, recreation facilities and buildings. Often multiple uses and values with a focus on organised recreation and sports field provision. Types of use/value include social sports, active recreation, informal sports and recreation, walking, amenity and access to open space and the natural environment.

Sport and Recreation (local)

Sport and recreation activity for the local area. Smaller scale, smaller area and less infrastructure than the Sport and Recreation (community) category. May be multiple use. Generally one sports field used by organised junior sport and for informal sport. May

also provide for; other social sport, active recreation, informal recreation, walking, amenity and access to open space and the natural environment.

Cultural Heritage

Protection of built cultural and historical environment to provide for commemoration, mourning and remembrance. Often multiple values, for example, amenity and ecological value in addition to heritage.

Natural

Experience and/or protection of the natural environment. Types of use/value include; conservation, ecological restoration/enhancement, access to the natural environment, walking/cycling,



information/education/interpretation, open space, ecosystem management, low impact recreation, landscape protection. Typical characteristics include remnant and regenerating native vegetation, stream and the associated catchment, and coastal areas. Large areas of open space (generally over 4 hectares) sometimes inaccessible but generally include informal recreation opportunities and low key infrastructure throughout.

Recreation and/or Ecological Linkages

These provide open space, linkages and corridors, water margins and protection of the natural environment recreation links between parks and within neighbourhoods. Often provides only an ecological link but both an ecological and recreation link where possible (often constrained by topography in Wellington). Make an important contribution to local and citywide amenity and sense of place.

2. Each reserve's classification was reviewed based on its category and primary purpose

There is a statutory requirement to classify reserves under the Reserves Act 1977 to help direct their management, usage and development. Identifying the primary purpose of the reserves and placing them in a category enabled the selection of an appropriate Reserves Act classification. The reserves to be either classified or reclassified have been identified under each sector and a full description and analysis is available in Appendix 2 of the draft plan.

3. A quality assessment of specific parks was undertaken

A quality assessment for sport and recreation and neighbourhood parks helped to inform the plan with a focus on operational and maintenance type information.

4. Each sector was reviewed to identify gaps in provision, look at connections and recommend improvements and opportunities

Our Capital Spaces proposes a guideline that people should live or work no more than a 10-minute walk (around 600 metres) from a park, play space or other outdoor recreation opportunity such as a track link.

The Playgrounds Policy recommends that:

- a significant majority of dwellings should be within 800 metres of a community playground
- a significant majority of dwellings should be within 600 metres of a local playground

To determine how well the reserves network meets these guidelines, we mapped general provision and formal play provision in each sector. This enabled us to see where gaps and overlaps could be addressed. This is discussed in detail in Chapter 2.2 (Recreation) and in each sector of the plan. In general, Wellington residents in suburban areas have good access to outdoor recreation opportunities.



In general, Wellington residents in suburban areas have good access to outdoor recreation opportunities.

What are the plan's general objectives?

• Landscape

Suburban reserves vary in size, character, distribution, function and quality. As well as featuring natural landforms and supporting vegetation, they help to define local suburban character.

The Council aims to preserve the natural character of suburban reserves by protecting and enhancing significant landscape features (eg the Brooklyn War Memorial knoll), identifying and protecting important vegetation (eg the native forest in Trelissick Park) and providing corridors of vegetation as an essential component of the suburban environment.

Built development will only occur on suburban reserves if it is necessary for community or public recreation and cannot be located elsewhere. Any development will be sensitively designed and implemented to protect the landscape and open space values of the suburban reserve network. Structures, buildings and furniture no longer required will be removed as soon as practicable.

The Council will investigate options to provide and improve access to open space and play areas where gaps in provision have been identified.

• Recreation

Suburban reserves provide for a range of outdoor recreation activities and uses.

The range of recreation and leisure activities includes informal activities, organised sports and programmed activities, private club or group activities and commercial activities such as recreation concessions.

The plan looks at the provision of open space for recreation between Khandallah and Miramar, with more detailed analysis provided in each sector plan.

In general, there is very good provision of access to outdoor recreation space, including play areas, across the suburban areas of Wellington covered under the plan.

The Council intends to provide a wide range of quality open space and outdoor recreation opportunities close to where people live and work, connect local communities and open space and increase participation in sport and recreation.

The Council will investigate options to provide and improve access to open space and play areas where gaps in provision have been identified. For example, northern Khandallah, eastern Karori and northern Island Bay. More creative play opportunities will be encouraged through the development of neighbourhood parks such as Miramar and Vogelhorn parks.

More tracks will be developed that are accessible and usable by people with limited mobility, push chairs and wheelchairs, and we will partner with Sport Wellington to organise and promote sport and recreation development opportunities for clubs.

We will also look at the integrated development of large sport and recreation parks, such as Kilbirnie Park.



The Council aims to protect, restore and connect indigenous biodiversity and indigenous ecosystems within and between suburban reserves.

- **Ecology and biodiversity**

The plan will focus on the connectedness of ecosystems and enhancing the ecology of individual reserves.

Our larger reserve areas, such as the Wellington Town Belt, Outer Green Belt and the South Coast, provide the most significant opportunities for citywide ecological function and core habitat for our indigenous species. Our smaller suburban reserve areas allow these species to travel between larger areas.

Trelissick Park and 17 other suburban reserves have been categorised as ‘natural’ parks with the primary purpose of protecting the natural environment. The smaller parks - as well as individual trees - when considered as part of a network, make a significant contribution to citywide biodiversity.

The Council aims to protect, restore and connect indigenous biodiversity and indigenous ecosystems within and between suburban reserves. This will be achieved by identifying and prioritising ecologically significant areas, protecting and restoring existing stream habitats, such as Kaiwharawhara and Owhiro Stream catchments, and protecting and enhancing the large tree network.

We will also incorporate opportunities for biodiversity enhancement in park development plans, work collaboratively with other organisations and monitor the suburban reserve ecology as part of the Council’s citywide monitoring programmes, including bird monitoring.

- **Culture and history**

This plan highlights the key historical values in relation to the suburban reserves between Khandallah and Miramar. Many reserves that have no visible heritage items or obvious heritage significance have their own ‘story’ associated with how they came to be public open space that when told can add to the layers of value associated with a reserve and enhance a sense of community and stewardship for local residents and users of the space.

Within the reserves areas covered by the plan there are 6 sites of particular cultural and heritage interest:

- Bridle Track
- Brooklyn War Memorial
- Cog Park and Patent Slip
- Fort Buckley
- Miramar Bowling Club Pavilion
- Trelissick Park Magazine Store.

These sites and features are fully described in the plan, along with appropriate management policies in the sector plans.

The Council intends to identify, manage and protect significant historical and cultural features and values of suburban reserves. This will be achieved by using recognised conservation principles and policies, and consulting with Heritage NZ and mana whenua. Where possible, any proposed works will avoid recorded archaeological sites.

The cultural heritage of suburban reserves will be appreciated and enhanced through research and interpretation. Interpretation will be carried out in partnership with mana whenua and, where possible, Māori place names will be used.

- **Community groups and partnerships**

Whether it’s through advocacy, restoration projects, pest control programmes or managing a sport and recreation facility, there’s always been public involvement in the management, development and protection of suburban reserves. Examples of great community partnerships include the Makara Peak Mountain Bike Park, the Berhampore Golf Course, community gardens and orchards in public open spaces, and the restoration of Trelissick Park.

The future of the suburban reserves network depends on increasing the active involvement of the community. Council officers and community groups need to work closely in organising projects that align with the objectives of this management plan.

Council intends to manage the suburban reserves on behalf and in partnership with the wider Wellington community. This will be achieved by providing opportunities for the community to get involved, supporting beautification of suburban reserves by adjacent property owners, working in partnership with mana whenua, and encouraging and supporting environmental education initiatives in suburban reserves.

Council intends to manage the suburban reserves on behalf and in partnership with the wider Wellington community.

What are the key actions in each suburban sector?

Sector 1 - Khandallah, Broadmeadows, Ngaio, Crofton Downs and Kaiwharawhara

These suburbs occupy comparatively narrow valleys and basins. The northern end forms the higher reaches of the Porirua Stream valley. The hills of the Outer Green Belt extend down to Broadmeadows, Khandallah, Ngaio and Crofton Downs, creating a green backdrop and outlook, while providing significant open space and recreation opportunities.

The reserves in this sector connect the Harbour Escarpment and the Outer Green Belt. The Harbour Escarpment and bush gullies off Onslow and Homebush Roads are a unique feature of this sector. Many of the bush reserves

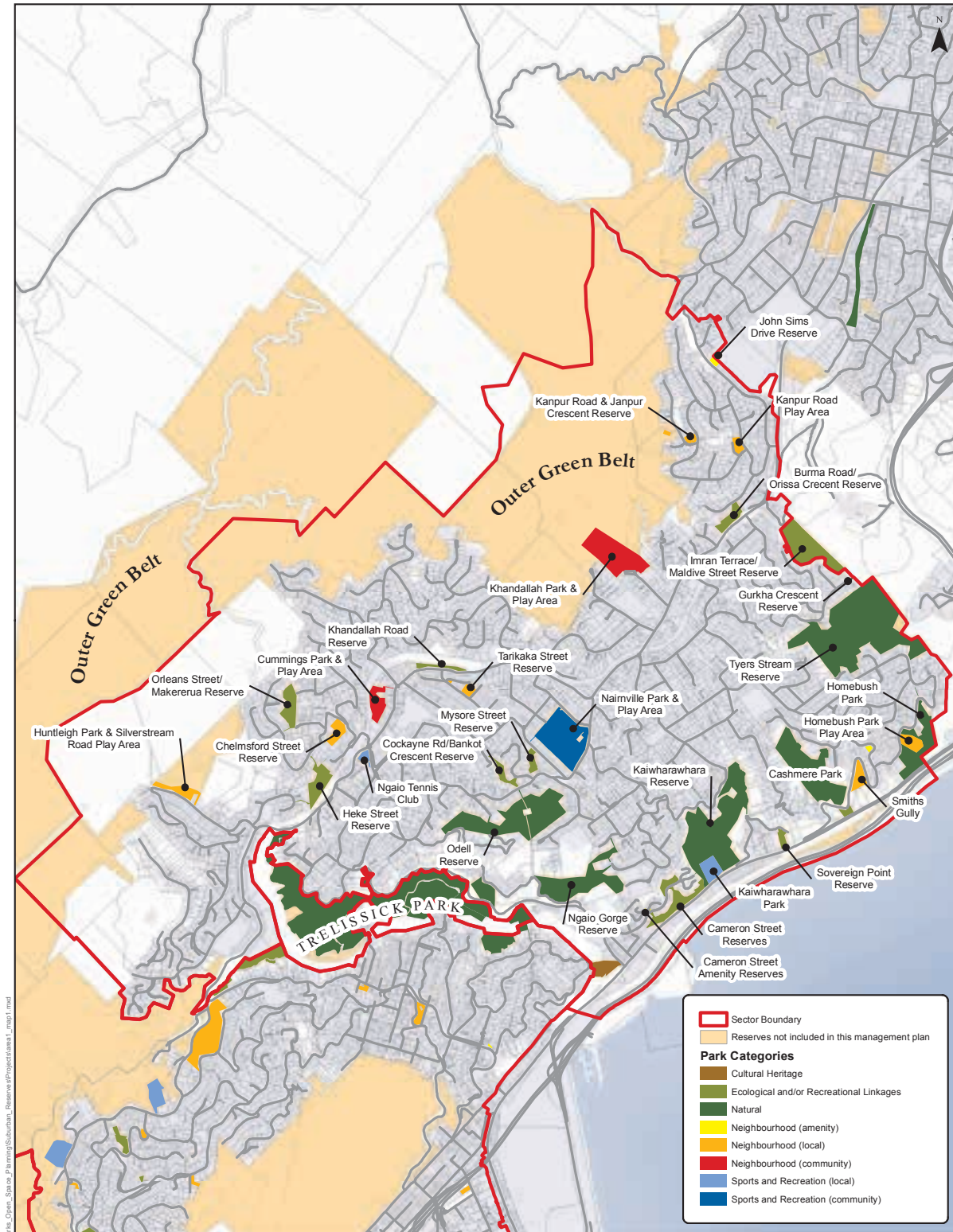
have been developed to include tracks, play areas and kick around space.

There's a good variety of open space and recreation opportunities, including Nairnville Park - a well-developed Community Sport and Recreation Park - and a number of neighbourhood parks that vary in size and character. There's a gap in local neighbourhood park and play area provision in the north eastern corner of this sector.

This sector is well served with seven dog exercise areas, including Trelissick Park and Odell Reserve.



Sector 1 - Khandallah, Broadmeadows, Ngaio, Crofton Downs and Kaiwharawhara



Key actions for this sector:

- Work with local schools and sports clubs to improve community use and access to open space and play opportunities, particularly in the north eastern part of this sector.
- Investigate the following track links:
 - Between Downing Street, Silverstream Road and through Huntleigh Park to Huntleigh Park Way (connects the street network around Huntleigh Park and Silverstream Road Play Area)
 - From Homebush Park to Tyers Stream Reserve during any future subdivision of land above Jarden Mile
 - Heke Street to Chelmsford Street Reserve
 - Between the Hutt Road and Khandallah via Cashmere Park
 - From Vasanta Avenue and Satara Crescent areas (north-west Ngaio) into the Outer Green Belt.
- Investigate the protection and/or acquisition of the following forest remnants or regenerating scrublands:
 - West of Silverstream Road as part of any future subdivision of this private land
 - North of Homebush Park as part of any future subdivision of this private land.
- Retain the dog exercise area at Cummings Park.



- **Reserve areas in this sector to be classified or reclassified:**

- Burma Road/Orissa Crescent Reserve - reclassify from Recreation to Scenic B Reserve
- Hutt Road Reserves - classify as Scenic B Reserve
- Mysore Street Reserve - classify as Scenic B Reserve
- Cashmere Park including Lohia Street Reserve - part classify Scenic B Reserve, and part reclassify Recreation to Scenic B Reserve
- Tyers Stream Reserve and Homebush Park and play area - part classify Scenic A, part classify Recreation Reserve, part reclassify from Recreation to Scenic A Reserve.
- Imran Terrace/Maldives Street Reserve - reclassify from Recreation to Scenic B Reserve
- Ngaio Gorge Road Reserves - reclassify from Recreation to Scenic B Reserve
- Nairnville Park and play area - part classify Recreation Reserve
- Cameron Street Scenic Reserve - reclassify from Recreation to Scenic B Reserve
- Part of Heke Street Reserve - classify Scenic B Reserve

This sector is well served with seven dog exercise areas, including Trelissick Park and Odell Reserve.

- Cockayne Road/Bankot Crescent Reserve - reclassify from Recreation to Scenic B Reserve
- Makererua Reserve - reclassify from Recreation to Scenic B Reserve.

For a full legal description of these reserves to be either reclassified or classified and an assessment of their values, please refer to Appendix 2 of the Draft Suburban Reserves Management Plan.



Sector 2 – Trelissick Park

This sector comprises Trelissick Park – the steep forested gorge valley located between the Johnsonville Railway line and Ngaio Gorge Road. The 20-hectare park is the largest section of public open space within the Kaiwharawhara and Korimako Stream catchments, and provides a continuous ecological corridor between the Harbour and the Outer Green Belt.

Many improvements have been made to this green corridor through Project Kaiwharawhara, which is a joint initiative between Greater Wellington Regional Council, Wellington City Council, local community groups and businesses. The project aims to protect and enhance the natural landscape, ecosystems, and recreation areas of the Kaiwharawhara Stream catchment, including Trelissick Park.

The park provides open space and recreational opportunities to Ngaio, Crofton Downs and Wadestown communities



The park provides open space and recreational opportunities to Ngaio, Crofton Downs and Wadestown communities, and features one of Wellington's largest and most popular off-leash dog exercise areas. The park is closed to bicycles.

Key actions for this sector:

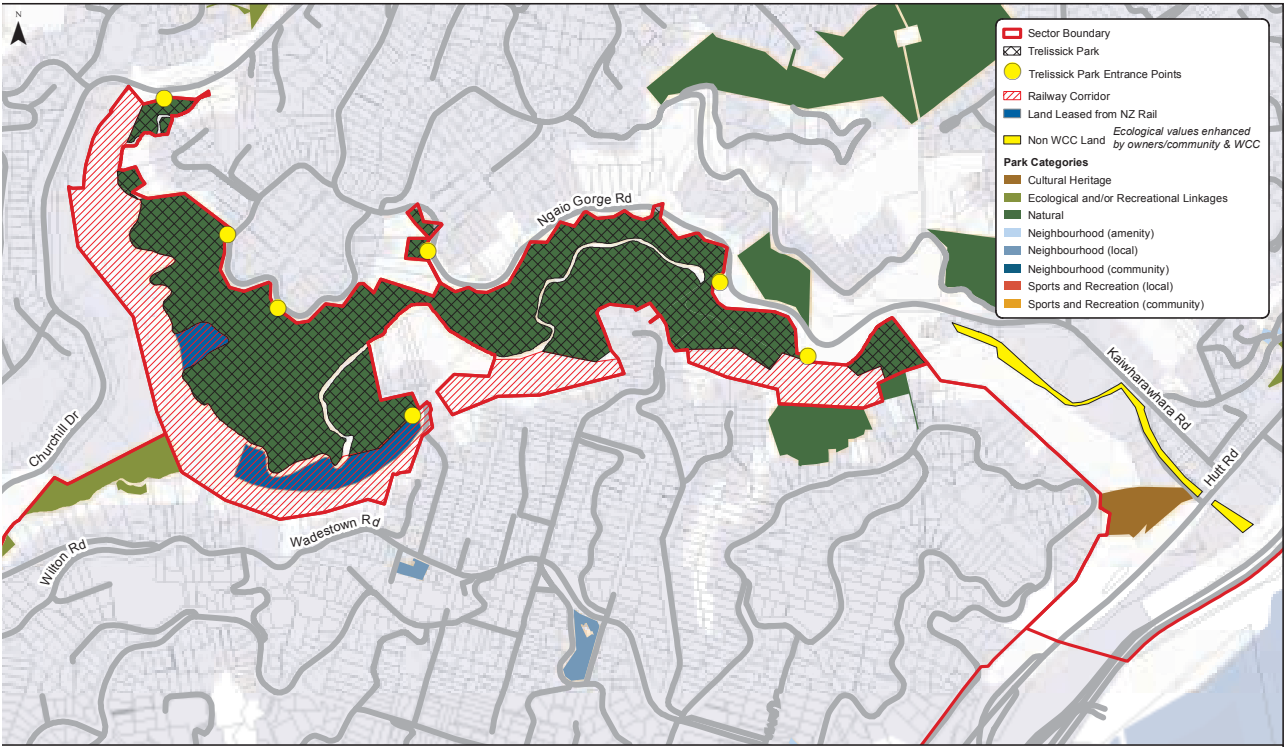
- Integrate management of the Kiwirail land (railway corridor) and adjacent privately owned bush remnants within management of the park.
- Prioritise weed control in the park, in particular old man's beard, Japanese honeysuckle and climbing asparagus. Tradescantia control will happen in targeted areas only.
- Investigate a new track link from Oban Street to Highland Park into the park to provide a second entrance from Wadestown.
- Protect the lower part of the park by the Magazine Buildings through road stopping and vesting as reserve.

Reserve areas in this sector to be classified or reclassified:

- Trelissick Park – part reclassify from Recreation Reserve to Scenic B Reserve and part classify to Scenic B Reserve.

For a full legal description of these reserves to be either reclassified or classified and an assessment of their values, please refer to Appendix 2 of the Draft Suburban Reserves Management Plan.

Sector 2 - Trellissick Park



Sector 3 - Wadestown, Wilton, Northland, Thorndon and Kelburn

These established suburbs are located on the first line of hills of the Wellington Town Belt (Kelburn Park and Te Ahumairangi) and the Wellington Botanic Garden, creating a green backdrop and outlook, and providing accessible open space to these communities.

The reserves in this sector connect the Wellington Town Belt, Otari-Wilton's Bush and the Outer Green Belt, as well as protect the Kaiwharawhara and Korimako streams' values. The Kaiwharawhara Stream corridor runs along the western edge of this sector, connecting Zealandia, Otari-Wilton's Bush, Trelissick Park and Wellington Harbour.

Ian Galloway Park offers a variety of recreation opportunities, including organised sports, a mountain bike jumps park, skate ramp and dog exercise area. There's no community park in this sector but there are good quality local parks such as Katherine Mansfield Park, Wadestown Play Area, and Izard Park. Wilton and Northland Parks provide flat open grass areas for informal recreation.

Provision of dog exercise areas within this sector includes Ian Galloway Park, Izard Park, and adjacent areas like Te Ahumairangi Hill and at Trelissick Park.



Sector 3 - Wadestown, Wilton, Northland, Thorndon and Kelburn



Have your say

Draft Suburban Reserves Management Plan

October 2014

**Absolutely Positively
Wellington City Council**
Me Heke Ki Pōneke

We need your feedback and ideas

You can comment on the Draft Plan by completing a submission form or writing down your comments and sending them to us by:

- **Visiting our website:** Wellington.govt.nz/have-your-say
- **Email:** suburbanreserves@wcc.govt.nz
- **Post:** FREEPOST
Suburban Reserves Management Plan
Parks, Sport & Recreation (REPLO1)
Wellington City Council
PO Box 2199
Wellington 6140
- **Fax:** 04 801 3155

You may also like to make an oral submission to Councillors in support of your written submission. To do this please let us know and provide your contact details.

What happens next

1. Comments on the draft plan are due Friday 5 December 2014.
2. Submissions will be analysed. Oral submissions will be held in February 2015. Amendments to the plan could be made based on submissions.
3. The final Suburban Reserves Management Plan will go to the Council for approval in April 2015.

Contact details

☐ Mr ☐ Mrs ☐ Ms ☐ Miss ☐ Dr

First name

Last name

Street address

Phone/mobile

Email

Making a submission

I am making feedback ☐ as an individual ☐ on behalf of an organisation

Name of organisation

I would like to make an oral submission to the City Councillors ☐ Yes ☐ No

If yes please provide a phone number above so that a submission time can be arranged.

Comments are due by 5pm, Friday 5 December 2014.

Privacy statement

All feedback (including name and contact details) is published and made available to elected members of the Council and the public. Personal information supplied will be used for the administration and reporting back to elected members of the Council and the public as part of the consultation process. All information collected will be held by Wellington City Council, 101 Wakefield Street, Wellington. Submitters have the right to access and correct personal information.

Questions

1. Overall, do you support or oppose the general direction and objectives of the draft plan? (please circle)

1 strongly oppose

2 oppose

3 neither support nor oppose

4 support

5 strongly support

Why do you say this?

2. Do you support or oppose the direction and policies for:

a) Sector 1. Khandallah, Broadmeadows, Ngaio, Crofton Downs and Kaiwharawhara (please circle)

1 strongly oppose

2 oppose

3 neither support nor oppose

4 support

5 strongly support

Why do you say this?

b) Sector 2. Trelissick Park (please circle)

1 strongly oppose

2 oppose

3 neither support nor oppose

4 support

5 strongly support

Why do you say this?

c) Sector 3. Wadestown, Wilton, Northland, Thorndon and Kelburn (please circle)

1 strongly oppose

2 oppose

3 neither support nor oppose

4 support

5 strongly support

Why do you say this?

d) Sector 4. Karori, Makara and Makara Beach (please circle)

1 strongly oppose

2 oppose

3 neither support nor oppose

4 support

5 strongly support

Why do you say this?

e) Sector 5. Brooklyn, Aro Valley, Highbury, Vogeltown, Mornington and Kingston (please circle)

1 strongly oppose

2 oppose

3 neither support nor oppose

4 support

5 strongly support

Why do you say this?

f) Sector 6. Berhampore, Newtown, Mt Victoria, Oriental Bay, Roseneath, Hataitai, Evans Bay and Mt Cook (please circle)

1 strongly oppose

2 oppose

3 neither support nor oppose

4 support

5 strongly support

Why do you say this?

g) Sector 7. Melrose, Kilbirnie, Rongotai, Lyall Bay, Houghton Bay, Southgate, Island Bay and Owhiro Bay (please circle)

1 strongly oppose

2 oppose

3 neither support nor oppose

4 support

5 strongly support

Why do you say this?

h) Sector 8. Maupuia, Miramar, Karaka Bays, Seatoun, Strathmore, Breaker Bay and Moa Point (please circle)

1 strongly oppose

2 oppose

3 neither support nor oppose

4 support

5 strongly support

Why do you say this?

3. Are there any other major changes you think should be included? (please circle)

Yes ☐

No ☐

Your comments

4. Are there any actions in the plan you feel should have priority? (please circle)

Yes ☐

No ☐

Your comments

5. Is there anything you feel has not been adequately covered by the plan? (please circle)

Yes ☐

No ☐

Your comments

6. Do you have any comments on the proposed reserve classifications in the draft plan?

Name of the reserve and legal description	Your comments relating to the proposed classification

7. Do you have additional comments? (Please attach additional pages if you need to)

1st fold here – fasten here once folded

Thank you for your comments.

Please return this feedback form by 5 December 2014.

2nd fold here

Free Post Authority Number 2199

**Absolutely Positively
Wellington City Council**

Me Heke Ki Pōneke

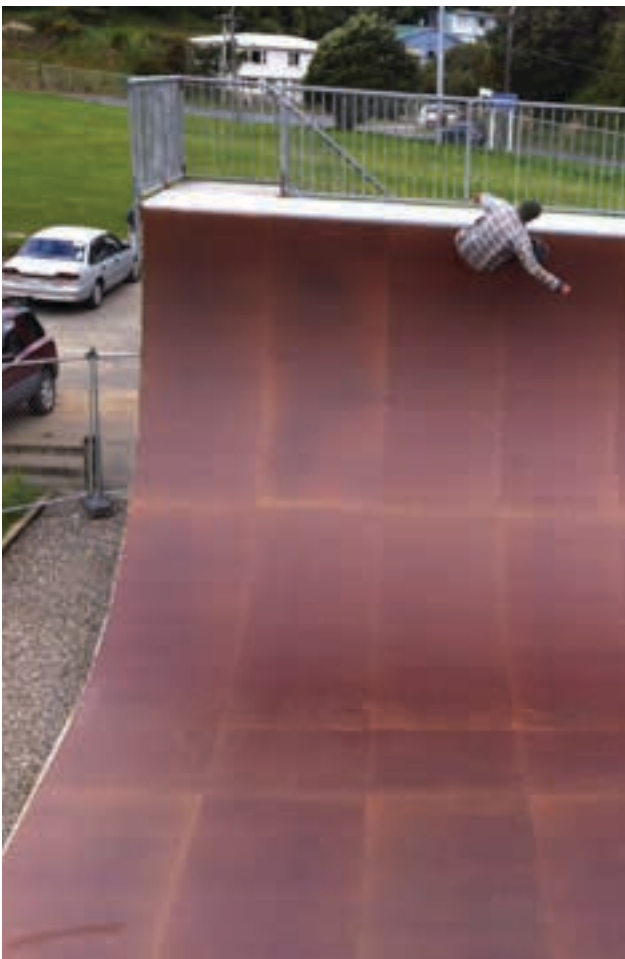


Freepost Wellington City Council
Suburban Reserves Management Plan (REPL01)
Parks, Sports & Recreation
Wellington City Council
PO Box 2199
Wellington 6140



Key actions for this sector:

- Investigate opportunities to relocate the Kelburn Park Playground to either a local school, community group or other partnership in the Kelburn Village area.
- Relocate the dog exercise area within Ian Galloway Park.
- Review opportunities to increase the use and role of Northland Park
- Work with the community and adjacent schools to restore the native vegetation in Albermarle Reserve.
- Protect and enhance:
 - The large tree framework and native vegetation at Ian Galloway Park and Appleton Park
 - The biodiversity values of the Old Karori Road corridor and the contribution it makes to connectivity between Zealandia and Otari-Wilton's Bush
 - The gully between Blackbridge Road and Churchill Drive.

**Reserve areas in this sector to be classified or reclassified:**

- Philip Myers Park - classify Local Purpose Reserve (Community)
- Wadestown Play Area - classify Recreation Reserve
- Blackbridge Road Reserve - classify Scenic B Reserve
- 60 Churchill Drive Reserve - classify Scenic B Reserve
- Glenmore Street Reserves - classify Recreation Reserve
- Albemarle Road Reserve - classify Scenic B Reserve

For a full legal description of these reserves to be either reclassified or classified and an assessment of their values, please refer to Appendix 2 of the Draft Suburban Reserves Management Plan.

Sector 4 - Karori, Makara and Makara Beach

Karori is a natural valley basin surrounded by the hills of the Outer Green Belt and Zealandia, offering a green outlook and many outdoor recreation opportunities.

The reserves in this sector provide sport and recreation activities, both at a community and local level. The western end of Karori is well serviced for open spaces with Karori Park providing a multitude of organised and informal sport and recreation opportunities, alongside the smaller local parks and accessible Outer Green Belt tracks. There's a gap in provision of local neighbourhood parks, including a play area in the eastern end of Karori, which needs to be further

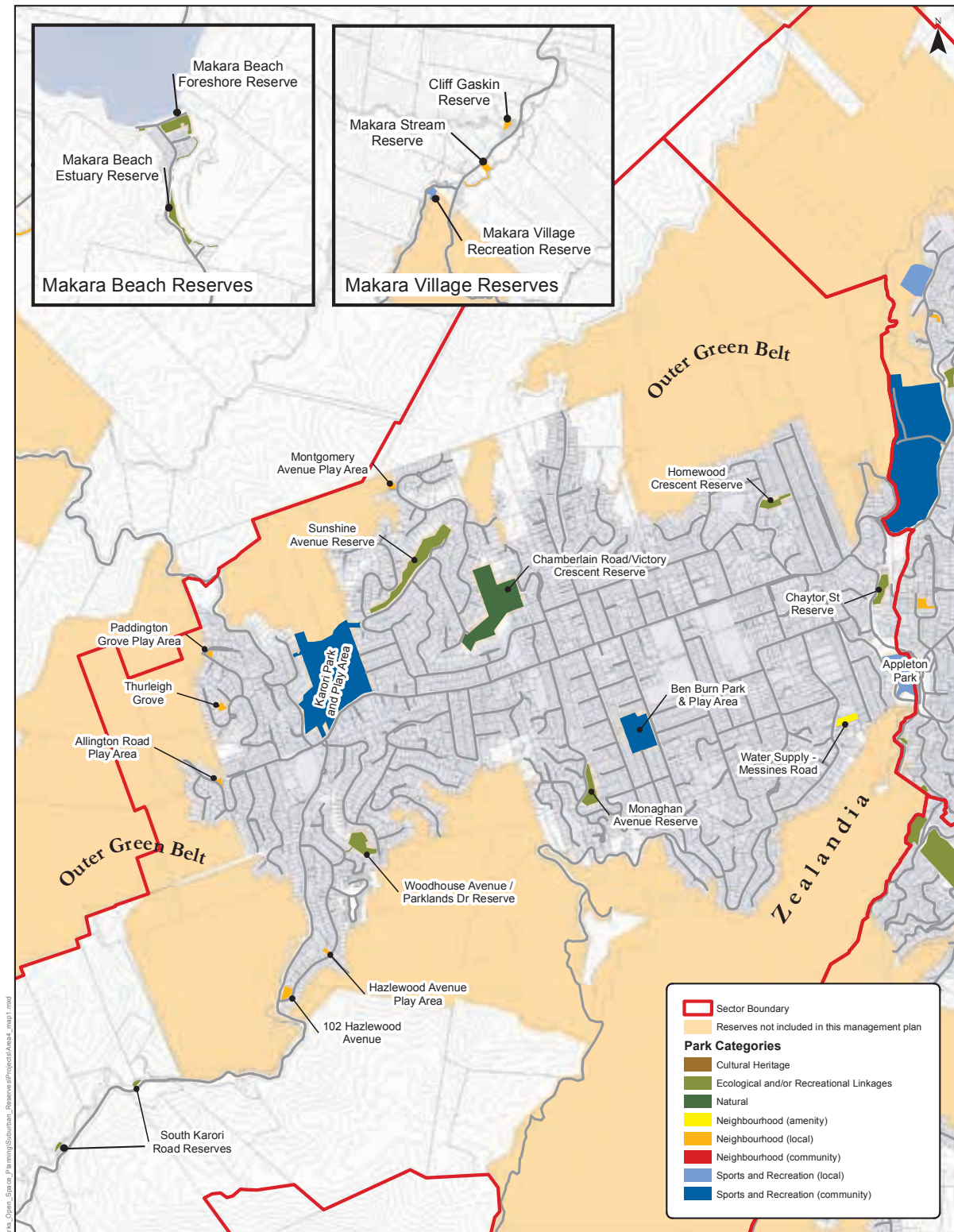
investigated. There are several small reserves that require a review of their future roles and values.

In Makara Village there are three reserves - two open grass areas with limited value for local neighbourhood recreation, and the Makara Village Recreation Reserve, which accommodates the community centre and public tennis court.

At Makara Beach there are two reserves - one is a small site on the foreshore serving no public purpose, and the other extends from the beach up the estuary with high ecological value.



Sector 4 – Karori, Makara and Makara Beach



Key actions for this sector:

- Investigate open space and play area provision, particularly in the eastern part of this sector by using either Homewood Crescent Reserve or Karori Cemetery land not required for cemetery purposes, or other public land.
- Review the future role and use of the following reserves:
 - 102 Hazelwood Avenue
 - The Makara Stream Reserve land that is not part of the stream corridor
 - Cliff Gaskin Reserve
 - Thurleigh Grove Park.
- Complete the link between the end of the formed part of South Makara Road and the South Coast.
- Protect and enhance the large tree network at Ben Burn Park and Appleton Park where it will not interfere with current use.
- Develop a learners/intermediate bike track at the back of Karori Park.



Reserve areas in this sector to be classified or reclassified:

- Chaytor Street Reserve - classify Scenic B Reserve
- Sunshine Avenue Reserve - reclassify from Recreation to Scenic B Reserve
- Tobruk Reserve - reclassify from Recreation to Scenic B Reserve
- Homewood Crescent Reserve - part classify Scenic B Reserve and part reclassify from Recreation to Scenic B Reserve
- Chamberlain Road/Victory Crescent Reserve - classify Scenic B Reserve
- Makara Beach Foreshore Reserves - part reclassify from Recreation to Scenic B Reserve, part classify as Scenic B Reserve and part reclassify from Local Purpose (Esplanade) to Scenic B Reserve.

For a full legal description of these reserves to be either reclassified or classified and an assessment of their values, please refer to Appendix 2 of the Draft Suburban Reserves Management Plan.

Sector 5 - Brooklyn, Aro Valley, Highbury, Vogeltown, Mornington and Kingston

The communities in this sector occupy the narrow valleys and hill slopes of the Owhiro and Waimapihi Stream catchments. They cluster between the dominant ridgelines of the Wellington Town Belt and Outer Green Belt, providing local residents with good open space and track linkages.

There are 15 reserves in this sector, ranging from ecological/recreation link areas and local neighbourhood parks to sport and recreation parks such as Vogelmorn Park. Although relatively small in size, Aro Street Park is a well-used neighbourhood park with a play area, community centre, flat grass area and a commuter walkway through to the CBD.

There are 15 reserves in this sector, ranging from ecological/recreation link areas and local neighbourhood parks to sport and recreation parks

There's a gap in playground provision on the ridge west of Brooklyn Village along Karepa Street and Ashton Fitchett Drive. There are three dog exercise areas spread across the sector, with a further one adjacent to Macalister Park on the Wellington Town Belt.

Key actions for this sector:

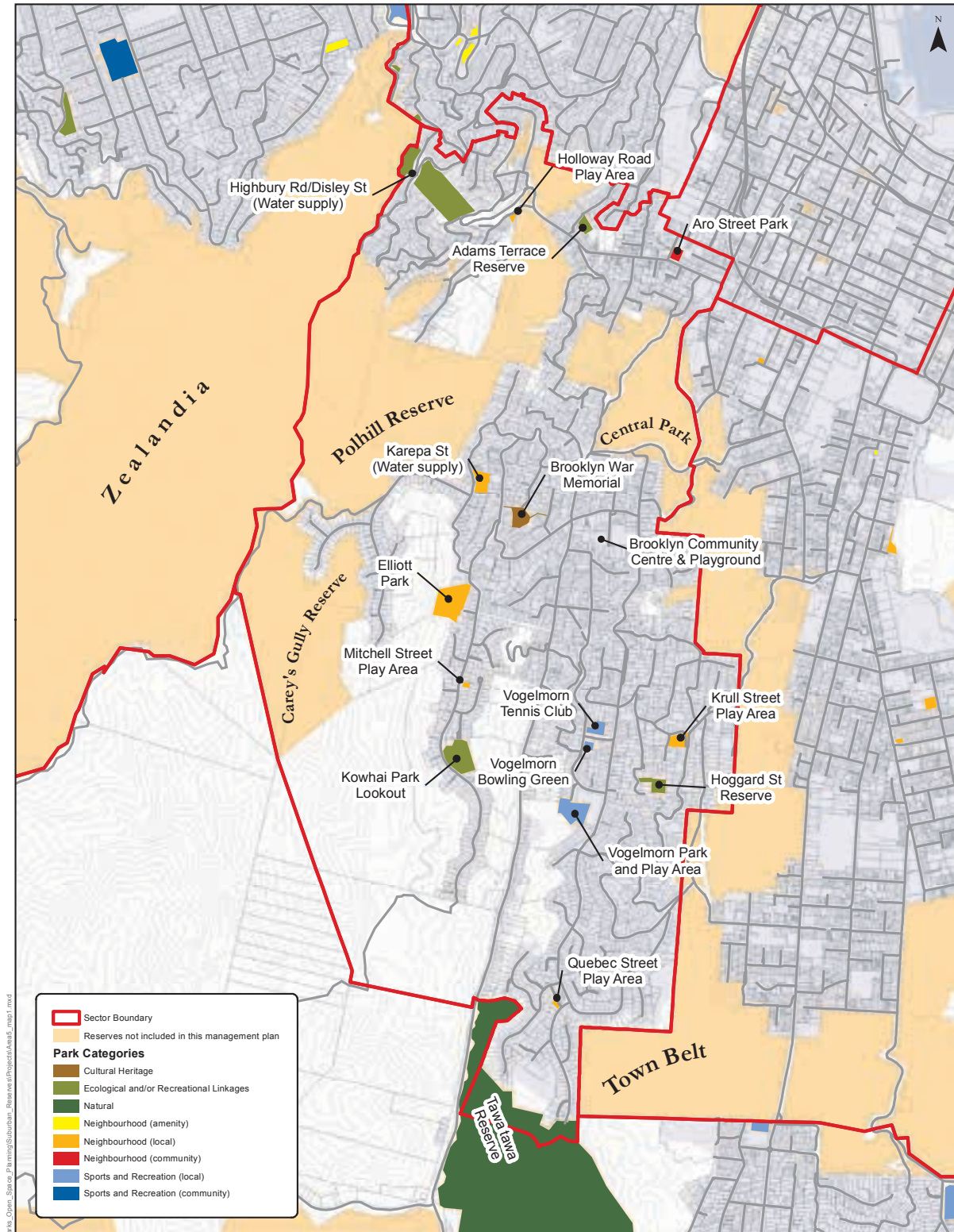
- Review recreation use and opportunities at Vogelmorn Park, including formal sports club use, circuit track, multi-use play equipment and partnership with the adjacent school.
- Review open space and play provision along the ridge from Karepa Street to the southern end of Mitchell Street as part of future greenfield development.
- Identify a future track link between Mitchell Street and Ohiro Road,
- Continue the enhancement and restoration of Owhiro Stream in conjunction with Friends of Owhiro Stream.
- Consider the role of the old Vogelmorn bowling green in the context of private ownership of the old bowling club buildings and relationship to Vogelmorn Hall.
- If the Highbury Road site between Highbury and Raroa roads is no longer required for water and drainage purposes, manage and vest as reserve.
- Plant and retain large trees at all of the suburban reserves in this sector.

Reserve areas in this sector to be classified or reclassified:

- Adams Terrace Reserve - classify Scenic B Reserve
- Holloway Road Play Area - classify Recreation Reserve

For a full legal description of these reserves to be either reclassified or classified and an assessment of their values, please refer to Appendix 2 of the Draft Suburban Reserves Management Plan.

Sector 5 - Brooklyn, Aro Valley, Highbury, Vogeltown, Mornington and Kingston





Sector 6 - Berhampore, Newtown, Mt Victoria, Oriental Bay, Roseneath, Hataitai, Evans Bay and Mt Cook

These inner suburbs are contained by or located on the first line of hills surrounding the Inner City, and are generally orientated towards the CBD and Harbour. Although not part of the suburban reserves network, the Wellington Town Belt is the major open space adjacent to these suburbs, providing a green backdrop and outlook and variety of recreation opportunities.

There are 22 reserves in this sector including 14 neighbourhood parks, such as Freyberg Pool Play Area and Kainui/Treasure Island Reserve; the Patent Slip; and seven ecological linkages including coastal esplanade reserves. There are no sport and recreation parks in this sector but provision is provided within the Wellington Town Belt. There's a good provision of playgrounds in this sector with small gaps on the eastern side of Grafton Road in Roseneath and in the southern part of Berhampore.

There is one dog exercise area in this sector opposite Cog Park with additional off-leash areas on the Wellington Town Belt.

There is a relatively high number of heritage trees in this sector, particularly within the road reserves and private property.



Key actions for this sector:

- Review the role of Alexandra Road play area for play and outdoor recreation and assess alternative sites and options for this area.
- Protect and enhance the street tree network, in particular in the areas surrounded by Wellington Town Belt (Mt Victoria, Mt Cook, Newtown and Berhampore).
- Support community gardening at Hospital Road Park and community initiatives for outdoor activities at Mercy Park and Carrara Park to encourage greater and more diverse use.
- Provide a community playground at Wakefield Park to service Island Bay and Berhampore that complements existing park use and decommission Jeypore Street playground.
- Review the long term protection and/or acquisition of the walkway adjacent to St Gerard's Monastery.

Reserve areas in this sector to be classified or reclassified:

- Mercy Park - classify Recreation Reserve
- Elizabeth Street Play Area - classify Recreation Reserve
- Rewa Road Reserve - classify Recreation Reserve
- Treasure Island/Kainui Reserve - classify Recreation Reserve
- Cog Park - classify Recreation Reserve
- Patent Slip - classify Historic Reserve

For a full legal description of these reserves to be classified and an assessment of their values, please refer to Appendix 2 of the Draft Suburban Reserves Management Plan.

Sector 6 - Berhampore, Newtown, Mt Victoria, Oriental Bay, Roseneath, Hataitai, Evans Bay and Mt Cook



We will support community initiatives for outdoor activities at Mercy Park and Carrara Park to encourage greater and more diverse use.



Sector 7 - Melrose, Kilbirnie, Rongotai, Lyall Bay, Houghton Bay, Southgate, Island Bay and Owhiro Bay

These coastal communities lie in south-facing valleys along the coastal ridge tops and across the Rongotai Isthmus. They are generally orientated towards the south coast and beaches, providing a natural outlook, access to open space and a variety of recreation opportunities.

Many of the coastal parks and beaches within this sector, such as Shorland Park, Oku Street Reserve and Lyall Bay Beach, are managed separately under the South Coast Management Plan.

There are 16 reserves in this sector, including four natural reserves that connect the Wellington Town Belt with the South Coast (eg Tawatawa Reserve and Sinclair Park). Five local sport and recreation parks and three neighbourhood parks are all of good quality. The underdeveloped Rongotai (Plantation) Reserve is a long continuous strip of Council land that extends from Kilbirnie to Lyall Bay.

Kilbirnie Park is a well-used community sport and recreation hub accommodating sports fields, play area, clubrooms, bowling club, the Wellington Regional Aquatic Centre, Kilbirnie Recreation Centre and the Ruth Gotlieb Library. Kilbirnie Park has a number of issues that will have an impact on its future use and development which will need to be resolved as part of a detailed recreation planning project.

There is a gap in playground provision in the middle of Lyall Bay and Rongotai and no neighbourhood park in the central part of Island Bay.

There are four dog exercise areas within this sector, with adjacent areas managed under the South Coast and Wellington Town Belt Management Plans.

Key actions for this sector:

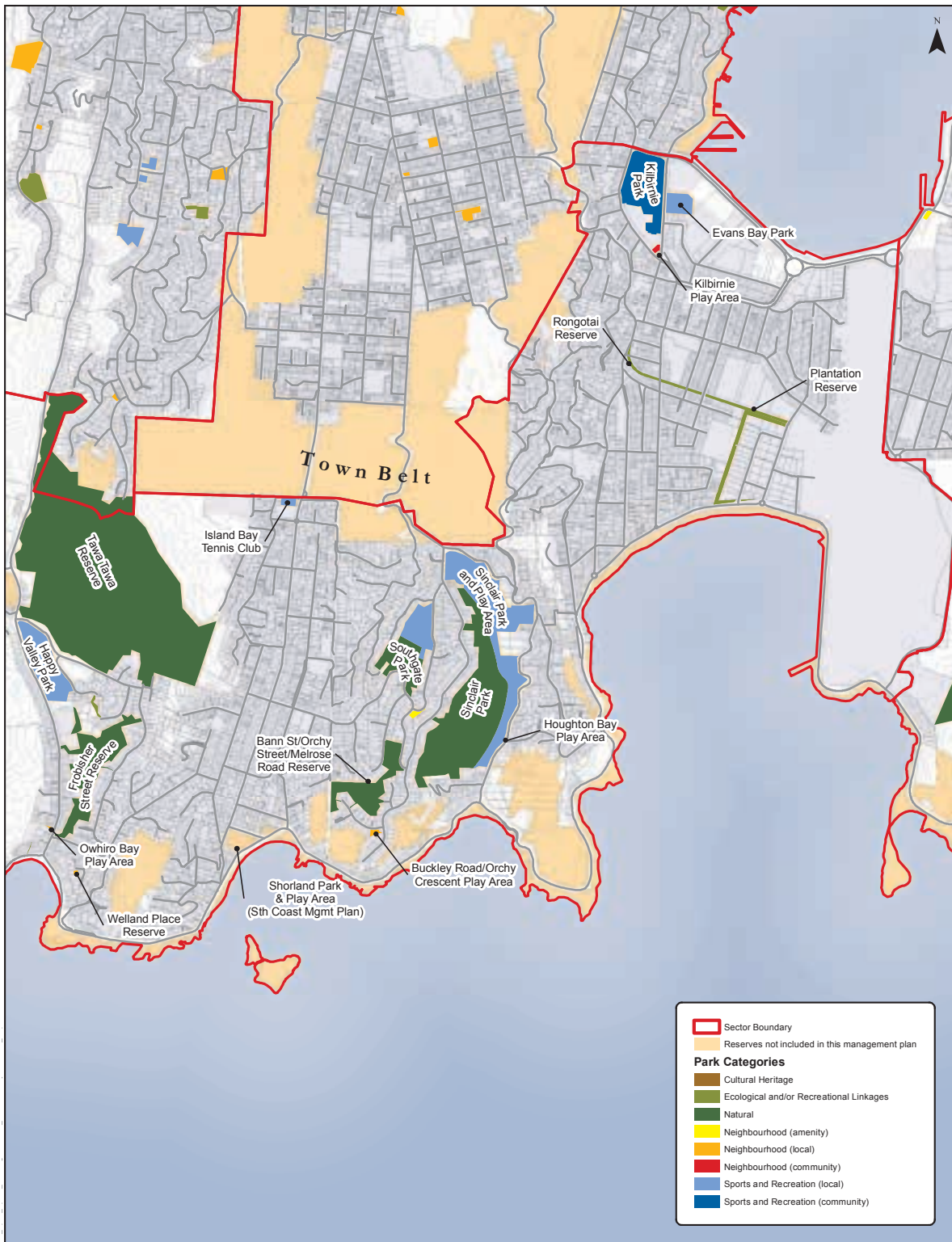
- Develop a long-term master plan and associated recreation plan for Kilbirnie Park.
- Review the future role and use of Welland Place Reserve.
- Provide a community playground at Wakefield Park to service Island Bay and Berhampore and decommission Jeypore Street playground.
- Continue to contribute to development plans for the Plantation Reserves with provision of formal play in mind.
- Consult on a name for the Plantation Reserves corridor under the Open Space Naming Policy guidelines.
- Develop a fenced dog off leash area at Sinclair Park.
- Support the community led Putawai Project to lift the stream in Sinclair Park.

Reserve areas in this sector to be classified or reclassified:

- Sinclair Park (including Houghton Play Area) - classify Recreation Reserve
- Owhiro Bay Play Area - classify Recreation Reserve
- Frobisher Street Reserve - classify Scenic B Reserve.

For a full legal description of these reserves to be either reclassified or classified and an assessment of their values, please refer to Appendix 2 of the Draft Suburban Reserves Management Plan.

Sector 7 - Melrose, Kilbirnie, Rongotai, Lyall Bay, Houghton Bay, Southgate, Island Bay and Owhiro Bay





There are 16 reserves in this sector, including four natural reserves that connect the Wellington Town Belt with the South Coast



Sector 8 – Maupuia, Miramar, Karaka Bays, Seatoun, Strathmore Park, Breaker Bay and Moa Point

The Miramar Peninsula is a significant geographical feature and forms an important green backdrop and outlook to the City. It has a strong network of open spaces, with more natural reserves on the slopes, coastal edge and headlands and formalised recreation open space developed on the flat areas.

The main Council-owned natural reserves covered under this management plan are Centennial Park, Carter Park and Tukanāe Street Reserve.

The large area of open space at the northern end of the Peninsula, including Massey Memorial and the ex-Defence land (known as Watts Peninsula), is owned by the Crown. Council supports any opportunities to develop this land into a heritage park.

The large coastal reserves at the southern end, including Rangitatau and Atatürk, are managed under the South Coast Management Plan.

There's a good variety of open spaces and recreation opportunities throughout this sector. Scorching Bay Beach is a popular destination for recreation and leisure activities. Miramar Park a well-used sport and recreation park. There is an over-provision of playgrounds in the sector, with 12 playgrounds distributed between neighbourhood and sport and recreation parks.

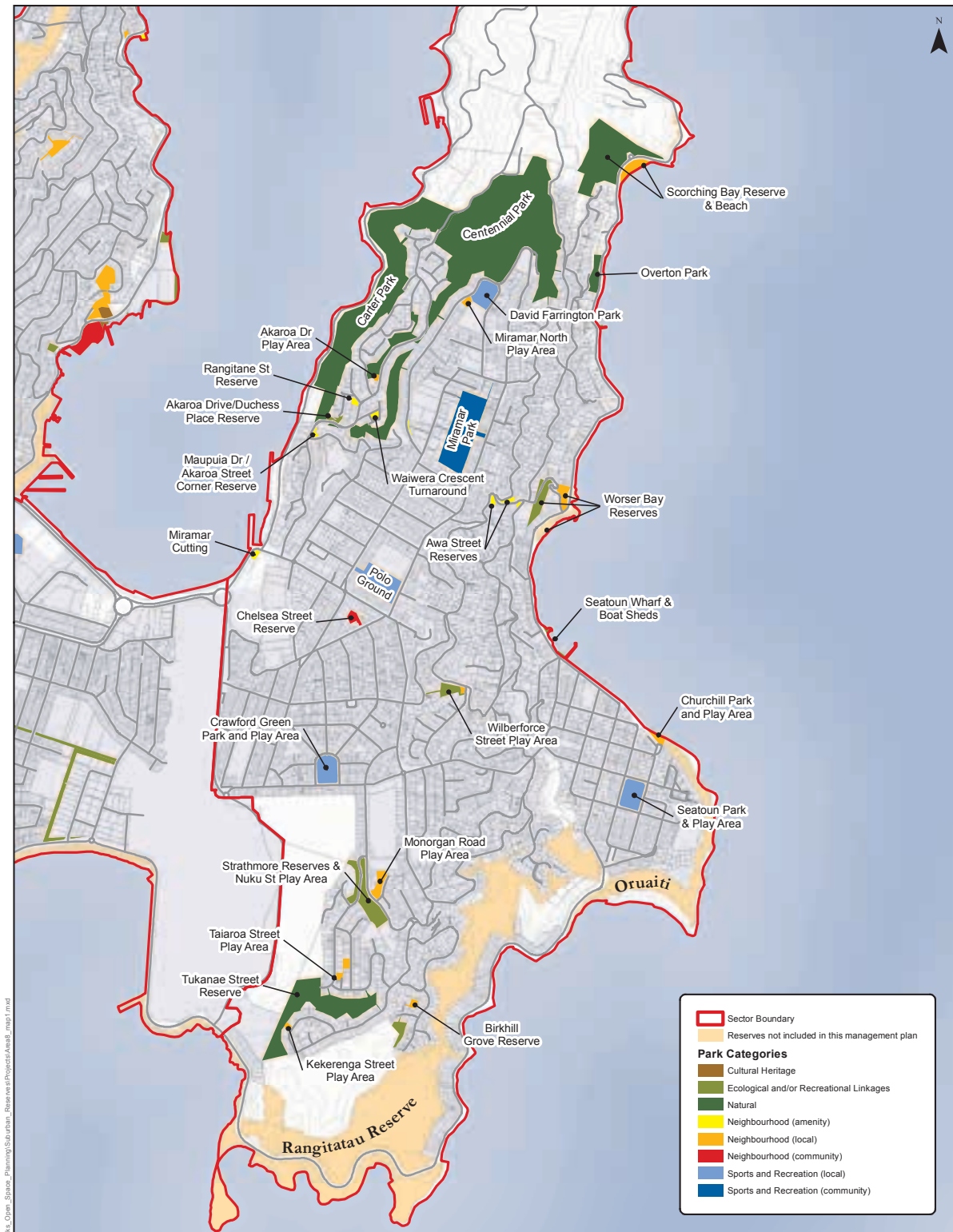
Many of the local play areas and neighbourhood parks connect to large nature reserves.

There's adequate provision of dog exercise areas in this sector, including Carter Park and Tukanāe Street Reserve.



The large area of open space at the northern end of the Peninsula, including Massey Memorial and the ex-Defence land (known as Watts Peninsula), is owned by the Crown. Council supports any opportunities to develop this land into a heritage park.

Sector 8 - Maupuia, Miramar, Karaka Bays, Seatoun, Strathmore Park, Breaker Bay and Moa Point



Key actions for this sector:

- Prepare a master plan for Miramar Park, including the development of a community playground.
- Gradually decommission play equipment at Nuku Street play area, given the redevelopment of the nearby Taiaroa Street play area.
- Gradually decommission play equipment at Seatoun Park, following the renewal of Churchill Street community playground in 2015/16.
- Review the future role and use of the grass area adjacent to Raukawa Street. If no suitable use can be found consider disposal of this area.
- Complete the Grade 2 beginners/ intermediate track in Centennial Reserve with no further tracks proposed.
- Support the development of a heritage park on Watts Peninsula in conjunction with the Crown, and the development of an integrated track network at the northern end of the Peninsula.
- Look for opportunities to include large trees and pockets of native vegetation in all of the parks.
- Work with Airways Corporation to protect the open space land at Palmer Head.

Reserve areas in this sector to be classified or reclassified:

- Centennial Park - reclassify from Recreation to Scenic B Reserve
- Carter Park - classify Scenic B Reserve
- Worser Bay Beach - classify Recreation Reserve
- Awa Road Reserves - classify Recreation Reserve

For a full legal description of these reserves to be either reclassified or classified and an assessment of their values, please refer to Appendix 2 of the Draft Suburban Reserves Management Plan.



Scorching Bay Beach is a popular destination for recreation and leisure activities.

More information and giving your feedback

For more detailed information, see the full Draft Suburban Reserves Management Plan at **Wellington.govt.nz/surburbanreserves**

You can comment on the Draft Plan by completing a submission form or writing down your comments and sending them to us by 5 December.

Website: Wellington.govt.nz/have-your-say

Email: suburbanreserves@wcc.govt.nz

**Absolutely Positively
Wellington City Council**

Me Heke Ki Pōneke